

**NOW  
AVAILABLE**

**FOR LEASE**



**3800 Holcomb Bridge Rd**  
Peachtree Corners, Georgia 30092

**Spaces:**

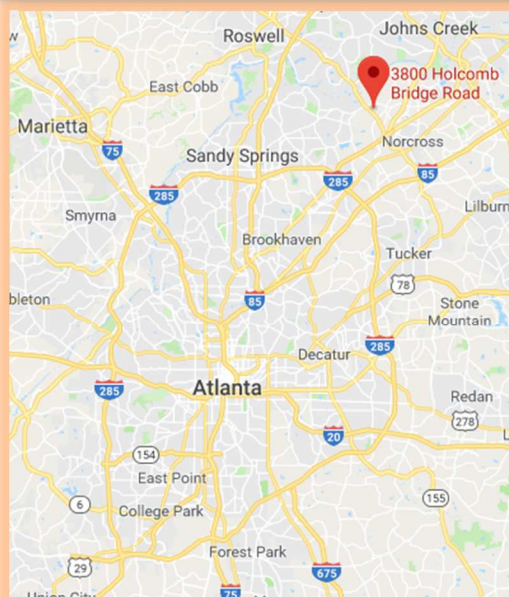
**+/- 1,930 sf – w/ Road Frontage**

**+/- 600 sf, 2<sup>nd</sup> floor**

**+/- 600 sf, 2<sup>nd</sup> floor**

Easy access and close to Johns Creek/Alpharetta, Duluth, etc.

Lots of area restaurants and amenities.



**Contact:**

**Michael Wendt, CCIM**

**770-873-1770 (cell)**

**Michael@WendtCRS.com**

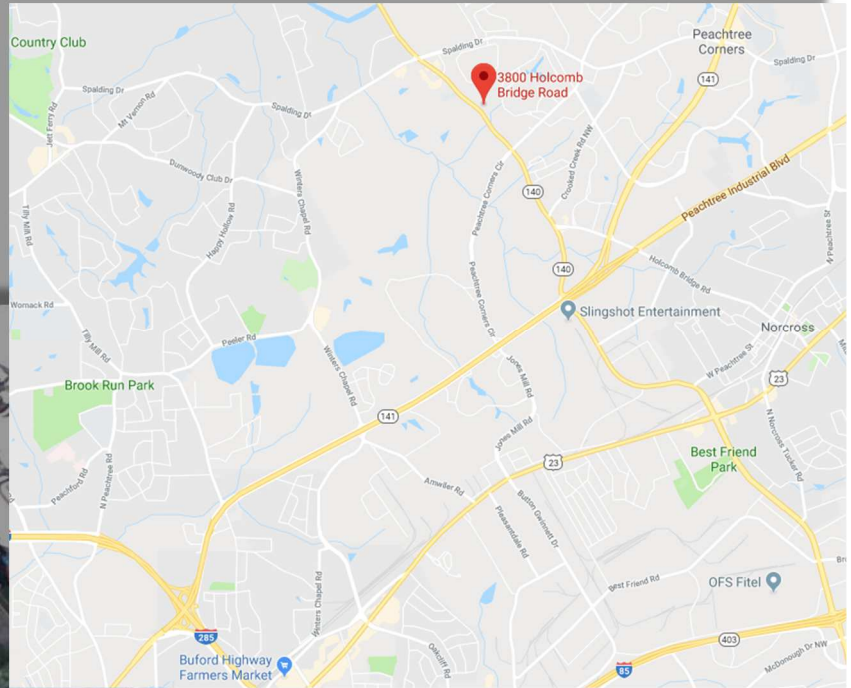
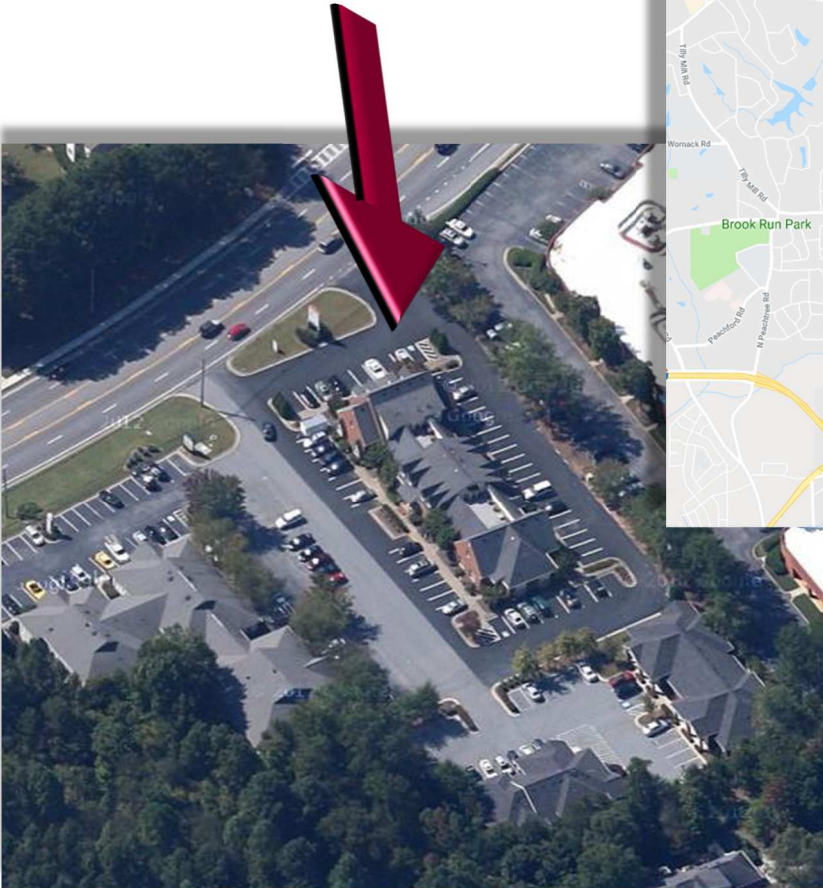
**Wendt CRS, Inc.**  
Commercial Realty Services



No warranty or representation, express or implied, is made as to the accuracy of the information contained herein, and the same is submitted subject to errors, omissions, change of price, rental or other conditions, withdrawn without notice, and to any special listing conditions, imposed by our principals.

# 3800 Holcomb Bridge Rd.

Peachtree Corners, GA 30092



**Contact:**  
**Michael Wendt, CCIM**  
**770-873-1770 (cell)**  
**[Michael@WendtCRS.com](mailto:Michael@WendtCRS.com)**



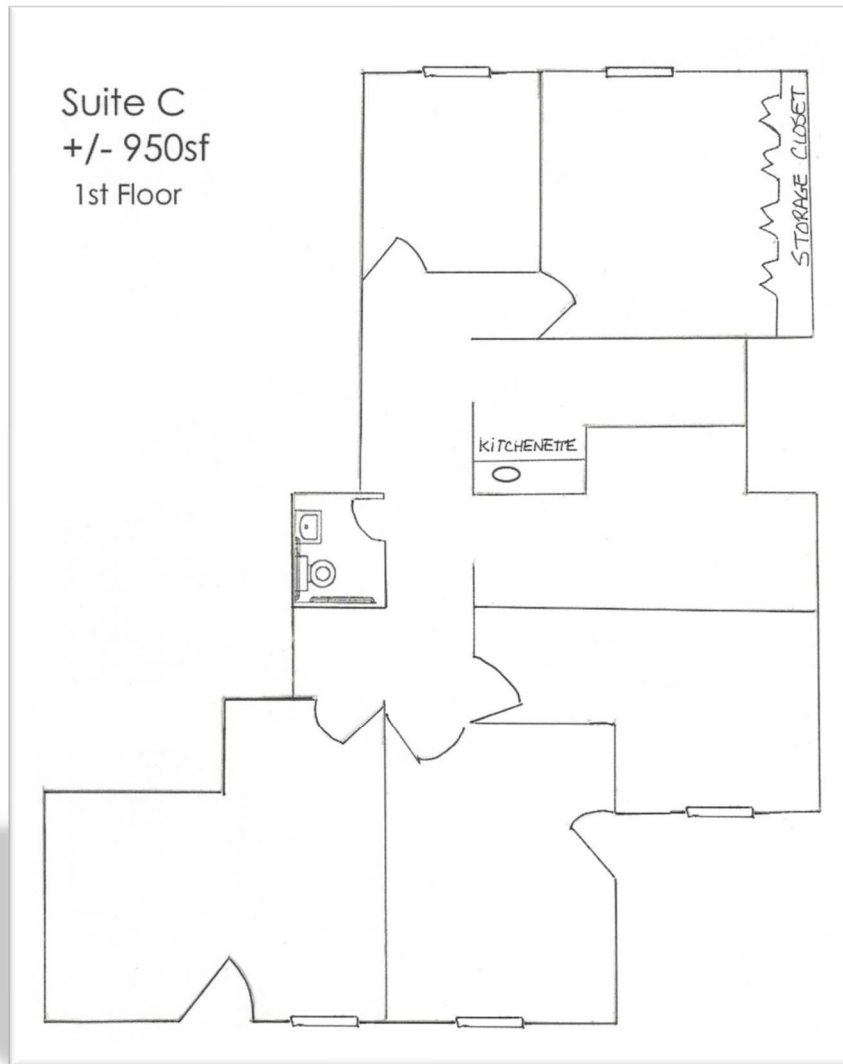
No warranty or representation, express or implied, is made as to the accuracy of the information contained herein, and the same is submitted subject to errors, omissions, change of price, rental or other conditions, withdrawn without notice, and to any special listing conditions, imposed by our principals.



# 3800 Holcomb Bridge Rd.

Peachtree Corners, GA 30092

## Suite C +/- 950sf



This highly visible space is at the front of the building. Offering:

- Frontage directly on Holcomb Bridge Rd. (approx. 40,000 vehicles/day)
- Private porch
- Monument Signage Available

# 3800 Holcomb Bridge Rd.

Peachtree Corners, GA 30092

**Suite 204 (2<sup>nd</sup> Floor)**

**+/- 600sf**



No warranty or representation, express or implied, is made as to the accuracy of the information contained herein, and the same is submitted subject to errors, omissions, change of price, rental or other conditions, withdrawn without notice, and to any special listing conditions, imposed by our principals.