



BUILT MEDICAL OFFICE SPACE FOR LEASE

680 Kinderkamack Road, Oradell, New Jersey



PRESENTED BY:

JON STRAVITZ, ESQ. & SIOR
JSTRAVITZ@BIOCCRE.COM
201.232.2767

JOHN AIRES, MSRE & SIOR
JAIRES@BIOCCRE.COM
201.978.6040

AVAILABLE SPACE OVERVIEW



PROPERTY DESCRIPTION

- 5 Hospitals within 8 Miles of the property
- Major Tenants: Oradell ASC and Fertility Institute of NJ
- Full Building LED lighting upgrade
- HVAC- complete renovation 2016. Upgraded to dual 100ton chillers and VFD's. Two new high efficient condensing boilers with state of the art controls were installed

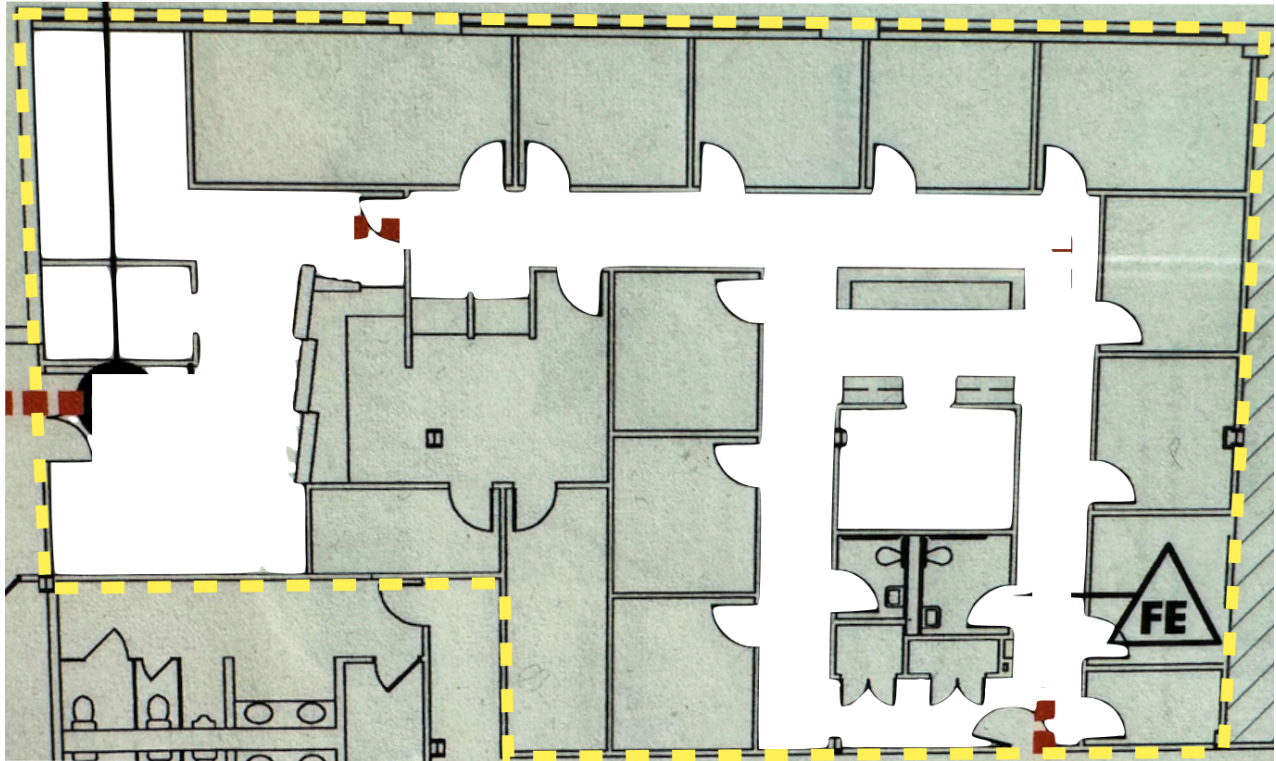
680 KINDERKAMACK ROAD:

Building Class:	Class A
Building Size:	76,730 RSF
Available SF:	Suite 302 - 3,270 RSF Suite 301 - 4,450 RSF
Year	
Renovated:	2006
Zoning:	B-2

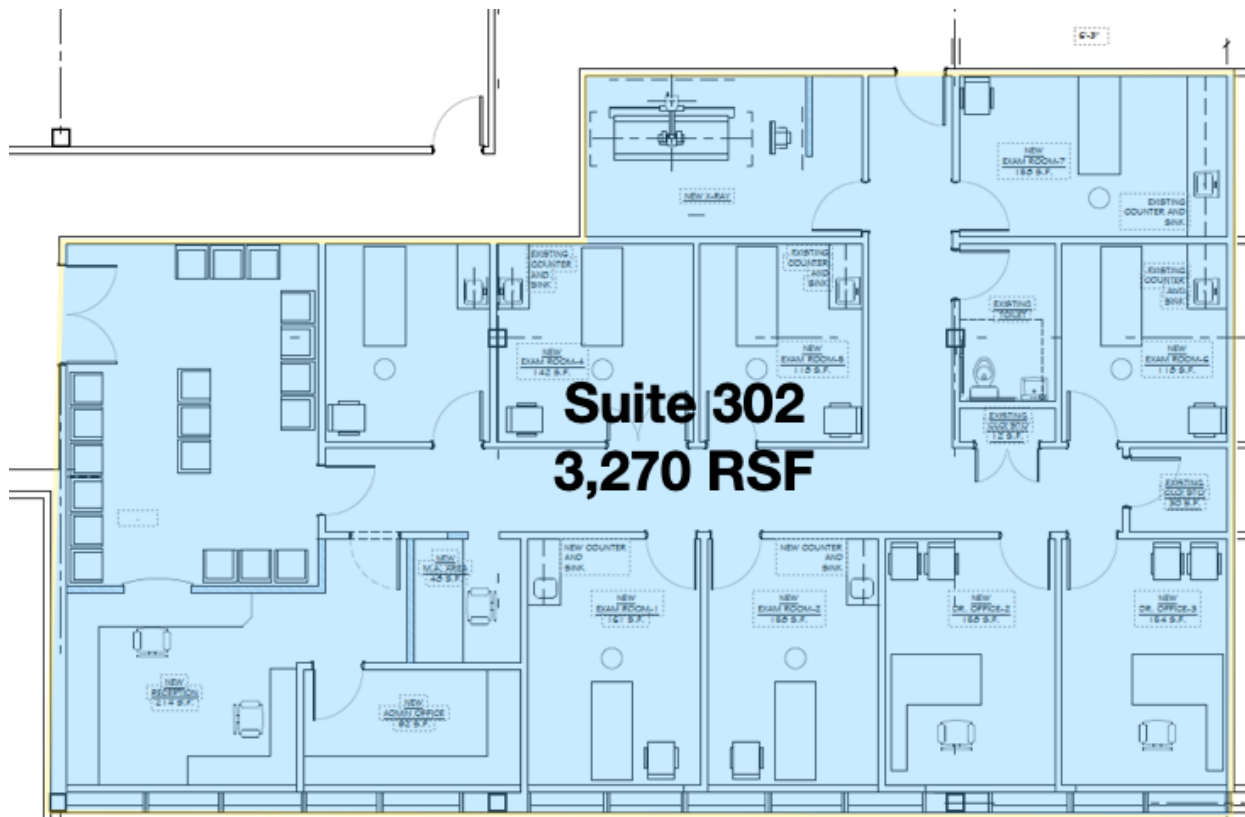
ASKING \$35 PER SF PLUS TE

Please contact John Aires for additional information and questions at jstravitz@bioccre.com or 201.978.6040

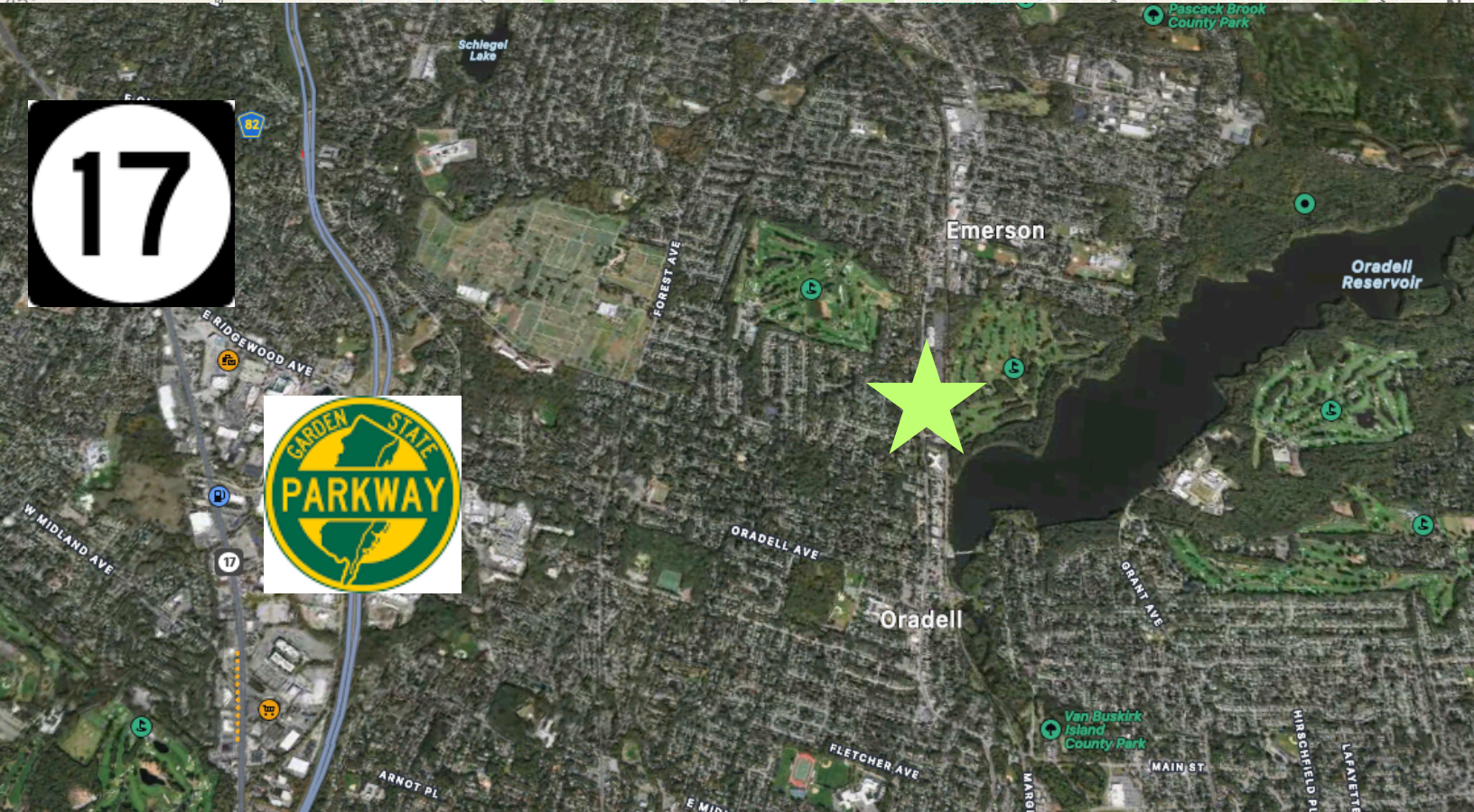
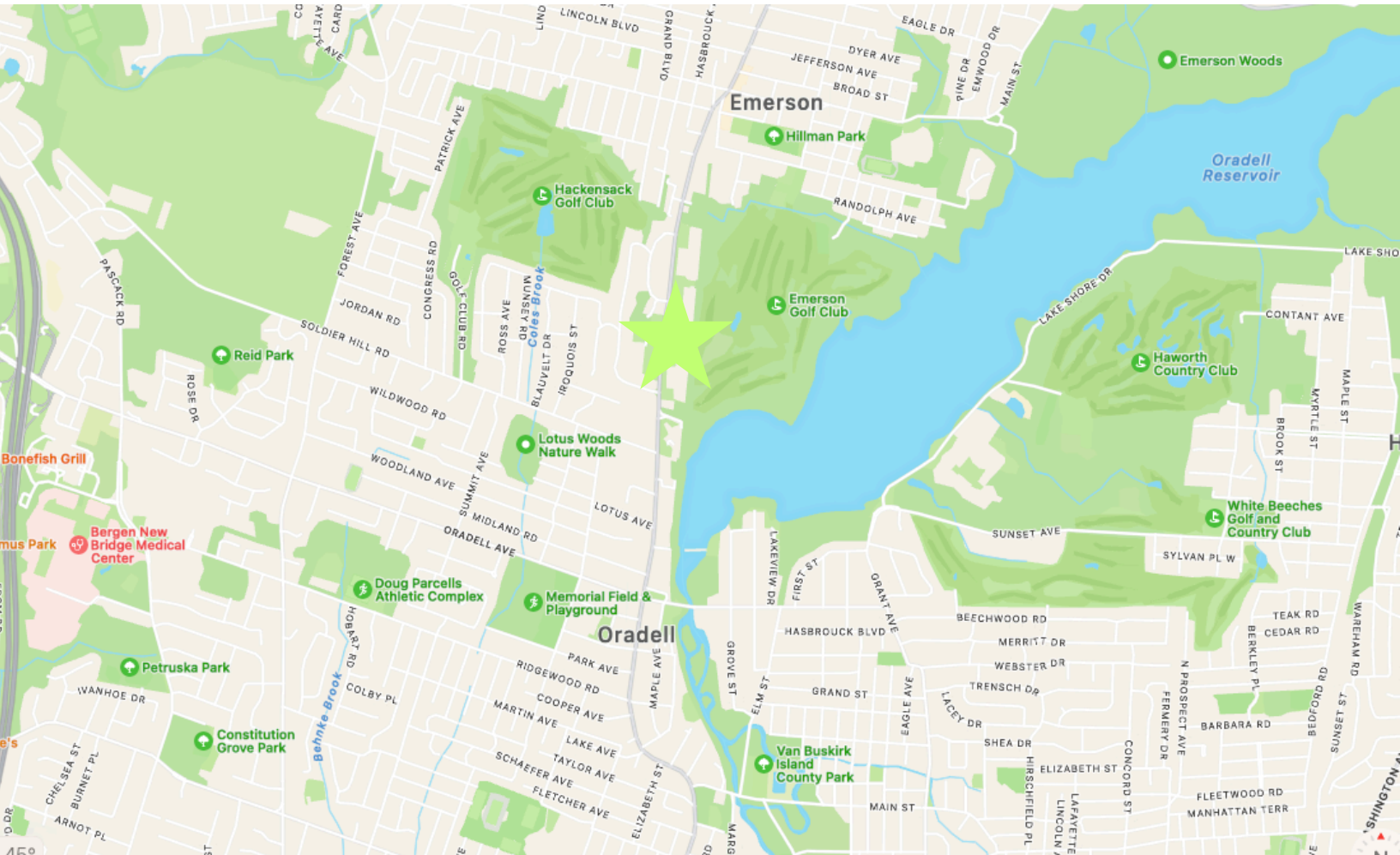
SUITE 301



SUITE 302



LOCATION MAP





B I O C
Commercial Real Estate

For Additional Information Please Contact:

JOHN AIRES, MSRE & SIOR

JAIRES@BIOCCRE.COM

201.978.6040

JON STRAVITZ, ESQ. & SIOR

JSTRAVITZ@BIOCCRE.COM

201.232.2767



BIOC Commercial Real Estate, LLC

"In the Best Interest of Our Clients"