

FOR SUBLEASE

WATERMARK TOWER

530 8 AVENUE SW
CALGARY, AB



www.cbre.ca

CBRE

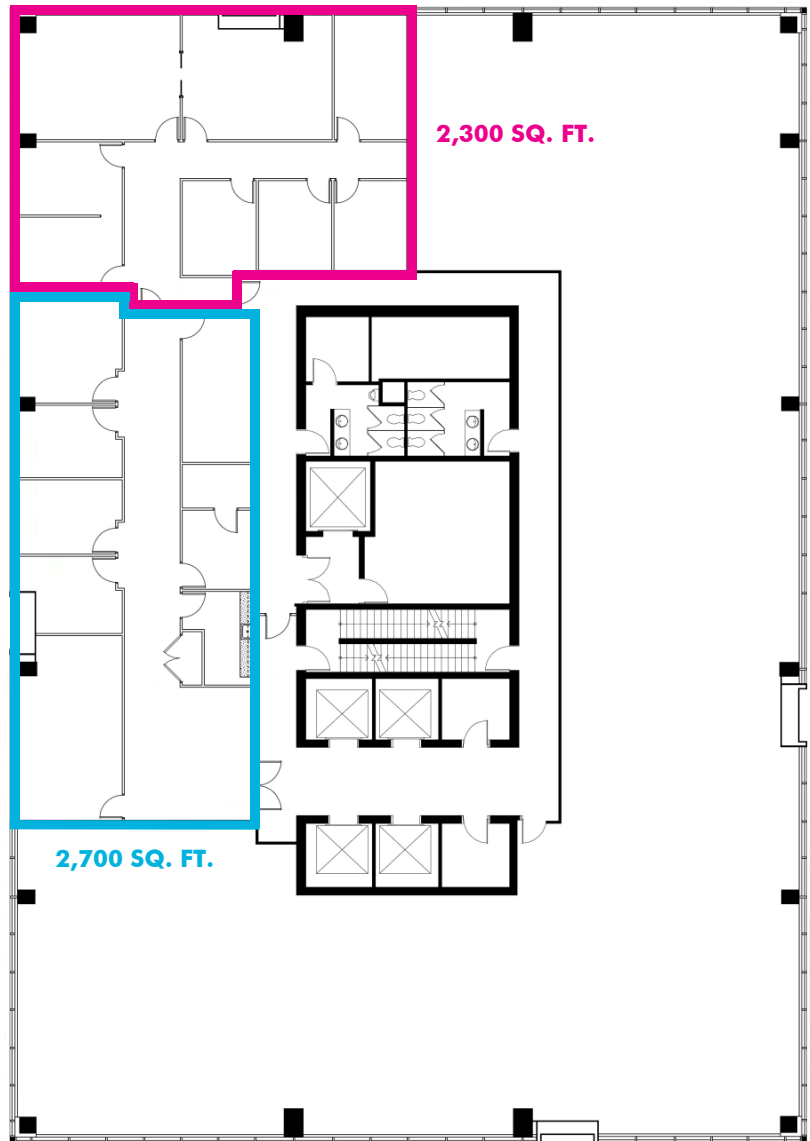
FOR SUBLEASE WATERMARK TOWER

530
8 AVENUE SW
Calgary, AB



SUBLEASE PARTICULARS

- + **AVAILABLE PREMISES:**
14th Floor
2,300 to 5,000 square feet
- + **SUBLANDLORD:**
Mancal Corporation
- + **AVAILABILITY:**
Immediate
- + **SUBLEASE TERM:**
Expires February 27, 2019
- + **NET RENTAL RATE:**
Market Sublease Rates
- + **ALLOWANCE:**
As – is
- + **2018 OP. COSTS & TAXES:**
\$21.36 per square feet
- + **COMMENTS:**
 - Office intensive layout
 - Quality improvements



CONTACT US

TREVOR DAVIES

Vice President
403 750 0542
trevor.davies@cbre.com

BRYAN WALSH

Senior Vice President
403 750 0524
bryan.walsh@cbre.com

© 2018 CBRE, Inc. This information has been obtained from sources believed reliable. We have not verified it and make no guarantee, warranty or representation about it. Any projections, opinions, assumptions or estimates used are for example only and do not represent the current or future performance of the property. You and your advisors should conduct a careful, independent investigation of the property to determine to your satisfaction the suitability of the property for your needs.

Photos herein are the property of their respective owners and use of these images without the express written consent of the owner is prohibited.

CBRE