

CREATING EXCEPTIONAL



CHARLES O. FISHER MEDICAL BUILDING

193 Stoner Avenue | Westminster, MD 21157



PROPERTY OVERVIEW

The Charles O. Fisher Medical Building is a premier three-story medical office building offering 77,263 SF of exceptional space near Carroll Hospital. This facility is perfect for growing healthcare practices in central Westminster.

Conveniently situated on Stoner Avenue, this medical office building provides easy access to US Route 140, Route 97, and Route 27. It is also in close proximity to Carroll Hospital, Westminster Shopping Center, and TownMall of Westminster.

KEY FEATURES

- **Adjacent** to Carroll Hospital Center
- **Competitive** lease packages
- **100** surface parking spaces
- **Customizable** office spaces
- **Unfinished** ceiling height of 10"

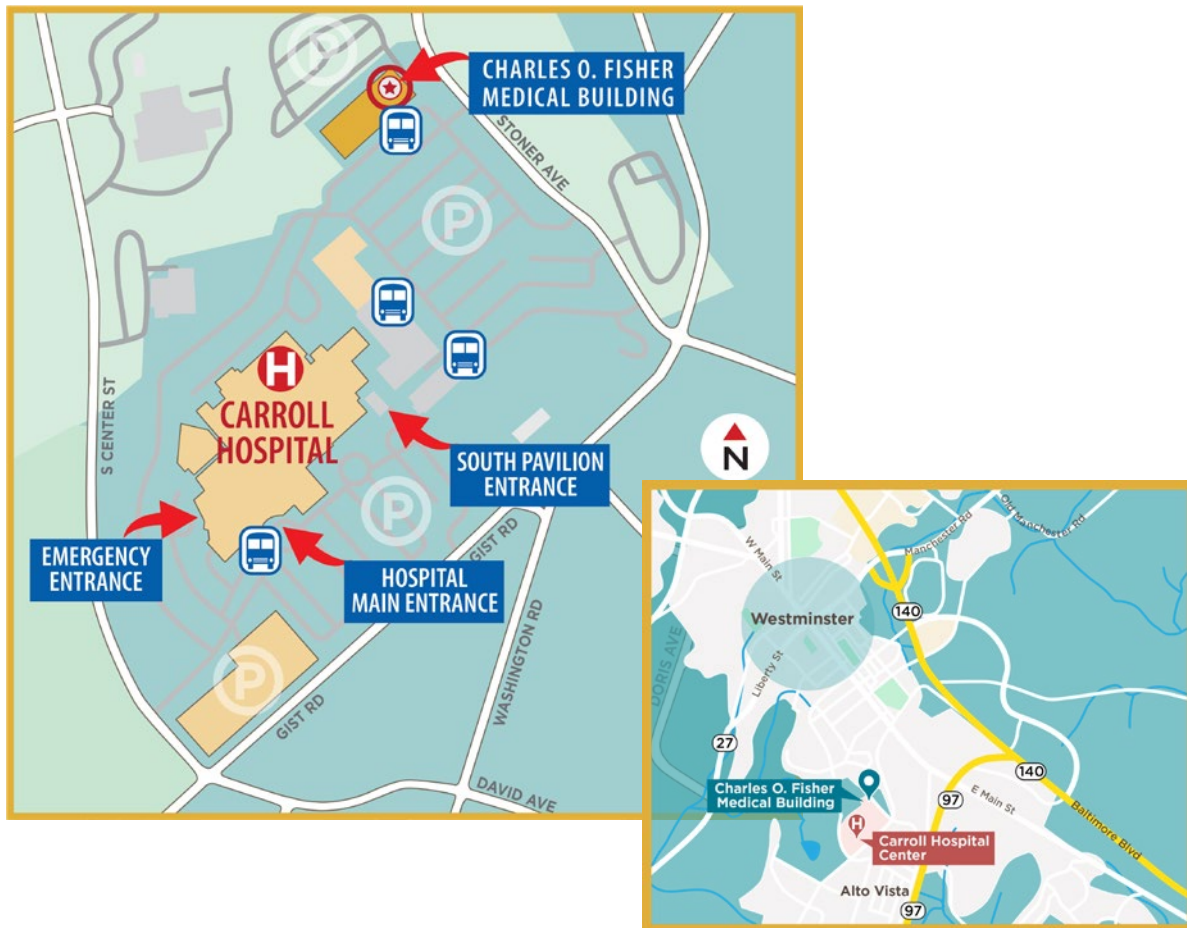
Contact Lillibridge to Learn More

Tyler Miller, Regional Leasing Director

tyler.miller@Lillibridge.com • 804.836.4473

LOCATION MAPS

Campus Map



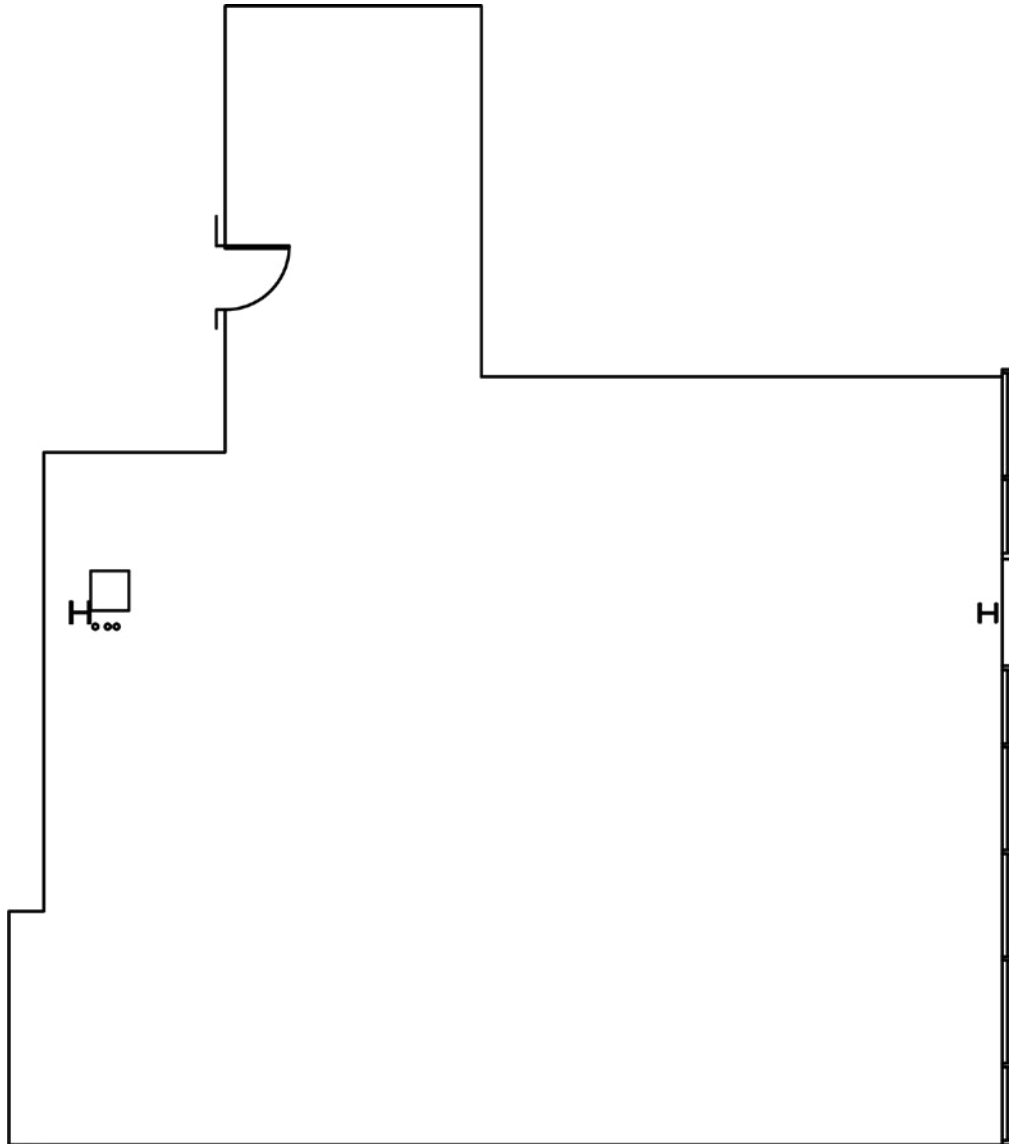
Aerial Map



SUITE PLAN

Charles O. Fisher Medical Building
193 Stoner Avenue
Westminster, MD 21157

SUITE 210
2,035 RSF



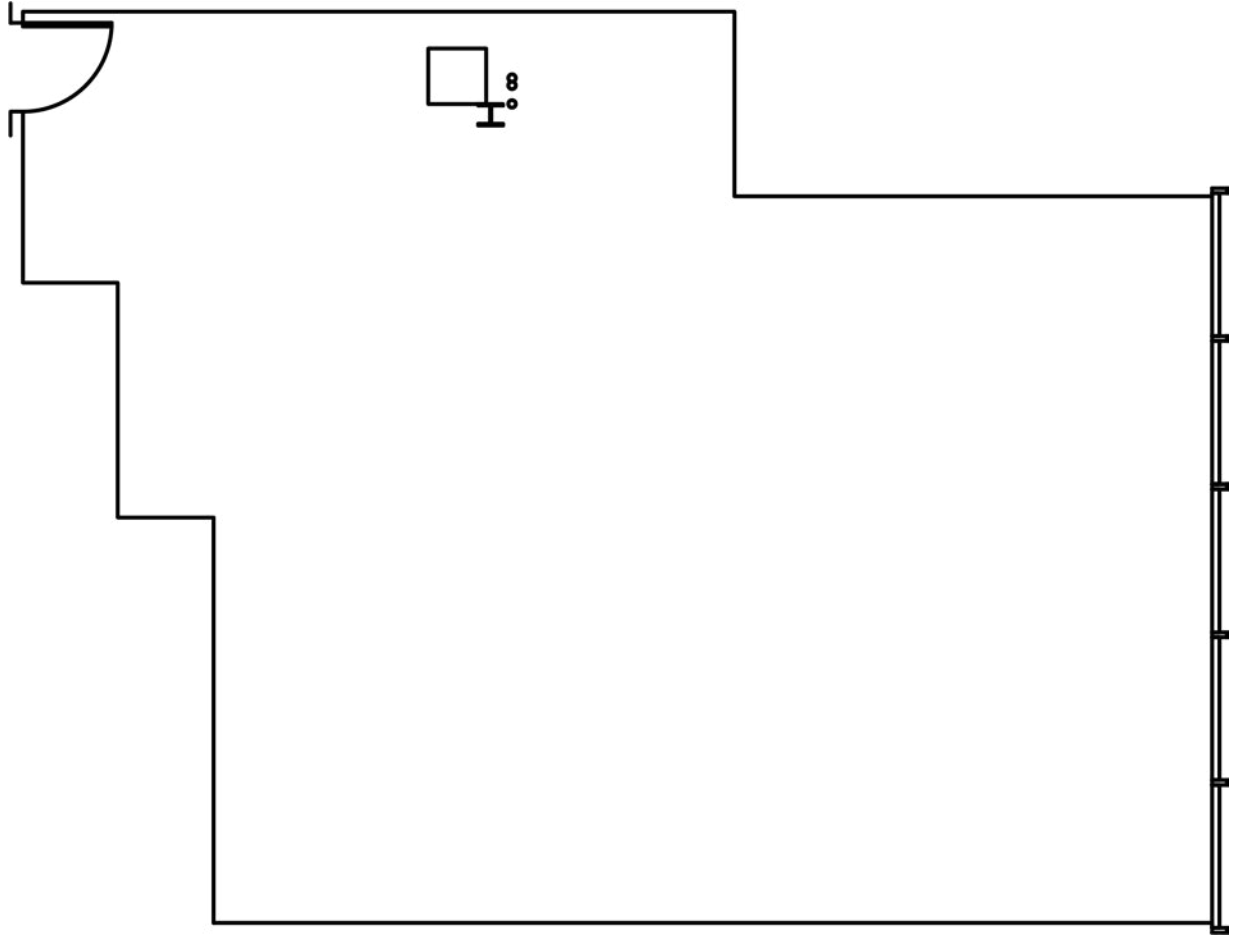
For Leasing Information

Contact Regional Leasing Director
Tyler Miller at (804) 836-4473
tyler.miller@lillibridge.com

SUITE PLAN

Charles O. Fisher Medical Building
193 Stoner Avenue
Westminster, MD 21157

SUITE 330
1,248 RSF



For Leasing Information

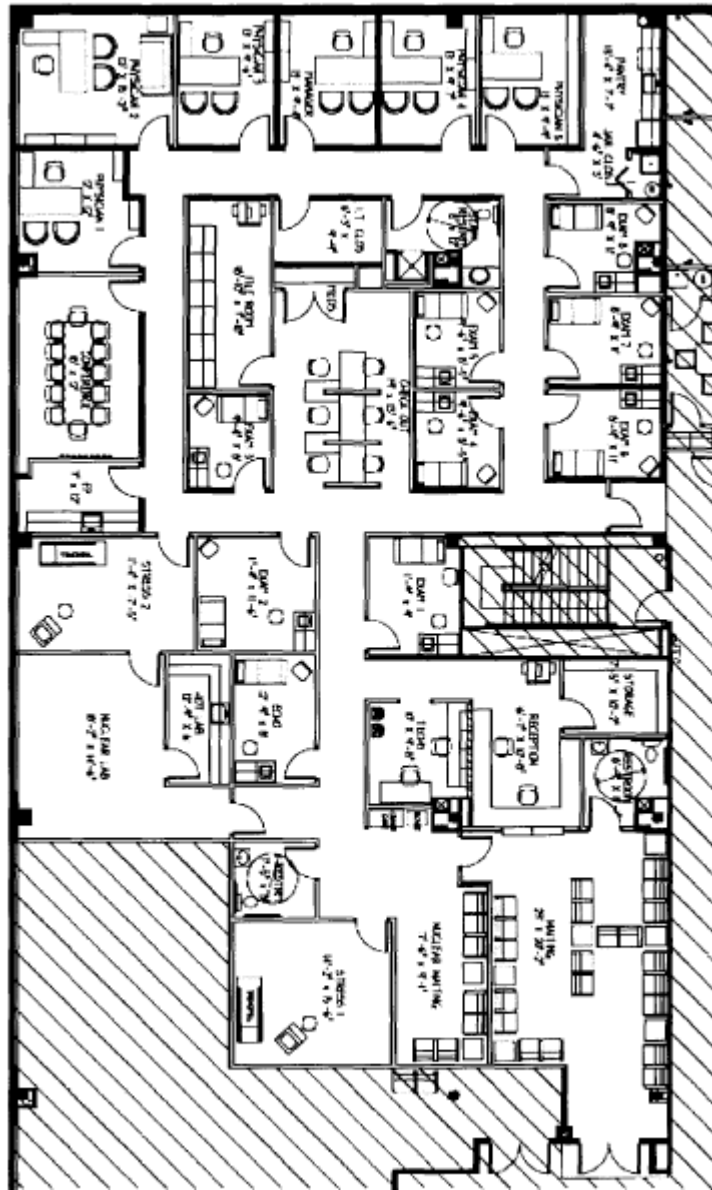
Contact Regional Leasing Director
Tyler Miller at (804) 836-4473
tyler.miller@lillibridge.com

SUITE PLAN

Charles O. Fisher Medical Building
193 Stoner Avenue
Westminster, MD 21157

SUITE 350
6,398 RSF

Available 1/1/2025



For Leasing Information

Contact Regional Leasing Director
Tyler Miller at (804) 836-4473
tyler.miller@lillibridge.com