



11,875 SF FOR SUBLEASE

488

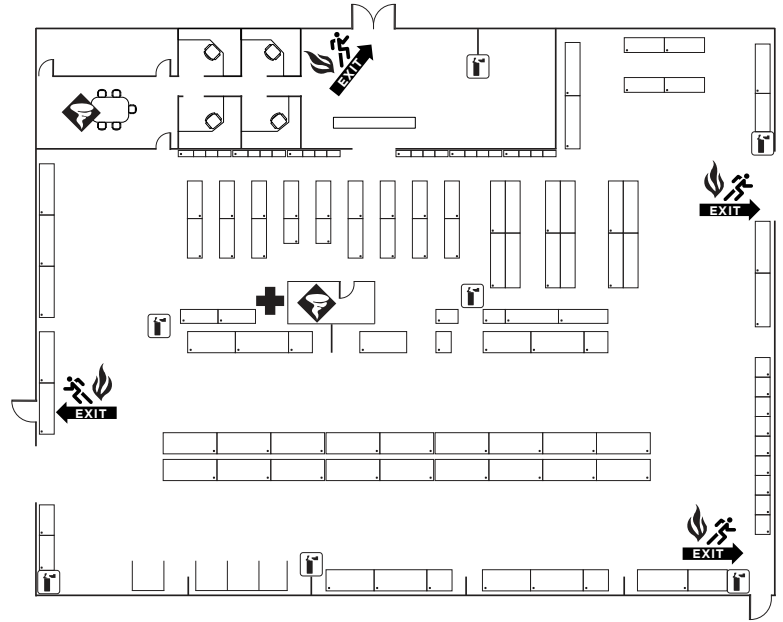
**MIDDLE
TENNESSEE BLVD.**

Murfreesboro, TN



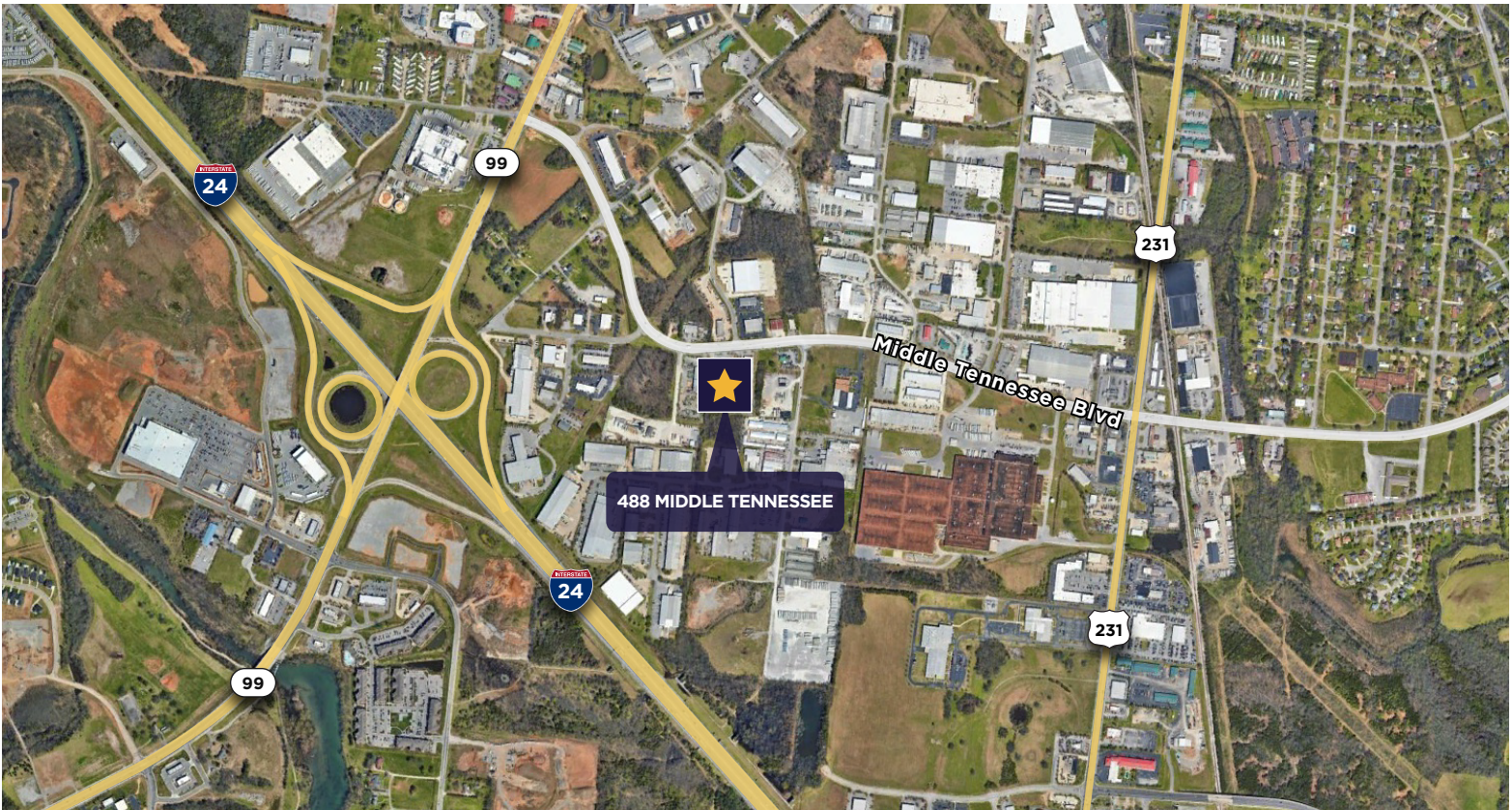
PROPERTY INFO

- 11,875 SF
- Minimal Office
- 3 Drive-In Doors
- Competitive Rate
- Easy Access to I-24
- Lease Expires 8/31/2026



FLOOR PLAN

MAP



Contact Info:

Shawn Stankavage

+1 615 301 2927

shawn.stankavage@cushwake.com

