

915 Douglas Blvd

Roseville, CA 95678

For Lease

Executive Offices

Property Summary



Property Description

Experience unparalleled luxury at 915 Douglas Blvd, Roseville, CA, where high-end executive suites are nestled in a truly unique building. Conveniently located with easy access to Interstate 80, this property offers seamless connectivity to Sacramento and beyond. Enjoy the dynamic blend of urban amenities and suburban charm in Roseville, with excellent dining, premier shopping at Westfield Galleria, and abundant recreational opportunities nearby. The suites premium finishes, providing an elegant and sophisticated environment for discerning professionals. This property is designed to enhance productivity, making it an ideal choice for businesses aiming to make a lasting impression.

Spaces	Lease Rate	Space Size
Office 1	Call for Pricing	165 SF
Office 2	Call for Pricing	100 SF
Office 3	Call for Pricing	117 SF
Office 4	Call for Pricing	111 SF
Office 5	Call for Pricing	110 SF
Office 7	Call for Pricing	133 SF
Office 8	Call for Pricing	171 SF
Office 9	Call for Pricing	184 SF

JIM ESWAY

P: 916.788.9731

jesway@crossroadventures.net

CROSSROAD
VENTURES GROUP
your real estate compass.

915 Douglas Blvd

Roseville, CA 95678

For Lease

Executive Offices

First Floor Availability

FIRST FLOOR



JIM ESWAY

P: 916.788.9731

jesway@crossroadventures.net

CROSSROAD

VENTURES GROUP

your real estate compass.

915 Douglas Blvd

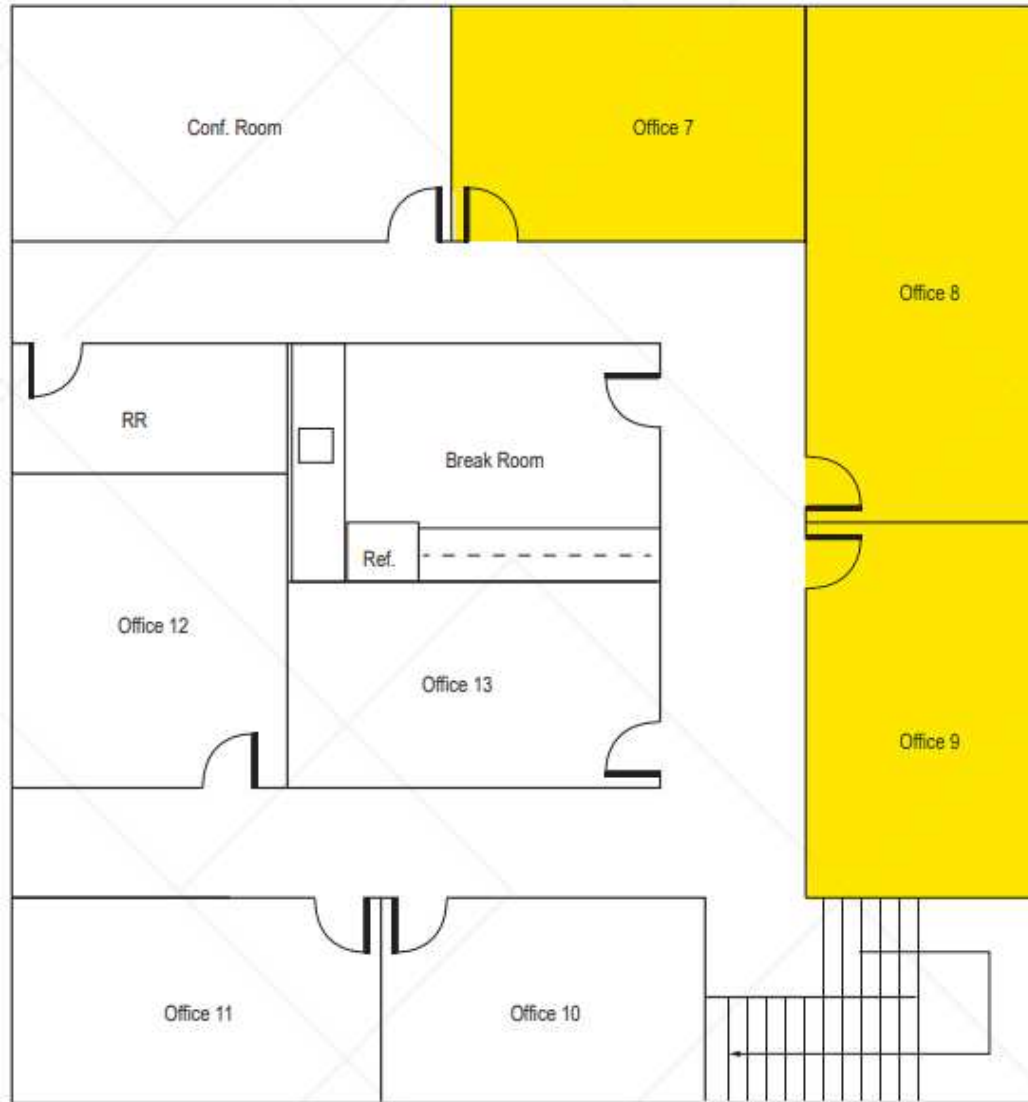
Roseville, CA 95678

For Lease

Executive Offices

Second Floor Availability

SECOND FLOOR



JIM ESWAY

P: 916.788.9731

jesway@crossroadventures.net

CROSSROAD

VENTURES GROUP

your real estate compass.

915 Douglas Blvd

Roseville, CA 95678

For Lease

Executive Offices

Additional Photos



JIM ESWAY

P: 916.788.9731

jesway@crossroadventures.net

CROSSROAD

VENTURES GROUP

your real estate compass.

915 Douglas Blvd

Roseville, CA 95678

For Lease

Executive Offices

Additional Photos



JIM ESWAY

P: 916.788.9731

jesway@crossroadventures.net

CROSSROAD

VENTURES GROUP

your real estate compass.

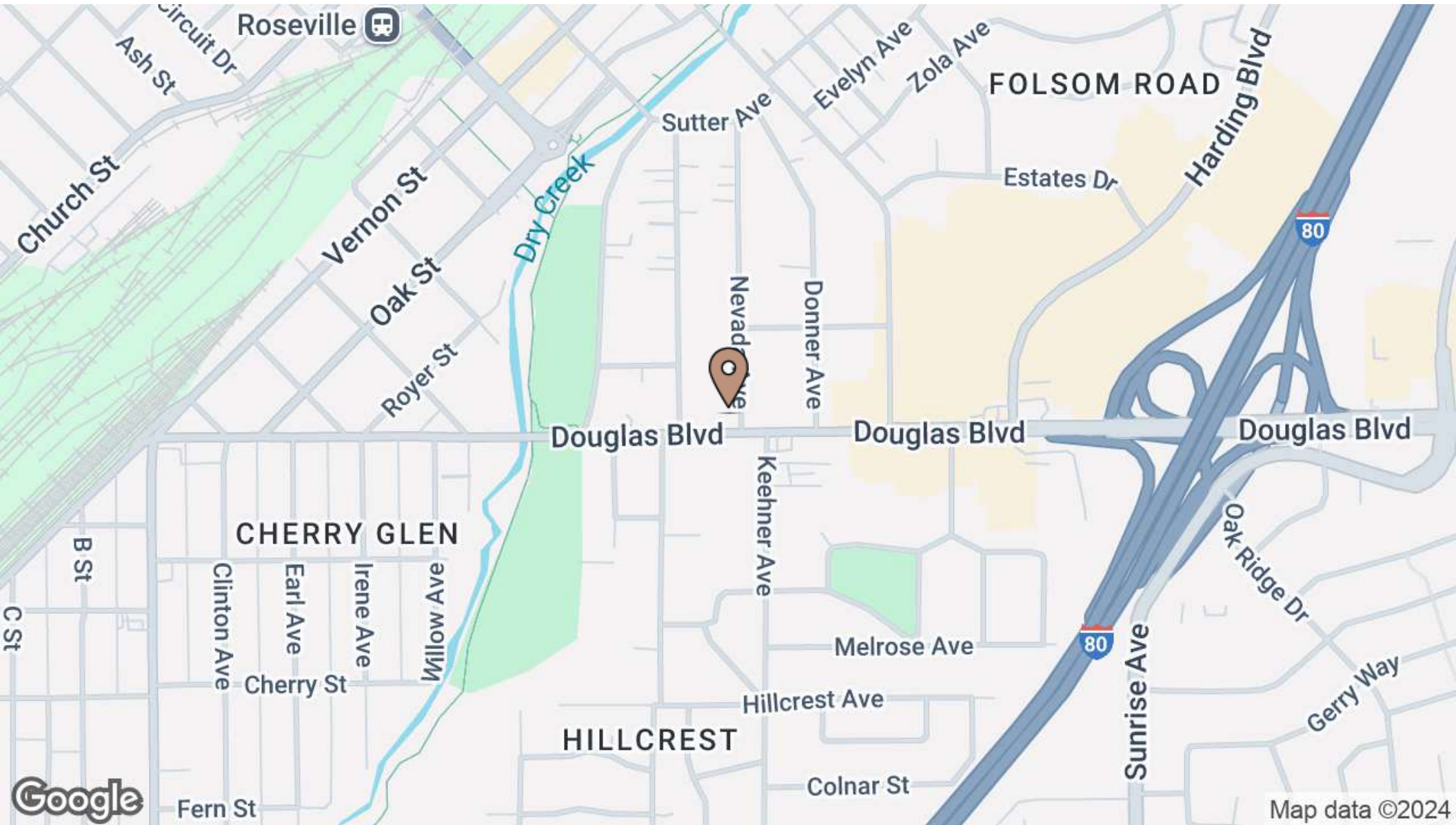
915 Douglas Blvd

Roseville, CA 95678

For Lease

Executive Offices

Location Map



JIM ESWAY

P: 916.788.9731

jesway@crossroadventures.net

CROSSROAD

VENTURES GROUP

your real estate compass.

915 Douglas Blvd

Roseville, CA 95678

For Lease

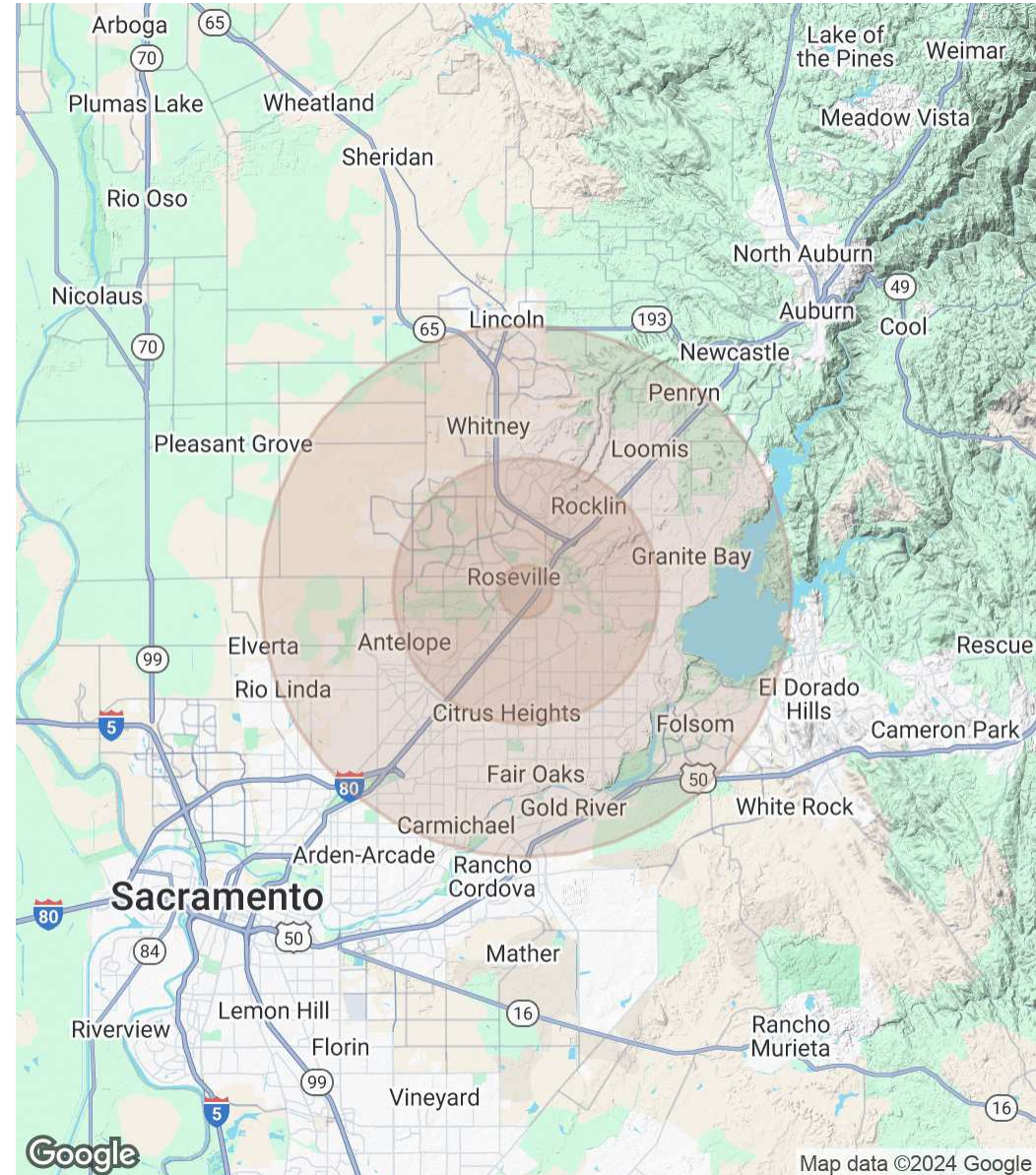
Executive Offices

Demographics Map & Report

Population	1 Mile	5 Miles	10 Miles
Total Population	12,811	296,344	758,544
Average Age	42.9	39.7	40.0
Average Age (Male)	41.3	38.0	38.3
Average Age (Female)	44.5	41.3	41.5

Households & Income	1 Mile	5 Miles	10 Miles
Total Households	5,859	113,564	288,561
# of Persons per HH	2.2	2.6	2.6
Average HH Income	\$66,063	\$101,906	\$101,279
Average House Value	\$345,726	\$414,718	\$418,660

2020 American Community Survey (ACS)



JIM ESWAY

P: 916.788.9731

jesway@crossroadventures.net

CROSSROAD

VENTURES GROUP

your real estate compass.