

DITMAS PARK, BROOKLYN NY

1041 CONEY ISLAND AVE



SPACE DETAILS

LOCATION

Corner of Coney Island Ave and Foster Ave

SPACE

Ground Floor 10,000 SF

COMMENTS

Two blocks to the Newkirk train   with annual ridership of 1,978,254

POSSESSION

Immediate

SPACE DETAILS

- Divisions Available From 800 SF - 10,000 SF
- Ceiling Height 12' - 14'
- HVAC, Sprinkler System
- Floor to Ceiling Glass Frontage
- Space to be delivered in Vanilla Box condition
- Parking Available

CONTACTS

MEYER DAGMY

718-249-3613
m@modcre.com

EDDIE MAMIYE

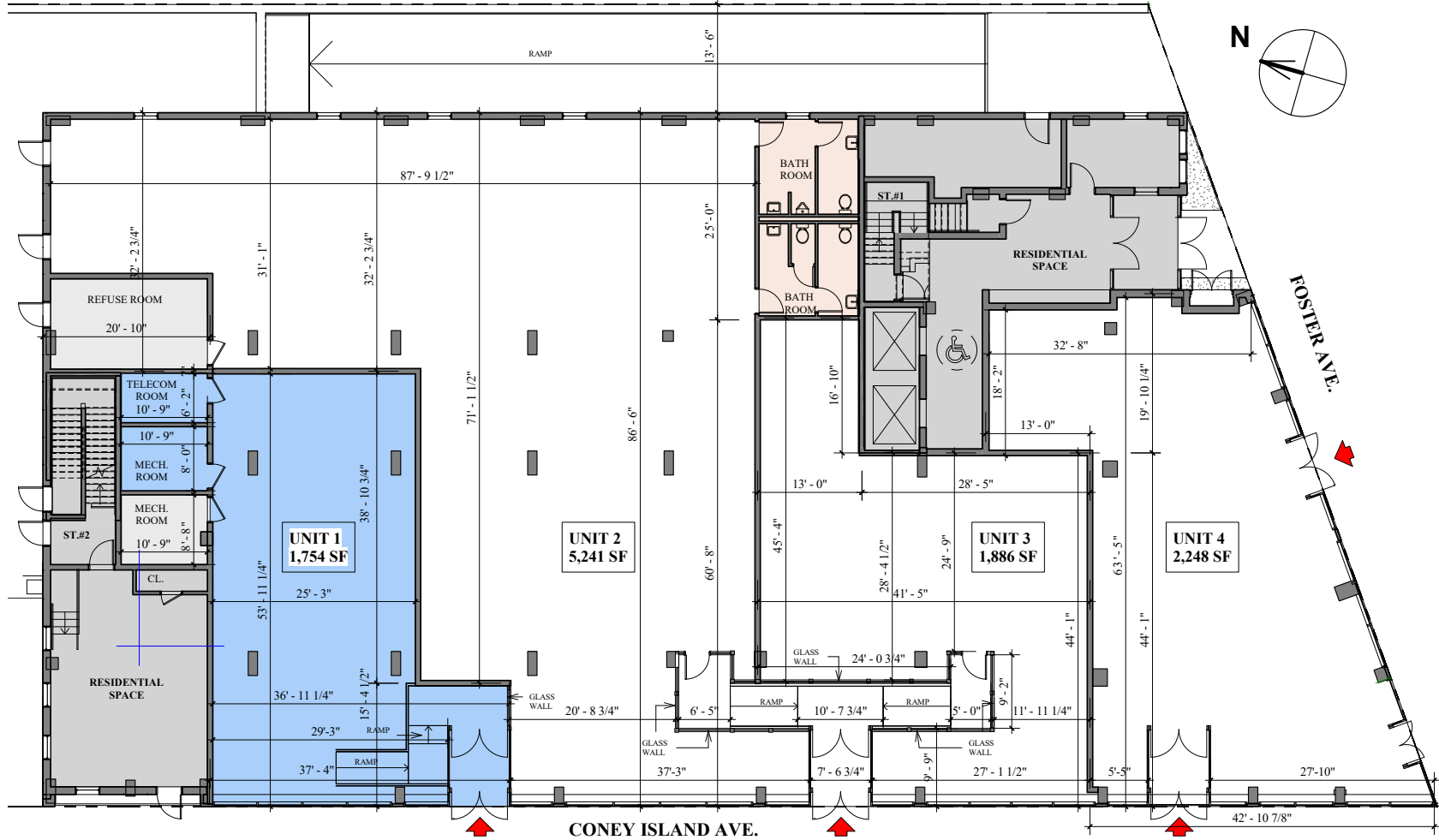
917.379.6719
e@modcre.com

2774 CONEY ISLAND AVE, BROOKLYN, NY 11235



FLOOR PLANS

SPECTOR DESIGN COMPANY



DOMA ARCHITECTURE, DESIGN & ENGINEERING GROUP LLC
 JOSEPH P. SPECTOR, RA, AIA
 139 FULTON ST, SUITE 214, NEW YORK NY 10038
 TEL: 646-330-0451, FAX: 914-885-1128
 E-MAIL: ARCHITECTS@SPECTORINC.COM

NEW MIXED-USE BUILDING
 1041 Coney Island Avenue
 Brooklyn, NY 11230
 Block: 5232 Lot: 37

Date: **05/09/2022**
 Page No:

Sheet Title: **FIRST FLOOR TENANT SPACES PLAN**

Sheet: **001.02**