

1911 BROADWAY

INDUSTRIAL SPACE FOR LEASE

BUSHWICK, BROOKLYN 11206



INQUIRE FOR PRICE



TAHARI
REALTY

HIGHLIGHTS

- 2,200 SF
- 1,500 SF Basement
- 26 Foot High Ceilings
- 15ft Drive In
- Column Free
- Steps From The L Train
- Private Restroom

TABLE OF CONTENTS

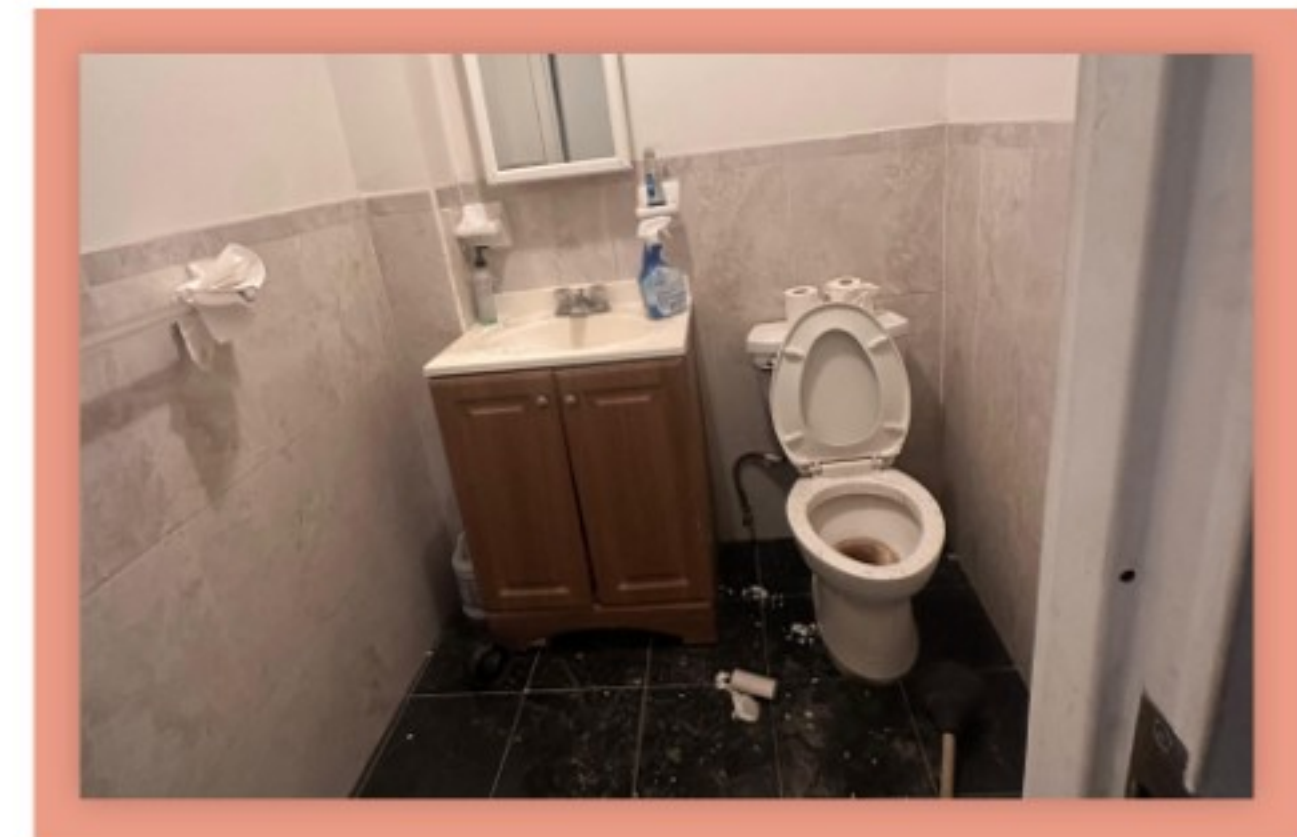
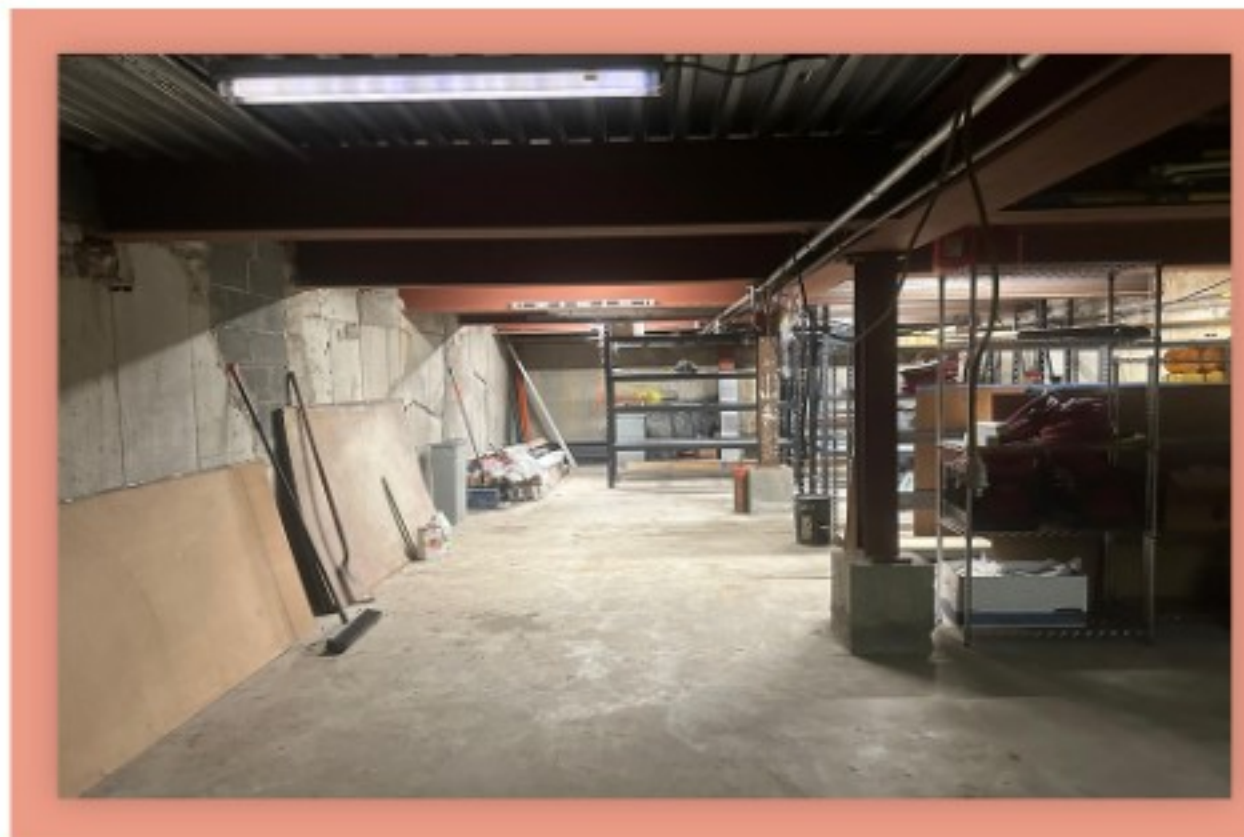
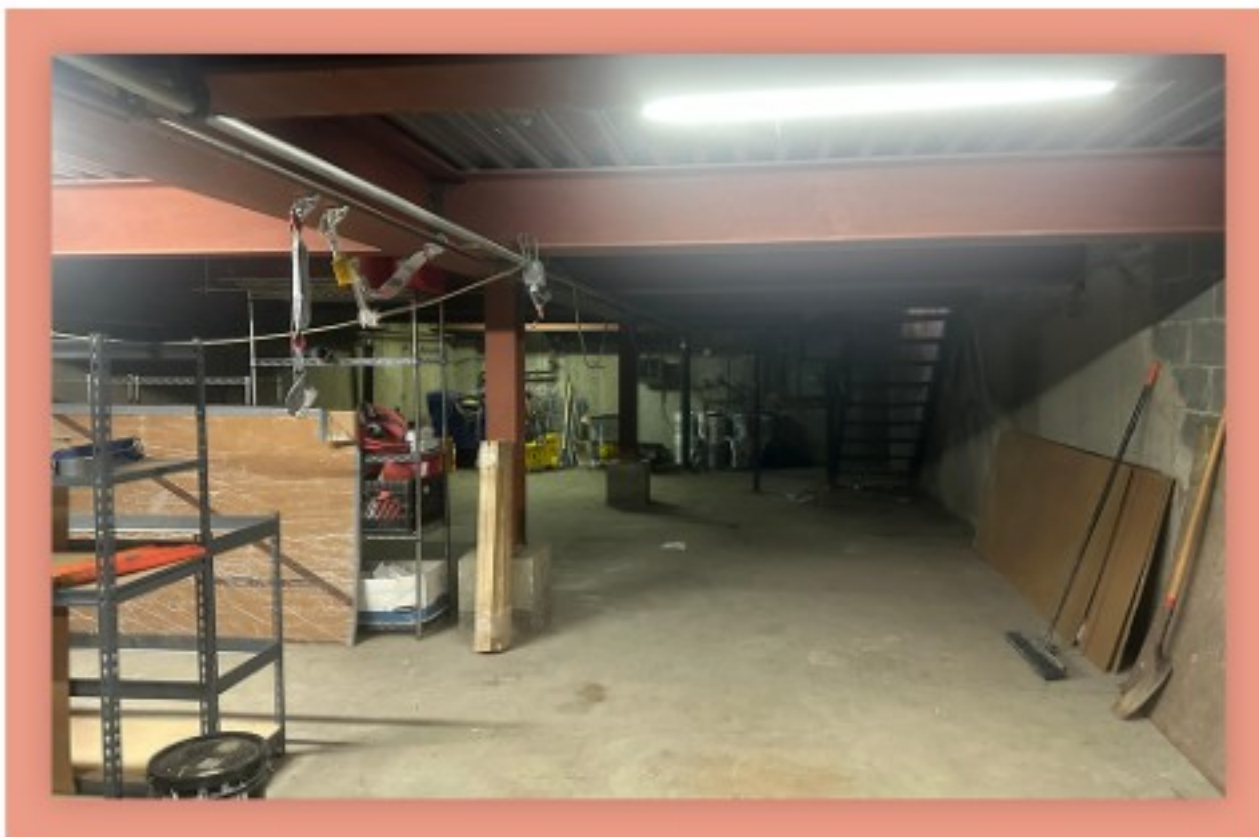
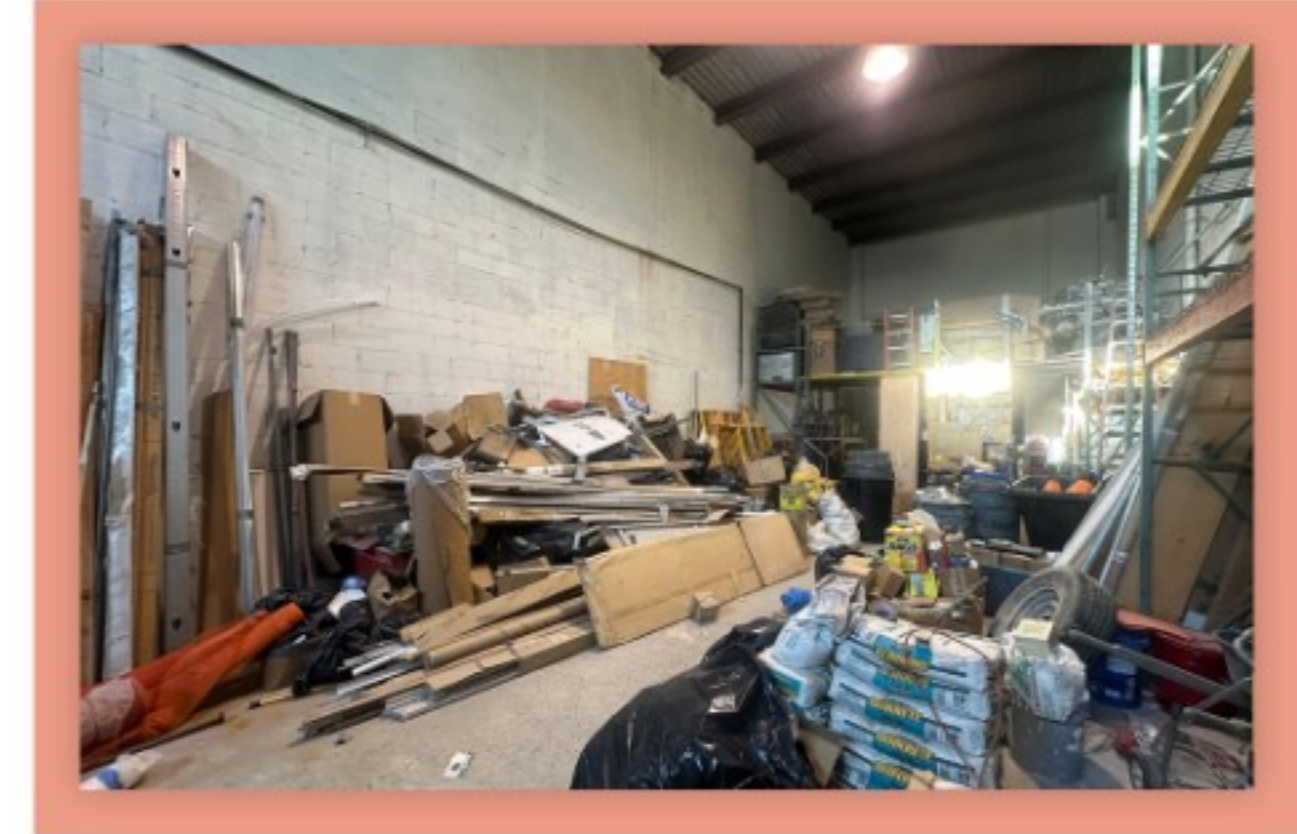
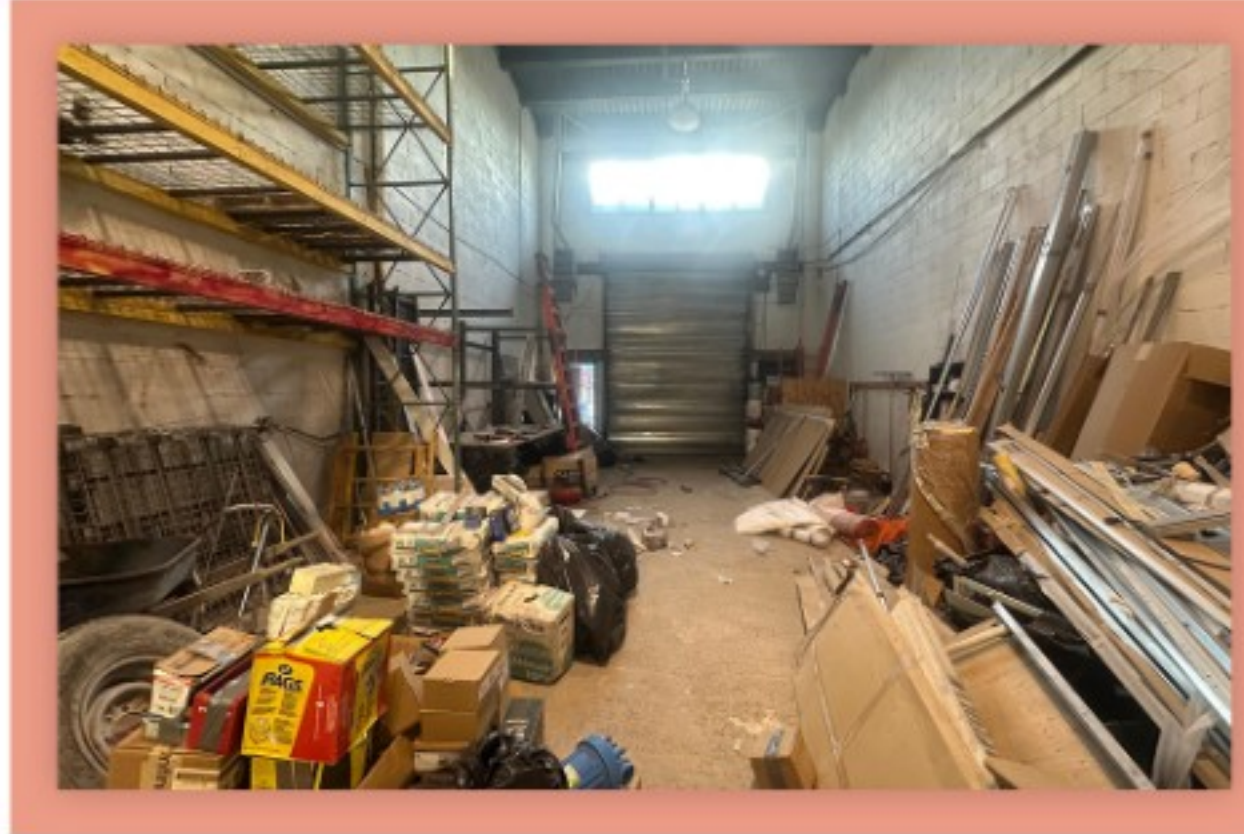
About The Nieghborhood	2
Property Photos	3

ABOUT THE NEIGHBORHOOD

Located in the heart of Bushwick, this property offers an exceptional opportunity to plant your business in one of Brooklyn's fastest growing and most in-demand neighborhoods. Bushwick has quickly become a hub for manufacturing, design, production, and creative industry tenants, driven by new development, strong transit access, and a rapidly expanding residential and business community. With its energetic street scape and steady growth, Bushwick continues to attract innovative companies looking for both space and visibility. Ideal for warehouse, fabrication, production, studio, or light manufacturing use.



PROPERTY PHOTOS



1911 BROADWAY

FOR MORE DETAILS CONTACT US

ARYEH VILINSKY

917-450-9773

aryeh@taharirealty.com

ABRAHAM COHEN

917-890-6669

acohen@taharirealty.com

TAHARI
REALTY

www.taharirealty.com

**393 Lafayette St, Fl 2
New York, NY, 10003**