

COMMERCIAL LAND FOR SALE

11015 Broadway

Crown Point, IN 46308



HIGHLIGHTS AND FEATURES

- Full site engineering in place with City approvals
- Utilities to the building pad
- Parking lot base in place
- Drawings are complete if the same building at Lot 14 is wanted.
- Commercial use. medical, office, other commercial

OFFERING SUMMARY

Sale Price:	Negotiable
Lot Size:	1.7 Acres
Zoning:	Business 3
Utilities:	All At Site
Topography:	Level

FOR MORE INFORMATION

Jennifer Gaudy (219) 775-9105 jgaudy@crosspm.com



SITE PLAN

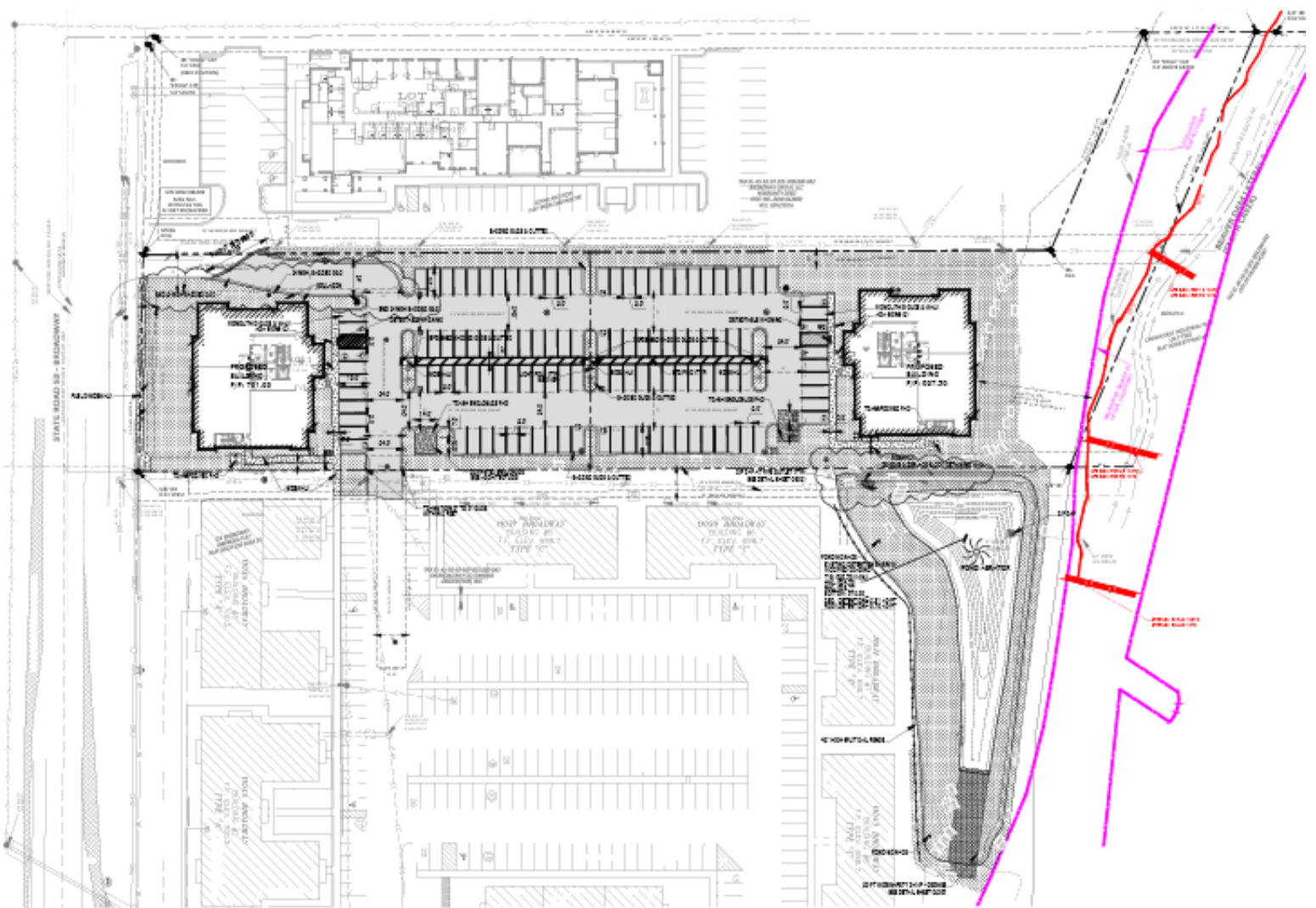
SITE DATA	
1. ZONING	BY RIGHT/REQUIREMENT
2. LOT AREA	1.11 ACRES (47,800 SQ. FT.)
3. LOT AREA	1.11 ACRES (47,800 SQ. FT.)
4. LOT AREA	1.11 ACRES (47,800 SQ. FT.)

LEGEND

	EXISTING BUILDING		PROPOSED BUILDING
	EXISTING PARKING		PROPOSED PARKING
	EXISTING ROAD		PROPOSED ROAD
	EXISTING UTILITY		PROPOSED UTILITY

NOTES

1. DIMENSIONS WILL BE TO FACE OF BUILDING AND SHALL BE TO FACE OF CURB OR OTHER ADJACENT PROPERTY.



FOR MORE INFORMATION

Jennifer Gaudy (219) 775-9105 jgaudy@crosspm.com

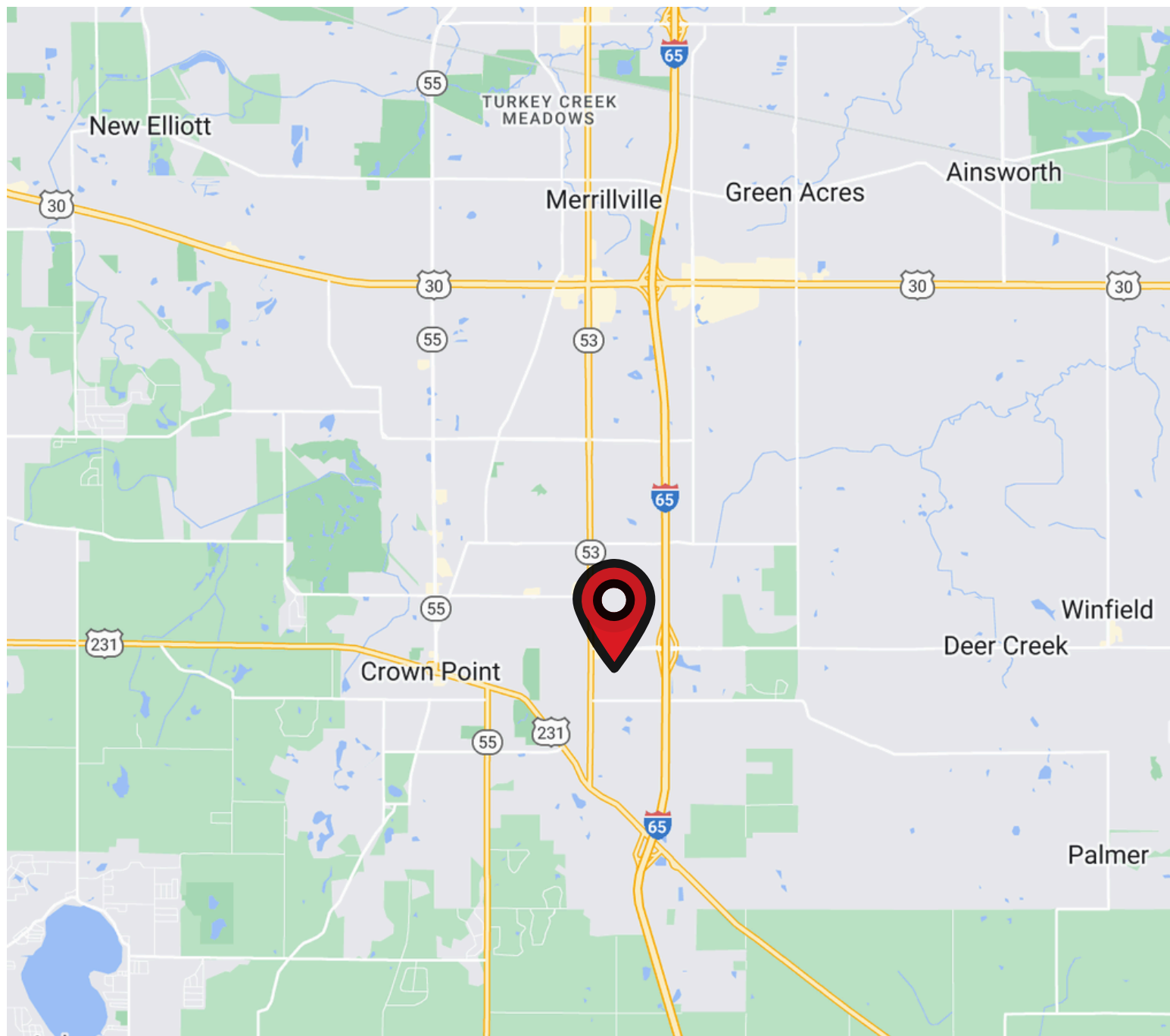


COMMERCIAL LAND FOR SALE

11015 Broadway

Crown Point, IN 46308

MAP



FOR MORE INFORMATION

Jennifer Gaudy (219) 775-9105 jgaudy@crosspm.com

