

OFFERING MEMORANDUM

Commercial Retail, Office, Medical Space



KEVIN PEPE

☎ Office: 508-862-9000

☎ Cell: 508-962-5022

✉ KPepe@ComRealty.net

📍 222 West Main Street, Hyannis, MA 02601

🌐 <https://comrealty.net/>



11 Evergreen Circle

FOR LEASE

AREA

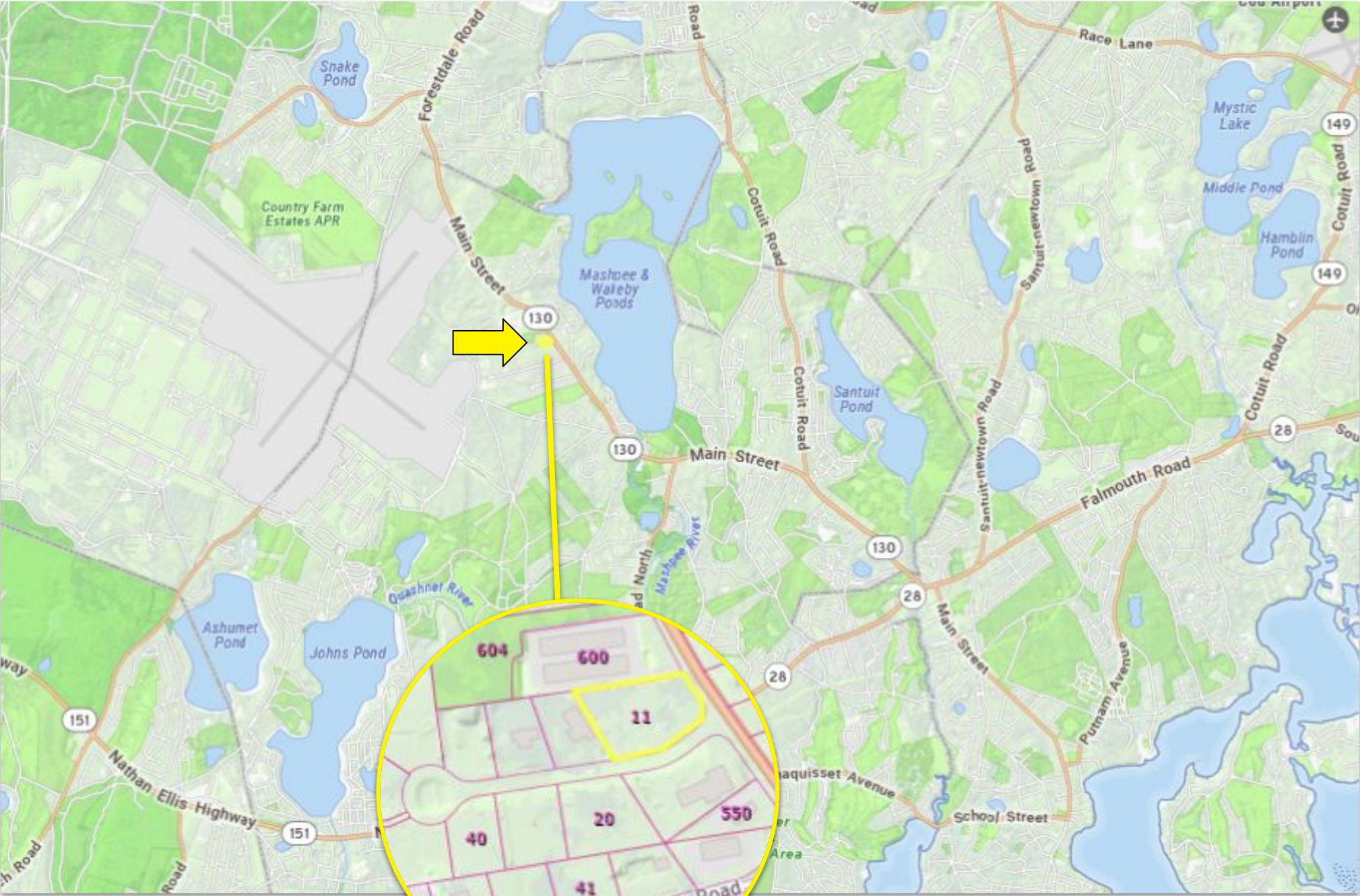
MASHPEE

\$3,500/Month NNN

±2,160 Sq. Ft.

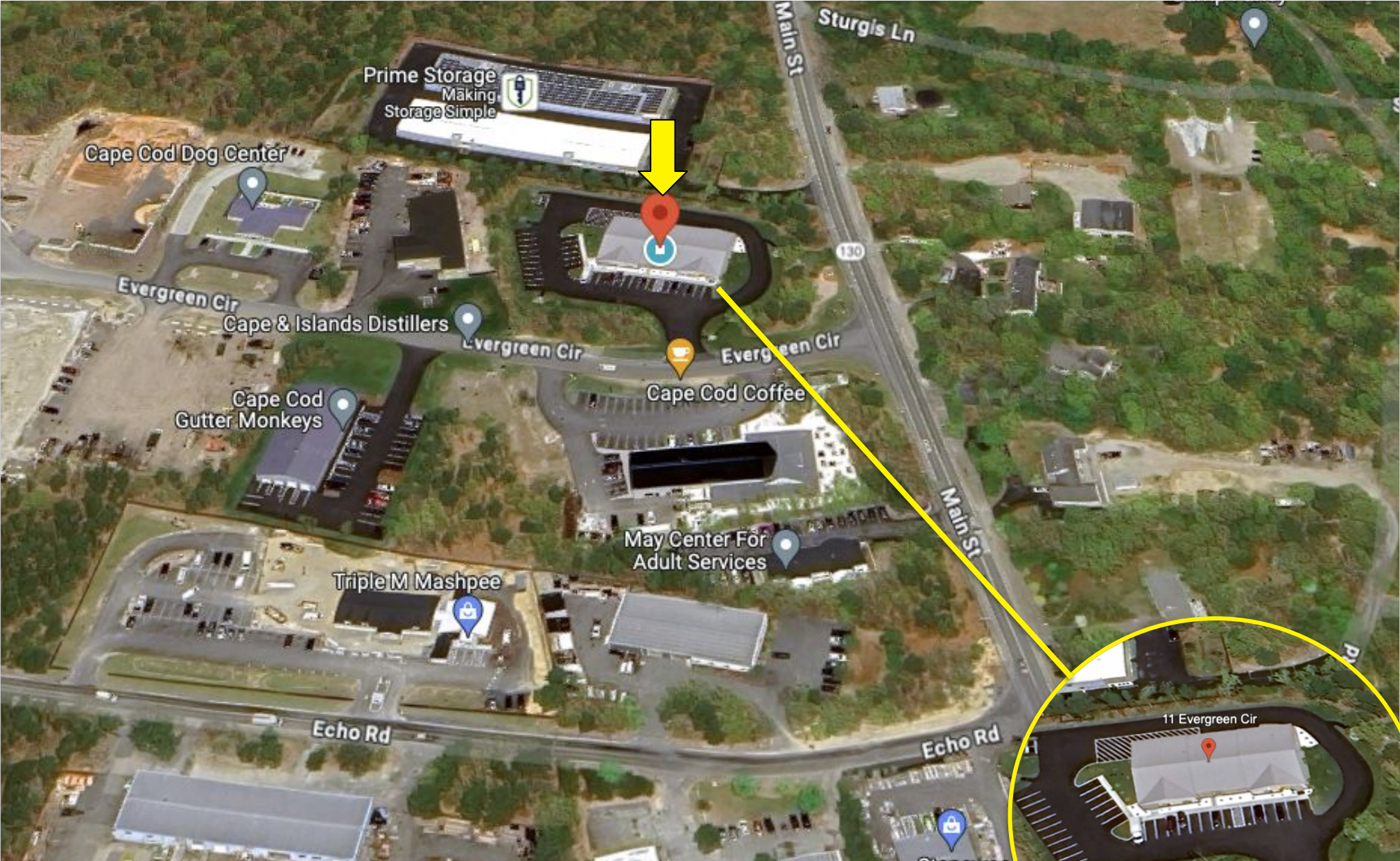
PROPERTY LOCATION

11 Evergreen Cir, Mashpee, MA 02649



PROPERTY LOCATION

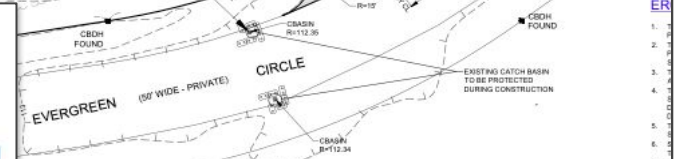
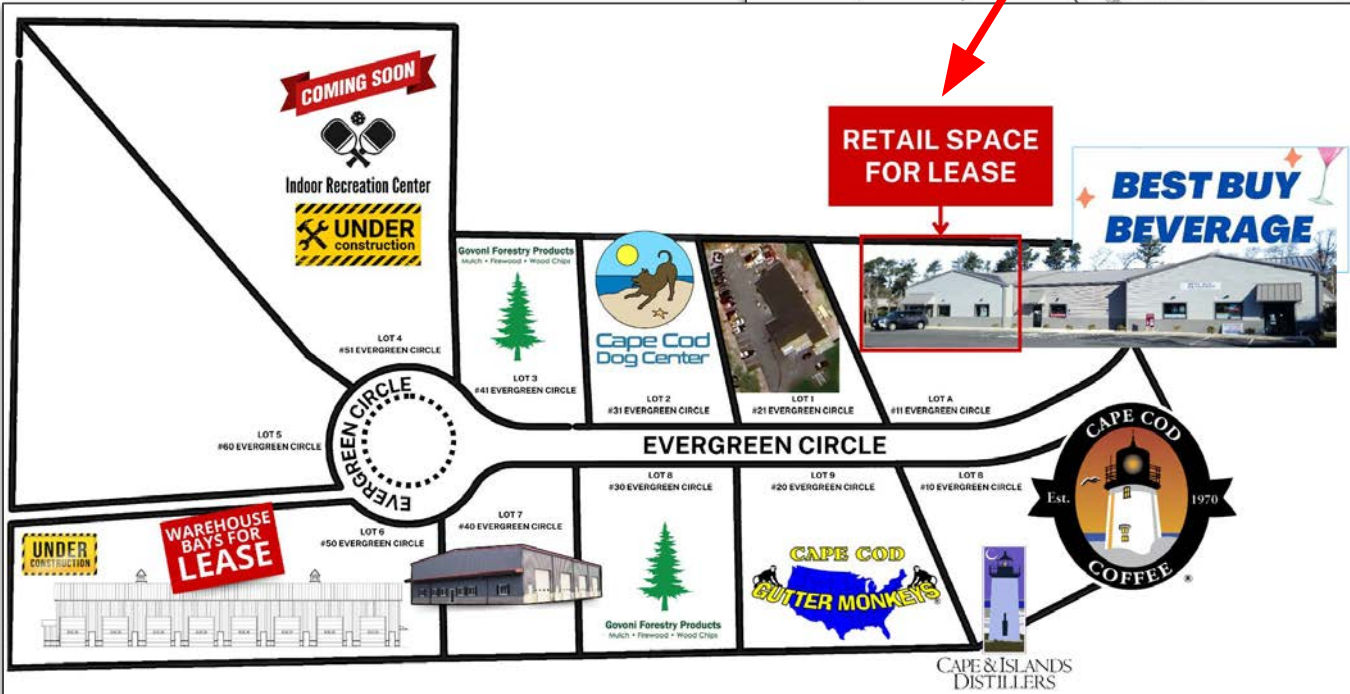
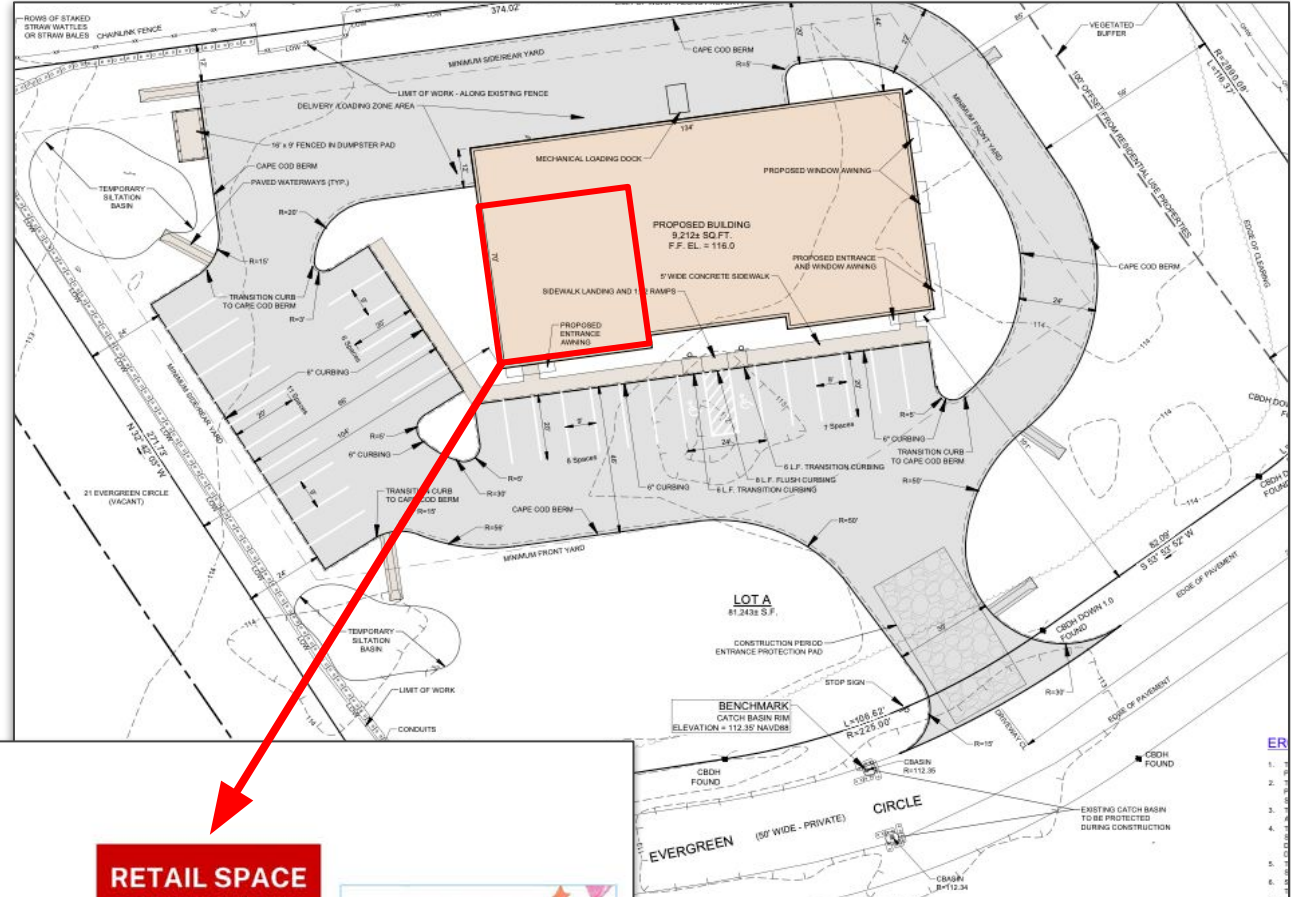
11 Evergreen Cir, Mashpee, MA 02649



PROPERTY SITE PLANS & DETAILS

11 Evergreen Cir, Mashpee, MA 02649

Year Built	2021
Total Building Size	9,212 SF
Available Space	2,160 SF
Stories	1
Style	Store
Book/Page	32395-290
Parcel ID	19-10-12
Zoning	C3 & Light Industrial Overlay District



PROPERTY PHOTOS

11 Evergreen Cir, Mashpee, MA 02649



Commercial
Realty Advisors

Commercial Realty Advisors' Disclaimer

This information has been secured from sources we believe to be reliable, but we make no representation or warranties, expressed or implied, as to the accuracy of the information contained herein. Commercial Realty Advisors, Inc. and the agent presenting this opportunity represent the Seller / Lessor, and are neither architects, engineers, inspectors, accountants nor attorneys, and therefore all buyers / tenants must consult with their own architects, engineers, inspectors, accountants or attorneys as to financial, zoning, lot line, handicapped accessibility, flood plain, mechanical, structural, or environmental concerns. Buyer must verify all information and bears all the risk for inaccuracies. Referenced square footage and acreage and sketched outlines are approximate, and this information package is subject to change.

ABOUT

Commercial Realty Advisors, Inc. specializes in commercial and industrial real estate, mergers, acquisitions, joint ventures, divestitures, and other business broker strategies. It is a commercial and real estate brokerage based in Hyannis, Massachusetts, specializing in middle-market transitions. The culture of our firm is that of an investment bank with a premium placed on intellectual vitality, relationship management, and knowledge of geographic markets. A cadre of well-educated and successful experts partner with clients to achieve objectives in a cost and time- effective manner. Our business is broadly based. Our real estate practice includes development, investment, and other commercial sale, lease, and management arrangements. Transactions include manufacturing, retailing, food processing, restaurant and hospitality, golf course, marinas, and other businesses.



SCAN THE QR
CODE TO VISIT
COMREALTY.NET!

KEVIN PEPE

Managing Director

Office: 508-862-9000, ext. 105

kpepe@comrealty.net

**COMMERCIAL REALTY
ADVISORS, INC.**

222 West Main St. Hyannis, MA
508-862-9000 | comrealty.net

LICENSE #6295

