

OFFERING MEMORANDUM

12498 Riverside Drive, Fort Myers FL 33919

Caloosahatchee
River

Cape Coral Bridge

Riverside Dr

College Pkwy

• Gulf Access

• Unaffected by Hurricane Ian

• Path to 79 Units



📍 1412 Jackson St. Ste 1 | Fort Myers, FL 33901
🌐 www.fischlerco.com

Offered By
Phil Fischler
239.895.1060 | pjf@fischlerco.c

CONFIDENTIALITY & DISCLAIMER

All materials and information received or derived from Fischler Property Company LLC its directors, officers, agents, advisors, affiliates and/or any third party sources are provided without representation or warranty as to completeness, veracity, or accuracy, condition of the property, compliance or lack of compliance with applicable governmental requirements, developability or suitability, financial performance of the property, projected financial performance of the property for any party's intended use or any and all other matters.

Neither Fischler Property Company LLC its directors, officers, agents, advisors, or affiliates makes any representation or warranty, express or implied, as to accuracy or completeness of the any materials or information provided, derived, or received. Materials and information from any source, whether written or verbal, that may be furnished for review are not a substitute for a party's active conduct of its own due diligence to determine these and other matters of significance to such party. Fischler Property Company LLC will not investigate or verify any such matters or conduct due diligence for a party unless otherwise agreed in writing.

EACH PARTY SHALL CONDUCT ITS OWN INDEPENDENT INVESTIGATION AND DUE DILIGENCE.

Any party contemplating or under contract or in escrow for a transaction is urged to verify all information and to conduct their own inspections and investigations including through appropriate third party independent professionals selected by such party. All financial data should be verified by the party including by obtaining and reading applicable documents and reports and consulting appropriate independent professionals. Fischler Property Company LLC makes no warranties and/or representations regarding the veracity, completeness, or relevance of any financial data or assumptions. Fischler Property Company LLC does not serve as a financial advisor to any party regarding any proposed transaction. All data and assumptions regarding financial performance, including that used for financial modeling purposes, may differ from actual data or performance. Any estimates of market rents and/or projected rents that may be provided to a party do not necessarily mean that rents can be established at or increased to that level. Parties must evaluate any applicable contractual and governmental limitations as well as market conditions, vacancy factors and other issues in order to determine rents from or for the property.

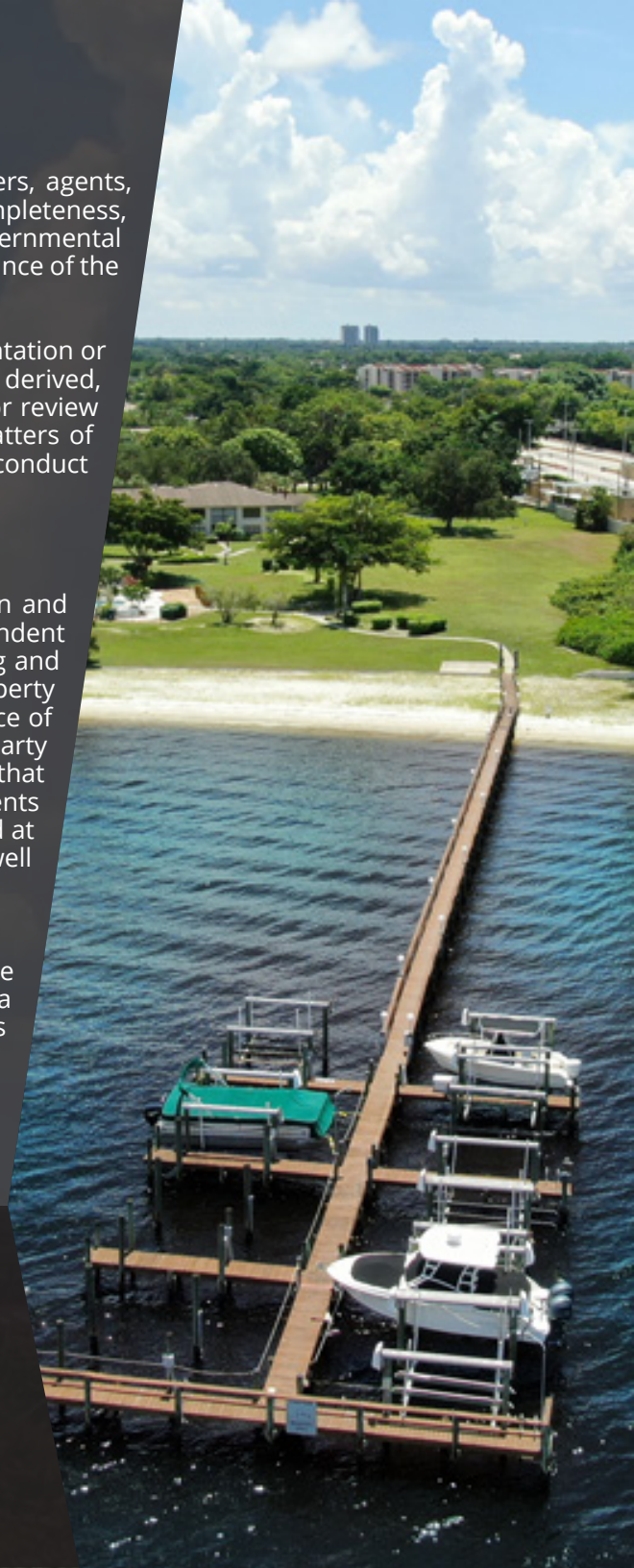
Legal questions should be discussed by the party with an attorney. Tax questions should be discussed by the party with a certified public accountant or tax attorney. Title questions should be discussed by the party with a title officer or attorney. Questions regarding the condition of the property and whether the property complies with applicable governmental requirements should be discussed by the party with appropriate engineers, architects, contractors, other consultants and governmental agencies. All properties and services are marketed by Fischler Property Company LLC in compliance with all applicable fair housing and equal opportunity laws.

Phil Fischler

239.895.1060 | pjf@fischlerco.com



📍 1412 Jackson St. Ste 1 | Fort Myers, FL 33901
🌐 www.fischlerco.com



EXECUTIVE SUMMARY



Property Address	12498 Riverside Drive, Fort Myers, FL 33919
Sale Price	Call for Pricing
Lot Size	7.90 Acres
Zoning	Residential Multi-family 2, RM-2
Future Land Use	Central Urban
Frontage	±590 liner feet of riverfront

ZONING

- RM-2, Multi-family and single-family Residential permitted by-right
- Base density 10 units per acre (79 units)
- Property is encumbered by some 1981 zoning ordinances that subjectively limited the height and density.
- Said ordinances can be removed through a convention rezoning process, from "RM-2 with conditions" to "RM-2 subject only to the County Land Development Code."
- County Staff has advised this can be a 4 month process

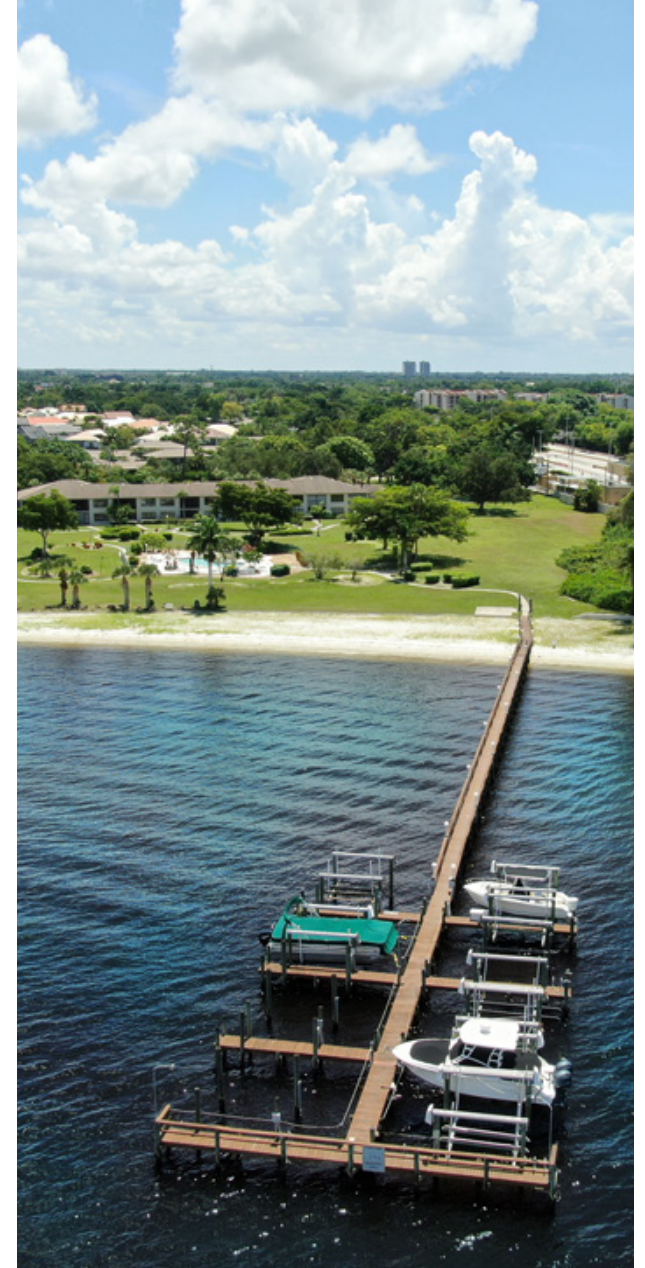
BUILDING HEIGHT

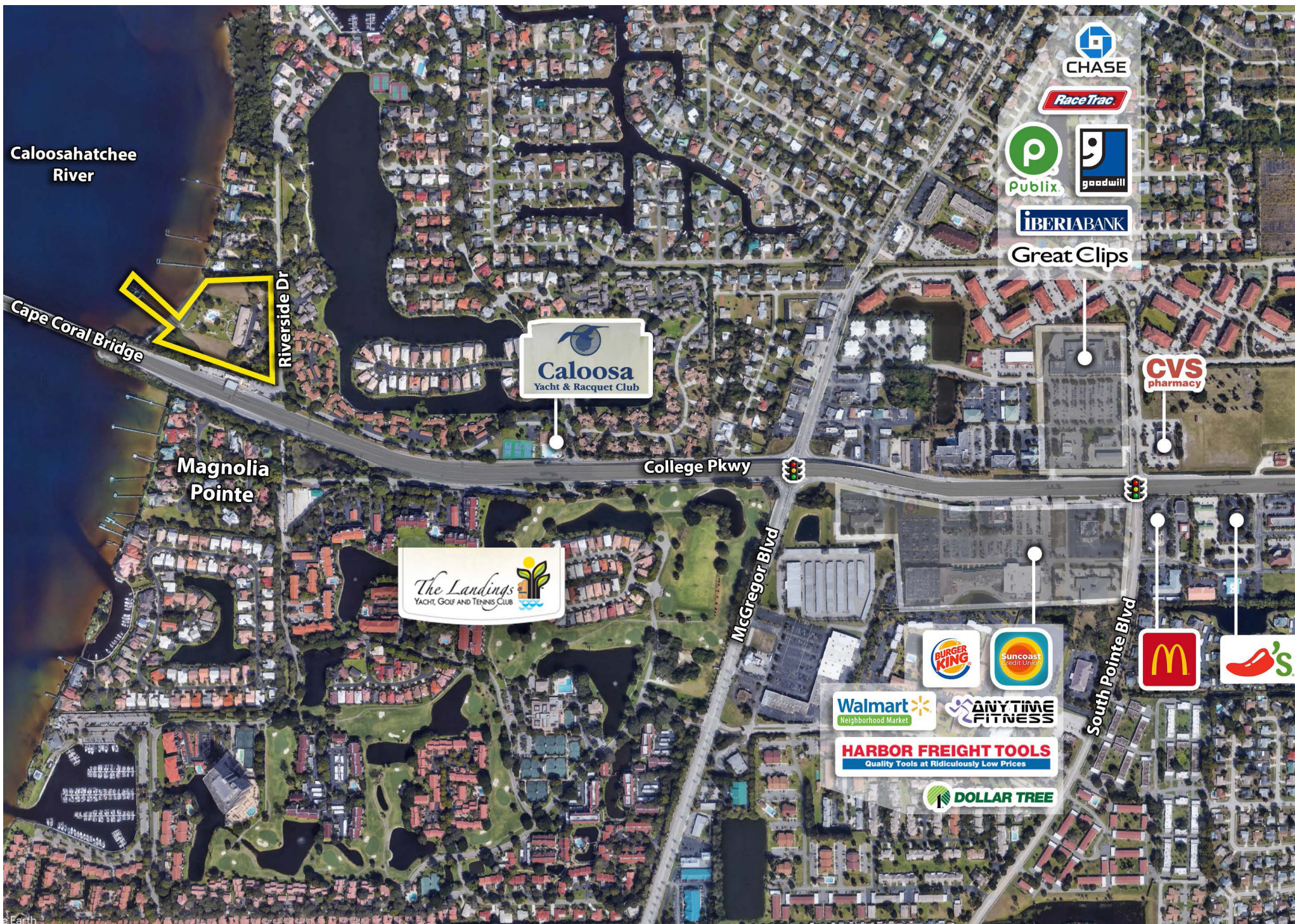
- The building height can be increased by one foot for every one-half foot that all required street, side, waterbody, and rear setbacks are also increased. Preliminary analysis yield a +90' building height. Direction questions to: Lee County, Supervisor of Development Services

HIGHLIGHTS

- An extremely rare opportunity to acquire 7.9-acres of contiguous property on the famed Caloosahatchee River along Millionaires Row.
- Features an unheard-of 590 linear feet of meticulously maintained private beach to fully enjoy southwest Florida's legendary sunsets and waterfront lifestyle.
- Located in the sweet spot of Fort Myers, this site is surrounded by some of the City's most affluent demographics, and adjacent to two of the area's most storied country clubs -- The Landings Golf and Tennis Club and The Caloosa Yacht and Racquet Club.
- Close proximity to the City's most celebrated restaurants, private clubs, golf courses, marinas, entertainment, recreation, waterfront dining, art & culture scene, and boutique shops and cafés.
- The property also enjoys a 235-foot long dock with deep-water, Gulf-access, and 14 wet slips.
- This opportunity offers an exceptional chance to create a uniquely private, luxury, gated, single-family community, or a sprawling, private, family compound.

PROPERTY PHOTOS







Magnolia
Pointe

Caloosahatchee
River

College Pkwy

Riverside Dr

Cape Coral Bridge



DEMOGRAPHIC SUMMARY

HILLSBOROUGH COUNTY KEY FACTS



167,698
POPULATION

54.9

MEDIAN
AGE



AVG.
HOUSEHOLD
SIZE

\$60,471
Median Housing
Value

BUSINESS



11,325
TOTAL BUSINESSES



90,927
TOTAL EMPLOYEES

INCOME

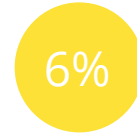


\$60,471
Median Household
Income



\$43,443
Per Capita
Income

EDUCATION



No High
School
Diploma



32%
High School
Graduate

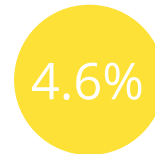


28%
Some
College



34%
Bachelo/Grad/
Prof Degree

EMPLOYMENT



UNEMPLOYMENT
RATE





Fort Myers FLORIDA

#1

Best Airport in the U.S.
Southwest Florida
International Airport (RSW)

- News-Press | 2023

#1

Fastest Growing
City in America

- US News | 2024

#3

Fastest Growing
City in America

- US News | 2023

#3

Safest Place to
Live in the US

- US News | 2023

#5

Fastest Growing Mid-
Size City in the South

- CoStar | 2022

#6

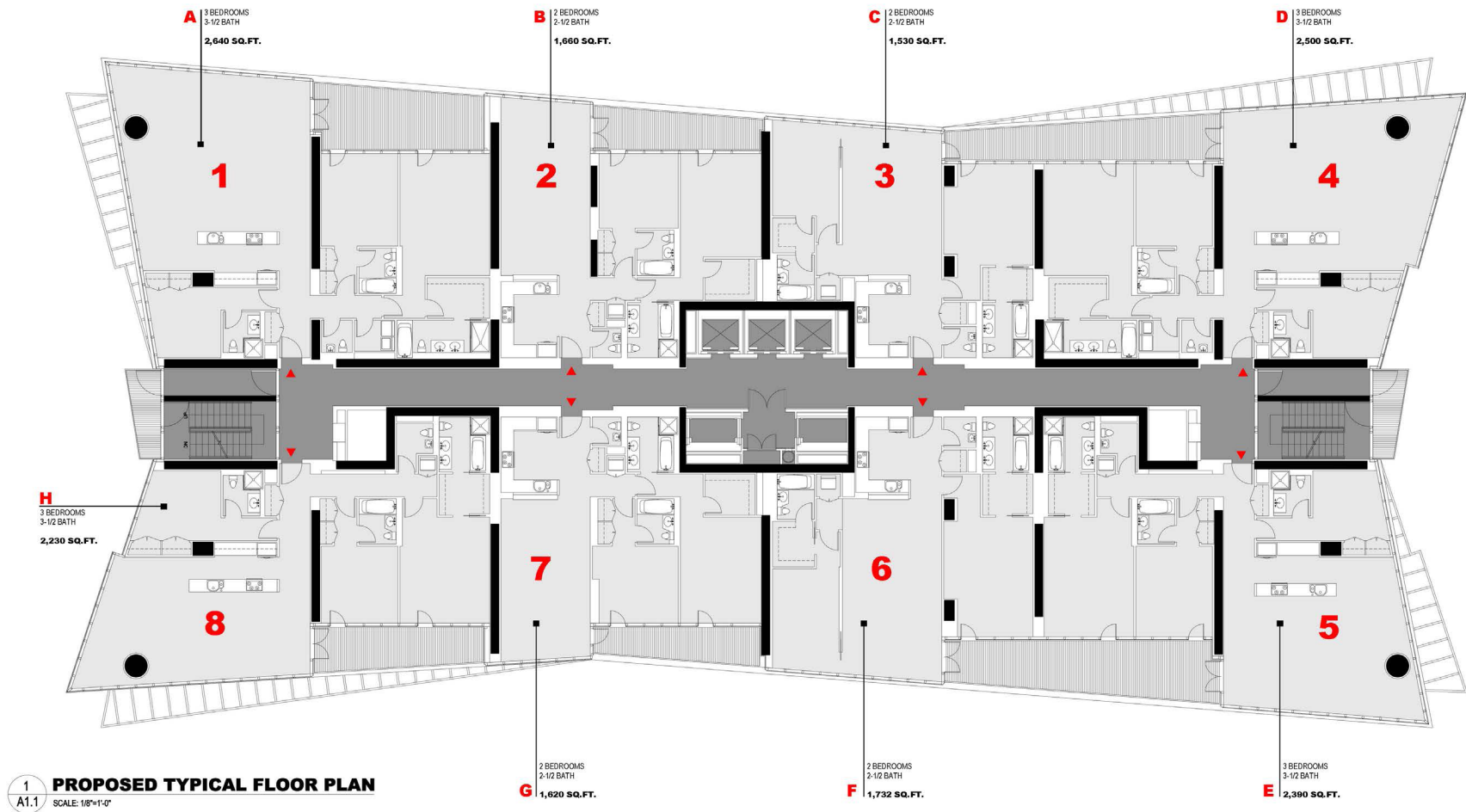
Next Hottest Place
in Real Estate

- Money | 2022

SITE PLAN



PROPOSED FLOORPLAN



TOTAL BUILDING AREA: 19,800 SQ.FT. PER FLOOR
NUMBER OF STORIES: 10
TOTAL # OF UNITS: 79

REFER TO SHEETS A1.2 & A1.3 FOR MODEL UNIT DETAILS

PROPOSED UNIT MODELS



NIT MODEL 'A'
E: 3/16"=1'-0"

THREE-BEDROOM END UNIT FLOOR PLAN
2,640 SQ.FT.



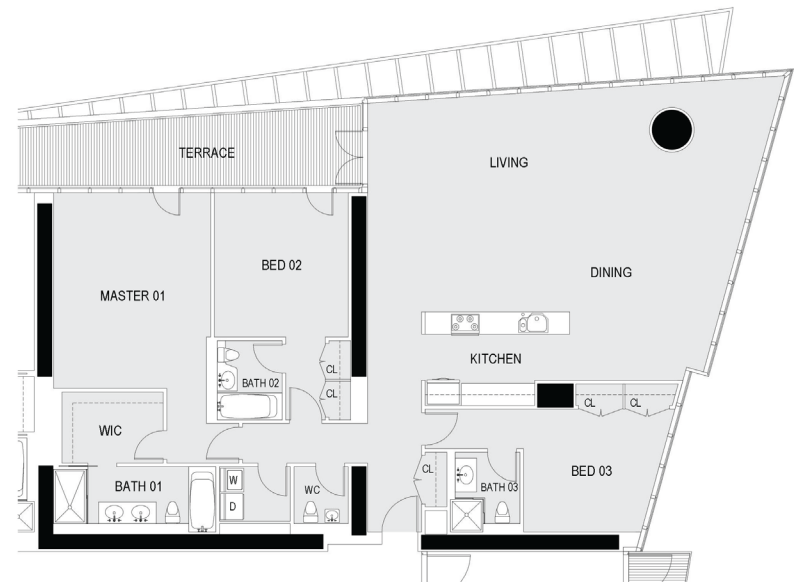
UNIT MODEL 'B'
SCALE: 3/16"=1'-0"

TWO-BEDROOM CENTER UNIT FLOOR PLAN
1,660 SQ.FT.



NIT MODEL 'C'
E: 3/16"=1'-0"

TWO-BEDROOM CENTER UNIT FLOOR PLAN
1,530 SQ.FT.



UNIT MODEL 'D'
SCALE: 3/16"=1'-0"

THREE-BEDROOM END UNIT FLOOR PLAN
2,500 SQ.FT.

PROPOSED UNIT MODELS



THREE-BEDROOM END UNIT FLOOR PLAN
2,230 SQ.FT.

NIT MODEL 'H'
LE: 3/16"=1'-0"



TWO-BEDROOM CENTER UNIT FLOOR PLAN
1,620 SQ.FT.

UNIT MODEL 'G'
SCALE: 3/16"=1'-0"



TWO-BEDROOM CENTER UNIT FLOOR PLAN
1,732 SQ.FT.

NIT MODEL 'F'
LE: 3/16"=1'-0"



THREE-BEDROOM END UNIT FLOOR PLAN
2,390 SQ.FT.

UNIT MODEL 'E'
SCALE: 3/16"=1'-0"



MEET YOUR BROKER



Phil Fischler

FOUNDER + PRESIDENT
CCIM, PE (FL, TX), LEED AP
pjf@fischlerco.com

239.895.1060 | pjf@fischlerco.com

Phil is trusted by prominent U.S. and international companies with the investment in and development of high-profile mixed use, multi-family and commercial properties from Montana to South Florida. Clients turn to him for his integrity, creativity, versatility and wide-ranging experience spanning engineering to real estate brokerage to bank advisement. With an uncanny ability to recognize opportunities and predict real estate trends, Phil's resourcefulness inspires action and delivers results. Highly regarded for honoring commitments and achieving goals, he has a track record to back up his reputation.

In 2009, Phil founded Fischler Property Company with a mission to build a legacy through inspiring investment in and restoration of Southwest Florida while helping to positively shape its inevitable growth.



 www.fischlerco.com

Phil Fischler

239.895.1060 | pjf@fischlerco.com
2310 First Street, Suite 210 | Fort Myers, FL 33901

Michael Curran

239.288.9754 | mfc@fischlerco.com
2310 First Street, Suite 210 | Fort Myers, FL 33901

No warranty or representation, express or implied, is made as to the accuracy of the information presented, and same is offered subject to errors, omissions, future changes in price, market or other conditions, withdrawal without notice, and any specific listing conditions imposed by Seller.