

±19.97 ACRES FOR SALE

HABBERTON RD & DON TYSON PKWY

SPRINGDALE, ARKANSAS 72764



Horn Ln

Habberton Rd

Don Tyson Pkwy

TRAIL ACCESS



COREY FUHRMAN

BROKER
479.504.2034
COREY@BENNETTCRE.COM

5512 WEST WALSH LN, #201, ROGERS, AR 72758 | 479.278.4040 | BENNETTCRE.COM

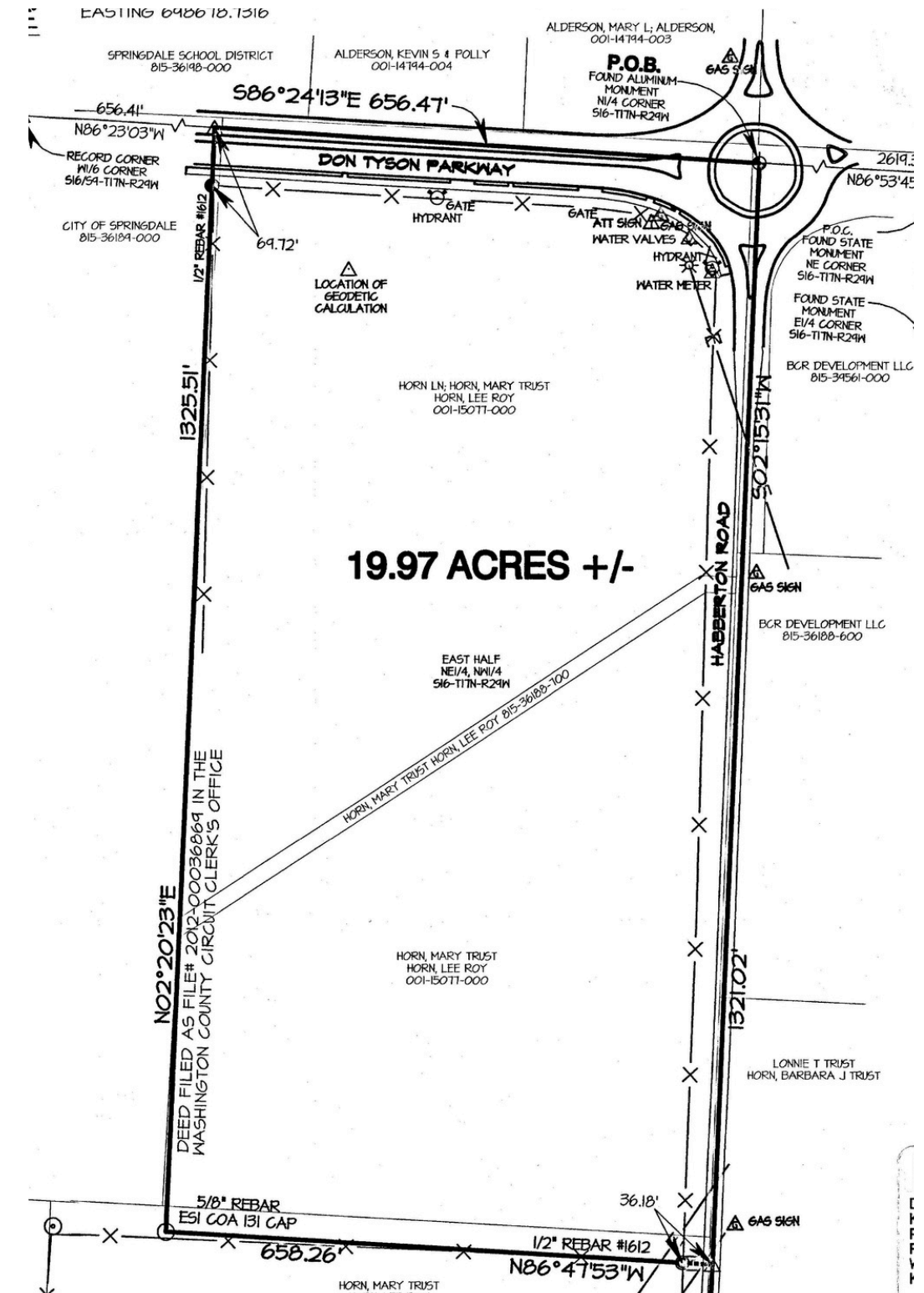
SITE OVERVIEW

AVAILABLE:	±19.97 AC
ASKING PRICE:	\$1,700,000
COST PER AC:	\$85,127 / AC
ZONING:	MF-16

PROPERTY HIGHLIGHTS

- + PRIME CORNER LOCATION AT HABBERTON & DON TYSON
- + IDEAL FOR SINGLE-FAMILY OR MULTI-FAMILY PROJECTS
- + NEXT TO THE THRIVING HABBERTON RIDGE COMMUNITY
- + STEPS FROM WILLIE GEORGE PARK
- + CONVENIENT ACCESS TO NEARBY SCHOOLS

GOOGLE EARTH VIEW



COREY FUHRMAN
BROKER
479.504.2034
COREY@BENNETTCRE.COM

HABBERTON RD & DON TYSON PKWY, SPRINGDALE, AR 72764

AERIAL VIEW



COREY FUHRMAN
BROKER
479.504.2034
COREY@BENNETTCRE.COM

5512 WEST WALSH LN, #201, ROGERS, AR 72758 | 479.278.4040 | BENNETTCRE.COM

HABBERTON RD & DON TYSON PKWY, SPRINGDALE, AR 72764

AERIAL VIEW



COREY FUHRMAN
BROKER
479.504.2034
COREY@BENNETTCRE.COM

5512 WEST WALSH LN, #201, ROGERS, AR 72758 | 479.278.4040 | BENNETTCRE.COM

COREY FUHRMAN

BROKER



Corey brings 6+ years of experience in Commercial Real Estate Brokerage and Development across Arkansas, with expertise in various transaction types, including office, retail, investment, and healthcare. In his time in the business, he has developed a specialty in healthcare. This includes Buyer/Tenant representation, Landlord/Seller Representation, Sale-leasebacks, and

Ground-up developments. Corey was raised in DeWitt, Arkansas, and later attended Arkansas State University, graduating with a B.S. in Finance in 2017.

ACHIEVEMENTS

- Diamond Award Winner for Total Transaction Volume: 2022
- Diamond Award Winner for Total Transaction Volume: 2021
- Platinum Award Winner for Total Transaction Volume : 2020
- Arkansas State University, 2017 : B.S. in Finance, Emphasis in Mgmt

corey@bennettcre.com

479.504.2034 | bennettcre.com

CLIENTS REPRESENTED

Arkansas Chiropractic Group	Ozark Comprehensive Dentistry	STG International
Conley Injury Clinic	Nutex Health	IVX Health
Radiant Eyecare	Jonesboro Pediatric Dentistry	Neurology Associates
MRG Exams	Autism in Motion	Alleviant Health
		Miller Commerce

SIGNIFICANT TRANSACTIONS

Tenant Rep | 3,200 SF Medical Space LEASED | Fayetteville
Landlord Rep | 4,029 SF Medical Space LEASED | Rogers
Landlord & Tenant Rep | 2,880 SF Medical Space LEASED | Fayetteville
Buyer & Seller Rep | 11,853 SF Medical Sale Leaseback SOLD | Jonesboro
Buyer Rep | 3 Acres for Medical Development | SOLD | Little Rock
Tenant Rep | 2,526 SF Medical Space LEASED | Fort Smith
Tenant Rep | 15,100 SF Medical Space LEASED | Jonesboro
Buyer & Seller Rep | 14,070 SF Medical Building SOLD | Jonesboro
Buyer & Seller Rep | 7,900 SF Medical Building SOLD | Jonesboro
Landlord & Tenant Rep | 6,500 SF Medical Build-to-suit LEASED | Conway

INVOLVEMENT

Urban Land Institute (ULI), Member
International Council of Shopping Centers (ICSC), Member
ULI Young Leaders Group (YLG), Member
NWA Emerging Leaders, Member



BENNETT
COMMERCIAL REAL ESTATE

COREY FUHRMAN
BROKER
479.504.2034
COREY@BENNETTCRE.COM

5512 WEST WALSH LN, #201, ROGERS, AR 72758 | 479.278.4040 | BENNETTCRE.COM