

CAMERON CORNER

4551 - 4583 W. Flamingo Rd., Las Vegas, NV 89103

AVAILABLE
For Lease

SUBWAY

DA LAT
VIETNAMESE CUISINE

**RAINBOW
MASSAGE**

SMOKE SHOP

VAPE · HOOKAH · PIPE

TATTOO

MDLGroup

5960 South Jones Boulevard
Las Vegas, Nevada 89118
T 702.388.1800
F 702.388.1010
www.mdlgroup.com

Michael Greene
Vice President
Lic#: S.0186326
702.388.1800
mgreene@mdlgroup.com

Luke Ramous
Senior Advisor
Lic#: S.0188531
702.388.1800
lramous@mdlgroup.com

Hayim Mizrachi, SIOR, CCIM
CEO | Principal | Broker
Lic#: B. 0143643.corp
702.388.1800
hmizrachi@mdlgroup.com



Leasing Details



\$1.60 - \$1.70 PSF NNN

Lease Rate



\$0.52 PSF

Estimated CAM



±1,400 - ±1,680 SF

Space Available

Demographics

	1 mile	3 miles	5 miles
Population			
2024 Population	20,513	142,151	383,123
Average Household Income			
2024 Average Household Income	\$60,888	\$69,035	\$74,399

Property Highlights

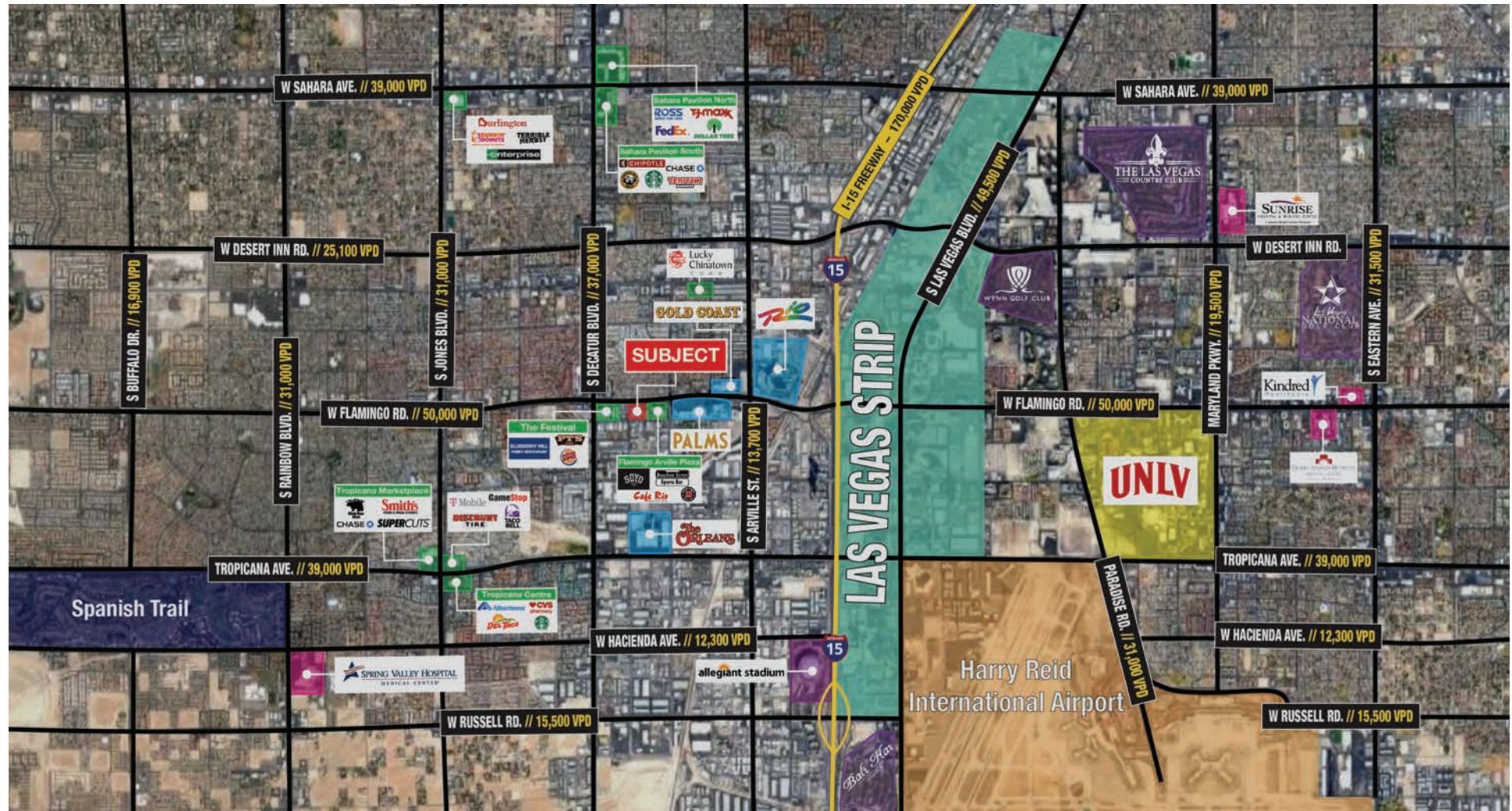
- Multi-tenant shopping center with fantastic frontage along Flamingo Road
- C-2 (General Commercial) allowing a wide variety of uses
- Located in the Central West submarket
- Great direct frontage along Flamingo Road, one block west of Decatur Road
- Flamingo Road serves as the main east/west arterial with over ±50,000 VPD (vehicles per day)
- Highly desirable location near the Palms Casino Resort and just west of the famous Las Vegas Strip

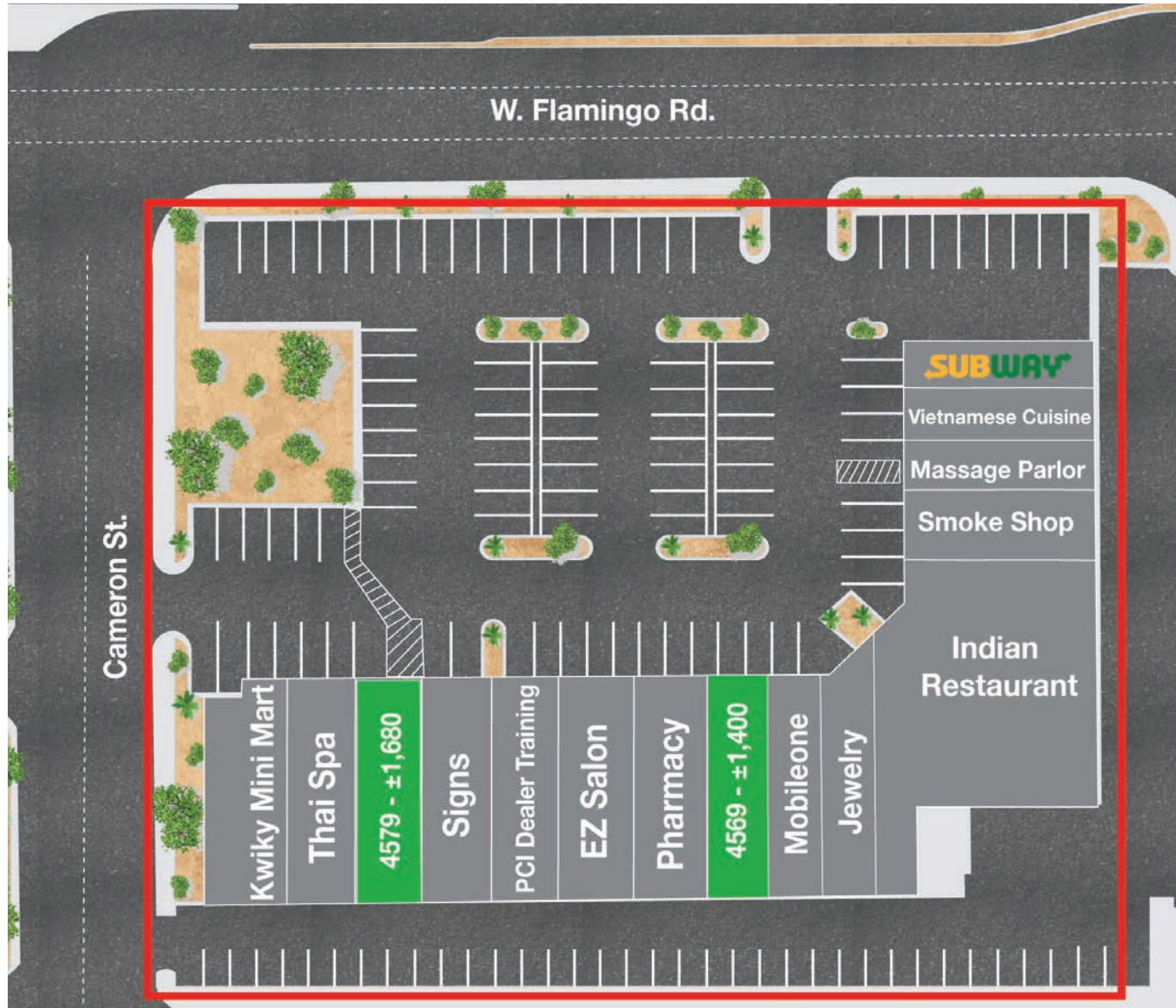
CAMERON CORNER

4551 - 4583 W. Flamingo Rd., Las Vegas, NV 89103

For Lease

● Power Centers ● Hospitals ● Airport ● Hotel & Casinos ● Golf Courses ● Schools ● Planned Communities

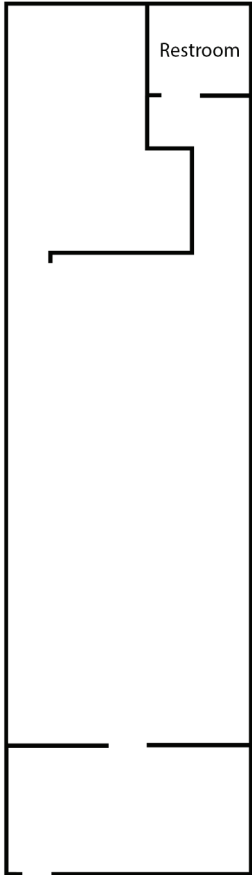




CAMERON CORNER

4551 - 4583 W. Flamingo Rd., Las Vegas, NV 89103

For Lease



Suite 4569

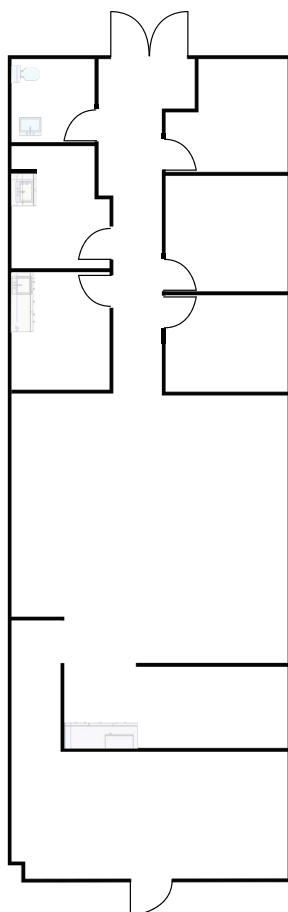
- + **Total SF:** ±1,400
- + **Lease Rate:** \$1.60 - \$1.70 PSF NNN
- + **Available:** Immediately

**Drawings and plans are not to scale. Any measurements are approximate and are for illustrative purposes only. There is no guarantee, warranty or representation as to the accuracy or completeness of any plans or designs.*

CAMERON CORNER

4551 - 4583 W. Flamingo Rd., Las Vegas, NV 89103

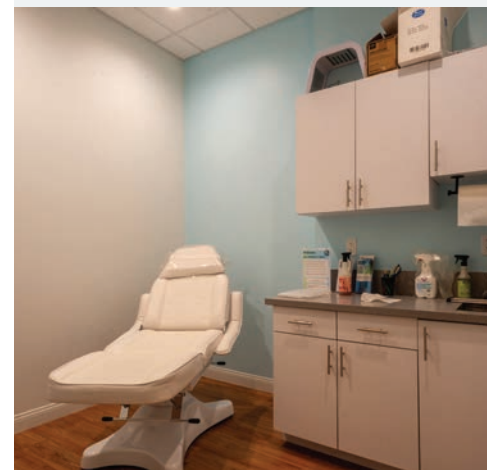
For Lease



Suite 4579

- + **Total SF:** ±1,680
- + **Lease Rate:** \$1.60 - \$1.70 PSF NNN
- + **Available:** Immediately

**Drawings and plans are not to scale. Any measurements are approximate and are for illustrative purposes only. There is no guarantee, warranty or representation as to the accuracy or completeness of any plans or designs.*



Clark County Nevada


Synopsis


As of the 2010 census, the population was 1,951,269, with an estimated population of 2,265,461 in 2022. Most of the county population resides in the Las Vegas Census County Divisions across 435 square miles. It is by far the most populous county in Nevada, and the 11th most populous county in the United States. It covers 7% of the state's land area but holds 73% of the state's population, making Nevada one of the most centralized states in the United States.


With jurisdiction over the world-famous Las Vegas Strip and covering an area the size of New Jersey, Clark County is the nation's 11th-largest county. The County is a mix of urban and rural locales that offers the convenience of city living with access to some of the nation's best outdoor recreational areas just a short drive away.

Clark County employs more than 10,000 people over 38 departments. The County has an annual budget of \$8.1 billion, which surpasses that of the state government.

Quick Facts

 **±435**
Size (Sq. Mi.)

 **2,265,461**
Population

 **290**
Pop. Density (Per Sq. Mi.)

Source: www.clarkcountynv.gov,
www.wikipedia.com

City of Las Vegas

Synopsis


The City has cultivated and championed a variety of important projects for the benefit of the community. Some highlights include the newest property MSG Sphere at the Venetian, scheduled to open 2023. MSG Sphere at the Venetian will be the first of its kind ever created. Once completed, it will be a 18,000-seat concert hall with a state of the art acoustic technology, costing \$2.2 billion.

Universal Studios is coming to Las Vegas! Universal Studios is building it's first ever permanent horror experience. Just North of the Las Vegas Strip, the 110,000 square foot attraction will add on to the 20-acre Area15 entertainment district. The City is looking forward to the new developments and is anticipating these attractions to be groundbreaking additions to the Las Vegas entertainment scene.

Quick Facts

 **±141**
Size (Sq. Mi.)

 **641,903**
Population

 **4,525**
Pop. Density (Per Sq. Mi.)

The City is also bringing new technologies and industry to Las Vegas.

The heart of the Innovation District is the International Innovation Center @ Vegas. The City of Las Vegas continues to be a hub for innovation and technology with opening 2 Innovation Centers for established and emerging tech companies developing smart technologies.

Source: www.wikipedia.com,
vegasdevmap.com

Professional Sports



Synopsis

The Las Vegas metropolitan area is home to many sports, most of which take place in the unincorporated communities around Las Vegas rather than in the city itself.

The Las Vegas Valley has three major league professional teams: the Vegas Golden Knights of the NHL, which began play in 2017 as the region's first major pro team, the Las Vegas Raiders of the NFL which began play in 2020, and the Las Vegas Aces of the WNBA, which began play in 2018.

Las Vegas is home to four minor league sports teams: the Las Vegas Aviators of Minor League Baseball, The Las Vegas Lights FC of the USL Championship, the league at the second of US men soccer league system, The Henderson Silver Knights of the American Hockey league of the NHL, and the Vegas Vipers of the XFL. The Las Vegas Lights and Vegas Vipers are currently the only teams playing in the city of Las Vegas, at the city-owned Cashman Field.

Source: www.wikipedia.com



Nevada Tax Advantages

Synopsis

Nevada has always been a popular state for businesses. One of the main reasons for that are low-cost startup, regulatory, licensing and annual fees, taxes and tax structure, privacy of business owners, and competitive utility rates for commercial operations.

The Tax Climate Index comparison to neighboring states is significant: California ranks 48th, Arizona 19th, Idaho 15th, Oregon 24th and Utah 8th.

Nevada Tax System:

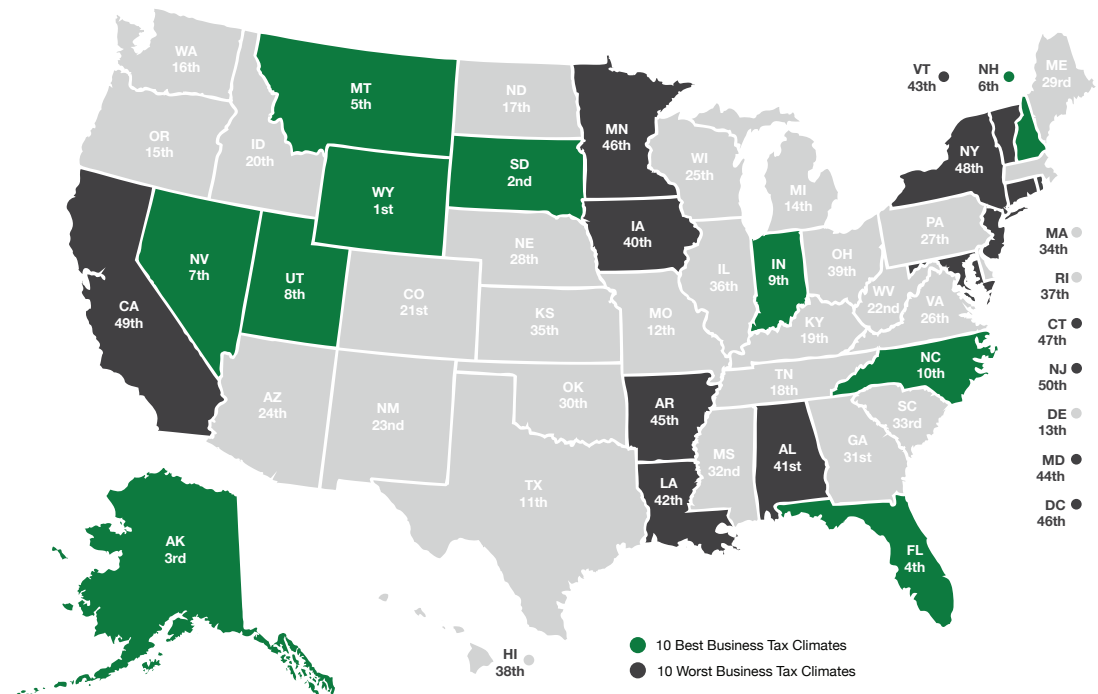
Nevada ranks as the 7th best state in the Tax Foundation's 2020 State Business Tax Climate Index, an independent ranking of states in five areas of taxation: corporate taxes; individual income taxes, sales taxes, unemployment insurance taxes, and taxes on property, including residential and commercial property.

Nevada takes it seriously with attracting new businesses because of taxes. There are plenty of taxes you must pay in other states, but not in Nevada. **Here are the main tax advantages:**

- No income tax
- No tax on pensions
- No tax on social security
- No tax on estate or inheritance
- Low property taxes
- No gross receipts tax
- No franchise tax
- No inventory tax
- No tax on issuance of corporate shares
- No tax on sale or transfer of shares

Source: Nevada Governor's Office of Economic Development;
www.TaxFoundation.org

2022 State Business Tax Climate Index



Road Transportation

Las Vegas and surrounding towns are less than one day's drive over arterial interstate highways to nearly 60 million consumers, as well as to the major U.S. deep water seaports serving the Pacific Rim.



Rail Transportation

Major Union Pacific and Southern Pacific rail connections in Las Vegas and Reno also, play an essential role in carrying the world's freight from the Pacific Coast to America's Heartland and beyond.



Air Transportation

Globally, Harry Reid International Airport in Las Vegas has been a Top 20 airport for more than five years, annually serving more than 40 million residents and handling more than 189 million pounds of cargo.

Southern Nevada Growth

200,000+

Number of jobs
added between
2011 and 2019.

7,500+

Number of new
businesses added
between 2011 and 2019.

85%

Milestone graduation
rate for Clark County
school district in 2019.



Education & Workforce Development

Southern Nevada's post-secondary education and training institutions have significantly increased their offerings.

Notably, the **University of Nevada, Las Vegas (UNLV)** doubled its research and development (R&D) performance over the last decade and reached R1 status in 2018, the highest classification for research universities. Additionally, the newly formed UNLV School of Medicine started class in 2017.

Nevada State College (NSC) more than double its degree awards since 2011, with especially strong growth in awards to racial and ethnic minorities, and in health professions that support a key regional target industry.

The College of Southern Nevada (CSN) was named as a Leader College of Distinction by national non-profit network Achieving the Dream in 2019 for its work on improving student outcomes and reducing student achievement gaps.

Innovation Ecosystem

In 2016, Las Vegas established an Innovation District to spur smart-city technology infrastructure and launched the International Innovation Center @ Vegas (IIC@V) incubator to support development of high priority emerging technologies.

The Las Vegas-based Nevada Institute for Autonomous Systems was designated in 2013 as one of six official unmanned aircraft systems (UAS) test sites in the United States, and the UNLV Tech Park has quickly emerged as a hub for regional innovation.

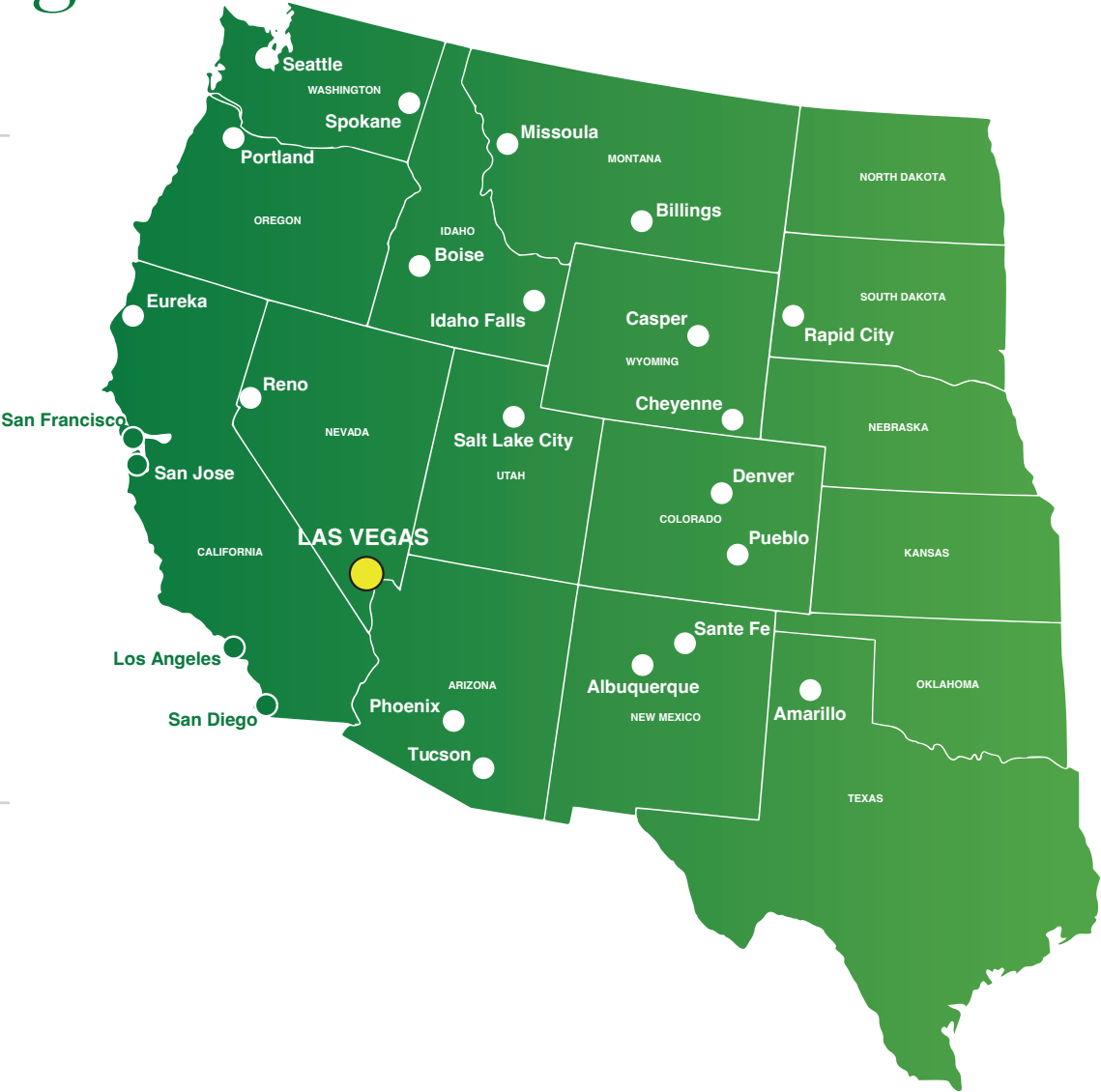
In July 2019, Google broke ground on a \$600 million data center, and in October 2019 Switch announced a partnership with UNLV to support sports science R&D. Switch also expanded its footprint in Southern Nevada to 4.6M SF of data center space.

The Las Vegas Convention and Visitors Authority (LVCVA) partnered with the Boring Company to build a high-speed electric autonomous people mover for the Las Vegas Convention Center.

Source: Las Vegas Global Economic Alliance (LVGEA)

Transit from Las Vegas

Destination	Est. Travel Time	Distance (Mi)
Los Angeles, CA	3 hrs, 55 min	265
Phoenix, AZ	4 hrs, 40 min	300
San Diego, CA	4 hrs, 45 min	327
Salt Lake City, UT	5 hrs, 50 min	424
Reno, NV	6 hrs, 55 min	452
San Francisco, CA	8 hrs, 15 min	565
Boise, ID	9 hrs, 30 min	634
Santa Fe, NM	9 hrs, 10 min	634
Denver, CO	10 hrs, 45 min	752
Cheyenne, WY	11 hrs, 50 min	837
Helena, MT	12 hrs, 55 min	907
Portland, OR	15 hrs, 45 min	982
Seattle, WA	16 hrs, 50 min	1,129



Shipping and Mailing Services



FedEx.



Freight Service Center
3 Mi

Freight Center
3 Mi

Customer Service Center
5 Mi

Distribution Center
10 Mi

Ship Center
8 Mi

Cargo Center
3 Mi

UPS Air Cargo
18 Mi

Air Cargo
20 Mi

--



Service you deserve. People you trust.



5960 South Jones Boulevard
Las Vegas, Nevada 89118

T 702.388.1800 | F 702.388.1010
www.mdlgroup.com