

PLYMOUTH PONDS II

MN
MPLS

3500 Holly Lane
Plymouth, MN



FOR LEASE

12,433 SF

Suite 50



LEASED BY





PROPERTY HIGHLIGHTS

- Convenient location near Plymouth City Center and retail development
- Quick access to Highway 55 and I-494
- Master-planned Business Park consisting of seven 24' clear buildings totaling more than 700,000 sf and one 18' clear, 83,000 sf showroom building

SPECIFICATIONS

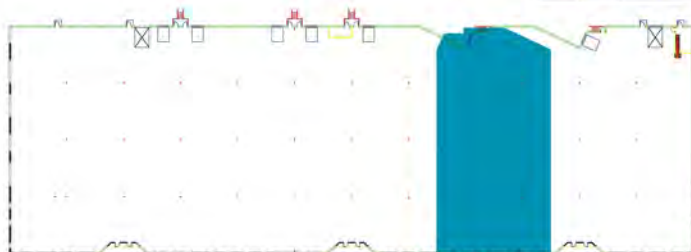
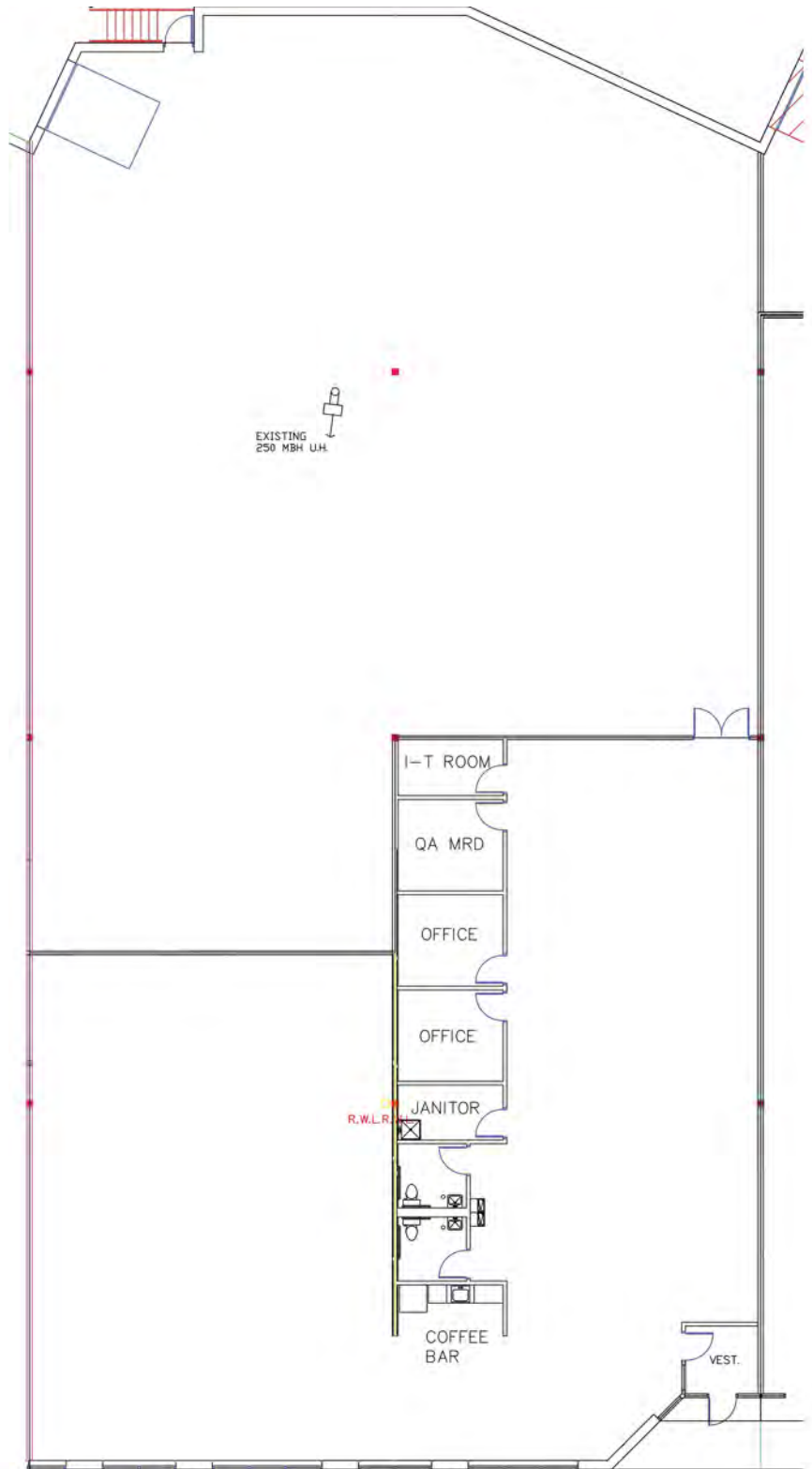
Building	75,688 SF Total
Available SF	3,127 SF Office 9,326 SF Warehouse 12,433 SF Total
Clear Height	24'
Lease Rates	Negotiable
Loading	1 Dock
2026 Tax/CAM	\$4.21 Tax \$2.17 CAM \$6.37 Total

AVAILABLE NOW

SUITE 50

3,127 SF Office
9,326 SF Whse
12,433 SF Total

1 dock



CONTACT INFORMATION

3500 Holly Lane
Plymouth, MN

Brent Masica

Executive Managing Director
952 893 8231

brent.masica@cushwake.com

Jason Meyer

Executive Director
952 820 8735

jason.meyer@cushwake.com

This document is for informational purposes only and does not constitute an offer or acceptance of a lease. Any lease agreement must be in writing and signed by the landlord. No representations or warranties are made except as expressly stated in a signed lease. Information is provided "as is" and may be subject to errors or change without notice.



LEASED BY

