

# LIBERTY INDUSTRIAL

GREAT OWNER USER OPPORTUNITY

FOR SALE OR LEASE



## PROPERTY DETAILS

3677 N. 2000 W., Ogden, UT 84044

*Lease Rate: \$0.95/SF NNN – Sale Price: \$5,300,000*

- 3,160–24,660 SF available
- 29,125 SF total
- 18' clear height
- Nine 12'x12' ground level doors
- Freeway visibility and close I-15 accessibility

- Ample parking
- Tenant improvement allowance available
- \$0.15/SF NNN fees

### NEARBY TENANT:



**BRANSON WOOD**  
bwood@newmarkmw.com  
direct 801.510.5207  
[View Profile](#)

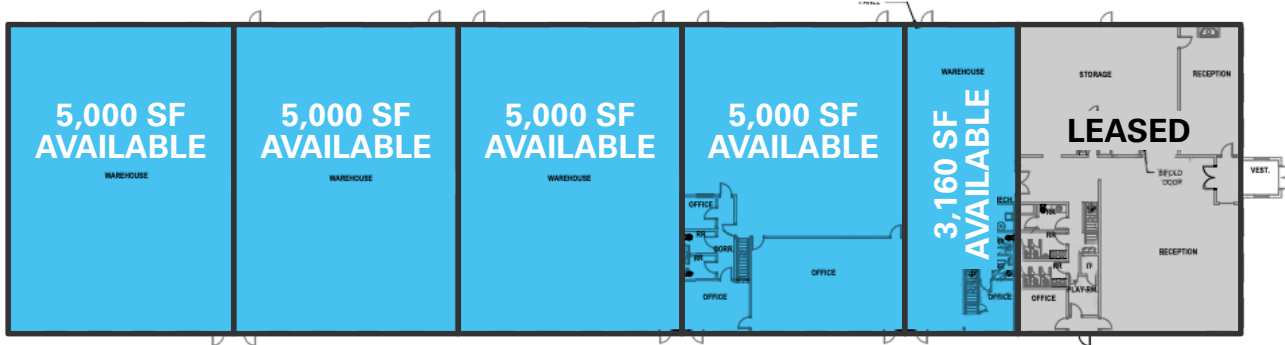
**BRAXTON WILLIE, CCIM**  
bwillie@newmarkmw.com  
direct 801.803.3334  
[View Profile](#)

**CHRIS FALK, CCIM, SIOR**  
cfalk@newmarkmw.com  
direct 801.499.6514  
[View Profile](#)

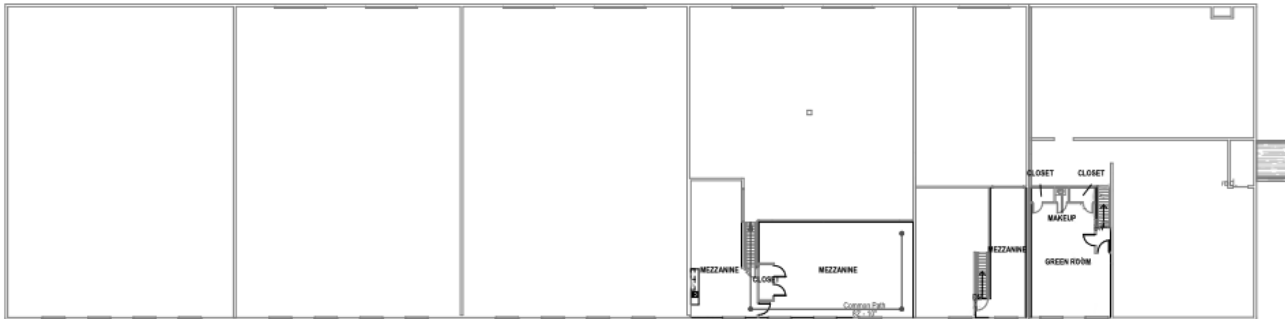
**FULL SERVICE  
COMMERCIAL REAL ESTATE**  
1410 S University Park Blvd, Ste 120  
Clearfield, Utah 84015  
Office 801.578.5580  
[www.newmarkmw.com](http://www.newmarkmw.com)

# LIBERTY INDUSTRIAL

## MAIN LEVEL



## SECOND LEVEL



## FLOOR PLAN



**BRANSON WOOD**  
 bwood@newmarkmw.com  
 direct 801.510.5207  
[View Profile](#)

**BRAXTON WILLIE, CCIM**  
 bwillie@newmarkmw.com  
 direct 801.803.3334  
[View Profile](#)

**CHRIS FALK, CCIM, SIOR**  
 cfalk@newmarkmw.com  
 direct 801.499.6514  
[View Profile](#)

**FULL SERVICE  
 COMMERCIAL REAL ESTATE**  
 1410 S University Park Blvd, Ste 120  
 Clearfield, Utah 84015  
 Office 801.578.5580  
[www.newmarkmw.com](http://www.newmarkmw.com)





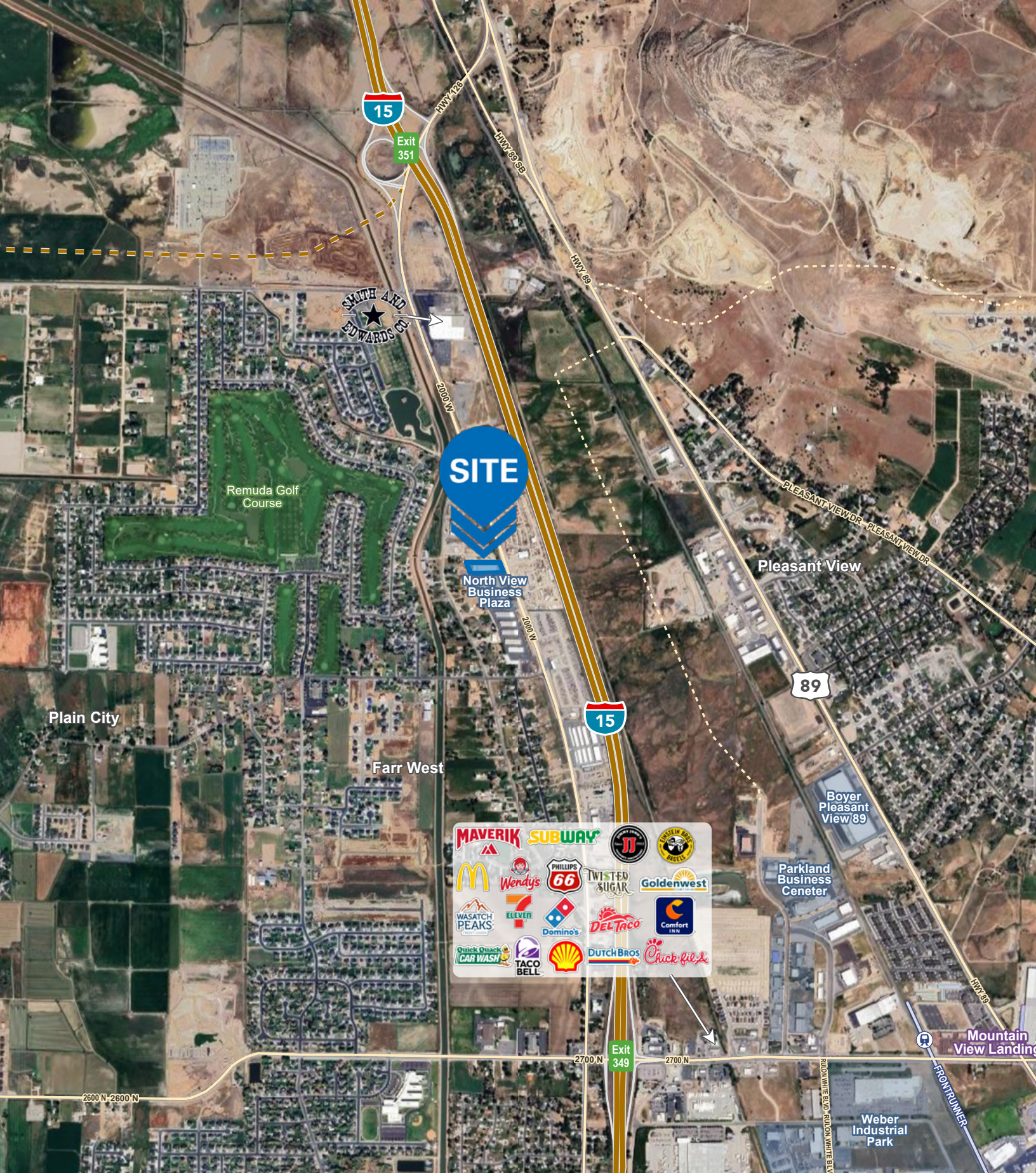
**BRANSON WOOD**  
bwood@newmarkmw.com  
direct 801.510.5207  
[View Profile](#)

**BRAXTON WILLIE, CCIM**  
bwillie@newmarkmw.com  
direct 801.803.3334  
[View Profile](#)

**CHRIS FALK, CCIM, SIOR**  
cfalk@newmarkmw.com  
direct 801.499.6514  
[View Profile](#)

**FULL SERVICE  
COMMERCIAL REAL ESTATE**  
1410 S University Park Blvd, Ste 120  
Clearfield, Utah 84015  
Office 801.578.5580  
[www.newmarkmw.com](http://www.newmarkmw.com)





**BRANSON WOOD**  
 bwood@newmarkmw.com  
 direct 801.510.5207  
[View Profile](#)

**BRAXTON WILLIE, CCIM**  
 bwillie@newmarkmw.com  
 direct 801.803.3334  
[View Profile](#)

**CHRIS FALK, CCIM, SIOR**  
 cfalk@newmarkmw.com  
 direct 801.499.6514  
[View Profile](#)

**FULL SERVICE  
 COMMERCIAL REAL ESTATE**  
 1410 S University Park Blvd, Ste 120  
 Clearfield, Utah 84015  
 Office 801.578.5580  
[www.newmarkmw.com](http://www.newmarkmw.com)