



456 Washington Ave
Bridgeville, PA 15017

Bridgeville Trust Building

Partnership. Performance.

- Asking Price: \$950,000
- Asking Rent: 1st Floor: \$16/SF
2nd Floor: \$15/SF
- ± 12,000 SF Two Story + Basement
(Approx. 50 x 126)
- Remodeled in 1994
- New Roof in 2015
- Approx. 20 Parking Spaces
- Approx. Quarter Acre Lot
- Real Estate Taxes: \$ ± 21,000
- 1st Floor Great for Restaurant, Retail, Bank
- Parcel ID's: 255-J-225
255-J-218
- Bank Drive Thru Lanes
- Commercial Zoning
- Located on the Corner of Station & Washington
- Signalized Intersection
- On Site Parking



James Kelly
Principal and Senior Vice President
D 412.944.2133
C 412.720.4012
james.kelly@avisonyoung.com

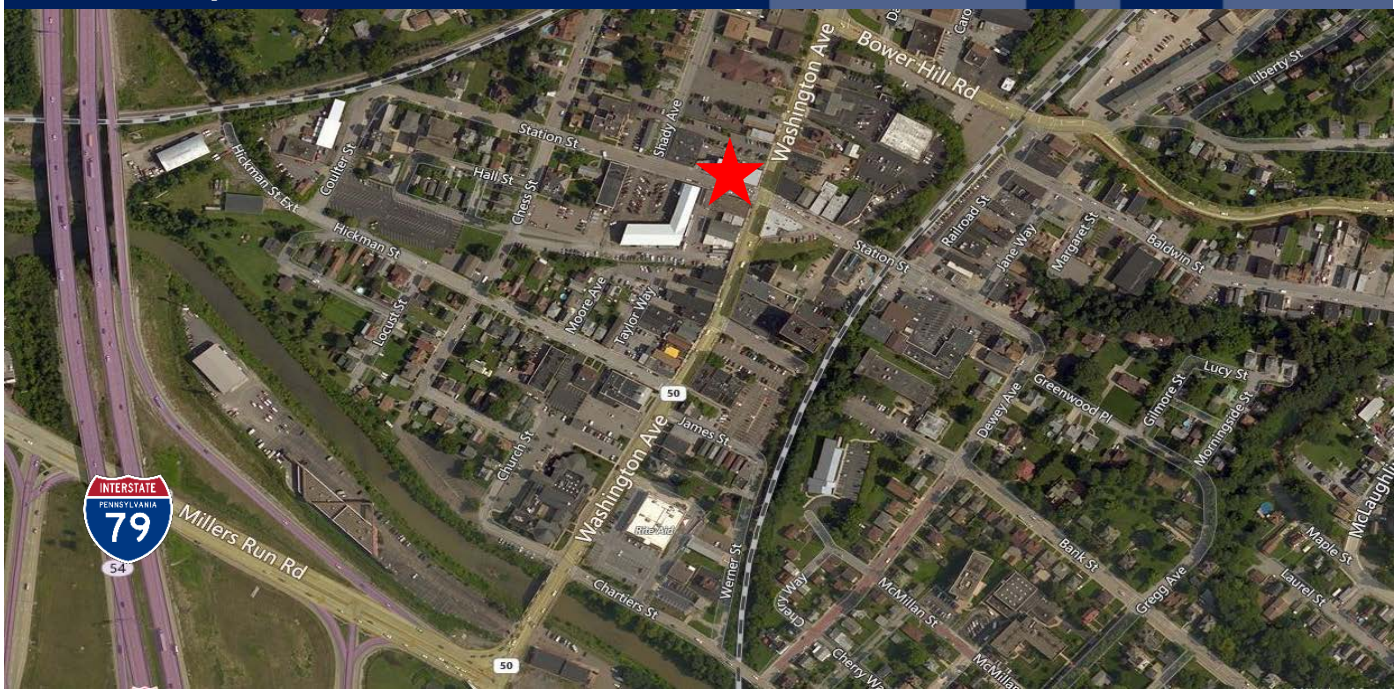
4 PPG Place
Suite 300
Pittsburgh, PA 15222



456 Washington Ave
Bridgeville, PA 15017

Bridgeville Trust Building

Partnership. Performance.



James Kelly
Principal and Senior Vice President
D 412.944.2133
C 412.720.4012
james.kelly@avisonyoung.com

4 PPG Place
Suite 300
Pittsburgh, PA 15222

