

FORMER CHURCH

2623 54th Street South, Gulfport, FL 33707



PROPERTY DESCRIPTION

Unique opportunity for After School Programs, Church, Daycare, Performing Arts, Theater Groups
Formerly a worship hall, now equipped with a stage. Mostly open concept with backstage rooms and separate practice area.

PROPERTY HIGHLIGHTS

- Large Auditorium with High Ceilings
- Backstage Areas
- New Roof

OFFERING SUMMARY

Lease Rate:	\$3,300.00 per month (Shared Expenses)
Number of Units:	1
Available SF:	3,600 SF
Lot Size:	31,200 SF
Building Size:	3,600 SF

DEMOGRAPHICS	0.3 MILES	0.5 MILES	1 MILE
Total Households	453	2,203	5,624
Total Population	764	3,626	10,539
Average HH Income	\$81,069	\$76,957	\$82,961

We obtained the information above from sources we believe to be reliable. However, we have not verified its accuracy and make no guarantee, warranty or representation about it. It is submitted subject to the possibility of errors, omissions, change of price, rental or other conditions, prior sale, lease or financing, or withdrawal without notice. We include projections, opinions, assumptions or estimates for example only, and they may not represent current or future performance of the property. You and your tax and legal advisors should conduct your own investigation of the property and transaction.

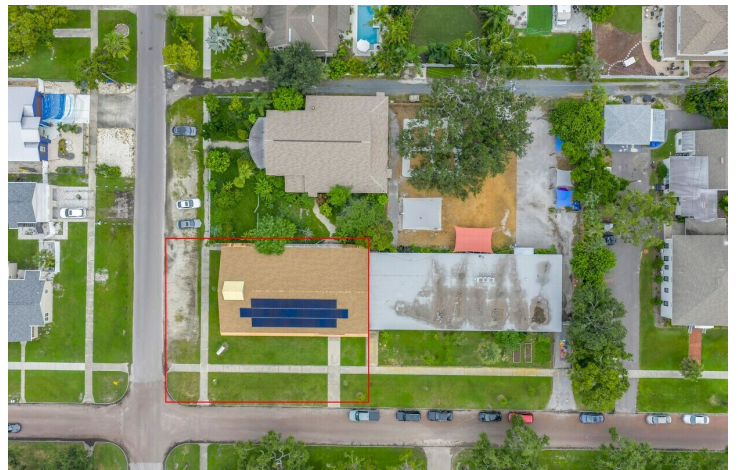
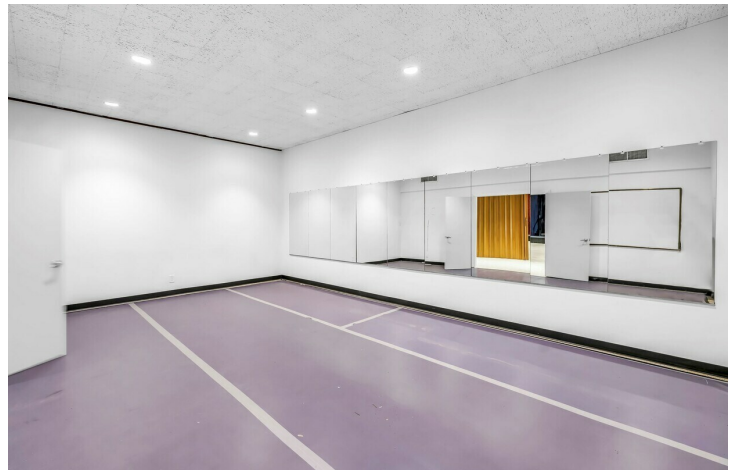
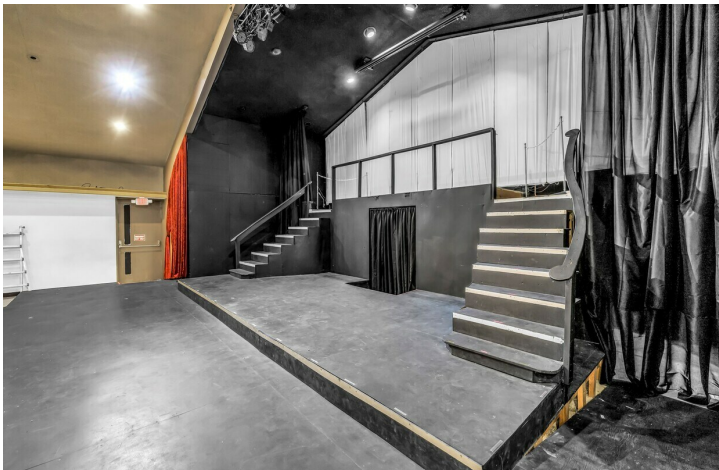
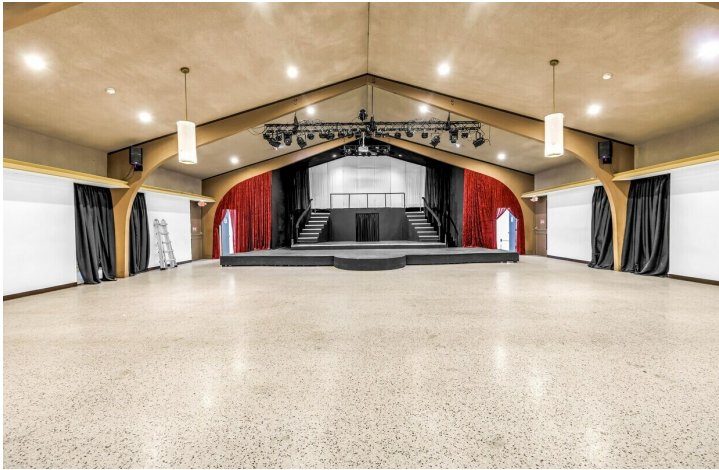
HAL HOLDER
Agent
O: 727.241.1307
halholder@gmail.com

KW COMMERCIAL
360 Central Avenue, Suite 600
St. Petersburg, FL 33701

AUDITORIUM FOR LEASE

FORMER CHURCH

2623 54th Street South, Gulfport, FL 33707



We obtained the information above from sources we believe to be reliable. However, we have not verified its accuracy and make no guarantee, warranty or representation about it. It is submitted subject to the possibility of errors, omissions, change of price, rental or other conditions, prior sale, lease or financing, or withdrawal without notice. We include projections, opinions, assumptions or estimates for example only, and they may not represent current or future performance of the property. You and your tax and legal advisors should conduct your own investigation of the property and transaction.

HAL HOLDER
Agent
O: 727.241.1307
halholder@gmail.com

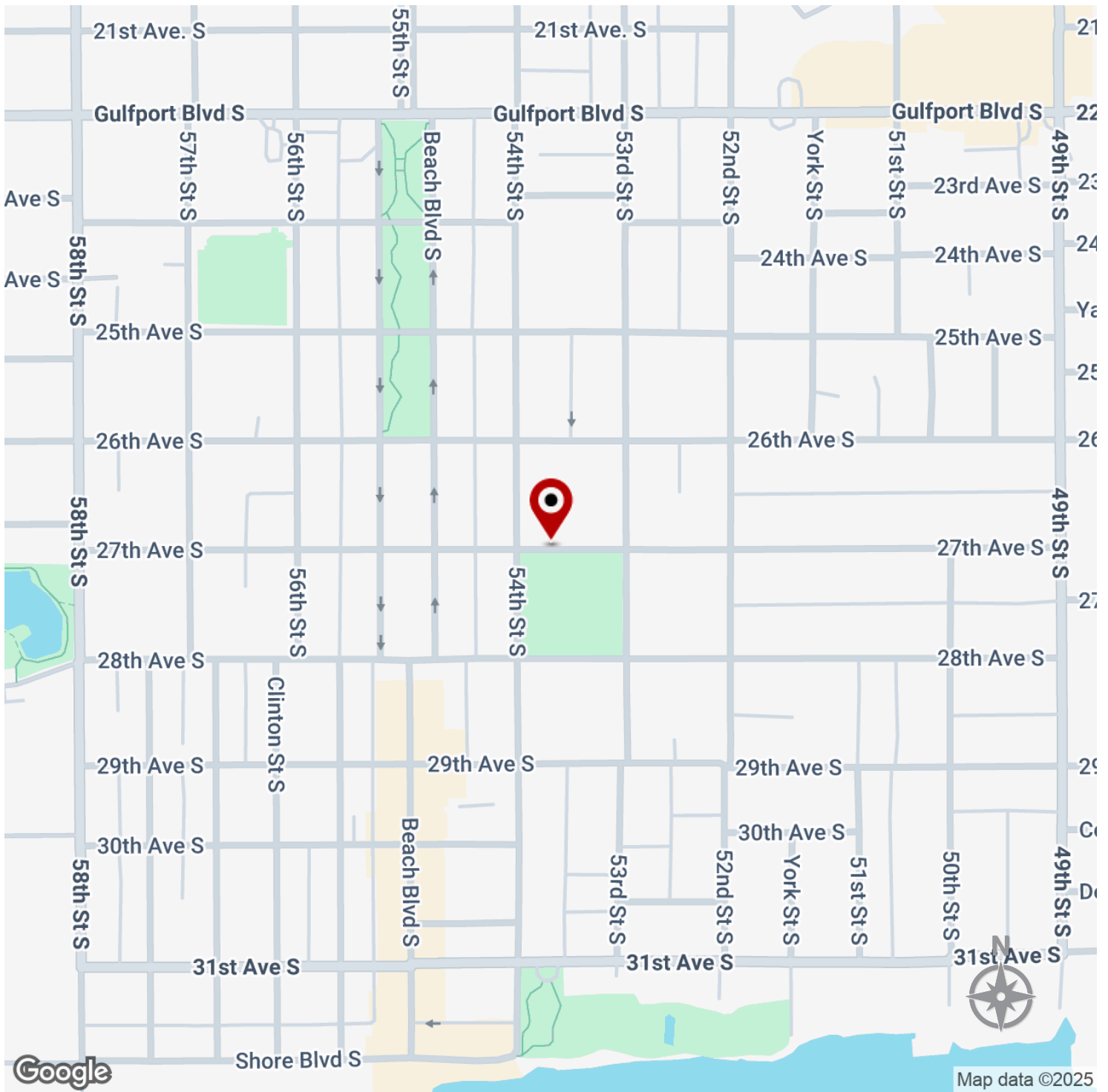
KW COMMERCIAL
360 Central Avenue, Suite 600
St. Petersburg, FL 33701

Each Office Independently Owned and Operated



FORMER CHURCH

2623 54th Street South, Gulfport, FL 33707



We obtained the information above from sources we believe to be reliable. However, we have not verified its accuracy and make no guarantee, warranty or representation about it. It is submitted subject to the possibility of errors, omissions, change of price, rental or other conditions, prior sale, lease or financing, or withdrawal without notice. We include projections, opinions, assumptions or estimates for example only, and they may not represent current or future performance of the property. You and your tax and legal advisors should conduct your own investigation of the property and transaction.

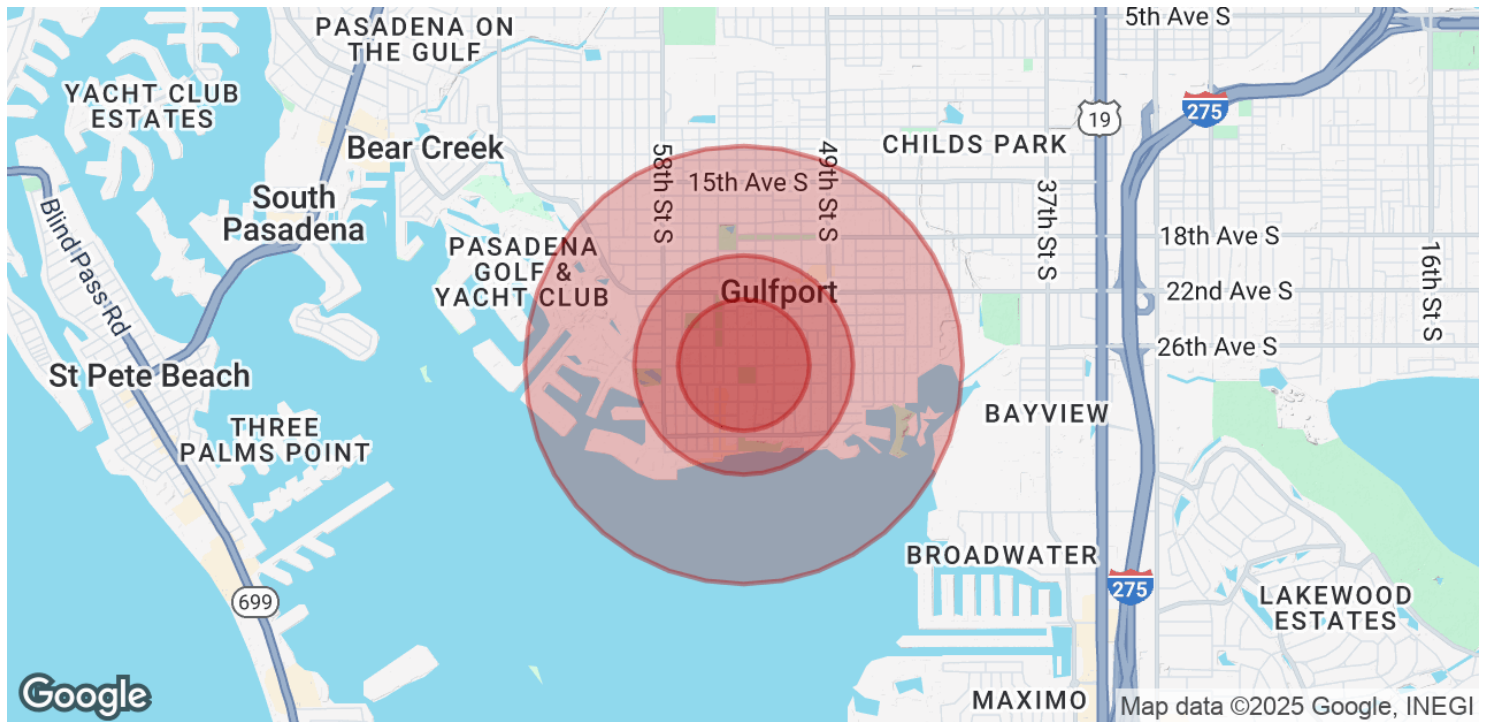
HAL HOLDER
Agent
O: 727.241.1307
halholder@gmail.com

KW COMMERCIAL
360 Central Avenue, Suite 600
St. Petersburg, FL 33701



FORMER CHURCH

2623 54th Street South, Gulfport, FL 33707



POPULATION	0.3 MILES	0.5 MILES	1 MILE
Total Population	764	3,626	10,539
Average Age	54	57	52
Average Age (Male)	53	56	51
Average Age (Female)	55	57	53

HOUSEHOLDS & INCOME	0.3 MILES	0.5 MILES	1 MILE
Total Households	453	2,203	5,624
# of Persons per HH	1.7	1.6	1.9
Average HH Income	\$81,069	\$76,957	\$82,961
Average House Value	\$490,113	\$444,048	\$428,511

Demographics data derived from AlphaMap

We obtained the information above from sources we believe to be reliable. However, we have not verified its accuracy and make no guarantee, warranty or representation about it. It is submitted subject to the possibility of errors, omissions, change of price, rental or other conditions, prior sale, lease or financing, or withdrawal without notice. We include projections, opinions, assumptions or estimates for example only, and they may not represent current or future performance of the property. You and your tax and legal advisors should conduct your own investigation of the property and transaction.

HAL HOLDER
 Agent
 O: 727.241.1307
 halholder@gmail.com

KW COMMERCIAL
 360 Central Avenue, Suite 600
 St. Petersburg, FL 33701