

41714 HAGGERTY CIRCLE
CANTON, MICHIGAN

HI-TECH FOR LEASE
33,505 Square Feet Available



**SIGNATURE
ASSOCIATES**
KNOW SIGNATURE | KNOW RESULTS

HAGGERTY II CORPORATE PARK



PROPERTY FEATURES

- 33,505 square feet available
- 5,316 square feet office
- 20' clear height
- (1) 12'x14' grade level door
- (4) truckwells
- Corporate image hi-tech/industrial facility located in Haggerty II Corporate Park, a premier business park
- Built in 2000
- Lease Rate: \$9.95/sq.ft. NNN



For more information, please contact:

BRAD VIERGEVER
(248) 799 3146
bviergever@signatureassociates.com

PAUL HOGE
(248) 948 0103
paulhoge@signatureassociates.com

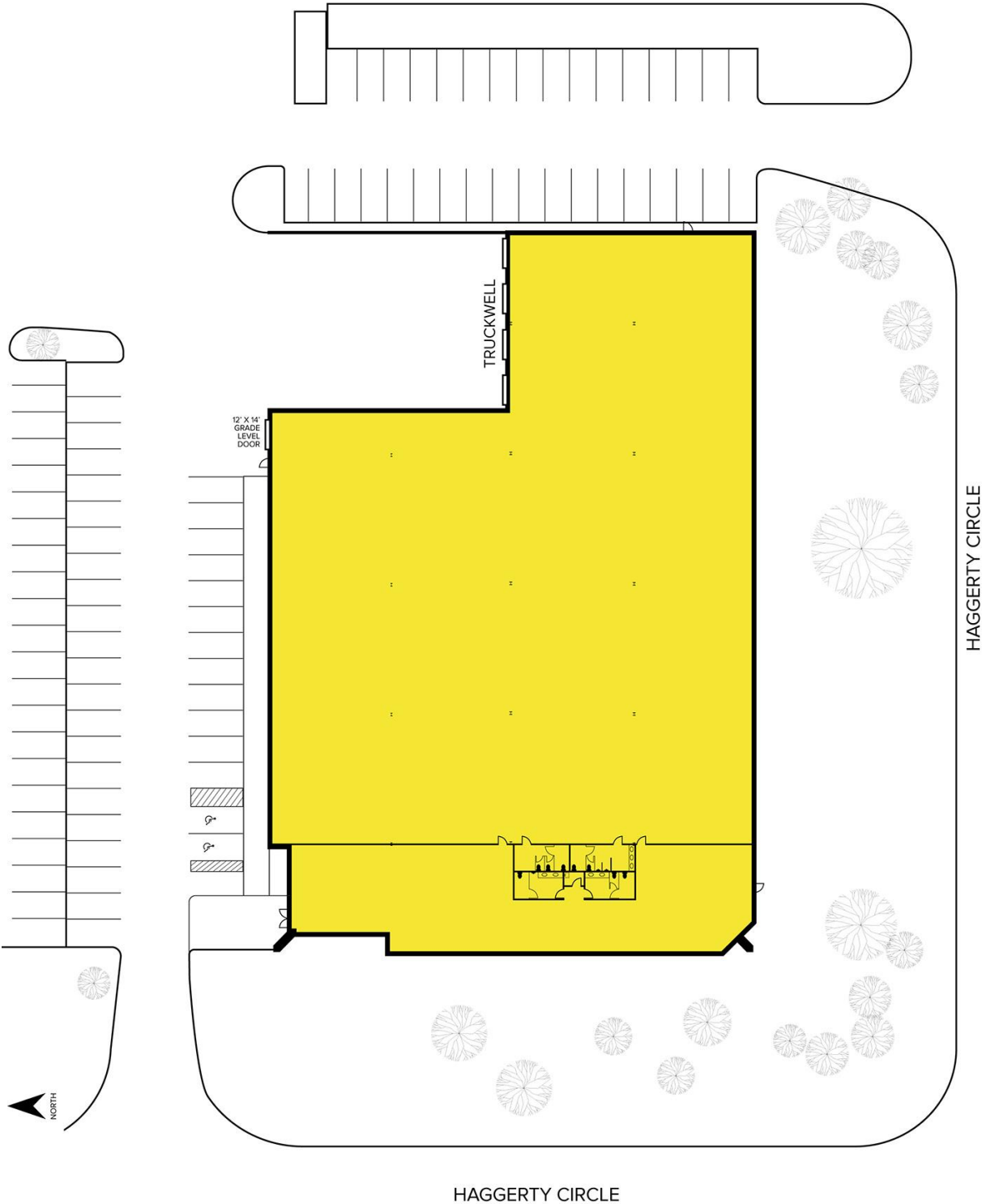
SIGNATURE ASSOCIATES
One Towne Square, Suite 1200
Southfield, MI 48076
www.signatureassociates.com

41714 Haggerty Circle – Canton, Michigan

Hi-Tech For Lease

33,505
Square Feet
AVAILABLE

Site Plan



For more information, please contact:

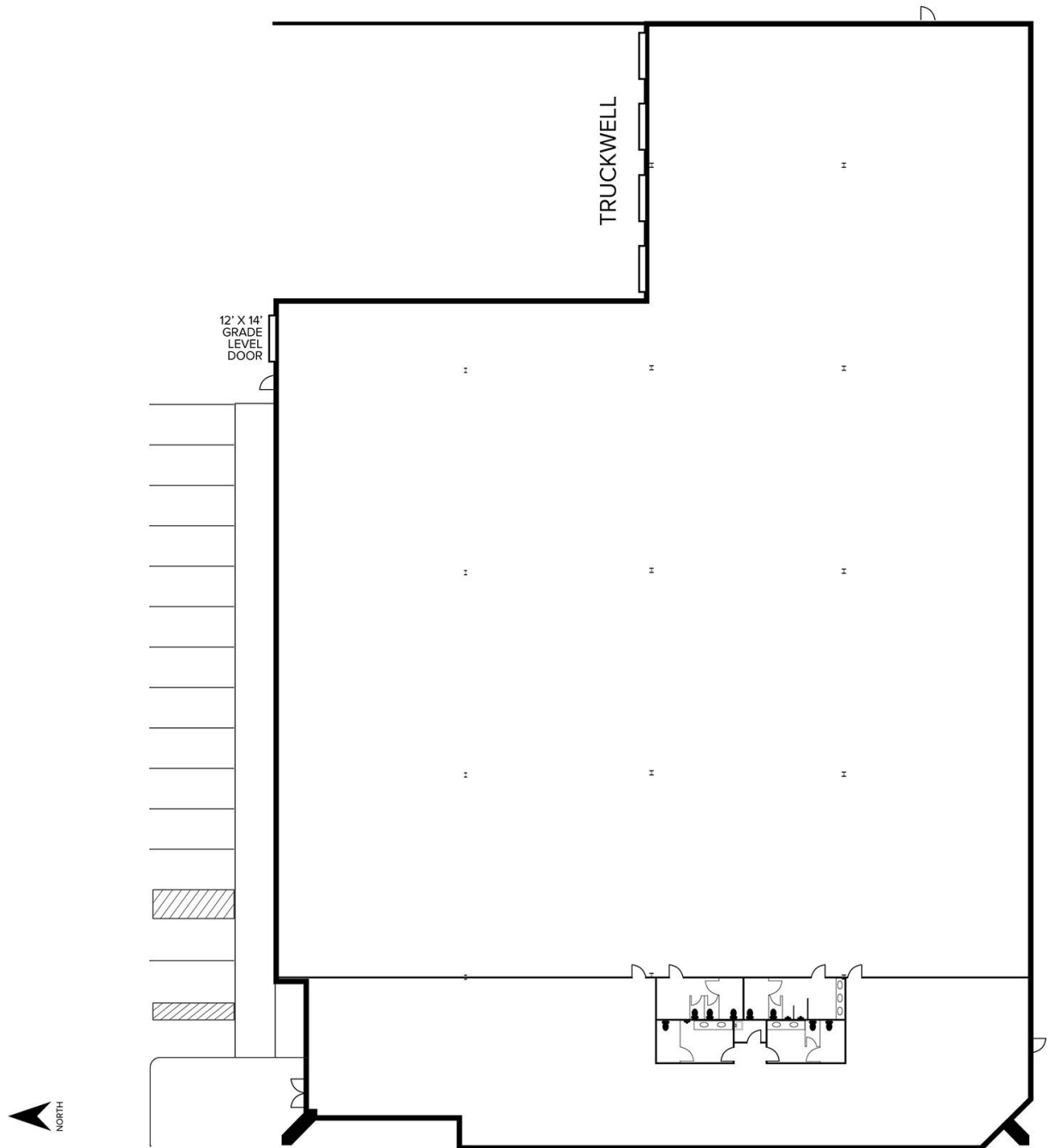
BRAD VIERGEVER
(248) 799 3146
bviergever@signatureassociates.com

PAUL HOGE
(248) 948 0103
paulhoge@signatureassociates.com

SIGNATURE ASSOCIATES
One Towne Square, Suite 1200
Southfield, MI 48076
www.signatureassociates.com

Information is subject to verification and no liability for errors or omissions is assumed. Price is subject to change and listing withdrawal.

Floor Plan



For more information, please contact:

BRAD VIERGEVER
(248) 799 3146
bviergever@signatureassociates.com

PAUL HOGE
(248) 948 0103
paulhoge@signatureassociates.com

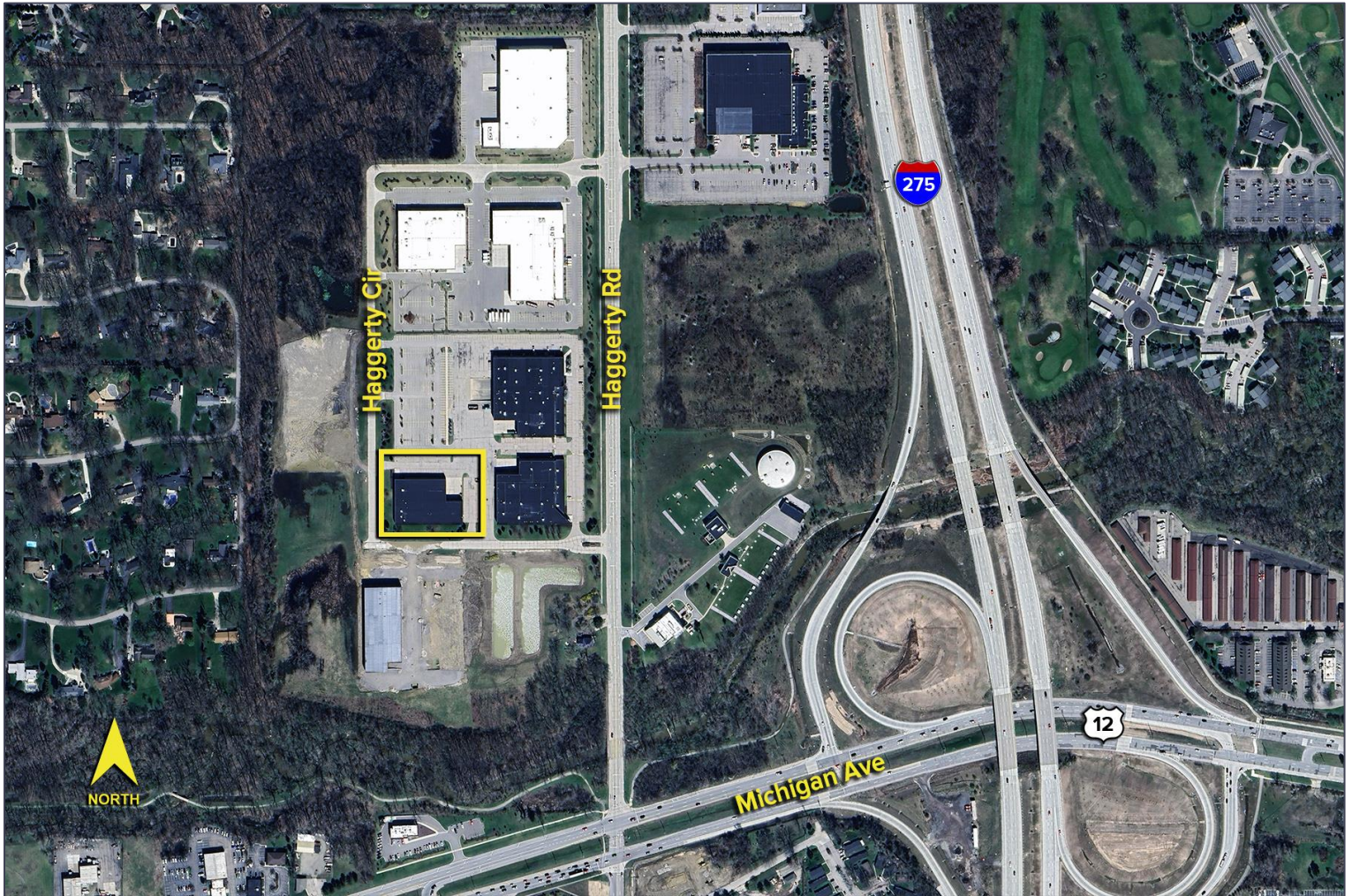
SIGNATURE ASSOCIATES
One Towne Square, Suite 1200
Southfield, MI 48076
www.signatureassociates.com

41714 Haggerty Circle – Canton, Michigan

Hi-Tech For Lease

33,505
Square Feet
AVAILABLE

Aerial



For more information, please contact:

BRAD VIERGEVER

(248) 799 3146

bviergever@signatureassociates.com

PAUL HOGE

(248) 948 0103

paulhoge@signatureassociates.com

SIGNATURE ASSOCIATES

One Towne Square, Suite 1200

Southfield, MI 48076

www.signatureassociates.com