

Village Square Shopping Center Retail For Lease

535-655 E. S BOULDER RD | LOUISVILLE, CO

Suite 539: 1,200 SF

Suite 551: 1,203 SF

Suite 599-605: 2,393 SF

Price: \$22 - \$26 NNN

Available: Now



RIGHT PLACE. RIGHT CROWD.

You know the kind of place... the one people swing by "real quick" and somehow stay awhile. That's Village Square. A steady mix of regulars, weekend wanderers, and loyal locals who actually support the businesses they frequent. Add your name to the mix, and you're not starting from scratch; you're stepping into something already in motion. Take advantage of big traffic counts, visibility, and motivated ownership.

PROPERTY HIGHLIGHTS:

- Recently remodeled shopping center in the heart of Louisville with abundant parking
- Strong tenant mix including MudRocks Sports Bar, Shopey's Pizza, & Dollar Tree
- Visible from S Boulder Road with 21,362 daily traffic count
- High-income resident base with strong support for local operators.
- Proactive and tenant-centric ownership group



SUITE 539



[CLICK HERE](#)
for 539 virtual tour

[CLICK HERE](#)
for 551 virtual tour

[CLICK HERE](#)
for 599-605 virtual tour



SUITE 551





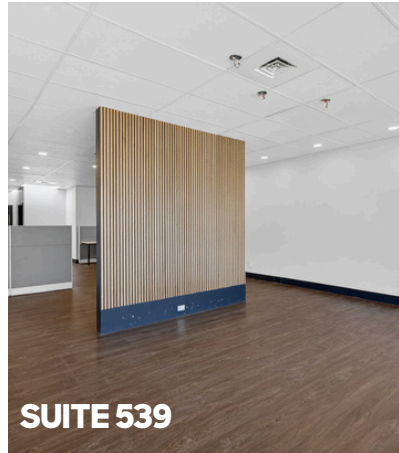
SUITE 539



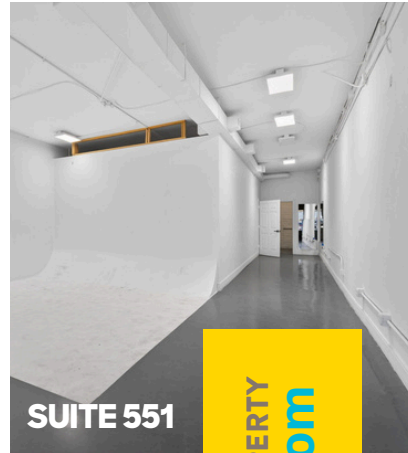
SUITE 551



SUITE 539



SUITE 539



SUITE 551



SUITE 599-601



SUITE 539

LEARN MORE ABOUT THIS PROPERTY
MarketRealEstate.com



ANNIE LARNER

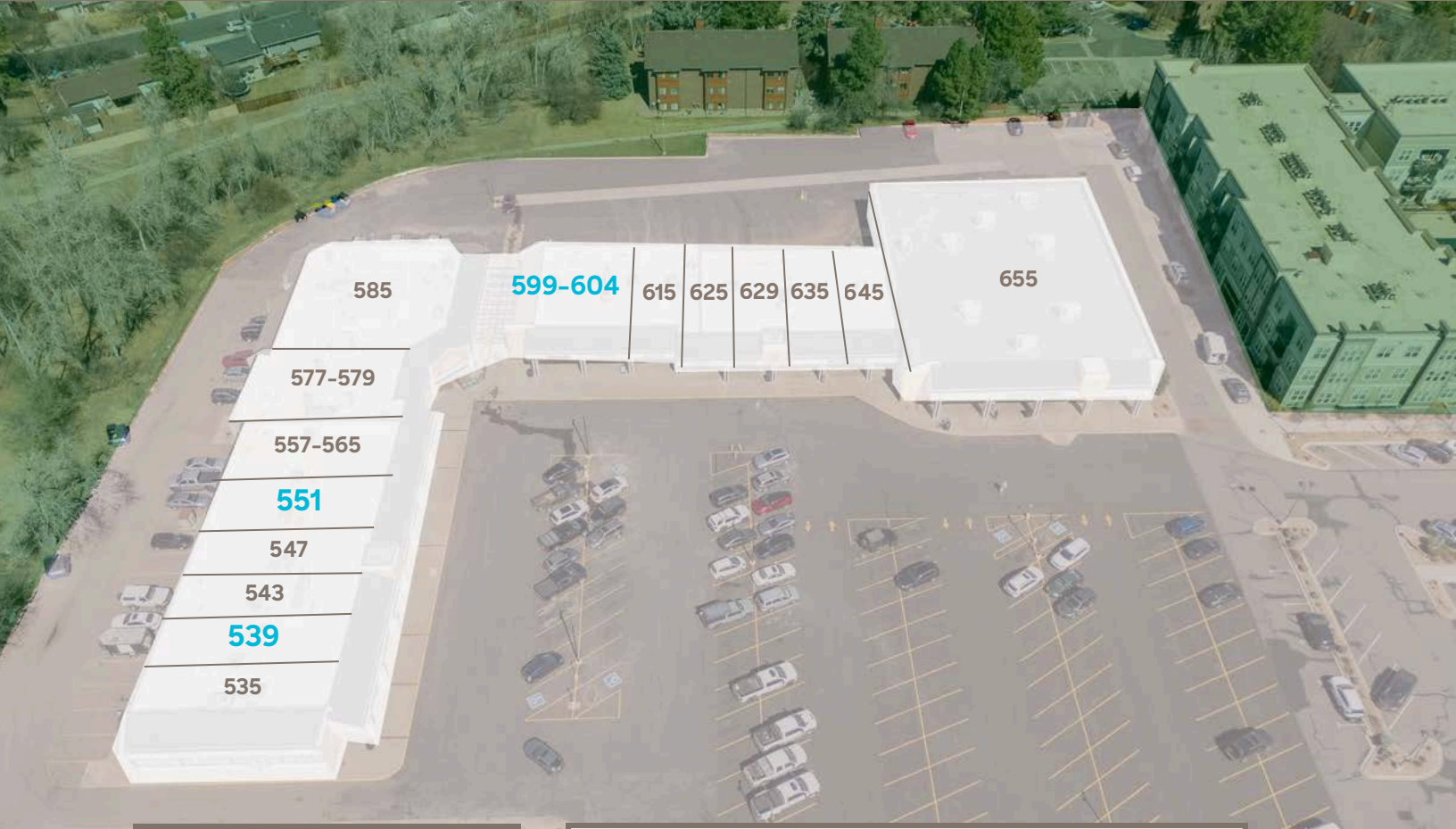
303 444 1344

Annie@MarketRealEstate.com

NATE LITSEY

303 444 4024

Nate@MarketRealEstate.com



AVAILABLE SUITES

SUITE # | GLA (SF)

539 | 1,200 SF
 551 | 1,203 SF
 599-604 | 2,393 SF

CURRENT TENANTS

SUITE # | TENANT | GLA (SF)

535 | LOUISVILLE COMMUNITY YOGA | 1,205 SF
 543 | ORGANIC ROOTS CATERING | 1,200 SF
 547 | TAZ VAPOR | 1,200 SF
 557-565 | INKSMITH TATTOO & PIERCING | 2,400 SF
 577-579 | SHOPEY'S PIZZA | 2,400 SF
 585 | MUDROCK'S TAP & TAVERN | 6,008 SF
 615 | WATERMILL PETWASH | 1,200 SF
 625 | COMFORT CLEANERS | 1,200 SF
 629 | CAROLINA'S ALTERATIONS | 1,200 SF
 635 | LAUNDRYVILLE | 1,200 SF
 645 | VILLAGE SQUARE LIQUOR | 2,580 SF
 655 | DOLLAR TREE | 13,622 SF

LEARN MORE ABOUT THIS PROPERTY
MarketRealEstate.com

ANNIE LARNER

303 444 1344

Annie@MarketRealEstate.com

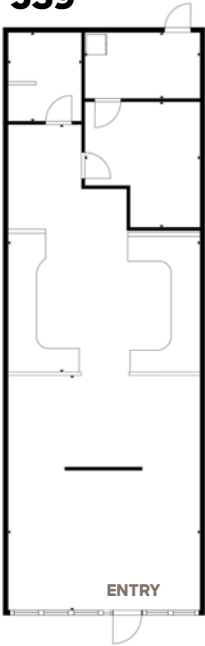
NATE LITSEY

303 444 4024

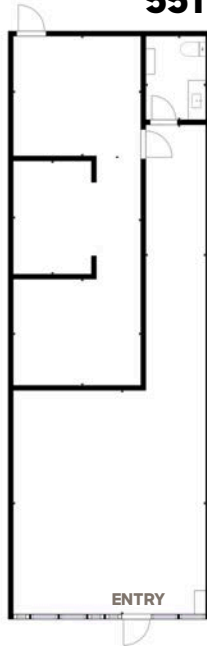
Nate@MarketRealEstate.com



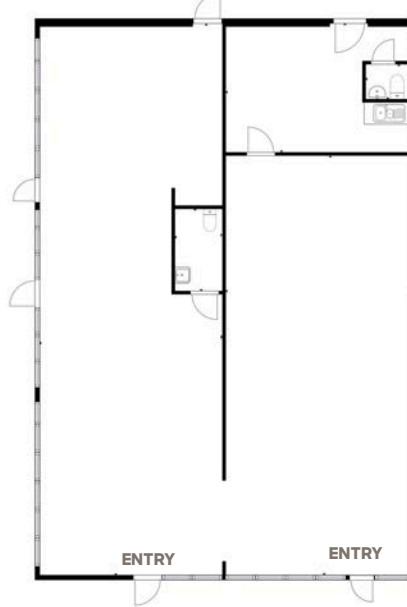
539



551



599-605



[CLICK HERE](#)
for 599-605 virtual tour

[CLICK HERE](#)
for 539 virtual tour

[CLICK HERE](#)
for 551 virtual tour



LEARN MORE ABOUT THIS PROPERTY
MarketRealEstate.com

ANNIE LARNER

303 444 1344

Annie@MarketRealEstate.com

NATE LITSEY

303 444 4024

Nate@MarketRealEstate.com

