

**FOR LEASE**  
Office/Medical/Retail

**1619 N Whitley Drive**  
FRUITLAND, ID 83619

**STARK**  
ACCELERATORS  
COMMERCIAL REAL ESTATE

## NEWLY BUILT-OUT OFFICE/MEDICAL/RETAIL UNITS FOR LEASE



### PROPERTY DESCRIPTION

- Newly built out office/retail/medical units with private restroom in each unit
- Unit B is 1,440± SF & Unit C is 723± SF—Units can be combined to 2,163± SF
- Available soon
- Traffic count of 20,000 Vehicles per day

### PROPERTY HIGHLIGHTS

- Centrally located between Fruitland, Payette and Ontario
- 1/4 mile from St. Alphonsus Health Plaza, 1/2 mile from Walmart, and 1 mile from I-84
- Anchor Tenant is a Kids Dentistry & Orthodontics which sees 600+ patients monthly
- Excellent Signage Opportunity

### OFFERING SUMMARY

UNIT SF

APN

723± SF to 2,163± SF

F3540003000M

PRICE/SF

LEASE TYPE

\$21/SF/Year

Full Service (Minus Janitorial)

ZONING

TOTAL BUILDING SF

C-Commercial General

6,423± SF



**JOHN OLSEN**



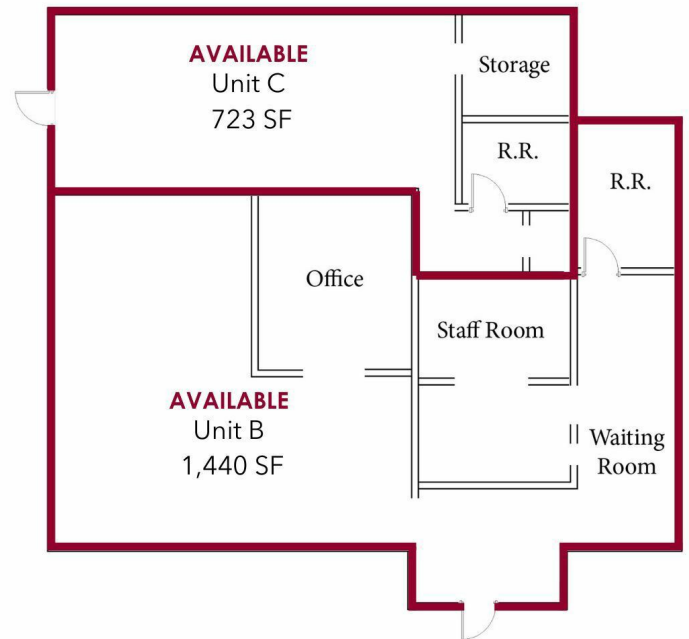
Office: 208.722.2400  
Cell: 208.870.0405

ID LICENSE # : SP44227

**FOR LEASE**  
Office/Medical/Retail

**1619 N Whitley Drive**  
FRUITLAND, ID 83619

**NEWLY  
BUILT-OUT UNITS  
FOR LEASE**



**JOHN OLSEN**  
ID LICENSE # : SP44227



**Office: 208.722.2400**  
**Cell: 208.870.0405**

**STARK**  
**ACCELERATORS**  
COMMERCIAL REAL ESTATE



Office: 208-722-2400



[WWW.STARK.REALESTATE](http://WWW.STARK.REALESTATE)



3100 N Lake Harbor Ln, Suite 166, Boise, Idaho 83703

Although all information is obtained from sources deemed reliable, we make no guarantee, warranty, expressed or implied, or representation as to the accuracy of content or other conditions, prior sales, leasing, financing, or withdrawals without notice.