



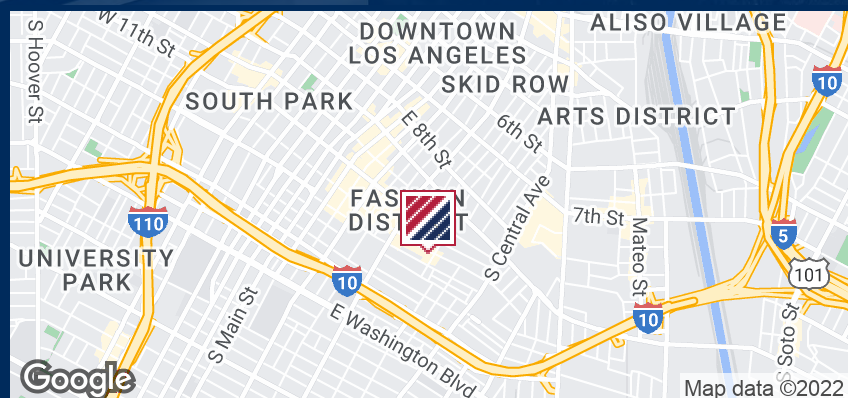
WELL-APPOINTED & HIGH-FINISH SHOWROOM/OFFICE

SHOWROOM/OFFICE
FOR LEASE

800 EAST 12TH STREET
LOS ANGELES | CA

PROPERTY FEATURES:

- 4,170 SF Available
- 2 Available Parking Spaces
- 8'-20' Clear Height
- 1 DH/GL Door
- Located in LA Fashion District



FOR MORE INFORMATION PLEASE CONTACT:

SEHYUNG KIM

VICE PRESIDENT

P: 213.290.3599

sehyung.kim@daumcommercial.com

CADRE #01327276

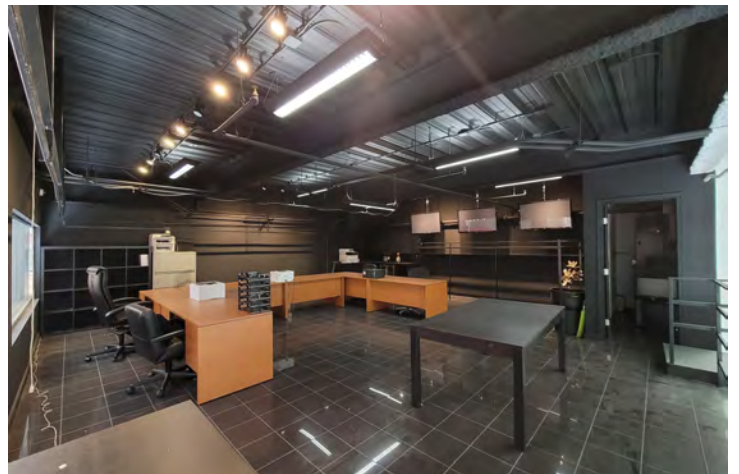
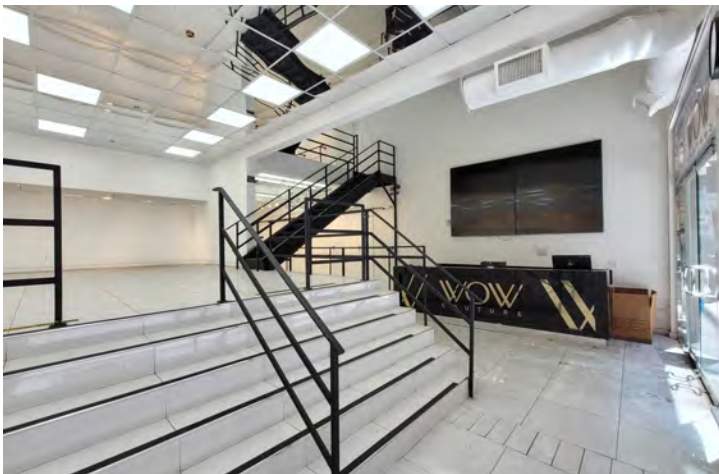
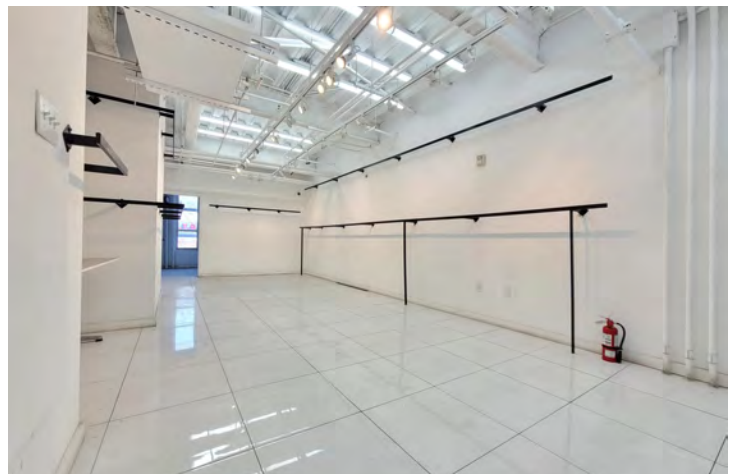
Although all information is furnished regarding for sale, rental or financing is from sources deemed reliable, such information has not been verified and no express representation is made nor is any to be implied as to the accuracy thereof, and it is submitted subject to errors, omissions, changes of price, rental or other conditions, prior sale, lease or financing, or withdrawal without notice.

DAUM
COMMERCIAL REAL ESTATE SERVICES

800

EAST 12TH STREET
LOS ANGELES | CA

FOR LEASE
SHOWROOM/OFFICE



FOR MORE INFORMATION PLEASE CONTACT:

SEHYUNG KIM

VICE PRESIDENT

P: 213.290.3599

sehyung.kim@daumcommercial.com

CABRE #01327276

Although all information is furnished regarding for sale, rental or financing is from sources deemed reliable, such information has not been verified and no express representation is made nor is any to be implied as to the accuracy thereof, and it is submitted subject to errors, omissions, changes of price, rental or other conditions, prior sale, lease or financing, or withdrawal without notice.

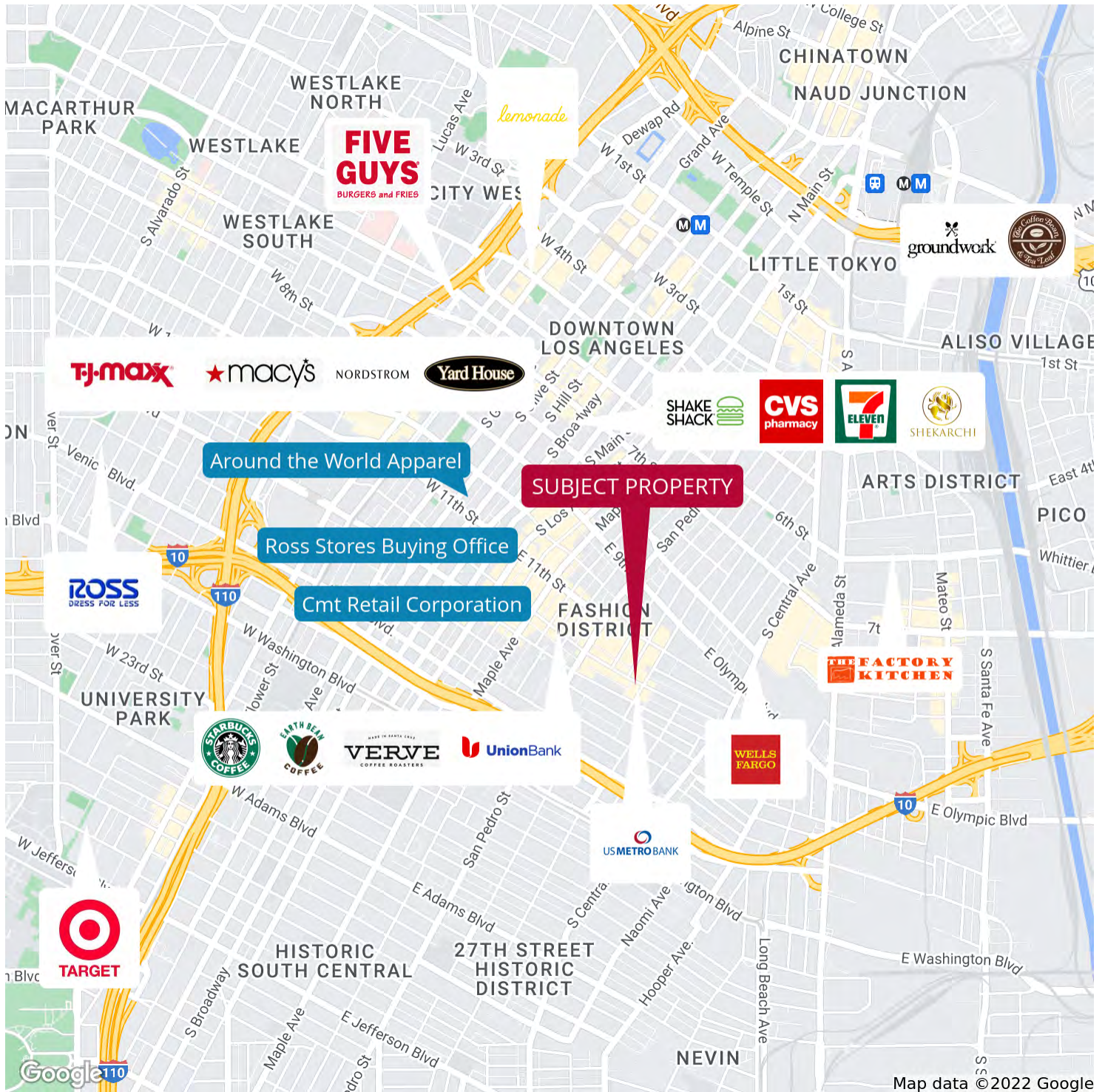
DAUM
COMMERCIAL REAL ESTATE SERVICES

800

EAST 12TH STREET
LOS ANGELES | CA

FOR LEASE

SHOWROOM/OFFICE



FOR MORE INFORMATION PLEASE CONTACT:

SEHYUNG KIM

VICE PRESIDENT

P: 213.290.3599

sehyung.kim@daumcommercial.com

CABRE #01327276

Although all information is furnished regarding for sale, rental or financing is from sources deemed reliable, such information has not been verified and no express representation is made nor is any to be implied as to the accuracy thereof, and it is submitted subject to errors, omissions, changes of price, rental or other conditions, prior sale, lease or financing, or withdrawal without notice.

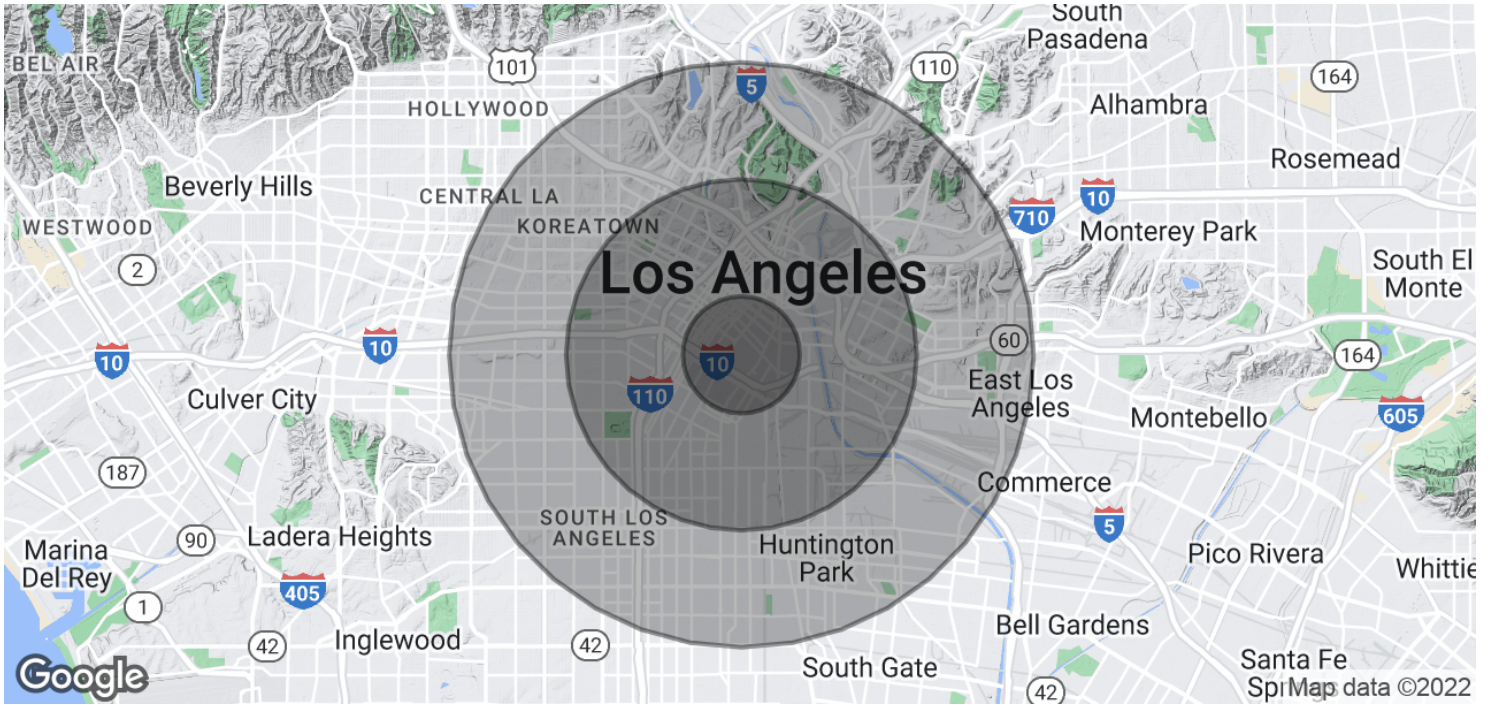
DAUM
COMMERCIAL REAL ESTATE SERVICES

800

EAST 12TH STREET LOS ANGELES | CA

FOR LEASE

SHOWROOM/OFFICE



DEMOGRAPHICS

POPULATION	1 MILE	3 MILES	5 MILES
Total population	28,180	426,614	1,276,061
Median age	35.3	29.6	30.4
Median age (Male)	35.7	28.8	29.6
Median age (Female)	34.6	30.5	31.3

TRAFFIC COUNT

COLLECTION STREET	CROSS STREET	TRAFFIC VOLUME
Stanford Ave	E Pico Blvd SW	4,876
E 12th St	Crocker St NW	7,466
Stanford Ave		5,216
E 12th St	Crocker St SE	8,016

FOR MORE INFORMATION PLEASE CONTACT:

SEHYUNG KIM

VICE PRESIDENT

P: 213.290.3599

sehyung.kim@daumcommercial.com

CABRE #01327276

Although all information is furnished regarding for sale, rental or financing is from sources deemed reliable, such information has not been verified and no express representation is made nor is any to be implied as to the accuracy thereof, and it is submitted subject to errors, omissions, changes of price, rental or other conditions, prior sale, lease or financing, or withdrawal without notice.

