 **JLL** SEE A BRIGHTER WAY

# For lease

Greenview Corporate  
14225 University Avenue  
Waukee, Iowa 50263

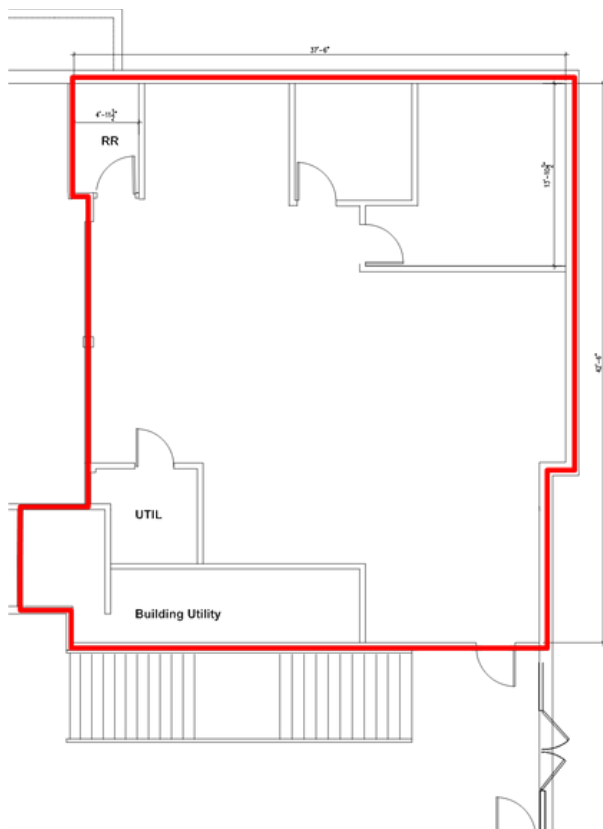
Office Space Available  
in Waukee

[jll.com/des-moines](http://jll.com/des-moines)

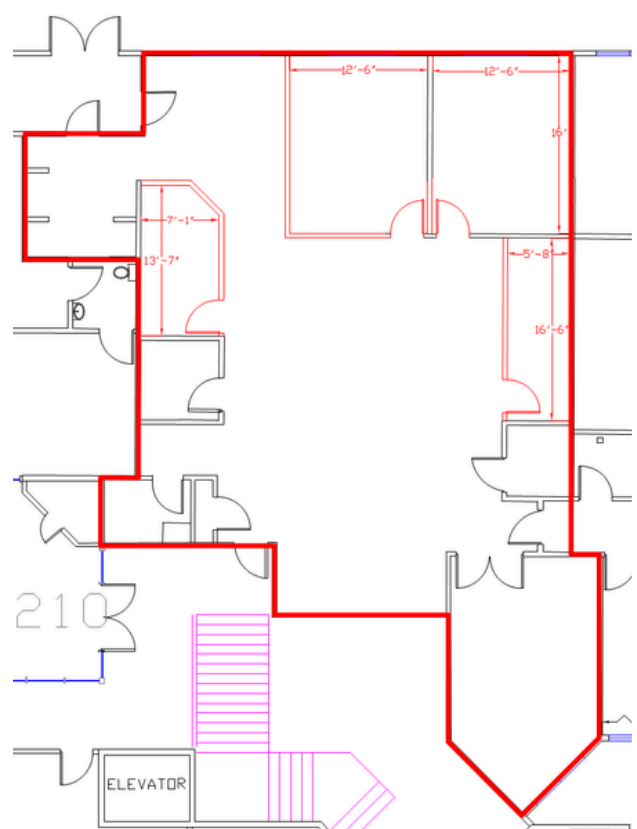
# Property overview

<b>Location</b>	14225 University Ave.   Waukee, Iowa
<b>Availability</b>	Suite 140: 1,504 RSF Suite 220A / 270: 2,227 RSF
<b>Lease rate</b>	\$12.00 PSF NNN
<b>Est. OPEX</b>	Request from broker
<b>Property information</b>	<ul style="list-style-type: none"> <li>• Convenient location on University Ave across from Des Moines Golf and Country Club</li> <li>• Easy access to major transportation routes including Interstate 80 and Interstate 235</li> <li>• Great visibility, immediately off Jordan Creek Parkway</li> <li>• Located adjacent to multiple single-family and multi-family housing developments, retail, office, commercial, and hospitality</li> </ul>

**Suite 140**



**Suite 220A/270**





*Demographics*

	<b>1 mile</b>	<b>3 miles</b>	<b>5 miles</b>
<b>Est. population</b>	5,109	78,763	143,870
<b>Est. households</b>	1,872	31,441	58,368
<b>Est. Average HH income</b>	\$167,044	\$119,545	\$116,664

*Traffic counts*

<b>University Ave (E)</b>	31,242 VPD
<b>University Ave (W)</b>	21,200 VPD
<b>142nd Street</b>	8,368 VPD

# For lease

14225 University Avenue | Waukee, Iowa 50263



**Greenview Corporate**  
14225 University Ave

**Des Moines Golf  
& Country Club**

Owned by: 

Managed by: 

**Contact broker for  
additional information**

[jll.com/des-moines](http://jll.com/des-moines)

**Justin Lossner, CCIM, SIOR**

Senior Managing Director

[justin.lossner@jll.com](mailto:justin.lossner@jll.com)

+1 515 371 0846

**Lucas Hedstrom**

Vice President

[lucas.hedstrom@jll.com](mailto:lucas.hedstrom@jll.com)

+1 515 564 9269