



FOR LEASE

Class A Office Space

**Evans
Elder
Brown &
Seubert**

COMMERCIAL REAL ESTATE

CONTACT

Stephanie Seubert

stephanie@eebcre.com

541.345.4860

Licensed in the State of Oregon.

DETAILS

- High quality office space with stunning views
- Conveniently located in the heart of Downtown Eugene
- High speed fiber connectivity
- \$1.95 per square foot, per month, Fully Serviced

US Bank Center
800 Willamette Street
Eugene, Oregon 97401

Entire 2nd Floor

US Bank Center
800 Willamette Street, Eugene OR 97401

Evans
Elder
Brown &
Seubert

COMMERCIAL REAL ESTATE

CONTACT

**Stephanie
Seubert**

stephanie@eebcre.com

541.345.4860

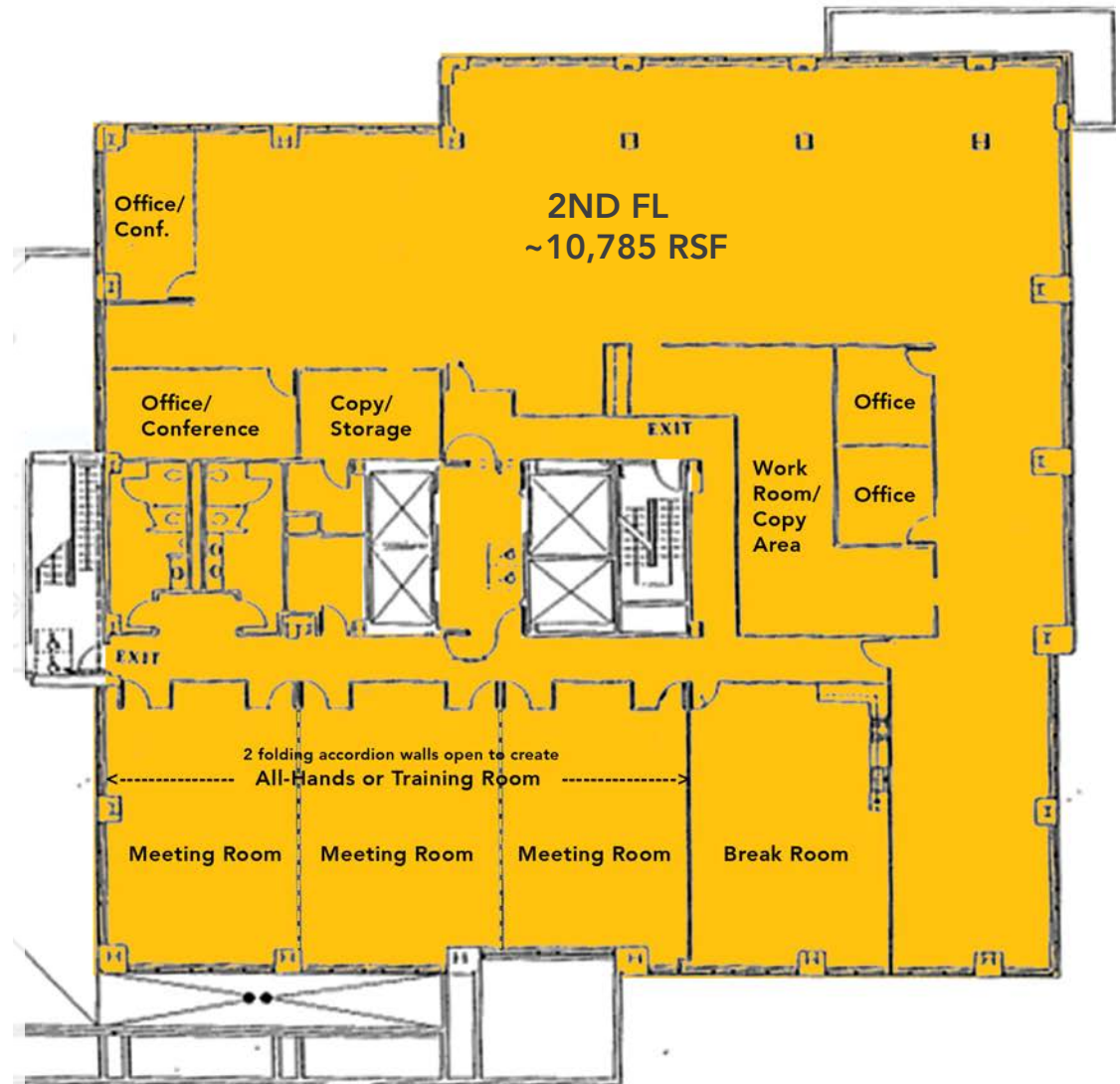
101 East Broadway
Suite #101
Eugene, OR 97401

Licensed in the
State of Oregon.

2nd Floor

APPROX. 10,785 RSF

- Space is divisible
- A combination of private offices and open work area
- 3 large meeting rooms can be combined to form an "all-hands" meeting or training room
- Large Break Room
- Operable windows provide abundant natural light throughout the space
- Multi-stall restrooms



Entire 3rd Floor

US Bank Center
800 Willamette Street, Eugene OR 97401

Evans
Elder
Brown &
Seubert

COMMERCIAL REAL ESTATE

CONTACT

**Stephanie
Seubert**

stephanie@eebcre.com

541.345.4860

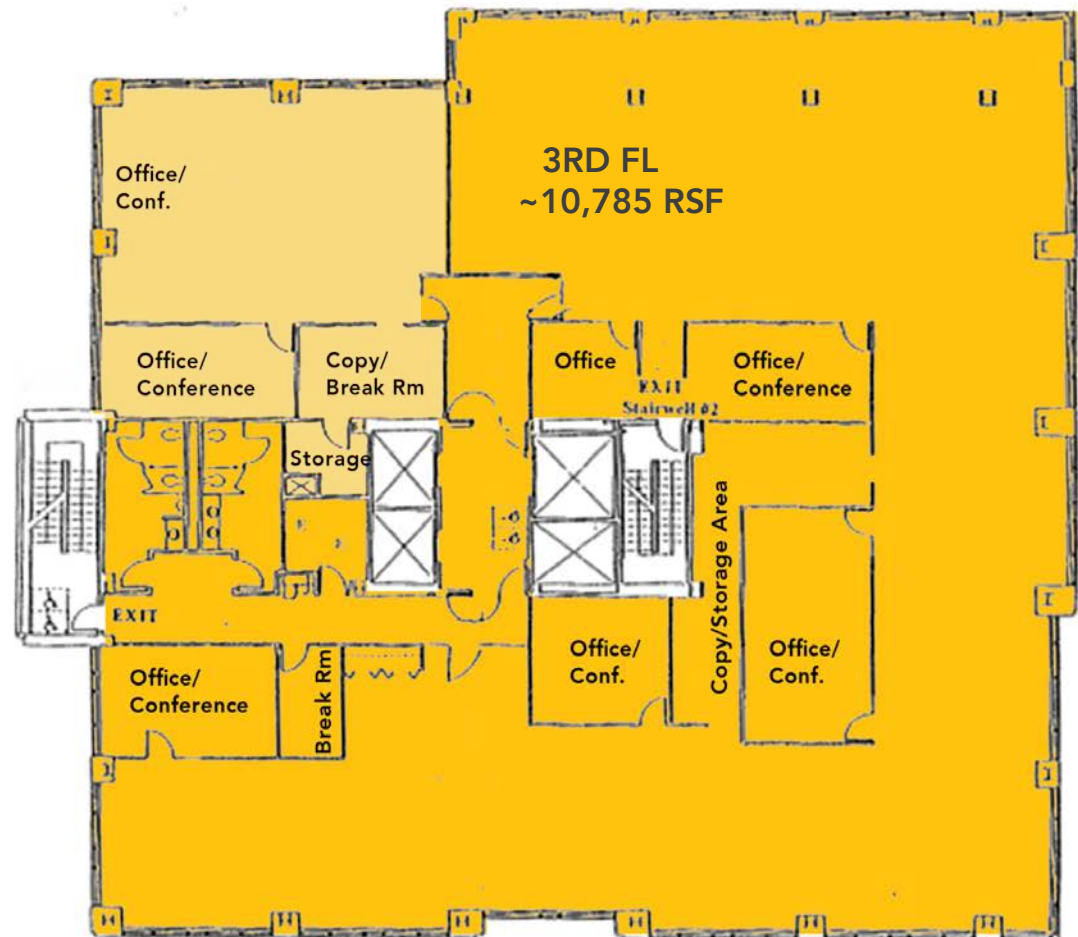
101 East Broadway
Suite #101
Eugene, OR 97401

Licensed in the
State of Oregon.

3rd Floor

APPROX. 10,785 RSF

- Space is divisible
- Beautiful stand-alone office in SW corner is already demised.
- A combination of private offices and open work area
- Operable windows provide abundant natural light throughout the space
- Multi-stall restrooms



4th Floor Space

US Bank Center
800 Willamette Street, Eugene OR 97401

Evans
Elder
Brown &
Seubert

COMMERCIAL REAL ESTATE

CONTACT

**Stephanie
Seubert**

stephanie@eebcre.com

541.345.4860

101 East Broadway
Suite #101
Eugene, OR 97401

Licensed in the
State of Oregon.



4th Floor

APPROX. 1,000 RSF SHELL SPACE

- Tenant Improvement Allowance negotiable
- Space can be designed specifically to fit Tenant's needs
- Operable windows
- Common area restrooms

Suite 525

US Bank Center
800 Willamette Street, Eugene OR 97401

Evans
Elder
Brown &
Seubert

COMMERCIAL REAL ESTATE

CONTACT

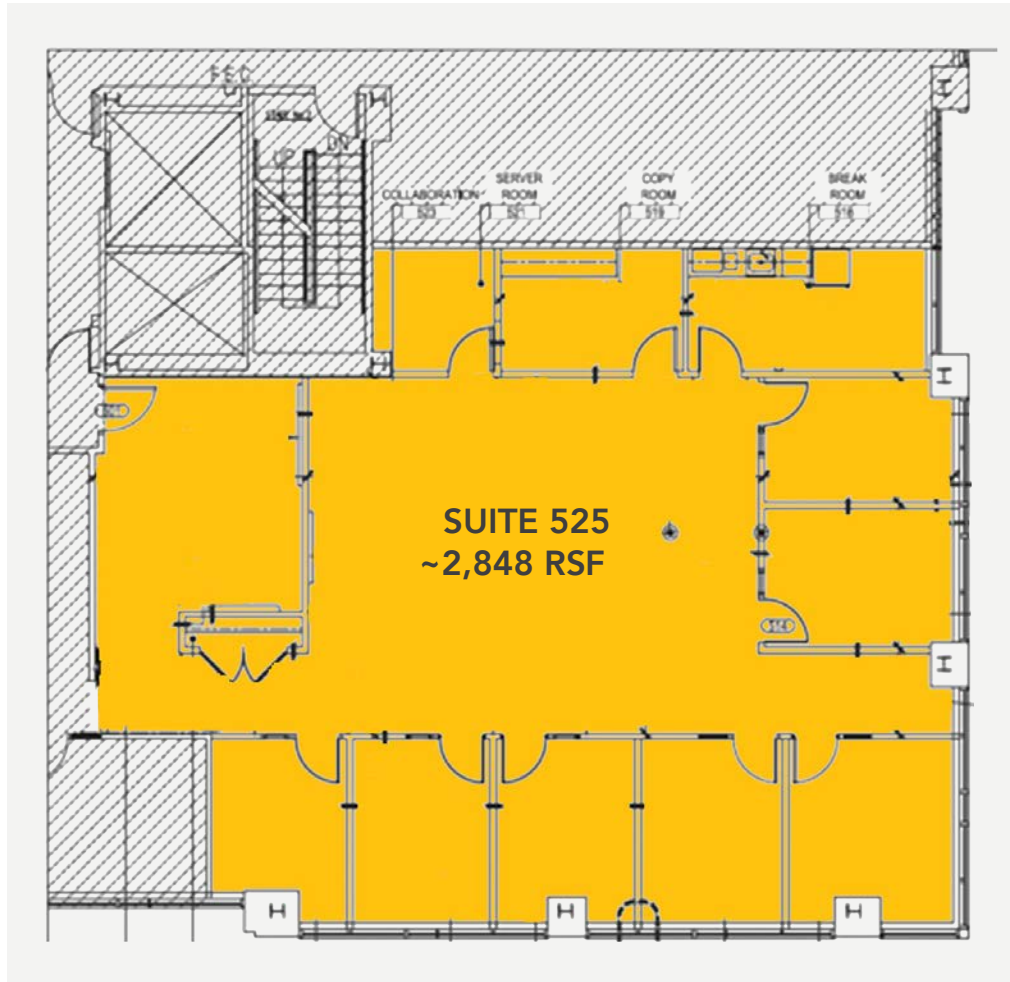
**Stephanie
Seubert**

stephanie@eebcre.com

541.345.4860

101 East Broadway
Suite #101
Eugene, OR 97401

Licensed in the
State of Oregon.



Suite 525

APPROX. 2,848 RENTABLE SQ. FT.

Quality corner suite includes:

- Reception area
- Seven (7) private offices
- Kitchen/break room
- Server room
- Copy room
- Open work area
- Operable windows
- Common area restrooms

Suite 600

US Bank Center
800 Willamette Street, Eugene OR 97401

Evans
Elder
Brown &
Seubert

COMMERCIAL REAL ESTATE

CONTACT

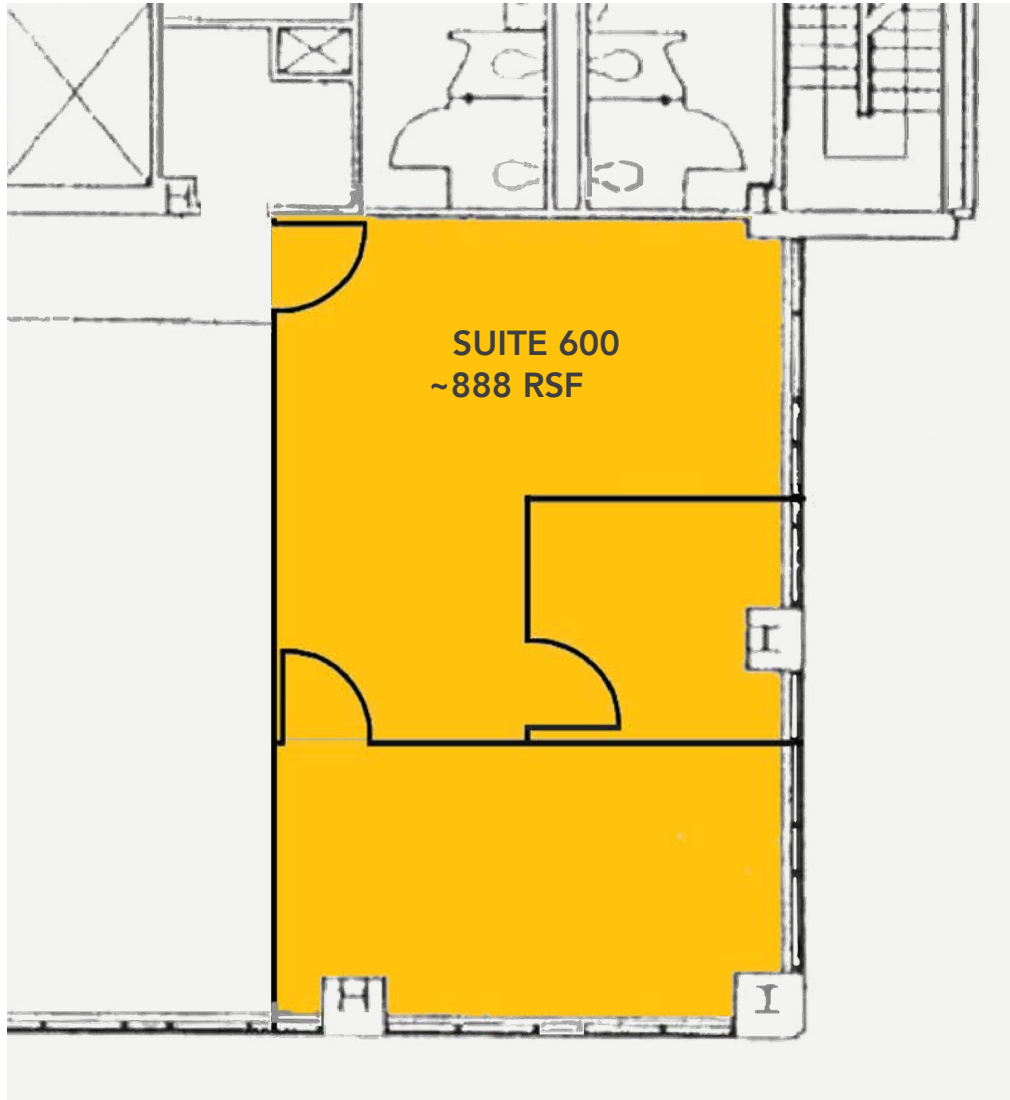
**Stephanie
Seubert**

stephanie@eebcre.com

541.345.4860

101 East Broadway
Suite #101
Eugene, OR 97401

Licensed in the
State of Oregon.



Suite 600

APPROX. 888 RENTABLE SQ. FT.

Southwest facing corner space includes:

- Two (2) private offices
- Open work areas
- Common area restrooms

Could be combined with Suite 620 for a total of approximately 2,591 square feet

Suite 620

US Bank Center
800 Willamette Street, Eugene OR 97401

Evans
Elder
Brown &
Seubert

COMMERCIAL REAL ESTATE

CONTACT

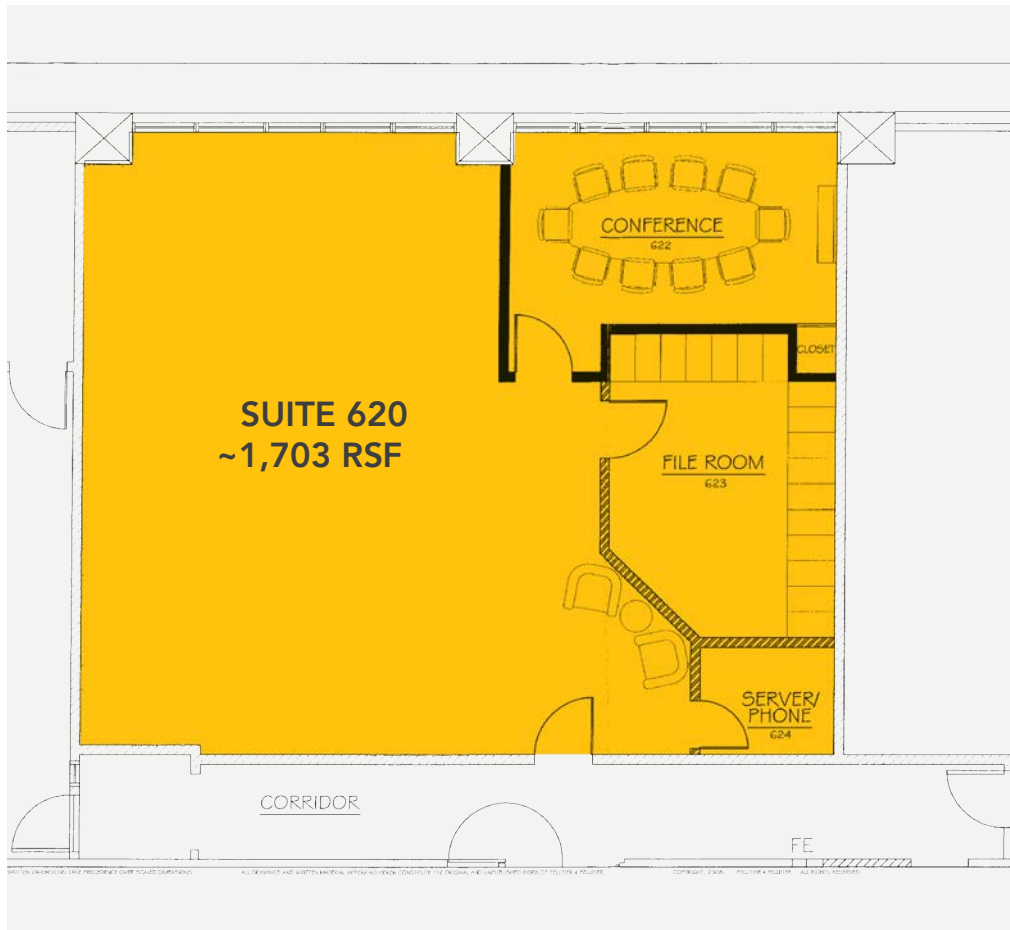
**Stephanie
Seubert**

stephanie@eebcre.com

541.345.4860

101 East Broadway
Suite #101
Eugene, OR 97401

Licensed in the
State of Oregon.



Suite 620

APPROX. 1,703 RENTABLE SQ. FT.

- Open work area with large private conference room or office, storage area or 2nd office, and server room
- Operable windows provide abundant natural light and stunning views to the west
- Common area restrooms

Could be combined with Suite 600 for a total of approximately 2,591 square feet

Suite 700

US Bank Center
800 Willamette Street, Eugene OR 97401

Evans
Elder
Brown &
Seubert

COMMERCIAL REAL ESTATE

CONTACT

**Stephanie
Seubert**

stephanie@eebcre.com

541.345.4860

101 East Broadway
Suite #101
Eugene, OR 97401

Licensed in the
State of Oregon.

Suite 700

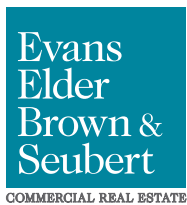
APPROX. 2,464 RSF

- Reception Area
- 5 Private Offices
- 2 Conference Rooms
- Kitchen
- Server Room
- Small Open Work Area



Location

US Bank Center
800 Willamette Street, Eugene OR 97401



CONTACT

Stephanie Seubert
stephanie@eebcre.com

541.345.4860