

38275 W 12 Mile Rd

Farmington Hills, MI

*Brookfield
Center*

- 2-Story Office Building
- Entire 2nd Floor Available - 17,960 SF
- Up to 6,145 SF on 1st Floor
- All Common Areas Fully Renovated
- Professionally Managed
Property
- Interior Built to Suit
- Close Proximity to Area
Freeways
- Signage Opportunities Available



OFFICE BUILDING FOR LEASE

FOR MORE INFORMATION:

Mason L. Capitani, SIOR
Managing Partner
248.637.7795
MLcapitani@LMCap.com

Aaron Smith
Vice President
248.637.3515
asmith@LMCap.com



L. MASON CAPITANI
CORFAC INTERNATIONAL

LIBERTY
PROPERTY & ASSET MANAGEMENT

248.637.9700 | LMCap.com

Information contained herein was obtained from sources deemed to be reliable but is not guaranteed. Subjects to prior sales, changes of price or withdrawal.

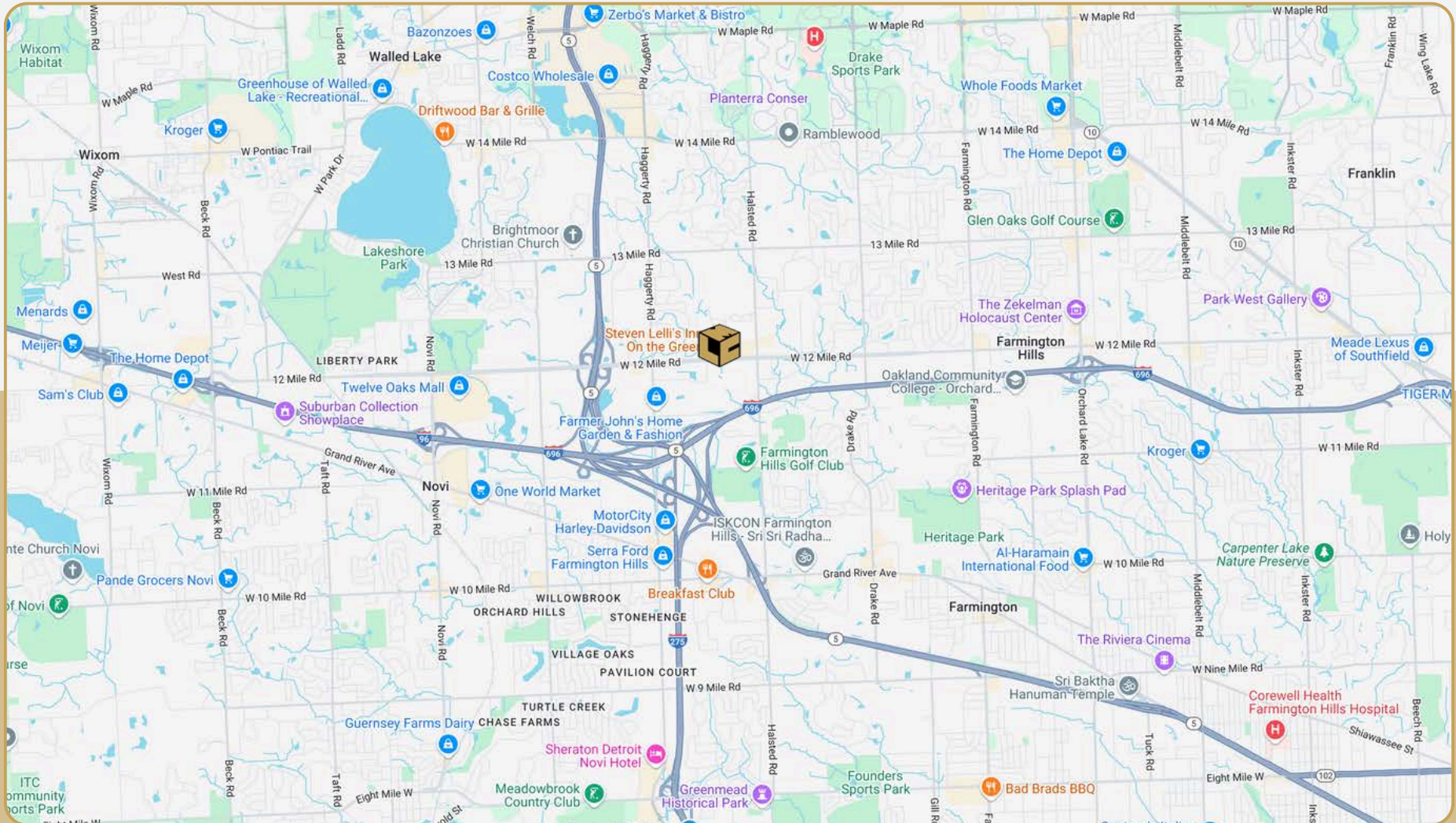
38275 W 12 Mile Rd

Farmington Hills, MI



L. MASON CAPITANI
CORFAC INTERNATIONAL

LIBERTY
PROPERTY & ASSET MANAGEMENT



248.637.9700 | LMCap.com

Information contained herein was obtained from sources deemed to be reliable but is not guaranteed. Subjects to prior sales, changes of price or withdrawal.

38275 W 12 Mile Rd
Farmington Hills, MI



LIBERTY
PROPERTY & ASSET MANAGEMENT



248.637.9700 | LMCap.com

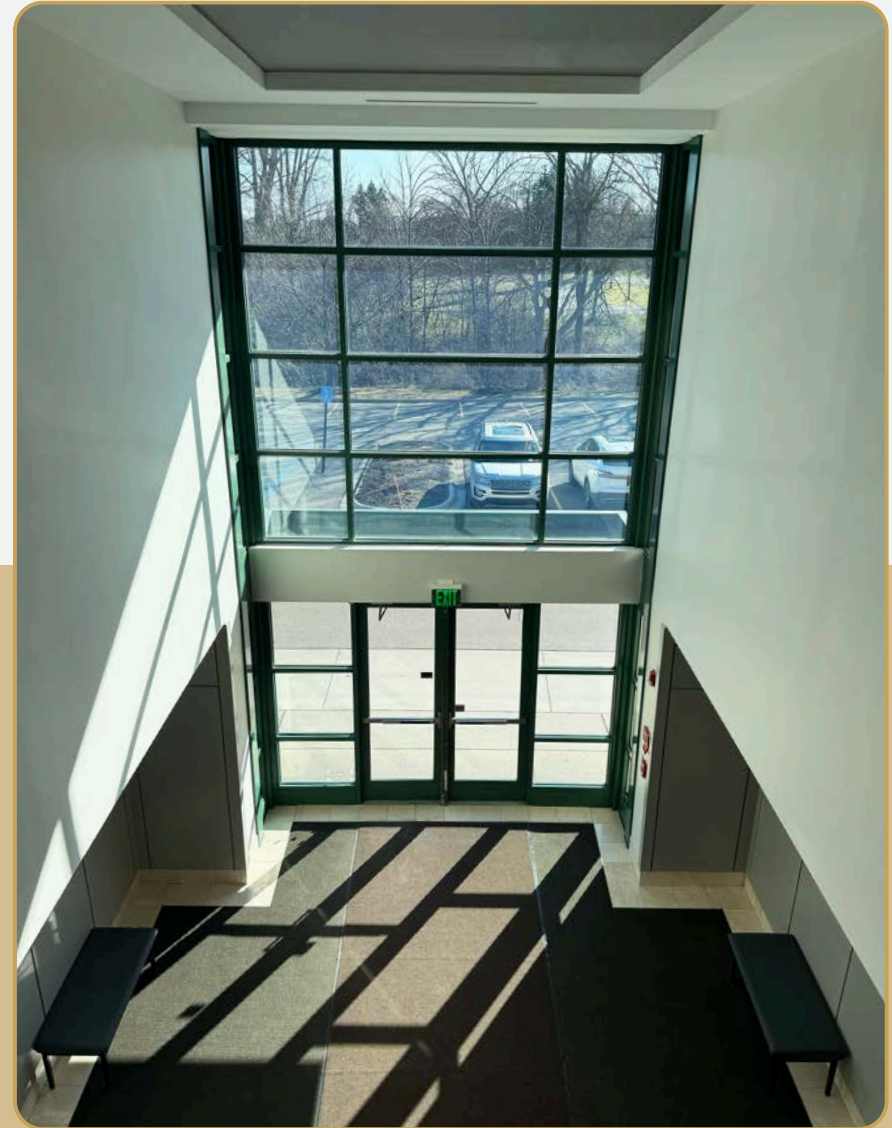
Information contained herein was obtained from sources deemed to be reliable but is not guaranteed. Subjects to prior sales, changes of price or withdrawal.

38275 W 12 Mile Rd
Farmington Hills, MI



L. MASON CAPITANI
CORFAC INTERNATIONAL

LIBERTY
PROPERTY & ASSET MANAGEMENT



248.637.9700 | LMCap.com

Information contained herein was obtained from sources deemed to be reliable but is not guaranteed. Subjects to prior sales, changes of price or withdrawal.

38275 W 12 Mile Rd

Farmington Hills, MI



L. MASON CAPITANI
CORFAC INTERNATIONAL

LIBERTY
PROPERTY & ASSET MANAGEMENT

Office Property Details:

Details:

Location Description: West of Halsted Rd

Building Type: Office

Class: B

Zoning: Office

Floors: 2

Year Built: 2001

Gross SF: 35,365 SF

Total Rentable SF: 35,365 SF

Available SF: 24,105 SF

Min/Max SF: 3,000 SF - 17,960 SF

Acres: 2.55

Multitenant: Yes

Parcel ID: 23-18-200-061

Property Description: This professionally managed building is currently undergoing a complete interior and exterior renovation. Main road signage available.

Economic:

Min/Max Rental Rate: \$16.95/SF

Rental Terms: + Electric

Annual Escalations: \$0.50/SF

Load Factor: 10.0%

Occupancy: Immediate

Parking:: Surface; 4.1/1,000

Partition Allowance: TBD

Status: Existing

Operating Expenses: Base Year

38275 W 12 Mile Rd

Farmington Hills, MI



L. MASON CAPITANI
CORFAC INTERNATIONAL

LIBERTY
PROPERTY & ASSET MANAGEMENT

First Floor Vacancy



Suite Number	Square Footage
105	6,145 SF

248.637.9700 | LMCap.com

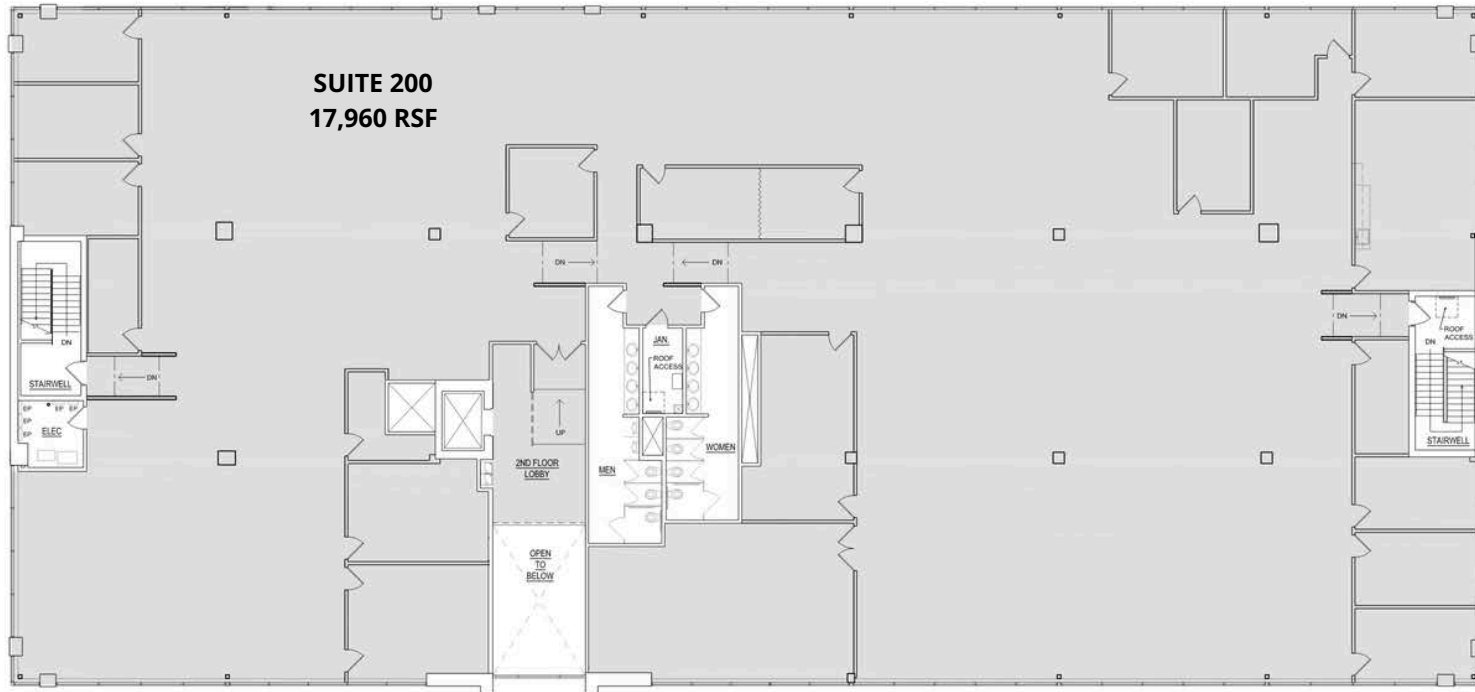
Information contained herein was obtained from sources deemed to be reliable but is not guaranteed. Subjects to prior sales, changes of price or withdrawal.

38275 W 12 Mile Rd
Farmington Hills, MI



LIBERTY
PROPERTY & ASSET MANAGEMENT

Second Floor Vacancy



Suite Number	Square Footage	Virtual Tour
Suite 200	17,960 SF	View Here

248.637.9700 | LMCap.com

Information contained herein was obtained from sources deemed to be reliable but is not guaranteed. Subjects to prior sales, changes of price or withdrawal.