

FOR LEASE

# PARK TOWERS

201 NE PARK PLAZA DRIVE | VANCOUVER, WA 98684

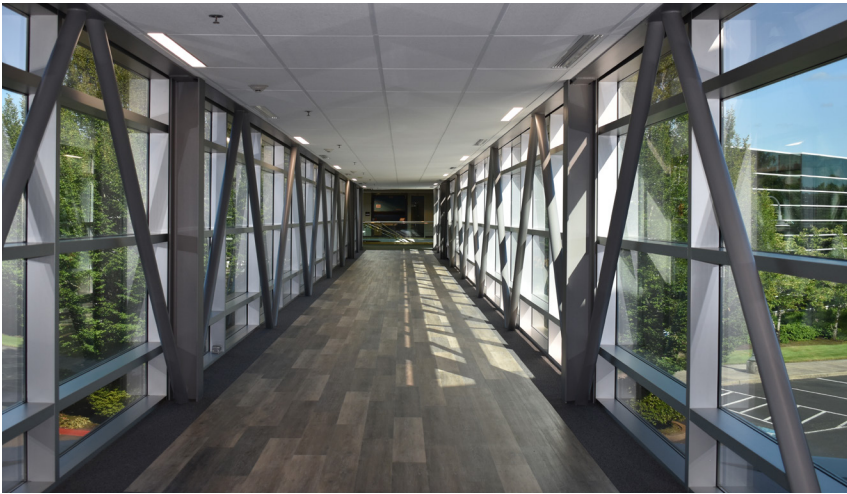
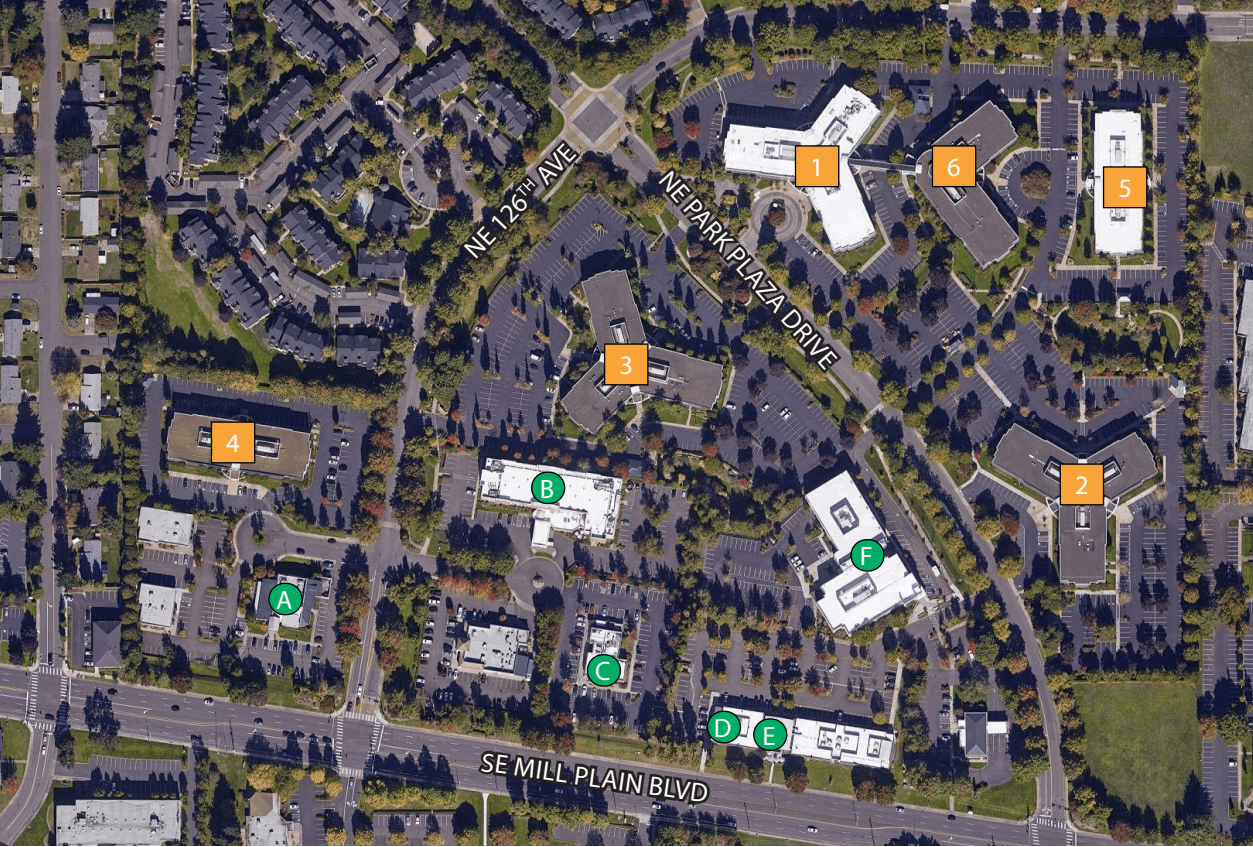


- Six Class A office buildings totaling approximately 340,000 SF
- Ideally located near I-205 and SE Mill Plain Boulevard with convenient access to PDX International Airport, SR-500, downtown Vancouver and Portland
- On-site amenities include free conference facilities, tenant lounge, bike storage, and showers



# AMENITIES

Building	Amenity
1. Park Tower I	A. McGrath's
2. Park Tower II	B. DoubleTree Hotel
3. Park Tower III	C. Applebee's
4. Park Tower IV	D. FedEx Print & Ship
5. Park Tower V	E. Kenji's Ramen & Grill
6. Park Tower Addition	F. Columbia Credit Union



# PARK TOWERS

Building	Suite	Square Feet	Notes
Building Addition	160	822	Open office area
Building Addition	167	7,101	8 offices, 2 conference rooms, breakroom, open office area, storage and reception area
Building Addition	195	7,040	9 offices, large conference room, kitchen, open office area, storage, reception area
Building Addition	265	6,751 - 12,333	24 offices, 3 conference rooms, breakroom, open office area, storage, reception area
Building Addition	295	959	Open office area, kitchenette and storage room
Building Addition	296	4,839	8 offices, breakroom, open office area
I	105	7,973	16 offices, 2 conference rooms, breakroom, open office area, work room, storage, reception area
I	135	1,227	3 offices, open office area
I	240	3,540	9 offices, large conference room, breakroom, open office area, work room
II	290	10,462	Available August 2023, divisible. Multiple private offices, conference rooms, break room, open office area, work room and reception
III	205	8,935	Sublease available through April 2024, asking rate \$21/RSF
III	220	4,020	Warm shell
III	230	7,679	10 offices, 2 conference rooms, breakroom, open office area, storage
IV	207	1,627	7 offices
IV	208	1,676	4 offices, conference room, open office area
IV	230	1,607	2 offices, breakroom and open office area
IV	240	1,915	Warm shell



# PARK TOWERS

- Rental rate \$26-\$27/RSF full service gross
- On-site management
- Parking ratio 4:1,000
- Jogging/walking trails throughout office park

## DRIVE TIMES



**KRISTIN HAMMOND**  
Senior Vice President  
+1 503 221 4860  
kristin.hammond@cbre.com  
Licensed in OR & WA

**ALISON VAUGHAN**  
Associate  
+1 503 221 4862  
alison.vaughan@cbre.com  
Licensed in OR & WA



© 2022 CBRE, Inc. All rights reserved. This information has been obtained from sources believed reliable, but has not been verified for accuracy or completeness. You should conduct a careful, independent investigation of the property and verify all information. Any reliance on this information is solely at your own risk. Photos herein are the property of their respective owners and use of these images without the express written consent of the owner is prohibited. CBRE and the CBRE logo are service marks of CBRE, Inc. and/or its affiliated or related companies in the United States and other countries. All other marks displayed on this document are the property of their respective owners.

# CBRE