

23611 LIBERTY STREET  
FARMINGTON, MICHIGAN

OFFICE FOR SALE  
1,668 Square Feet Available



**SIGNATURE  
ASSOCIATES**  
KNOW SIGNATURE | KNOW RESULTS

**DOWNTOWN FARMINGTON LOCATION**



## PROPERTY FEATURES

- 1,668 square feet available
- Incredible office opportunity
- Property is adjacent to the Farmington library and municipal offices
- 1 block away from Grand River Avenue and Farmington Road intersection
- Ideal for a small office or quasi retail user looking for a vibrant location for their office
- Previously a tax-exempt church
- Sale Price: \$395,000 (\$236.81/sq. ft.)



For more information, please contact:

**JASON STOUGH**

(248) 948 4180

[jstough@signatureassociates.com](mailto:jstough@signatureassociates.com)

**CHRISTOPHER M. D'ANGELO**

(248) 948 0109

[cdangelo@signatureassociates.com](mailto:cdangelo@signatureassociates.com)

**SIGNATURE ASSOCIATES**

One Towne Square, Suite 1200

Southfield, MI 48076

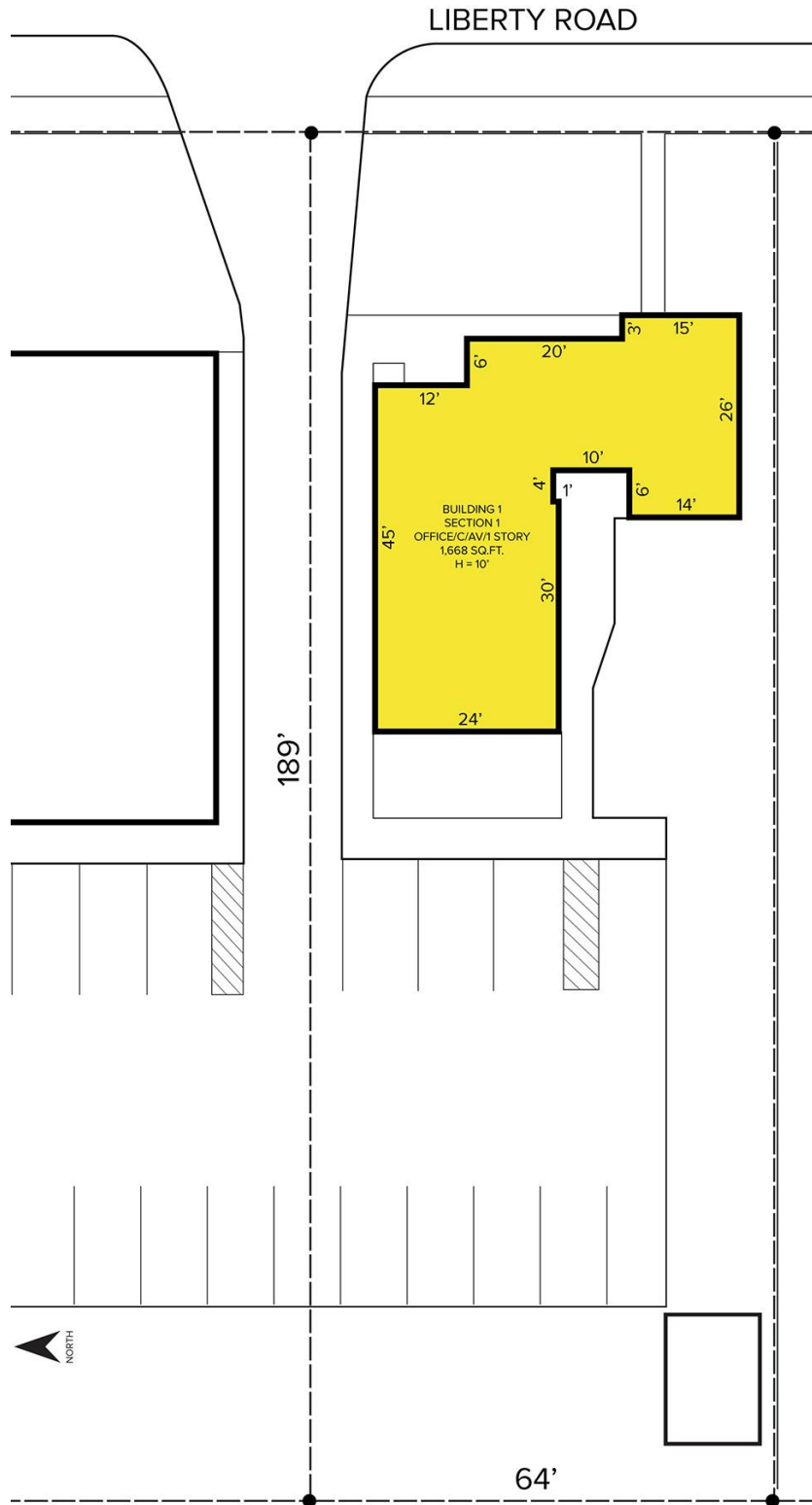
[www.signatureassociates.com](http://www.signatureassociates.com)

# 23611 Liberty Street – Farmington, Michigan

Office For Sale

1,668  
Square Feet  
AVAILABLE

## Site Plan



For more information, please contact:

**JASON STOUGH**

(248) 948 4180

[jstough@signatureassociates.com](mailto:jstough@signatureassociates.com)

**CHRISTOPHER M. D'ANGELO**

(248) 948 0109

[cdangelo@signatureassociates.com](mailto:cdangelo@signatureassociates.com)

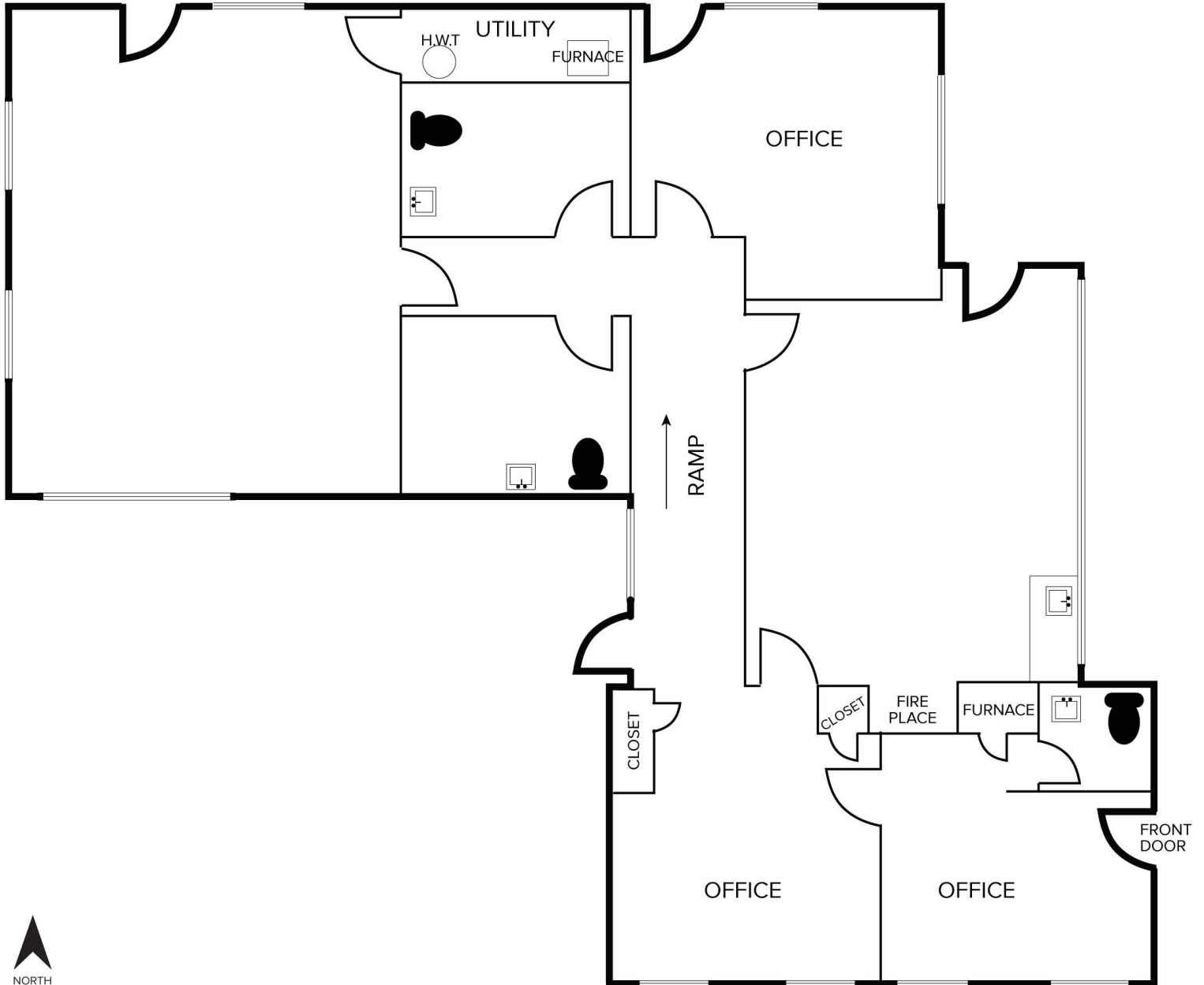
**SIGNATURE ASSOCIATES**

One Towne Square, Suite 1200

Southfield, MI 48076

[www.signatureassociates.com](http://www.signatureassociates.com)

Floor Plan



For more information, please contact:

**JASON STOUGH**

(248) 948 4180

[jstough@signatureassociates.com](mailto:jstough@signatureassociates.com)

**CHRISTOPHER M. D'ANGELO**

(248) 948 0109

[cdangelo@signatureassociates.com](mailto:cdangelo@signatureassociates.com)

**SIGNATURE ASSOCIATES**

One Towne Square, Suite 1200

Southfield, MI 48076

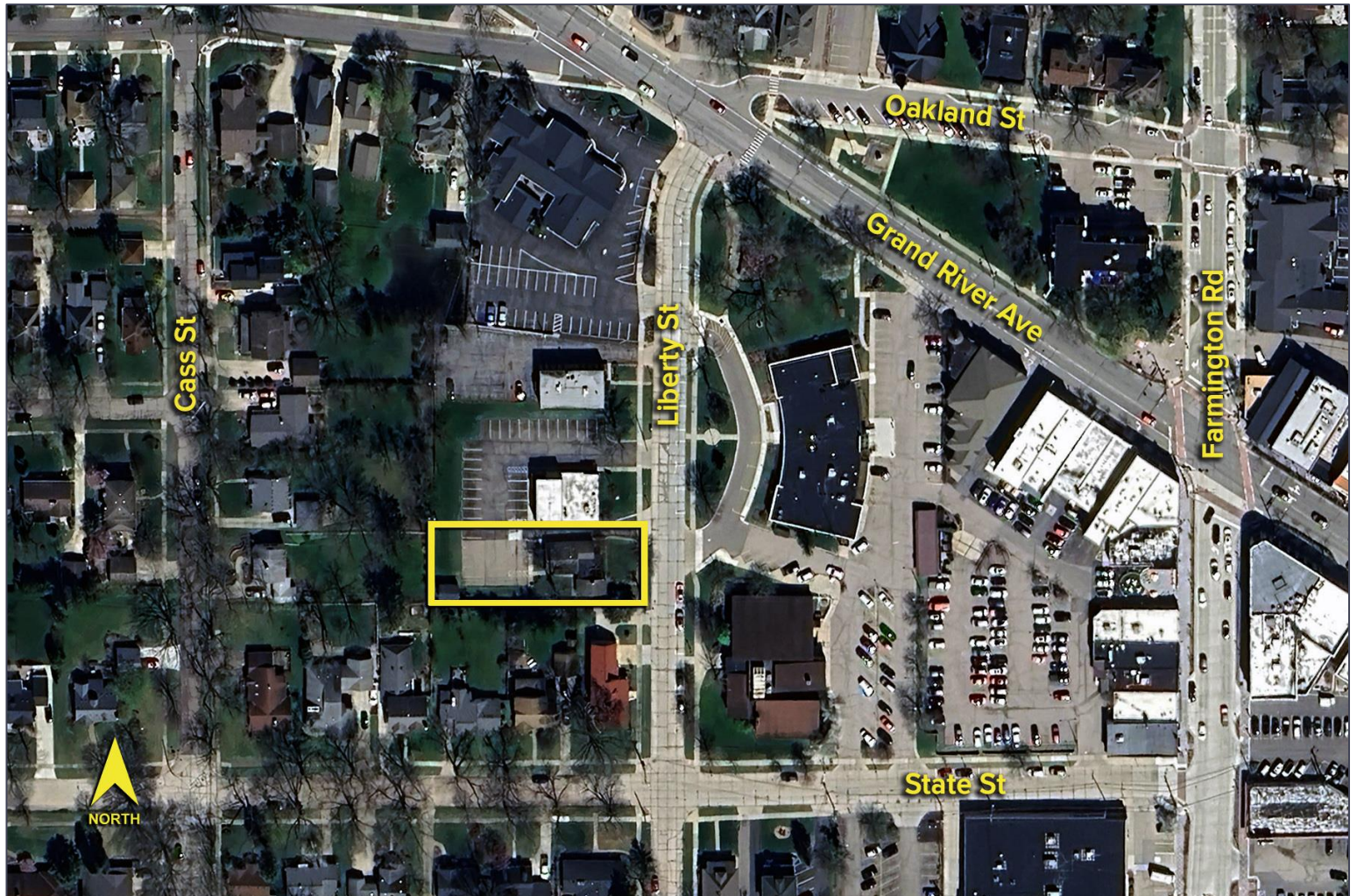
[www.signatureassociates.com](http://www.signatureassociates.com)

# 23611 Liberty Street – Farmington, Michigan

Office For Sale

1,668  
Square Feet  
AVAILABLE

Aerial



For more information, please contact:

**JASON STOUGH**

(248) 948 4180

[jstough@signatureassociates.com](mailto:jstough@signatureassociates.com)

**CHRISTOPHER M. D'ANGELO**

(248) 948 0109

[cdangelo@signatureassociates.com](mailto:cdangelo@signatureassociates.com)

**SIGNATURE ASSOCIATES**

One Towne Square, Suite 1200

Southfield, MI 48076

[www.signatureassociates.com](http://www.signatureassociates.com)