



# Madison Commons

300 Hughes Road Madison, AL 35758



## FOR LEASE

### Property Highlights

- Multiple spaces available in Publix-anchored center
- Two suites remaining ranging from 1,050 SF to 2,341 SF
- Excellent visibility and 7 points of access
- Located at 2 signalized intersections and less than 2 miles from US-72
- Call for more information and pricing



SQ FT  
1,050-2,341



TRAFFIC  
23,245 VPD



LOCATION  
Hughes Rd. & Madison Pike

### Demographics

1 mile

3 mile

5 mile

	1 mile	3 mile	5 mile
Population	7,332	49,356	95,953
Households	2,915	19,196	39,765
Daytime Pop	6,303	47,846	117,374
Med HH Income	\$86,894	\$90,550	\$84,644

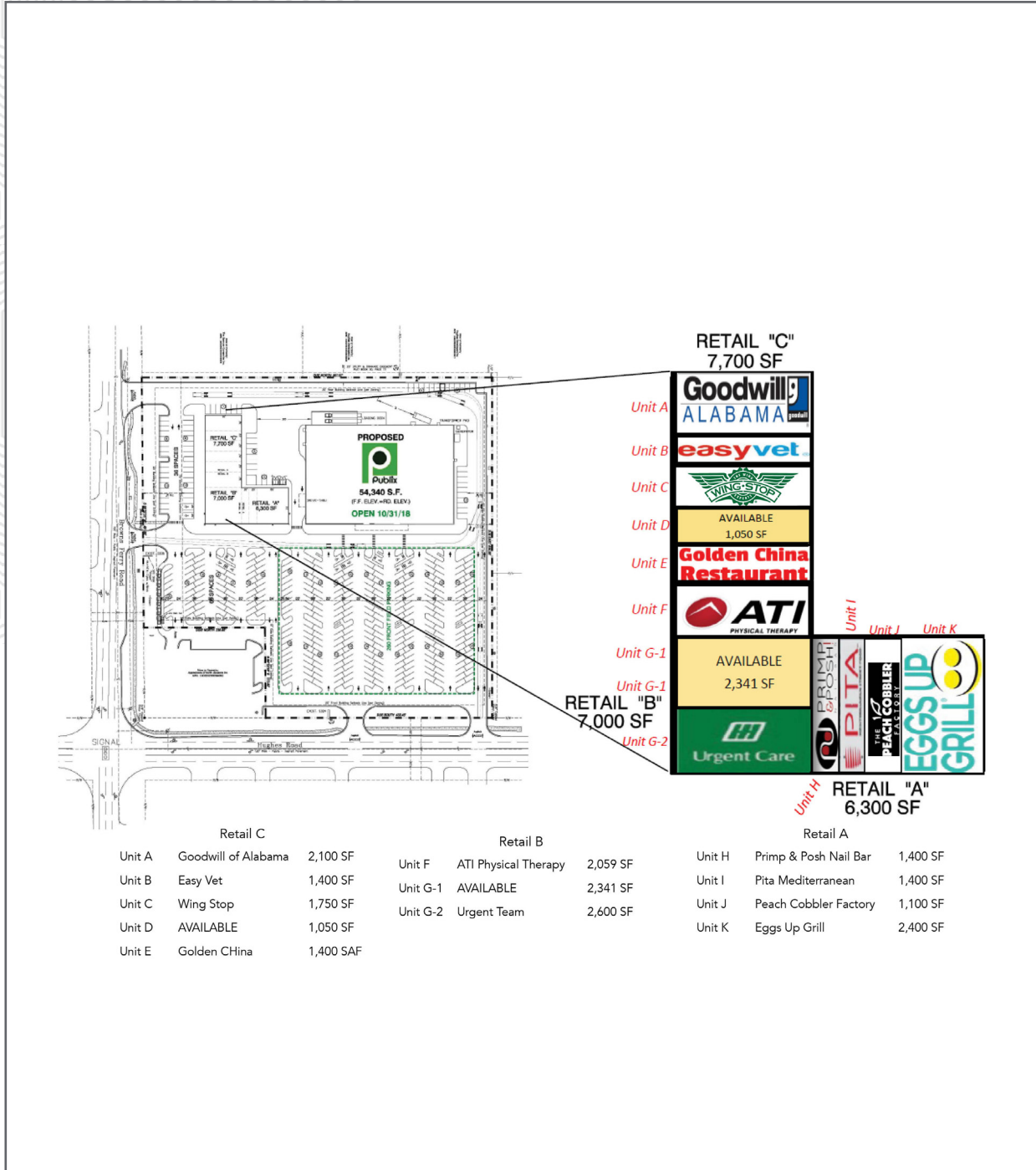
Beau Young [beau.young@retailspecialists.com](mailto:beau.young@retailspecialists.com) 205.314.0930



# Madison Commons

300 Hughes Road Madison, AL 35758

## Site Plan



**FOR LEASE**

Beau Young beau.young@retailspecialists.com 205.314.0930

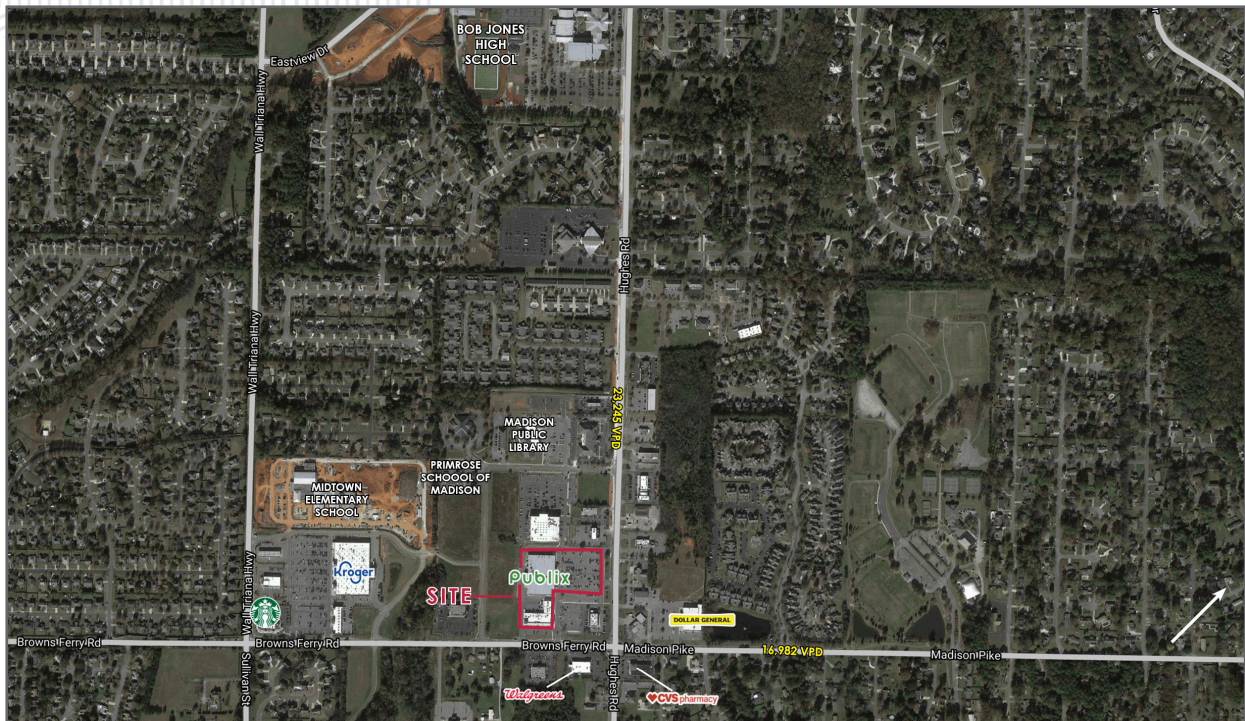


retail specialists

# Madison Commons

300 Hughes Road Madison, AL 35758

## Market Aerials



**FOR LEASE**

Beau Young [beau.young@retailspecialists.com](mailto:beau.young@retailspecialists.com) 205.314.0930