

# NEWNAN 85 COMMERCE PARK

46,160 - 106,599 SF AVAILABLE

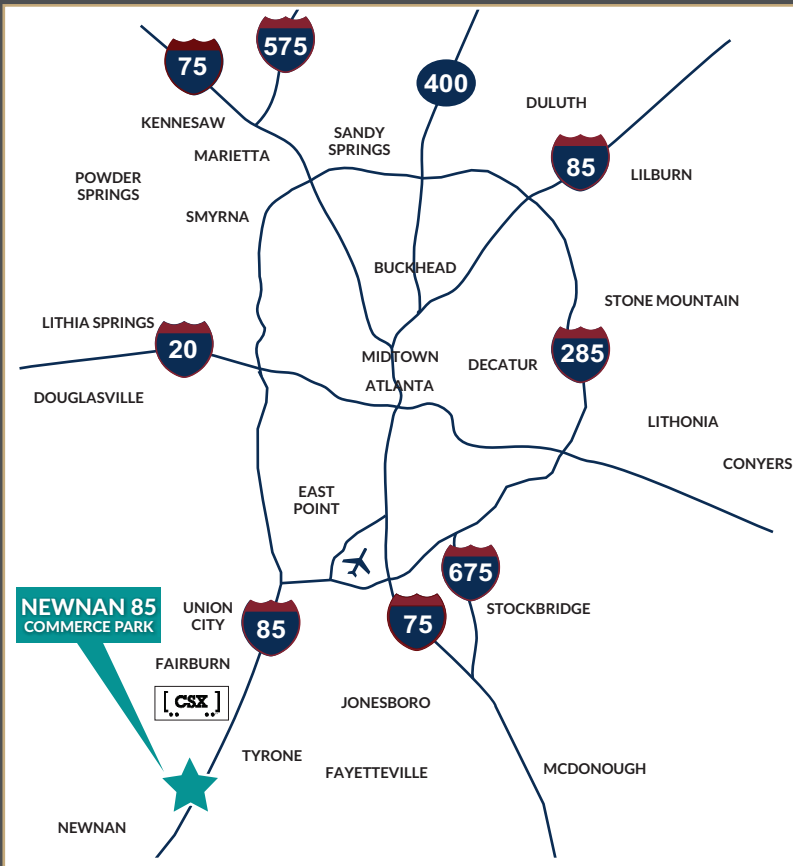


**WILSON  
HULL  
& NEAL**  
REAL ESTATE, LLC

**CROW  
HOLDINGS**  
INDUSTRIAL

# NEWNAN 85 COMMERCE PARK

## LOGISTICAL ADVANTAGES



### AIRPORT:

Hartsfield-Jackson Atlanta  
International Airport:  
25 miles



### RAIL:

CSX Fairburn: 17 miles  
Norfolk Southern: 36 miles



### INTERSTATE:

To I-85: 3/4 mile  
To I-285: 23 miles  
To Downtown: 36 miles



### PORT CITIES:

Savannah: 253 miles  
Charleston: 329 miles  
Jacksonville: 348 miles

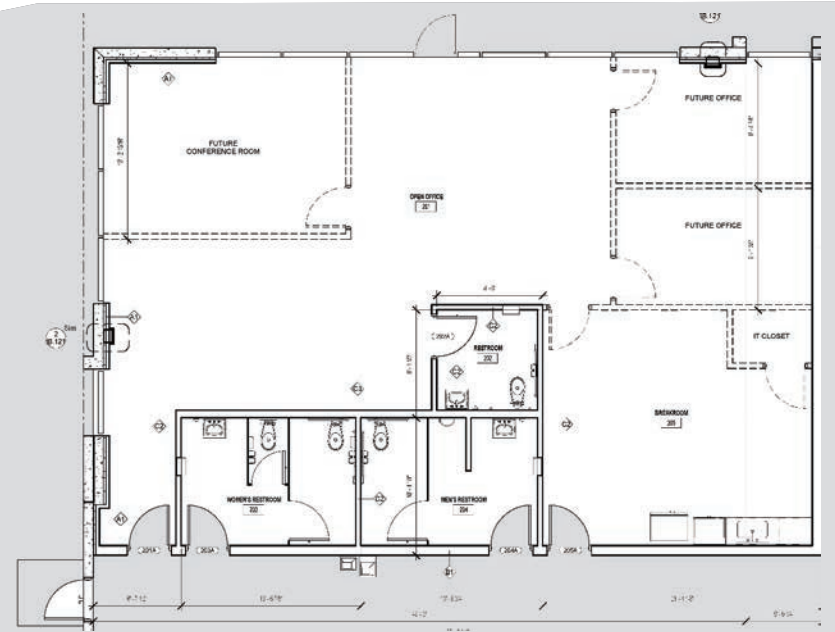
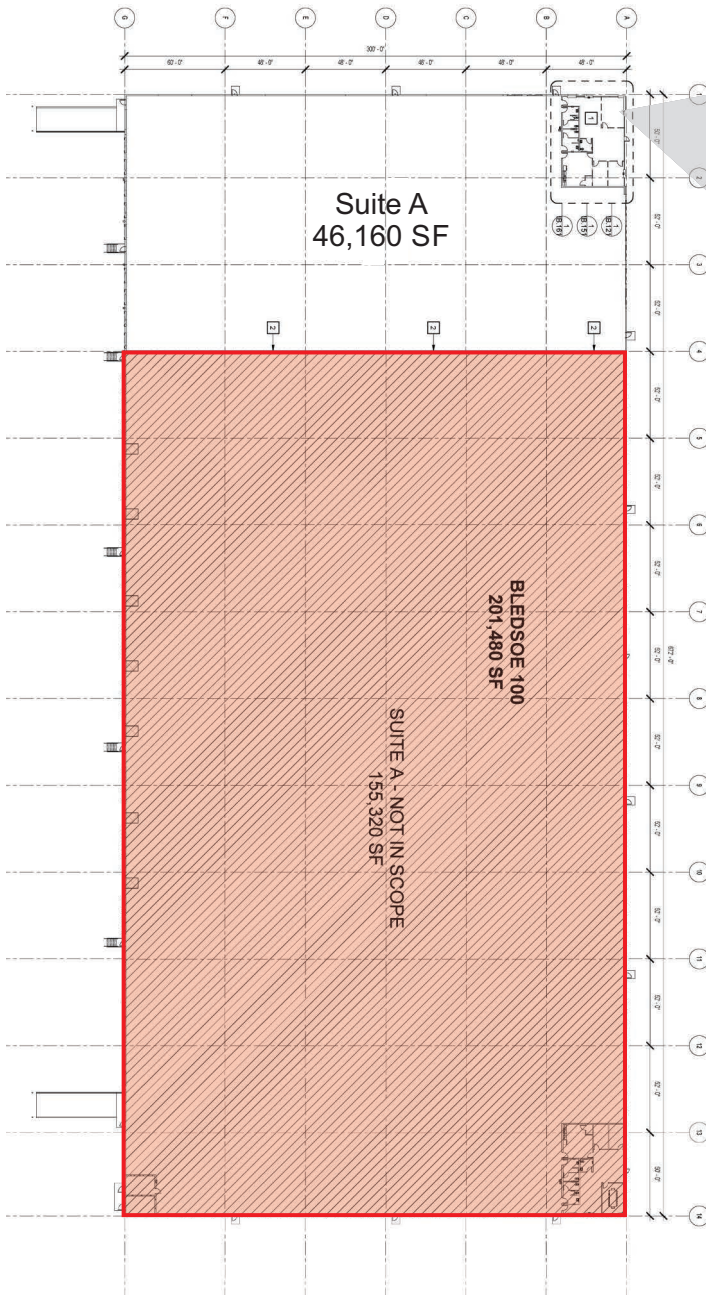
### BLDG. 100 SPECS Suite B

TOTAL SF:	46,160 SF
DIMENSIONS:	154' W x 300' D
CLEAR HEIGHT:	32'
DOCK HIGH DOORS:	9
DRIVE-IN DOORS:	1
COLUMN SPACING:	52' W x 48' D; 60' Speed Bay
SPRINKLERS:	ESFR
AUTO PARKING:	26
TRAILER PARKING:	-
ADDITIONAL FEATURES:	Clerestory Windows
SPEC OFFICE:	2,076 SF
LIGHTING:	LED's - 30' FC
LEVELERS:	3 - 40,000 lbs.

### BLDG. 200 SPECS Suite B

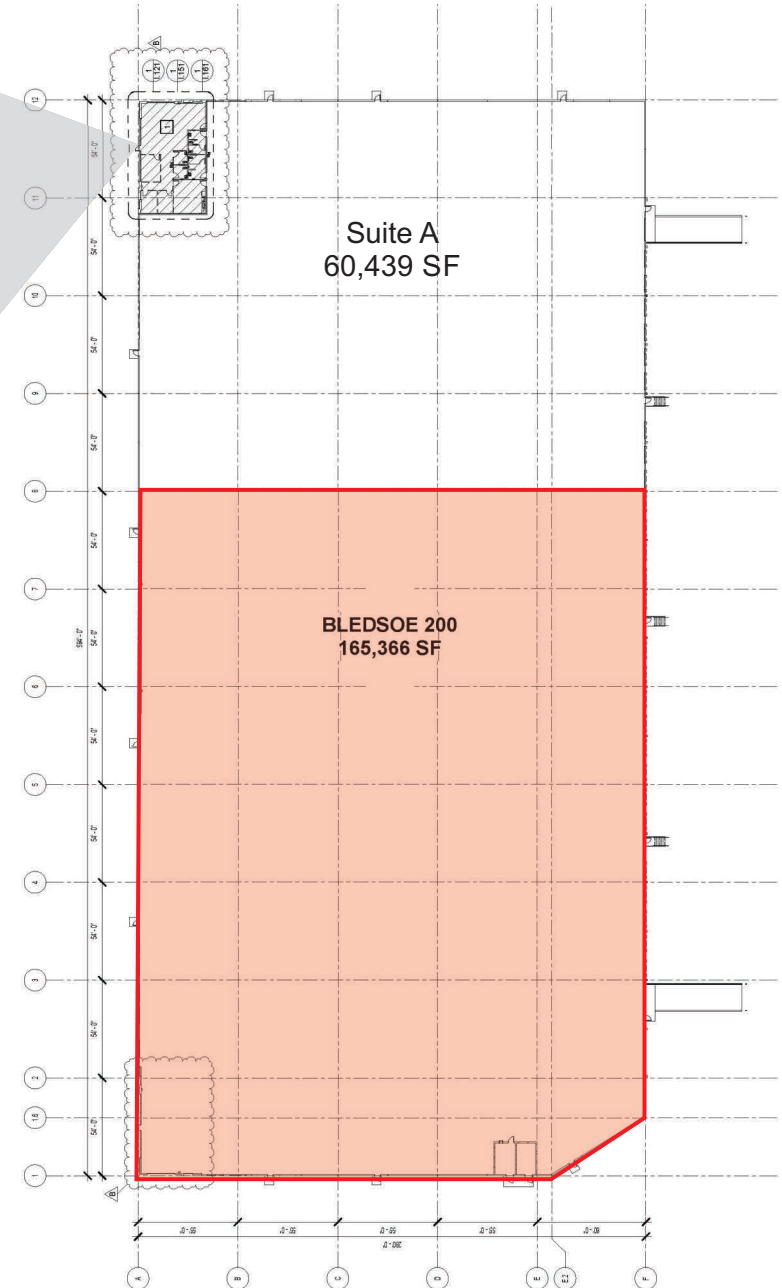
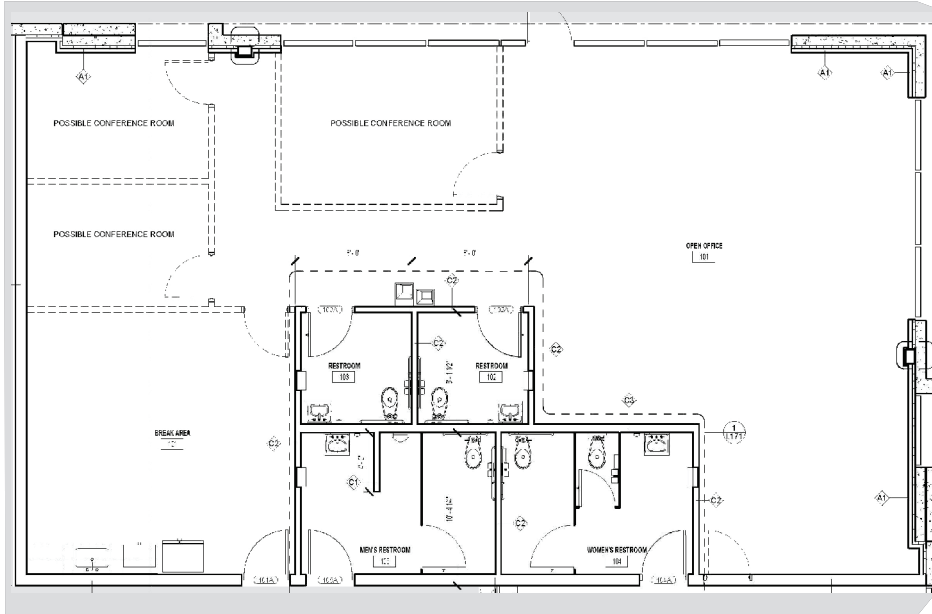
TOTAL SF:	60,439 SF
DIMENSIONS:	216' W x 280' D
CLEAR HEIGHT:	32'
DOCK HIGH DOORS:	9
DRIVE-IN DOORS:	1
COLUMN SPACING:	54' W x 55' D; 60' Speed Bay
SPRINKLERS:	ESFR
AUTO PARKING:	45
TRAILER PARKING:	17
ADDITIONAL FEATURES:	Clerestory Windows
SPEC OFFICE:	2,316 SF
LIGHTING:	LED's - 30' FC
LEVELERS:	3 - 40,000 lbs.





≡ **BLDG. 100 SPECS** ≡

<b>AVAILABLE SF:</b>	<b>46,160 SF</b>
<b>DIMENSIONS:</b>	<b>154' W x 300' D</b>
<b>CLEAR HEIGHT:</b>	<b>32'</b>
<b>DOCK HIGH DOORS:</b>	<b>9</b>
<b>DRIVE-IN DOORS:</b>	<b>1</b>
<b>COLUMN SPACING:</b>	<b>52' W x 48' D; 60' Speed Bay</b>
<b>SPRINKLERS:</b>	<b>ESFR</b>
<b>AUTO PARKING:</b>	<b>26</b>
<b>ADDITIONAL FEATURES:</b>	<b>Clerestory Windows</b>
<b>SPEC OFFICE:</b>	<b>2,076 SF</b>
<b>LIGHTING:</b>	<b>LED's - 30' FC</b>
<b>LEVELERS:</b>	<b>3 - 40,000 lbs.</b>



## BLDG. 200 SPECS

<b>AVAILABLE SF:</b>	<b>60,439 SF</b>
<b>DIMENSIONS:</b>	<b>216' W x 280' D</b>
<b>CLEAR HEIGHT:</b>	<b>32'</b>
<b>DOCK HIGH DOORS:</b>	<b>9</b>
<b>DRIVE-IN DOORS:</b>	<b>1</b>
<b>COLUMN SPACING:</b>	<b>54' W x 55' D; 60' Speed Bay</b>
<b>SPRINKLERS:</b>	<b>ESFR</b>
<b>AUTO PARKING:</b>	<b>45</b>
<b>TRAILER PARKING:</b>	<b>17</b>
<b>ADDITIONAL FEATURES:</b>	<b>Clerestory Windows</b>
<b>SPEC OFFICE:</b>	<b>2,316 SF</b>
<b>LIGHTING:</b>	<b>LED's - 30' FC</b>
<b>LEVELERS:</b>	<b>3 - 40,000 lbs.</b>

# NEWNAN 85 COMMERCE PARK

# AERIAL OVERVIEW



# NEWNAN 85 COMMERCE PARK

CONTACT:



DEVELOPMENT:  
**CROW  
HOLDINGS**  
INDUSTRIAL

LEASING:  
**WILSON  
HULL  
& NEAL**  
REAL ESTATE, LLC

**John Bateman**  
404.665.9997  
jbateman@crowholdings.com

**Joseph Rogers**  
404.550.0817  
jrogers@whnre.com

**Bilijack R. Bell**  
404.375.0444  
bbell@whnre.com

**Will Geraghty**  
404.831.2937  
wgeraghty@whnre.com

Every effort has been made to provide accurate information, but no liability is assumed for errors or omissions.