

For Sale

6 Lots at Mason Square Executive Center



Mason Square Executive Center

1008 - 1022 Douglas Rd.
Oswego, IL 60543

Property Features

- A combined 6 lots available for a new lower price
- Located near the intersection of Ogden Ave. (Route 34) and Douglas Rd.
- Nearby retail include:
 - Americinn Lodge & Suites
 - Scoreboard Sports Pub
 - Fruitful Yield
 - Rosati's Pizza
 - Culver's
 - Target
 - TJ Maxx
 - Lou Malnati's Pizza
 - IHOP
 - Portillo's
 - Party City
 - Meijer



Address	Bldg Size	Price	Condition
1008 Douglas Rd.	4,800 sf	SOLD	Shell
1012 Douglas Rd.	4,800 sf	SOLD	Shell
1016 Douglas Rd.	4,800 sf	SOLD	50% Shell / 50% Finished Office Space
1022 Douglas Rd.	6,600 sf	SOLD	Fully built-out
6 Lots		\$100,000 combined	

Contact:

Adam Johnson

+1 630 317 0729

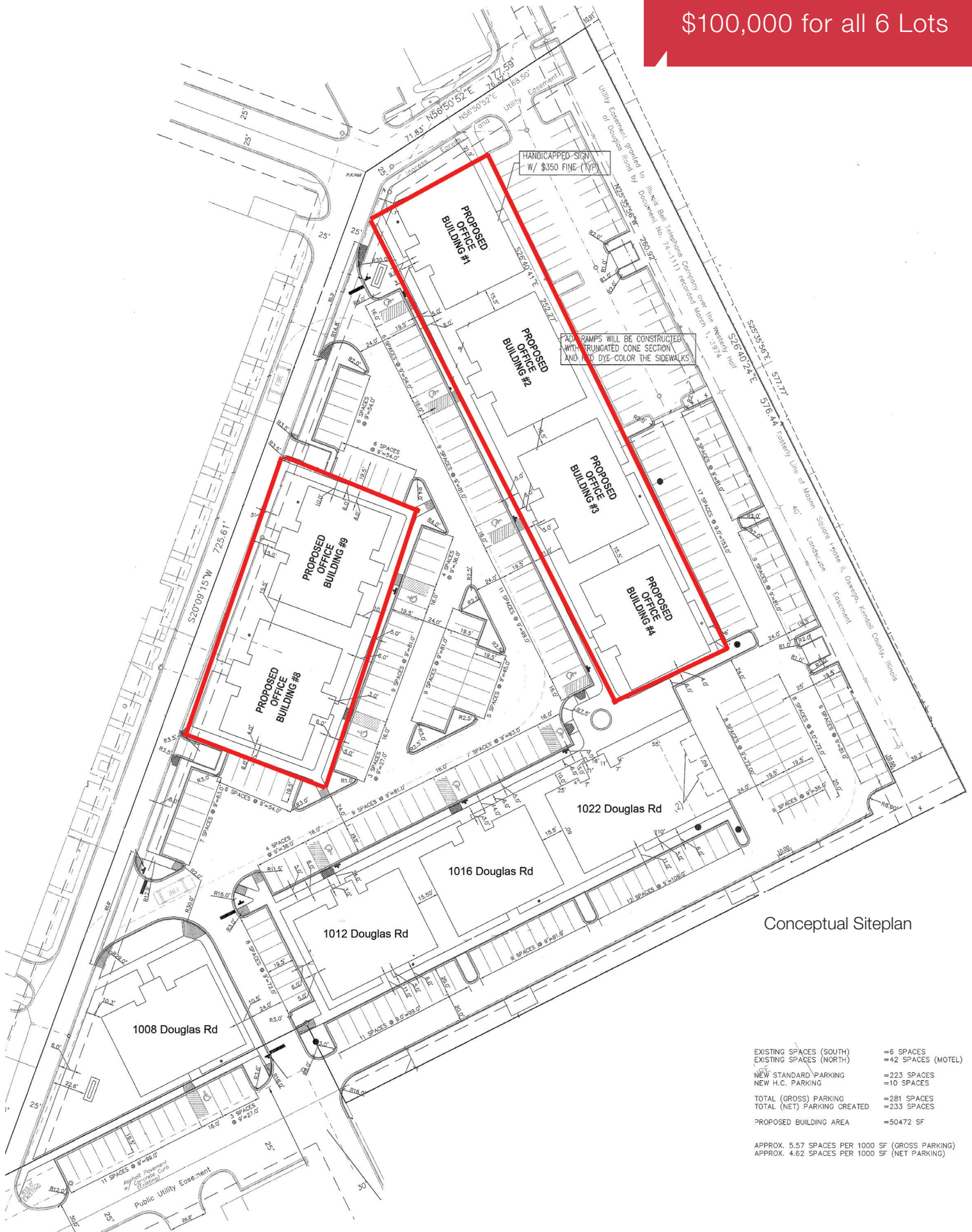
ajohnson@hiffman.com



One Oakbrook Terrace Suite 400
Oakbrook Terrace, Illinois 60181
+1 630 932 1234
hiffman.com

For Sale

\$100,000 for all 6 Lots



Conceptual Siteplan

EXISTING SPACES (SOUTH)	=6 SPACES
EXISTING SPACES (NORTH)	=42 SPACES (MOTEL)
NEW STANDARD PARKING	=223 SPACES
NEW H.C. PARKING	=10 SPACES
TOTAL (GROSS) PARKING	=281 SPACES
TOTAL (NET) PARKING CREATED	=233 SPACES
PROPOSED BUILDING AREA	=50472 SF