

1524 W 178TH ST. | GARDENA

AVAILABLE FOR LEASE



PROPERTY HIGHLIGHTS

- 4,424 SF Free Standing Bldg.
- 9,487 Square Foot Parcel of Land
- Fenced & Secured Parking
- 6 Parking Spaces (Verify)
- 2-Story Office with Floor to Ceiling Windows
- M1 Zoning – Ideal for Many Uses
- HO-3 Housing Overlay
- Great South Gardena Location
- Near Plenty of Amenities on 190th St. & Artesia Blvd.
- Minutes to 405/110/91 Freeways
- 2 Ground Level Loading Doors
- 3-Phase Power (Verify)



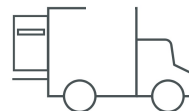
\$1.40/SF/Mo. Gross
No CAMs



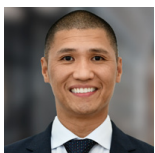
+/- 4,424 SF
Free Standing Blvd.



6 Parking Spaces
Fenced/Paved



2 Ground level Doors



ALBERT PACLEB

DRE # 01882342

(562)256-4684

AP@LACRES.com



John Ottinger

DRE # 01231956

(310)486-7071

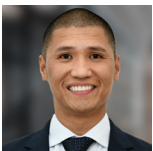
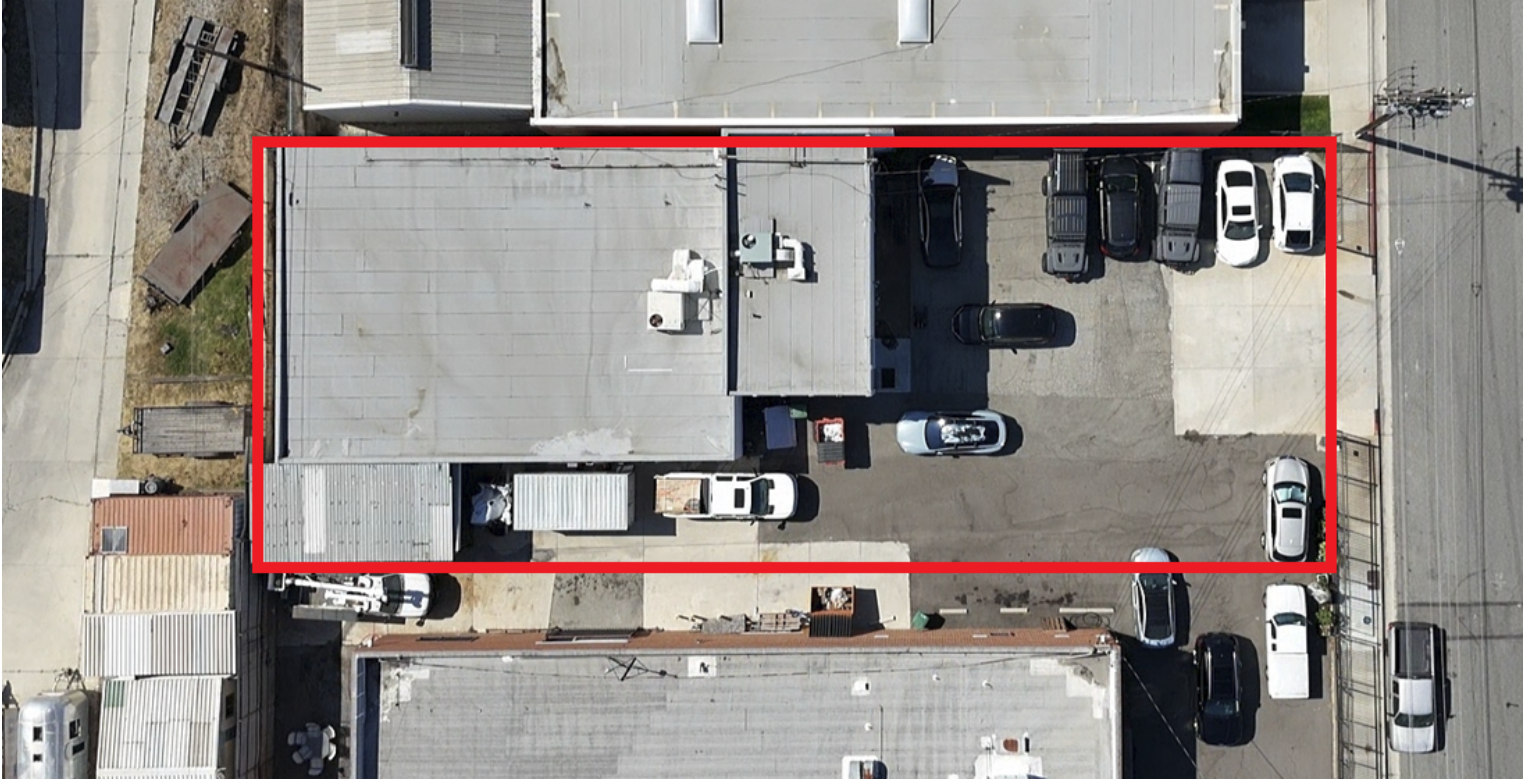
JO@LACRES.com

LACOMMERCIAL, INC.

627 Aviation Way
Manhattan Beach, CA 90266

1524 W 178TH ST. | GARDENA

AVAILABLE FOR LEASE



ALBERT PACLEB
DRE # 01882342
📞 (562)256-4684
✉️ AP@LACRES.com

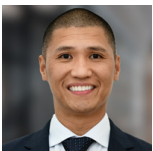


John Ottinger
DRE # 01231956
📞 (310)486-7071
✉️ JO@LACRES.com

LACOMMERCIAL, INC.
627 Aviation Way
Manhattan Beach, CA 90266

1524 W 178TH ST. | GARDENA

AVAILABLE FOR LEASE



ALBERT PACLEB
DRE # 01882342
☎ (562)256-4684
✉ AP@LACRES.com



John Ottinger
DRE # 01231956
☎ (310)486-7071
✉ JO@LACRES.com

LACOMMERCIAL, INC.
627 Aviation Way
Manhattan Beach, CA 90266