



Industrial Building for Lease

**600 NW LIBBY LANE
LEE'S SUMMIT, MISSOURI**



Property Highlights

- 15,600 sf building
- 5,000 sf of office space
- 4 drive-in doors total, (2) 10'x10' and (2) 12'x12'
- 14' ceiling clearance
- Outdoor fenced yard
- Located just west of Summit Technology Campus
- For lease at \$7.00/sf, NN

For information, please contact:

Mark C. Long, CRE, SIOR, CCIM, LEED

President and Chief Executive Officer

t 816-512-1011

mlong@nzimmer.com

Philip J. Botana

Associate Director

t 816-512-1008

pbotana@nzimmer.com

nrmkzimmer.com

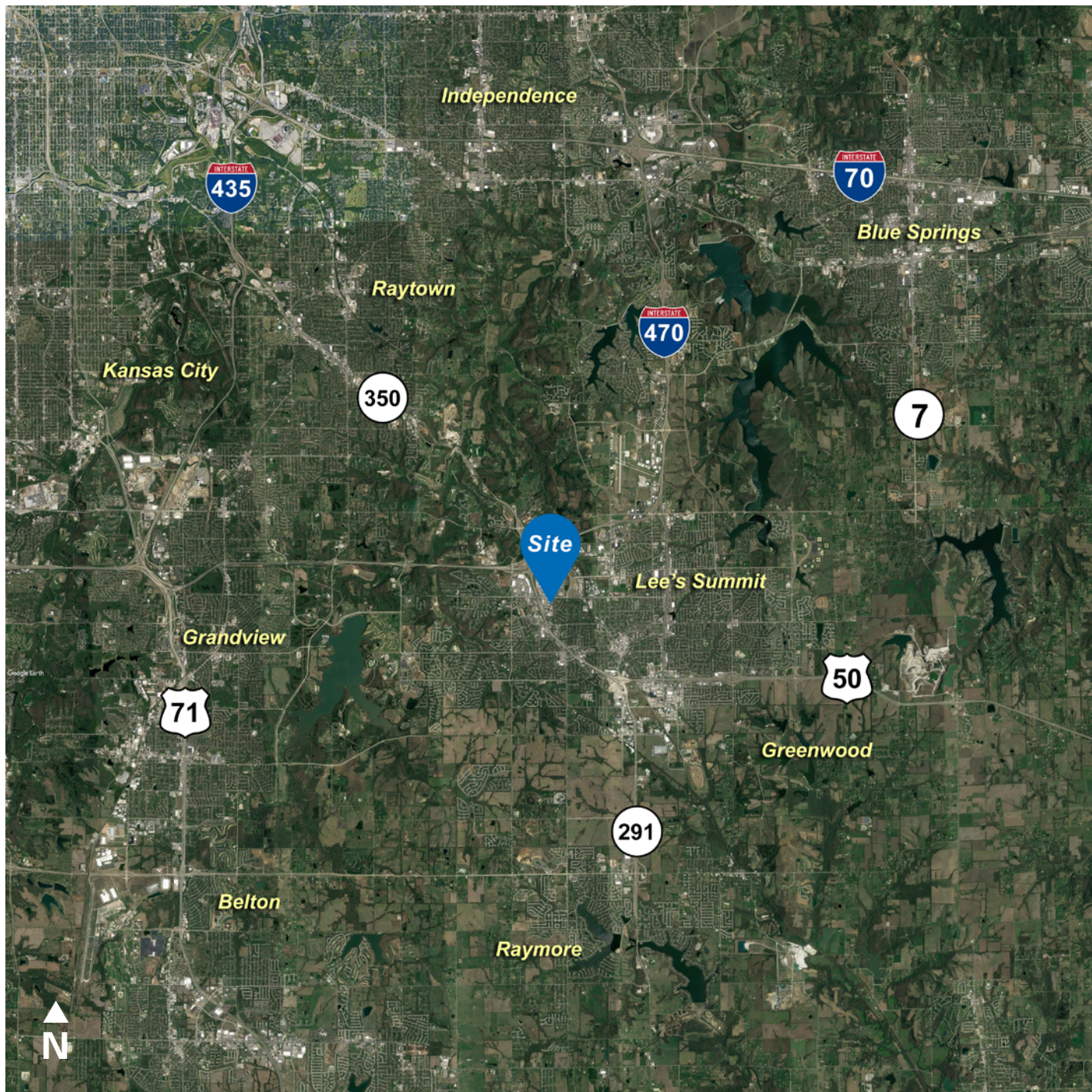
1220 Washington Street, Suite 300
Kansas City, MO 64105

NEWMARK
ZIMMER



The information contained herein has been obtained from sources deemed reliable but has not been verified and no guarantee, warranty or representation, either express or implied, is made with respect to such information. Terms of sale or lease and availability are subject to change or withdrawal without notice.

600 NW LIBBY LANE, LEE'S SUMMIT, MISSOURI



CONTACT

Mark C. Long, CRE, SIOR, CCIM, LEED

President and Chief Executive Officer

t 816-512-1011

mlong@nzimmer.com

nmrkzimmer.com

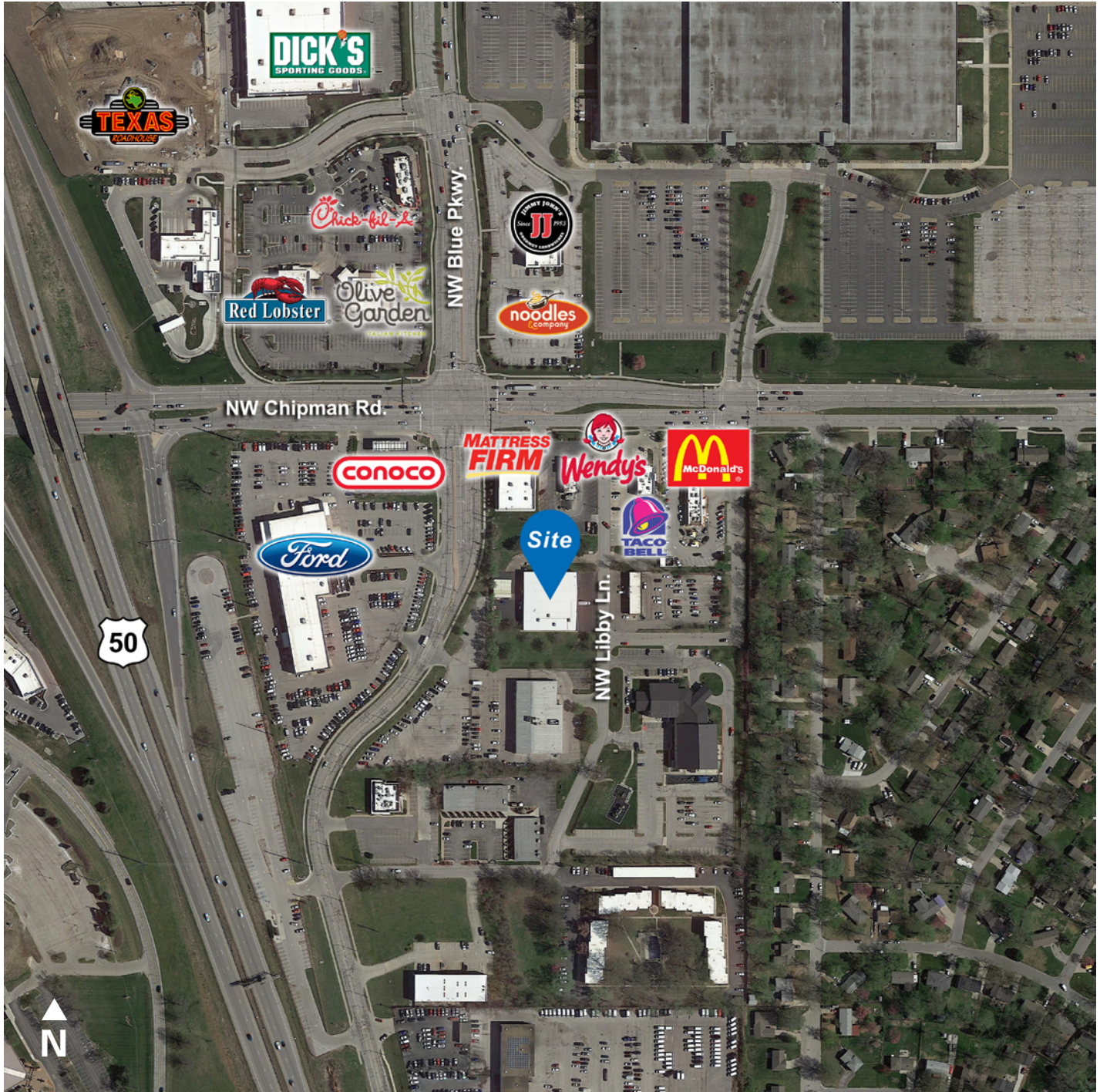
Philip J. Botana

Associate Director

t 816-512-1008

pbotana@nzimmer.com

600 NW LIBBY LANE, LEE'S SUMMIT, MISSOURI



CONTACT

Mark C. Long, CRE, SIOR, CCIM, LEED

President and Chief Executive Officer

t 816-512-1011

mlong@nzimmer.com

nmrkzimmer.com

Philip J. Botana

Associate Director

t 816-512-1008

pbotana@nzimmer.com

600 NW LIBBY LANE, LEE'S SUMMIT, MISSOURI



CONTACT

Mark C. Long, CRE, SIOR, CCIM, LEED

President and Chief Executive Officer

t 816-512-1011

mlong@nzimmer.com

nmrkzimmer.com

Philip J. Botana

Associate Director

t 816-512-1008

pbotana@nzimmer.com

NEWMARK
ZIMMER

600 NW LIBBY LANE, LEE'S SUMMIT, MISSOURI



CONTACT

Mark C. Long, CRE, SIOR, CCIM, LEED

President and Chief Executive Officer

t 816-512-1011

m-long@nzimmer.com

nmrkzimmer.com

Philip J. Botana

Associate Director

t 816-512-1008

p-botana@nzimmer.com

NEWMARK
ZIMMER