

# For Lease

1,400-14,123 SF OF RETAIL AVAILABLE  
5800 RED BUG LAKE RD, WINTER SPRINGS, FL 32708

1,400 - 14,123 SF RETAIL SPACE AVAILABLE

## Red Willow Plaza

WINTER SPRINGS, FL



### DESCRIPTION

Red Willow Plaza is a 93,625 SF Fresh Market-anchored neighborhood center in the heart of the Winter Springs/Oviedo submarkets. The center sits along a highly trafficked corridor with over 74,500 daily vehicles and benefits from strong surrounding demographics, including a population of nearly 243,000 within a 15-minute drivetime.

### PROPERTY OVERVIEW

SPACE AVAILABLE	1,400-14,123 SF
ASKING RATE	CALL FOR PRICING
GLA	93,625 SF

### HIGHLIGHTS

- There is a population of nearly 243,000 with average household incomes of over \$166,000 within a 15-minute drivetime
- Highly trafficked retail corridor with over 74,500 cars passing the site daily
- 38,500 AADT on Red Bug Lake Road
- 36,000 AADT on Tuskawilla Road

CO-TENANTS  
INCLUDE:



FOR MORE INFORMATION, PLEASE CONTACT:

**Rebekah Marrero**  
407.863.2968  
Senior Associate  
Rebekah@AtriumCommercial.com

**JP Beaulieu, CCIM, CLS**  
407.863.2966  
Principal  
JP@AtriumCommercial.com

**ATRIUM** | COMMERCIAL  
REAL ESTATE  
ATRIUMCOMMERCIAL.COM

The information contained herein has been provided by sources believed to be reliable, however Atrium Commercial Real Estate makes no representation, expressed or implied, as to its accuracy and said information is subject to errors, omissions, or changes.



1,400-14,123 SF OF RETAIL AVAILABLE

RED WILLOW PLAZA | 5800 RED BUG LAKE RD, WINTER SPRINGS, FL 32708

## SITE PLAN



Suite	Tenant	SF
5800-5804	Sherwin Williams	4,971 SF
5808	Papa John's	1,800 SF
5812	USA Cabinet Sales	3,608 SF
5820	Carrabba's Italian Grill	8,915 SF
5840	Mail Copy Plus	1,520 SF
5844	R3 Anti Aging	2,549 SF
5848	Five Guys	2,520 SF
5856	Wild Birds Unlimited	1,575 SF
5860	Wingstop	1,449 SF

Suite	Tenant	SF
5864	Banfield Pet Hospital	3,500 SF
5872	Pigtails & Crewcuts	1,200 SF
5876	GLO Hair Lounge	1,500 SF
<b>5880</b>	<b>AVAILABLE</b>	<b>2,475 SF</b>
5888	Dyan Nails and Spa	1,688 SF
5892	Tsaocca Boba Tea	1,688 SF
<b>5896</b>	<b>AVAILABLE</b>	<b>1,400-2,880</b>
5904	D'Tails Pet Boutique & Spa	1,260 SF
5908	Dentists of Winter Springs	3,326 SF

Suite	Tenant	SF
<b>5916</b>	<b>AVAILABLE</b>	<b>14,123 SF</b>
5920	The Fresh Market	21,000 SF
5930	Cava	2,664 SF
5938	AT&T	1,510 SF
5942	Winter Springs Pharmacy	1,496 SF
5946	UBreakiFix	1,496 SF
5950	Jimmy John's	2,210 SF

FOR MORE INFORMATION, PLEASE CONTACT:

**Rebekah Marrero**  
407.863.2968  
Senior Associate  
Rebekah@AtriumCommercial.com

**JP Beaulieu, CCIM, CLS**  
407.863.2966  
Principal  
JP@AtriumCommercial.com

**ATRIUM** | COMMERCIAL  
REAL ESTATE  
**ATRIUMCOMMERCIAL.COM**

The information contained herein has been provided by sources believed to be reliable, however Atrium Commercial Real Estate makes no representation, expressed or implied, as to its accuracy and said information is subject to errors, omissions, or changes.





1,400-14,123 SF OF RETAIL AVAILABLE

RED WILLOW PLAZA | 5800 RED BUG LAKE RD, WINTER SPRINGS, FL 32708



FOR MORE INFORMATION, PLEASE CONTACT:

**Rebekah Marrero**  
407.863.2968  
Senior Associate  
Rebekah@AtriumCommercial.com

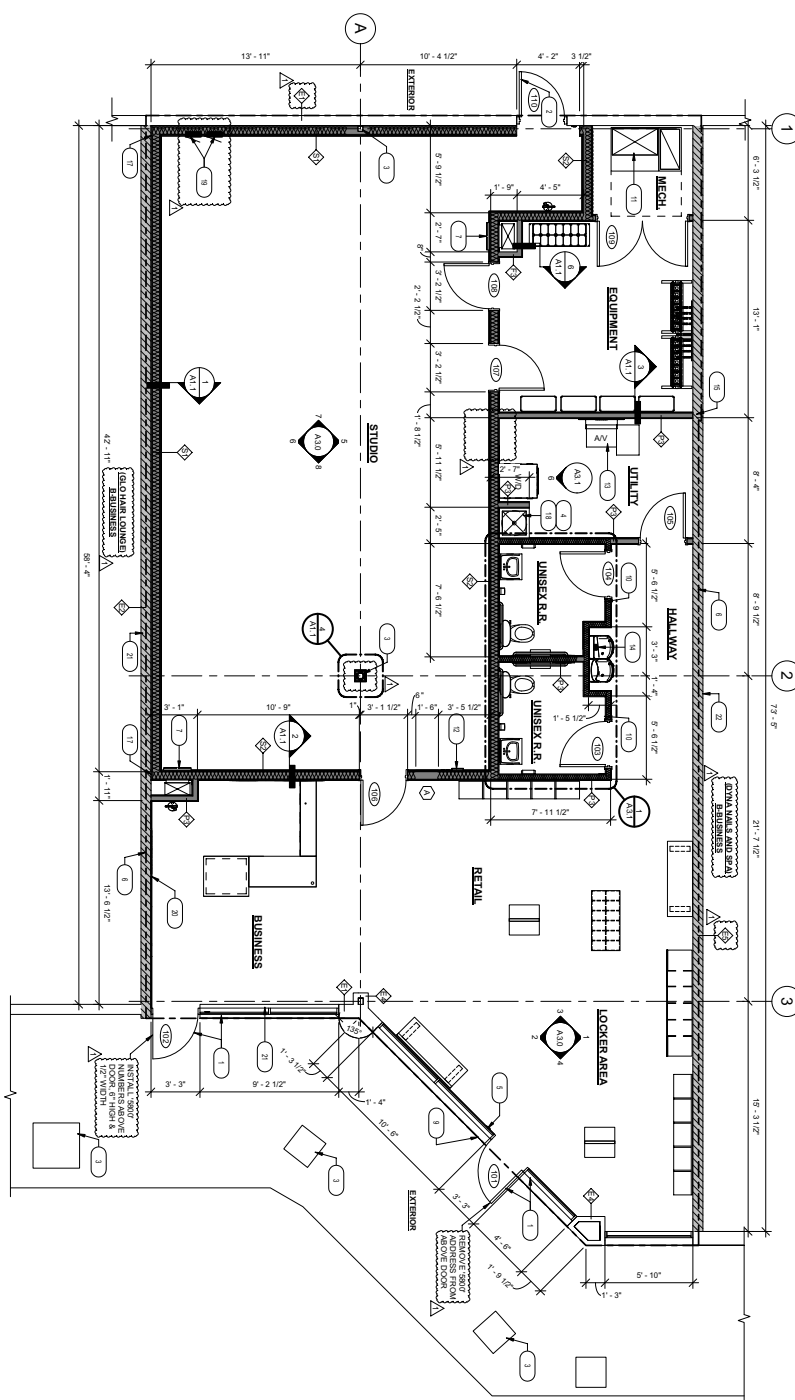
**JP Beaulieu, CCIM, CLS**  
407.863.2966  
Principal  
JP@AtriumCommercial.com

**ATRIUM** | COMMERCIAL  
REAL ESTATE  
**ATRIUMCOMMERCIAL.COM**

The information contained herein has been provided by sources believed to be reliable, however Atrium Commercial Real Estate makes no representation, expressed or implied, as to its accuracy and said information is subject to errors, omissions, or changes.



**LOD: SUITE 5880**



**Rebekah Marrero**  
**407.863.2968**  
 Senior Associate  
 Rebekah@AtriumCommercial.com

**JP Beaulieu, CCIM, CLS**  
**407.863.2966**  
Principal  
JP@AtriumCommercial.com

**ATRIUM** | COMMERCIAL  
REAL ESTATE  
**ATRIUMCOMMERCIAL.COM**

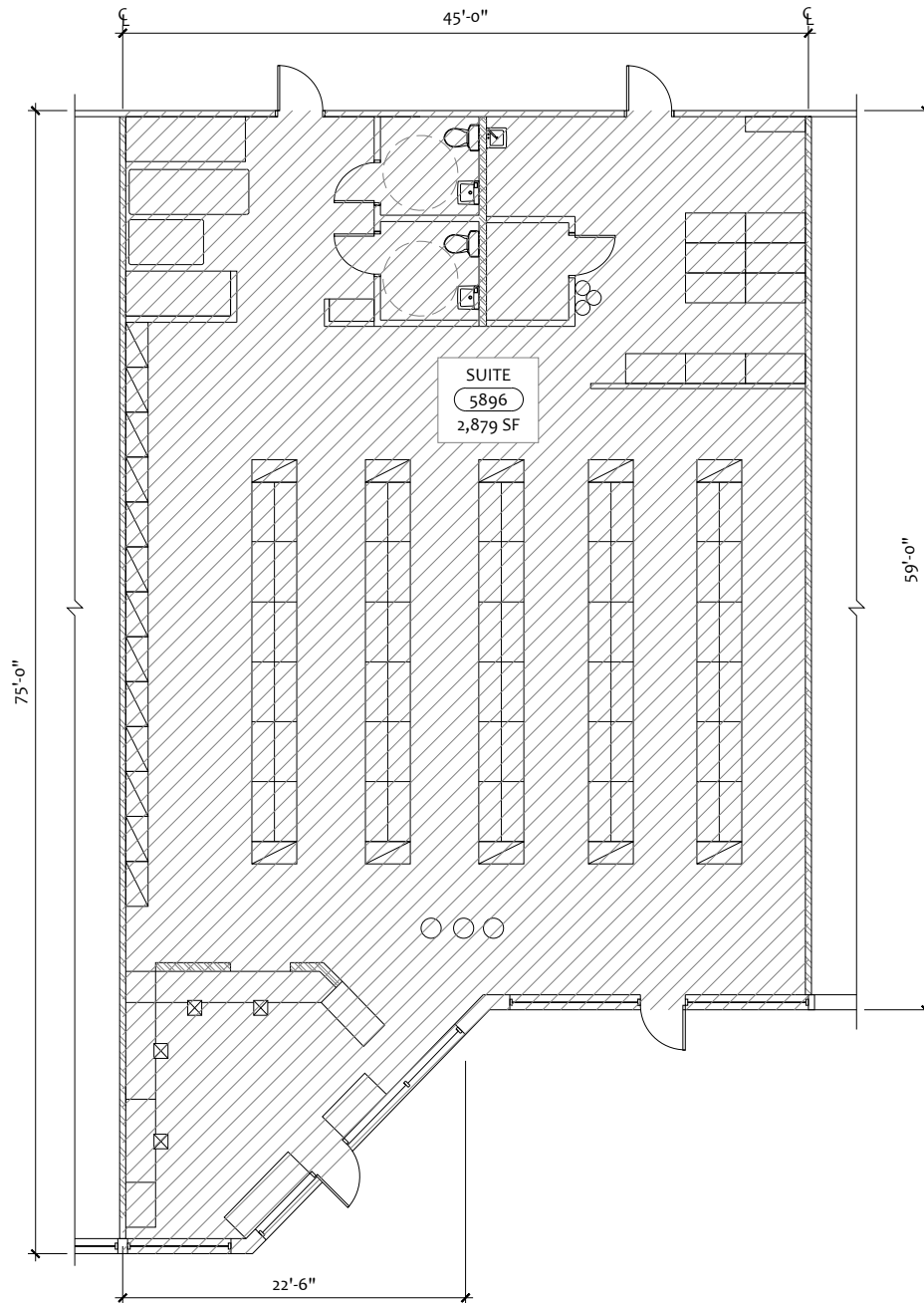
The information contained herein has been provided by sources believed to be reliable, however Atrium Commercial Real Estate makes no representation, expressed or implied, as to its accuracy and said information is subject to errors, omissions, or changes.



1,400-14,123 SF OF RETAIL AVAILABLE

RED WILLOW PLAZA | 5800 RED BUG LAKE RD, WINTER SPRINGS, FL 32708

## LOD: SUITE 5896



FOR MORE INFORMATION, PLEASE CONTACT:

**Rebekah Marrero**  
407.863.2968  
Senior Associate  
Rebekah@AtriumCommercial.com

**JP Beaulieu, CCIM, CLS**  
407.863.2966  
Principal  
JP@AtriumCommercial.com

**ATRIUM** | COMMERCIAL  
REAL ESTATE

**ATRIUMCOMMERCIAL.COM**

The information contained herein has been provided by sources believed to be reliable, however Atrium Commercial Real Estate makes no representation, expressed or implied, as to its accuracy and said information is subject to errors, omissions, or changes.

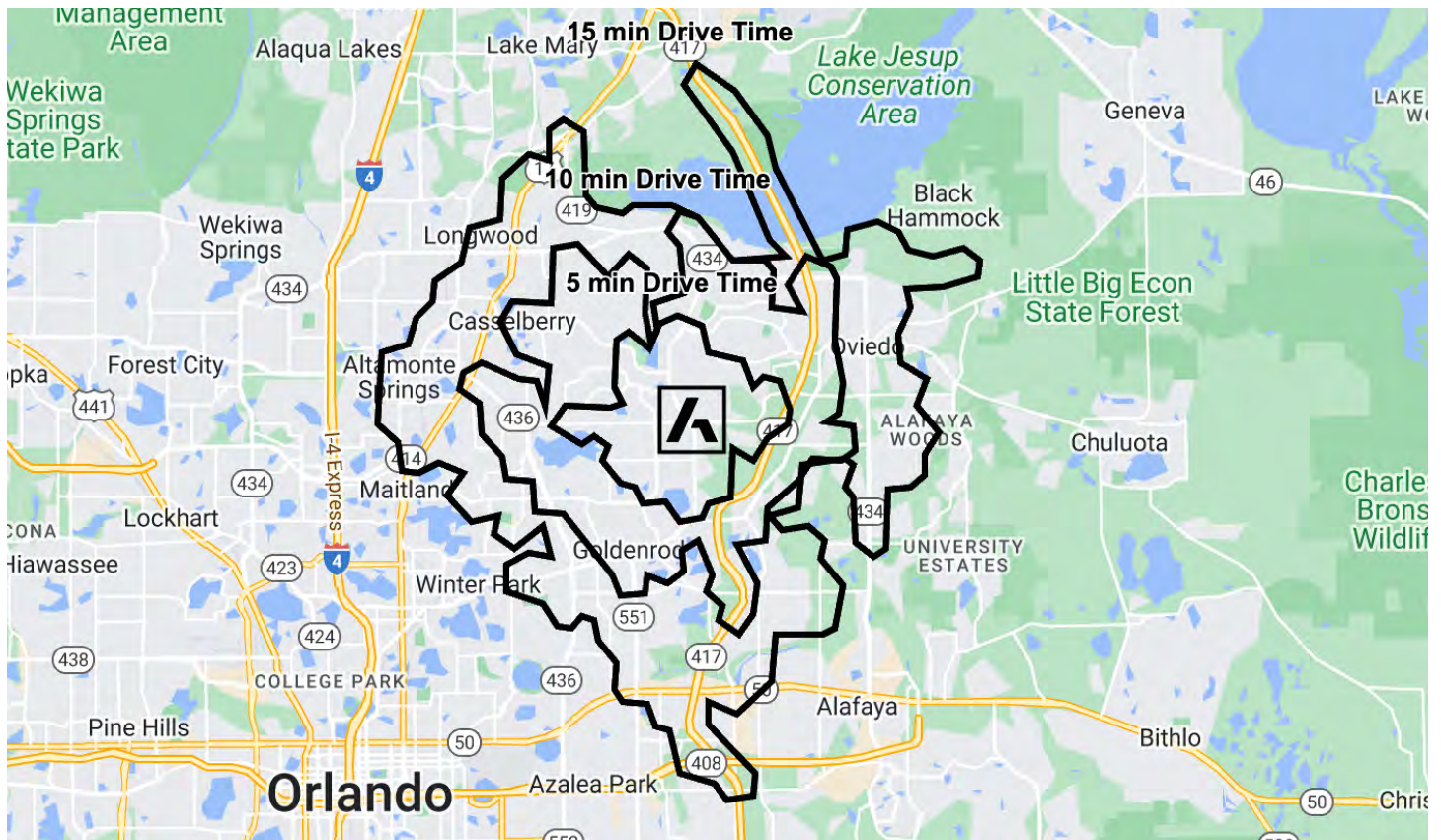




1,400–14,123 SF OF RETAIL AVAILABLE

RED WILLOW PLAZA | 5800 RED BUG LAKE RD, WINTER SPRINGS, FL 32708

## DRIVE TIMES & DEMOGRAPHICS



### 5-MINUTE DRIVE TIME



28,333

ESTIMATED POPULATION



10,955

HOUSEHOLDS



9,802

TOTAL EMPLOYEES



\$135,990

AVERAGE HOUSEHOLD INCOME

### 10-MINUTE DRIVE TIME



107,466

ESTIMATED POPULATION



44,126

HOUSEHOLDS



35,297

TOTAL EMPLOYEES



\$120,992

AVERAGE HOUSEHOLD INCOME

### 15-MINUTE DRIVE TIME



242,795

ESTIMATED POPULATION



99,456

HOUSEHOLDS



95,219

TOTAL EMPLOYEES



\$116,346

AVERAGE HOUSEHOLD INCOME

FOR MORE INFORMATION, PLEASE CONTACT:

**Rebekah Marrero**

407.863.2968

Senior Associate

Rebekah@AtriumCommercial.com

**JP Beaulieu, CCIM, CLS**

407.863.2966

Principal

JP@AtriumCommercial.com

**ATRIUM** | COMMERCIAL  
REAL ESTATE

**ATRIUMCOMMERCIAL.COM**

The information contained herein has been provided by sources believed to be reliable, however Atrium Commercial Real Estate makes no representation, expressed or implied, as to its accuracy and said information is subject to errors, omissions, or changes.





1,400-14,123 SF OF RETAIL AVAILABLE

RED WILLOW PLAZA | 5800 RED BUG LAKE RD, WINTER SPRINGS, FL 32708

## KEY POINTS



**10,500 AADT**  
DODD RD

**38,500 AADT**  
RED BUG LAKE RD

**36,000 AADT**  
TUSKAWILLA RD

FOR MORE INFORMATION, PLEASE CONTACT:

**Rebekah Marrero**  
407.863.2968  
Senior Associate  
Rebekah@AtriumCommercial.com

**JP Beaulieu, CCIM, CLS**  
407.863.2966  
Principal  
JP@AtriumCommercial.com

**ATRIUM** | COMMERCIAL  
REAL ESTATE

**ATRIUMCOMMERCIAL.COM**

The information contained herein has been provided by sources believed to be reliable, however Atrium Commercial Real Estate makes no representation, expressed or implied, as to its accuracy and said information is subject to errors, omissions, or changes.