

4253 W. Grand Avenue, Chicago, IL

± 12,000 SF FOR SALE



SPECIFICATIONS

AVAILABLE SIZE: 12,000 SF

LAND AREA: 18,000 SF

OFFICE SIZE: 500 SF

CONSTRUCTION: Masonry

YEAR BUILT: 1950's

CEILING HEIGHT: 14' Clear

POWER: 400 Amps

LOADING: 3 Drive-In Doors

HEATING: Gas Forced Air

ZONING: C1-1

SALE PRICE: \$995,000

- Hard to find clearspan building
- Secure outside storage yard
- Previously used as a school bus depot

Contact:

Jeff Locascio, SIOR
708-705-3857
jeff@industrialbroker.net

Chris Wilbur
708-860-8589
cwilbur@entreccommercial.com



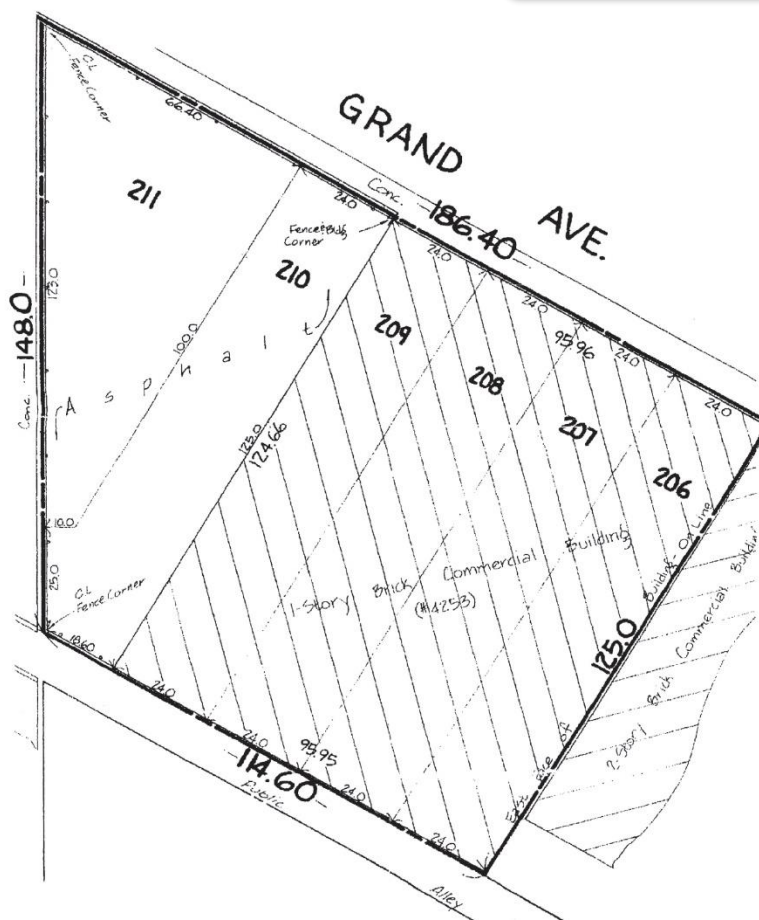
www.entreccommercial.com

3550 Salt Creek Lane, Suite 104, Arlington Heights, IL. 60005

ENTRE
Commercial Realty LLC

4253 W. Grand Avenue, Chicago, IL

± 12,000 SF FOR SALE



Contact:

Jeff Locascio, SIOR
 708-705-3857
 jeff@industrialbroker.net

Chris Wilbur
 708-860-8589
 cwilbur@entrecommercial.com

www.entrecommercial.com

3550 Salt Creek Lane, Suite 104, Arlington Heights, IL. 60005



4253 W. Grand Avenue, Chicago, IL

± 12,000 SF FOR SALE



Contact:

Jeff Locascio, SIOR
 708-705-3857
 jeff@industrialbroker.net

Chris Wilbur
 708-860-8589
 cwilbur@entrecmercial.com

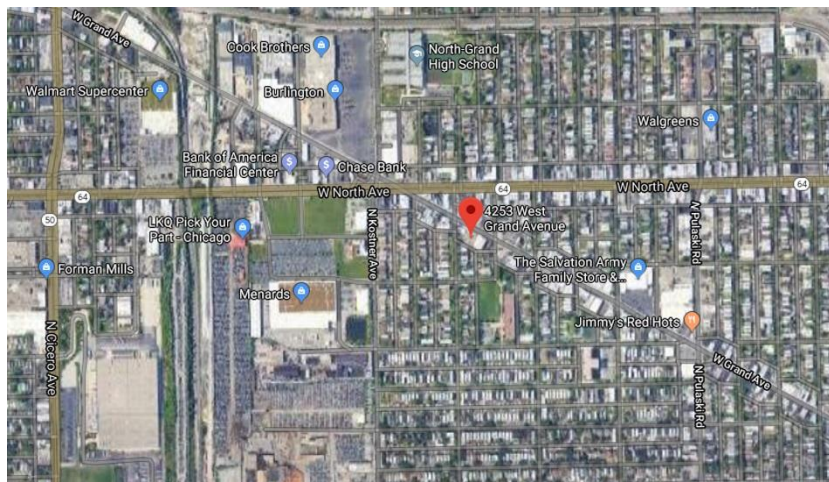
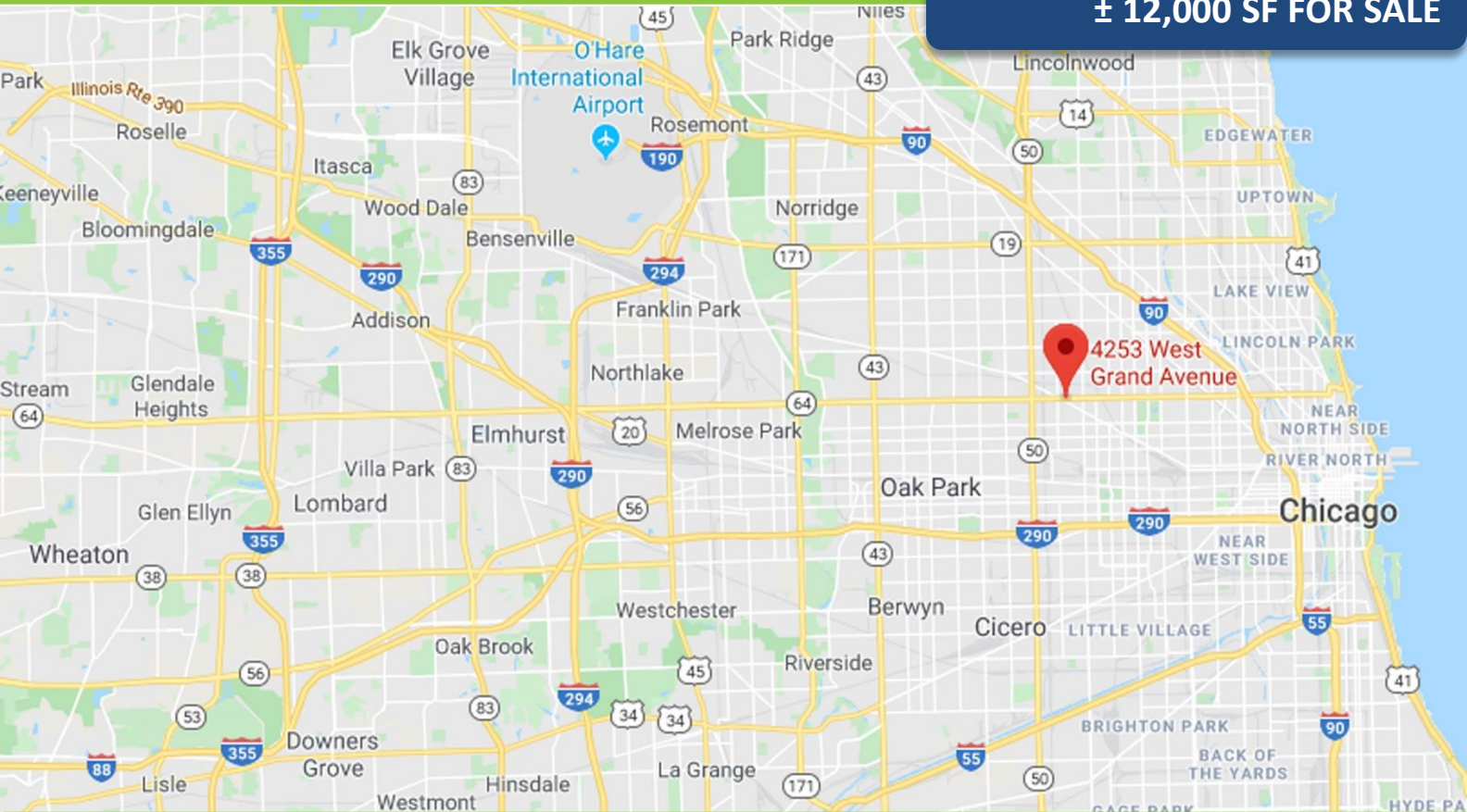
www.entrecmercial.com

3550 Salt Creek Lane, Suite 104, Arlington Heights, IL. 60005



4253 W. Grand Avenue, Chicago, IL

± 12,000 SF FOR SALE

**Contact:**

Jeff Locascio, SIOR
708-705-3857
jeff@industrialbroker.net

Chris Wilbur
708-860-8589
cwilbur@entcommercial.com

www.entcommercial.com

3550 Salt Creek Lane, Suite 104, Arlington Heights, IL. 60005

ENTRE
Commercial Realty LLC