



**OFFICE  
INDUSTRIAL  
RETAIL TEAM**

By Jake Levinson

*Outside the box.*

# 2180 FOR LEASE

# BRYANT ST



**JAKE LEVINSON**

MANAGING DIRECTOR  
(415) 786-4303  
JAKE@GROUNDMATRIX.COM

**HANNAH REUBENS**

ASSOCIATE  
(415) 299-3371  
HANNAH@GROUNDMATRIX.COM

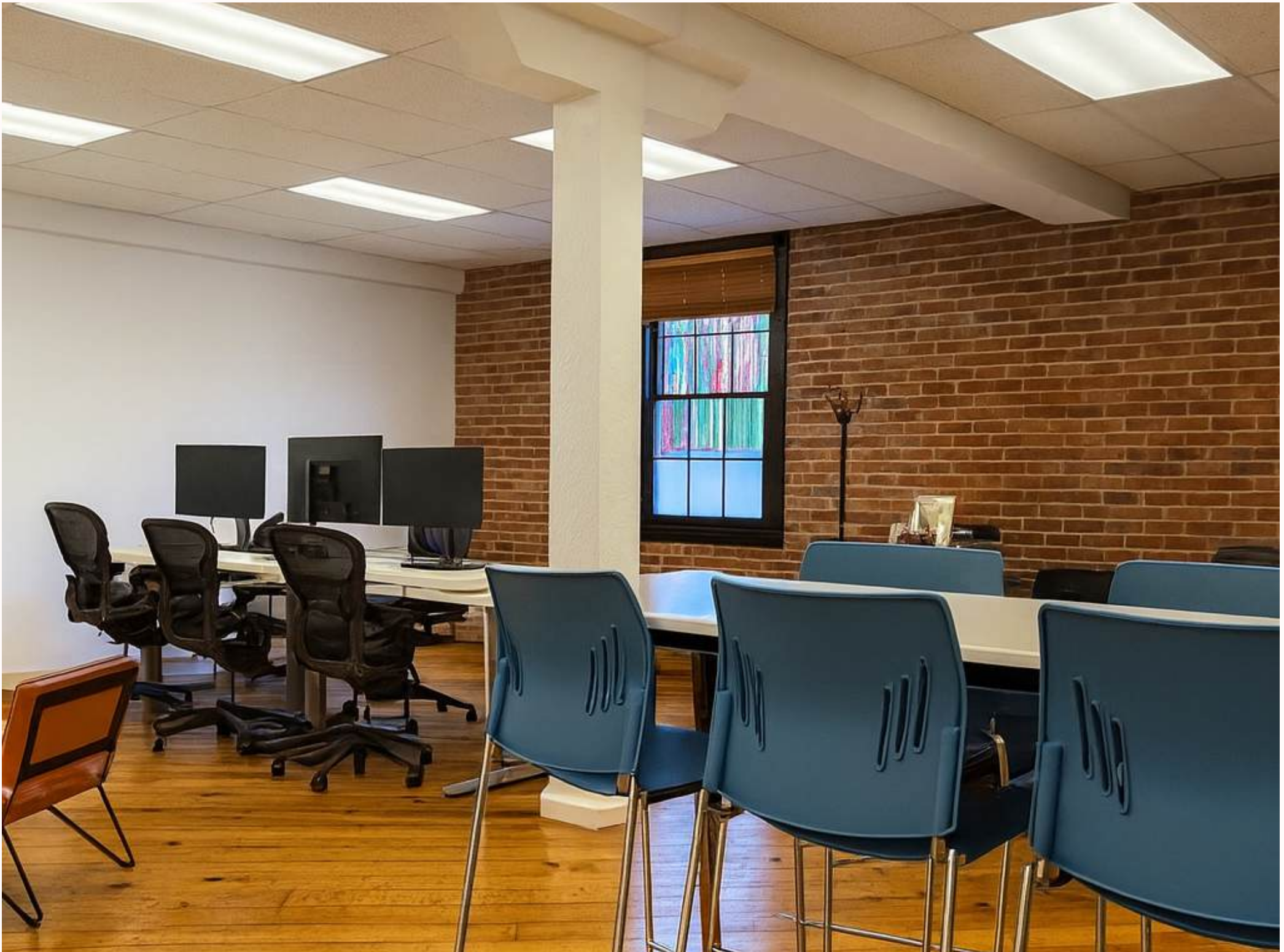


- **\$6,550/ MO**
- **±1,300 SF OFFICE SUITE**
- **CONFERENCE ROOM**
- **KITCHEN**
- **TWO PHONE BOOTHS**



**JAKE LEVINSON**  
MANAGING DIRECTOR  
(415) 786-4303  
JAKE@GROUNDMATRIX.COM

**HANNAH REUBENS**  
ASSOCIATE  
(415) 299-3371  
HANNAH@GROUNDMATRIX.COM



**JAKE LEVINSON**  
MANAGING DIRECTOR  
(415) 786-4303  
JAKE@GROUNDMATRIX.COM

**HANNAH REUBENS**  
ASSOCIATE  
(415) 299-3371  
HANNAH@GROUNDMATRIX.COM

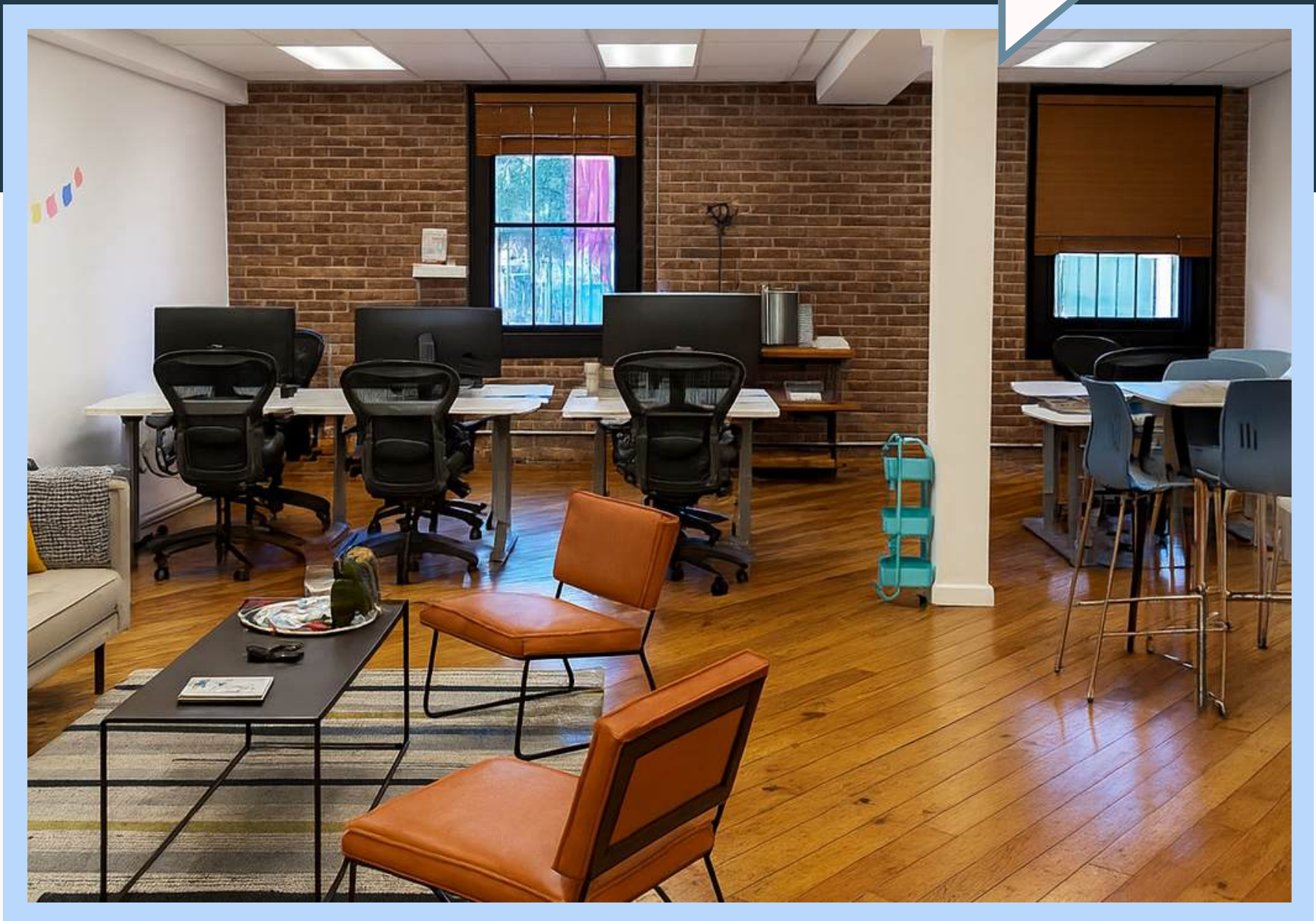


Outside the box.

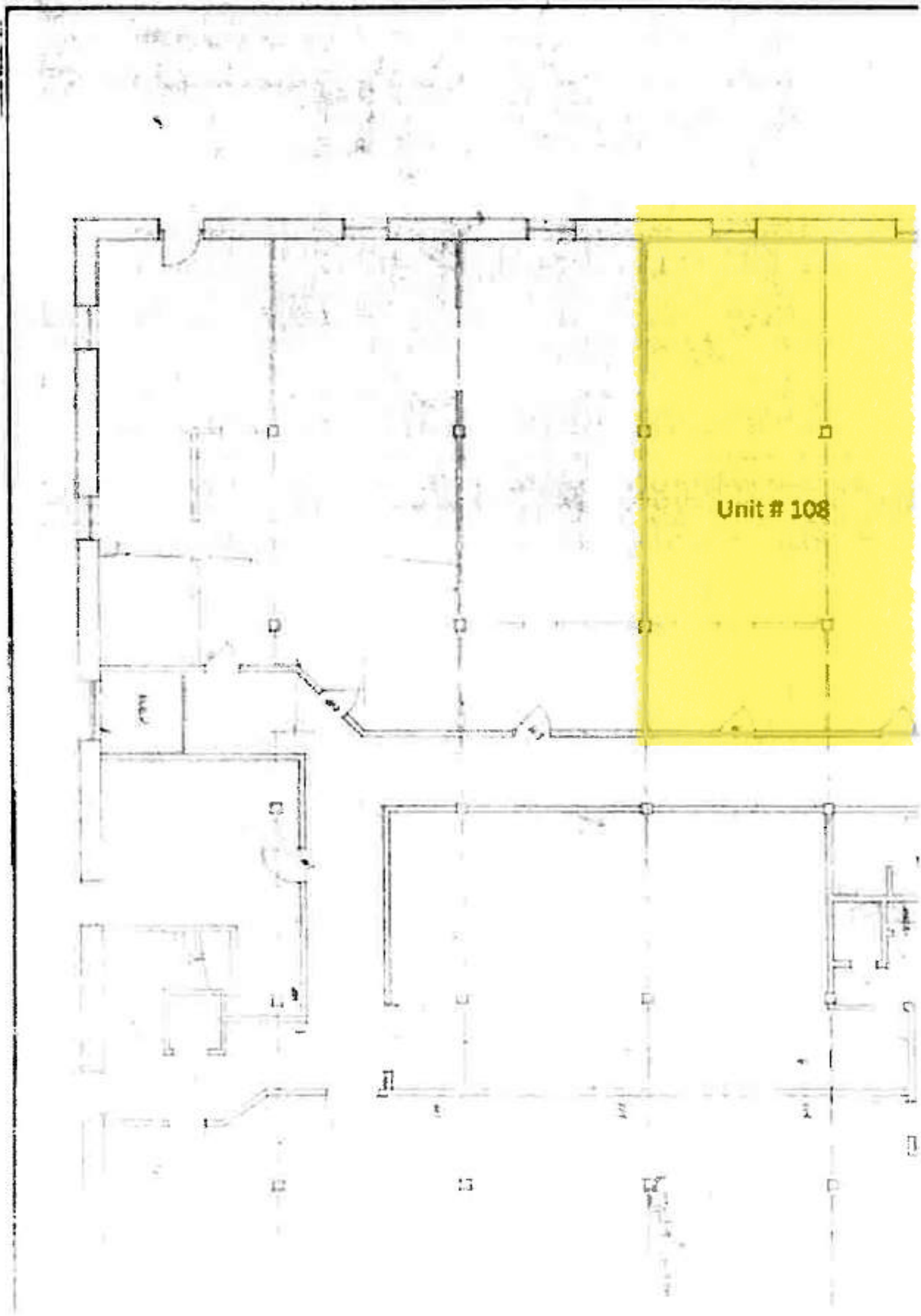
- **Conference room**
- **Kitchen**
- **Two phone booths**
- **Furnished or unfurnished**
- **Prime location**



\$6,550/mo



2180 Bryant St, Suite #108 | Mission District



JAKE LEVINSON

MANAGING DIRECTOR  
(415) 786-4303  
JAKE@GROUNDMATRIX.COM

HANNAH REUBENS

ASSOCIATE  
(415) 299-3371  
HANNAH@GROUNDMATRIX.COM



Outside the box.

# 2180

## FOR LEASE

# BRYANT ST



## CONTACT US:

**JAKE LEVINSON**

**(415) 786-4303**

**JAKE@GROUNDMATRIX.COM**

**HANNAH REUBENS**

**(415) 299-3371**

**HANNAH@GROUNDMATRIX.COM**