

For Lease

Enterprise 1 & 2

2700-2785 & 2800-2888
E Kemper Road
Sharonville, OH 45241

- Excellent visibility from Interstate 275 & Kemper Road
- Close to area amenities
- OPEX: \$3.50 - \$3.69/SF



Erin Casey, SIOR
Senior Vice President
+1 513 562 2225
erin.casey@colliers.com

John Gartner, III, SIOR
Executive Vice President
+1 513 562 2207
john.gartner@colliers.com

Andrew Jacob
Senior Associate
+1 513 562 2254
andrew.jacob@colliers.com

425 Walnut Street, Ste 1200
Cincinnati, OH 45202
+1 513 721 4200

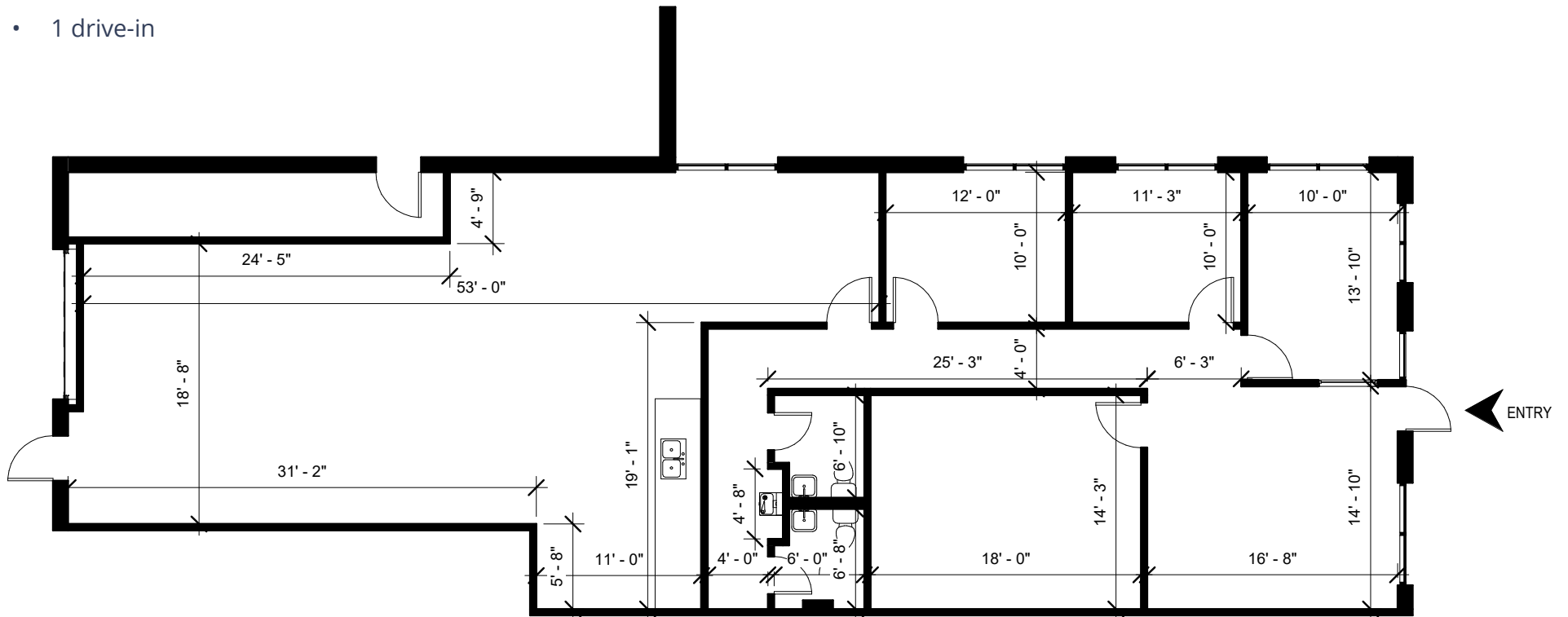
Colliers

Available

Colliers

Suite 2700

- 2,428 SF total available
- 1,700 SF office
- 728 SF warehouse
- 1 drive-in

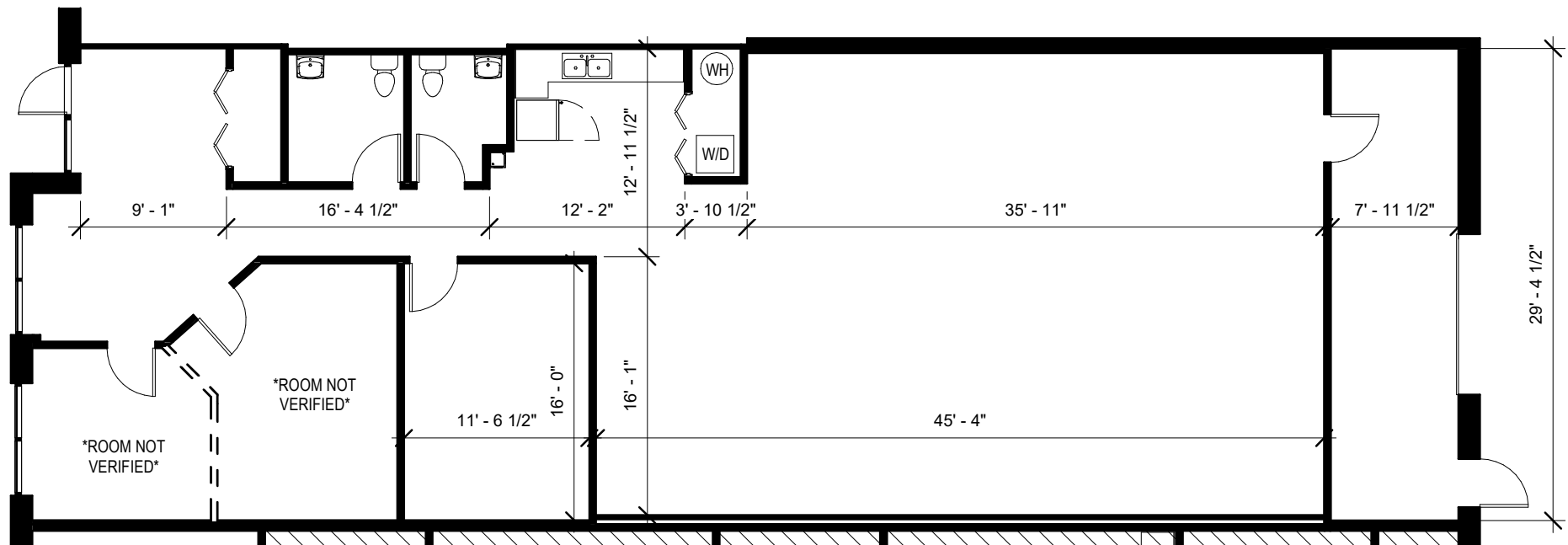


Available

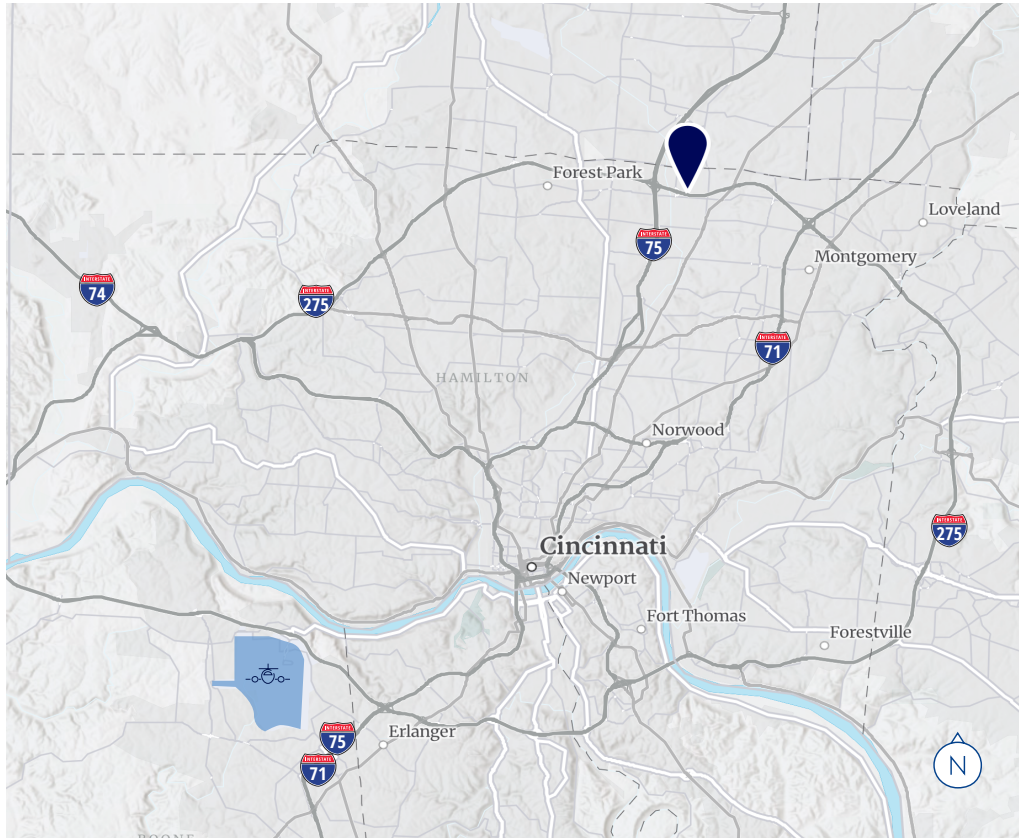
Colliers

Suite 2820

- 2,700 SF total available
- 2,470 SF office
- 230 SF warehouse
- 1 drive-in



LOCATION



ESTIMATED DEMOGRAPHICS



Income Projection
\$149,580



Household Income
\$120,947



Population
145,234



Population Projection
147,098



Vacancy Rate
5.7%



Unemployment Rate
2.7%

CONTACT US

Erin Casey, SIOR
Senior Vice President
+1 513 562 2225
erin.casey@colliers.com

John Gartner, III, SIOR
Executive Vice President
+1 513 562 2207
john.gartner@colliers.com

Andrew Jacob
Senior Associate
+1 513 562 2254
andrew.jacob@colliers.com

425 Walnut Street, Ste 1200
Cincinnati, OH 45202
+1 513 721 4200



This document/email has been prepared by Colliers for advertising and general information only. Colliers makes no guarantees, representations or warranties of any kind, expressed or implied, regarding the information including, but not limited to, warranties of content, accuracy and reliability. Any interested party should undertake their own inquiries as to the accuracy of the information. Colliers excludes unequivocally all inferred or implied terms, conditions and warranties arising out of this document and excludes all liability for loss and damages arising there from. This publication is the copyrighted property of Colliers and /or its licensor(s). © 2026. All rights reserved. This communication is not intended to cause or induce breach of an existing listing agreement.