

# RELIGIOUS PROPERTY FOR SALE

5201 DAVIS BLVD, NORTH RICHLAND HILLS, TX 76180

## DESCRIPTION

With 15,090± total SF sitting on 3.12± acres of land, the property consists of one permanent structure built in 1975. The facility consists of a sanctuary with a seating capacity of 250±, administrative and staff offices, multiple educational/multi-purpose rooms, a kitchen, and a fellowship hall.

- **Reduced Price | ~~\$1,975,000~~ \$1,795,000**
- Approximately 95 paved parking spots on site
- Zoning: C-2 | Commercial
- Permitted uses include, but are not limited to, religious uses, colleges and universities, day care centers, medical clinics, schools, and other retail-oriented uses



FOR MORE INFORMATION, PLEASE CONTACT:

**CHRIS BURY | 949.939.6238**  
 Broker, Partner  
[chris.bury@foundrycommercial.com](mailto:chris.bury@foundrycommercial.com)  
 Licensed Real Estate Broker

**BRIAN BROOKS | 214.996.9818**  
 Senior Vice President  
[brian.brooks@foundrycommercial.com](mailto:brian.brooks@foundrycommercial.com)  
 Licensed Real Estate Broker

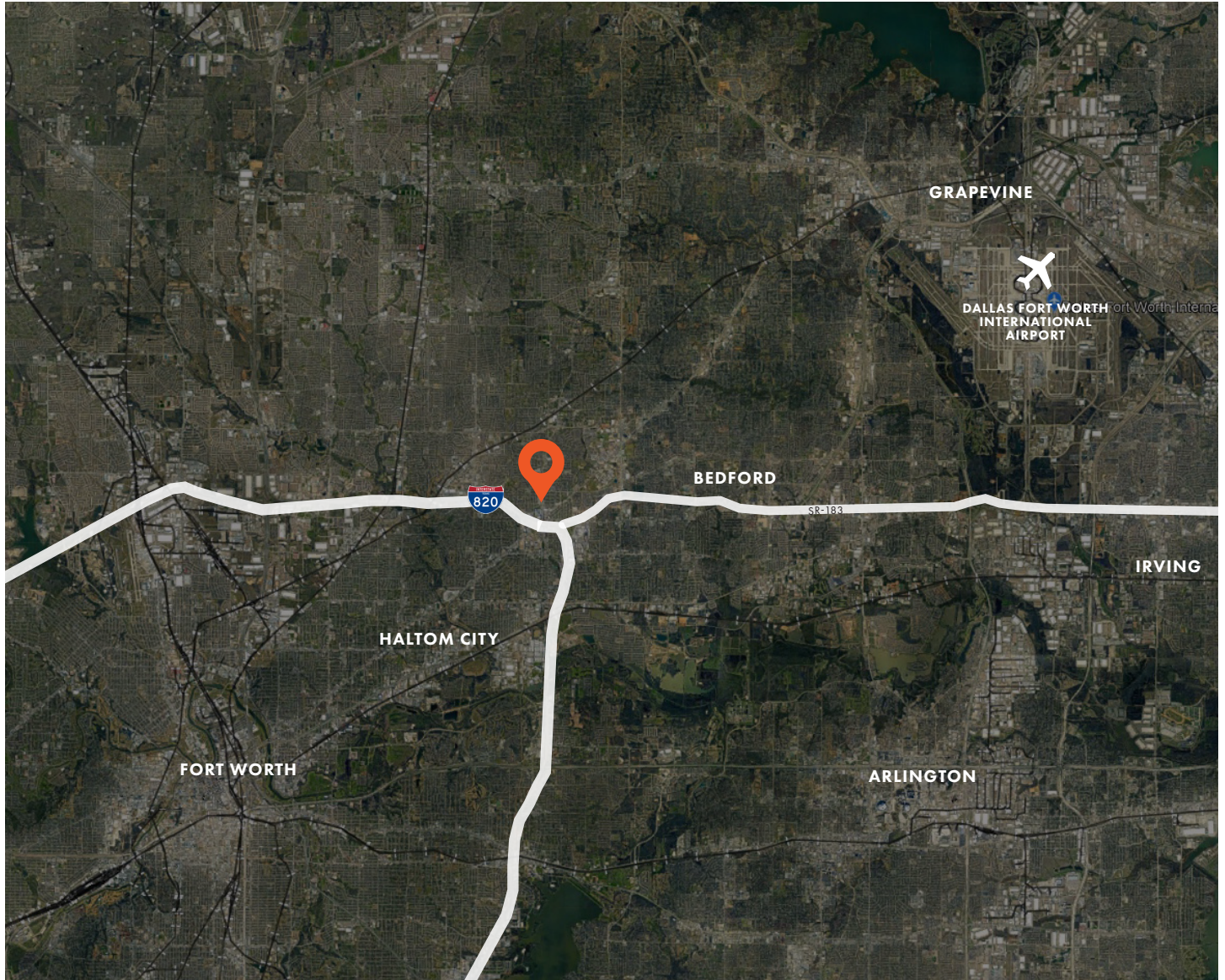
**FOUNDRY**  
 COMMERCIAL

MISSION  
 PROPERTY  
 GROUP

Although the information contained herein was provided by sources believed to be reliable, Foundry Commercial makes no representation, expressed or implied, as to its accuracy and said information is subject to errors, omissions or changes.

[foundrycommercial.com](http://foundrycommercial.com)

## AREA MAP



## LOCATION

The subject property is located in North Richland Hills, located in close proximity to North East Mall and Richland High School. Surrounding the property is single family residential, with some light commercial to the south. This location has good access to major thoroughfares in the area, as well as lots of retail properties and schools. Dallas Fort Worth International Airport is approximately 13 miles from the property.

FOR MORE INFORMATION, PLEASE CONTACT:

**CHRIS BURY | 949.939.6238**  
Broker, Partner  
chris.bury@foundrycommercial.com  
Licensed Real Estate Broker

**BRIAN BROOKS | 214.996.9818**  
Senior Vice President  
brian.brooks@foundrycommercial.com  
Licensed Real Estate Broker

**FOUNDRY**  
COMMERCIAL

MISSION  
PROPERTY  
GROUP

Although the information contained herein was provided by sources believed to be reliable, Foundry Commercial makes no representation, expressed or implied, as to its accuracy and said information is subject to errors, omissions or changes.

[foundrycommercial.com](http://foundrycommercial.com)

**PHOTOS**



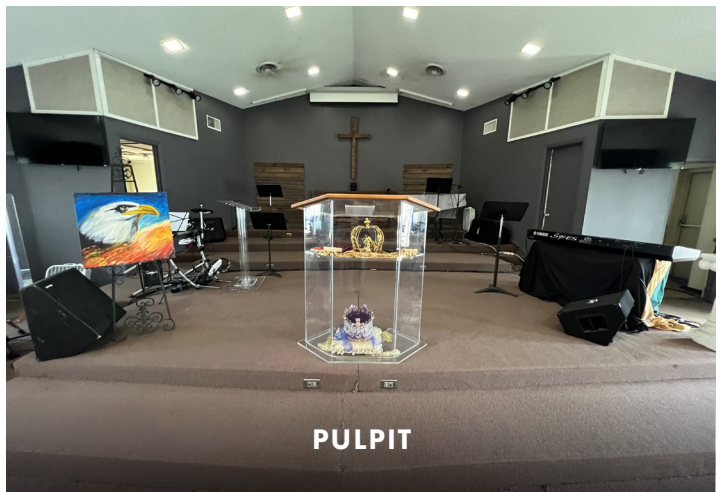
**FRONT EXTERIOR**



**NORTH SIDE EXTERIOR**



**SANCTUARY**



**PULPIT**



**FELLOWSHIP HALL**



**KITCHEN**

FOR MORE INFORMATION, PLEASE CONTACT:

**CHRIS BURY | 949.939.6238**

Broker, Partner  
chris.bury@foundrycommercial.com  
Licensed Real Estate Broker

**BRIAN BROOKS | 214.996.9818**

Senior Vice President  
brian.brooks@foundrycommercial.com  
Licensed Real Estate Broker

**FOUNDRY**  
COMMERCIAL

MISSION  
PROPERTY  
GROUP

Although the information contained herein was provided by sources believed to be reliable, Foundry Commercial makes no representation, expressed or implied, as to its accuracy and said information is subject to errors, omissions or changes.

[foundrycommercial.com](http://foundrycommercial.com)

**PHOTOS**



**OFFICE**



**PASTOR'S LIBRARY**



**NURSERY**



**CLASSROOM**



**BACK LAND**



**PARKING**

FOR MORE INFORMATION, PLEASE CONTACT:

**CHRIS BURY | 949.939.6238**  
Broker, Partner  
chris.bury@foundrycommercial.com  
Licensed Real Estate Broker

**BRIAN BROOKS | 214.996.9818**  
Senior Vice President  
brian.brooks@foundrycommercial.com  
Licensed Real Estate Broker

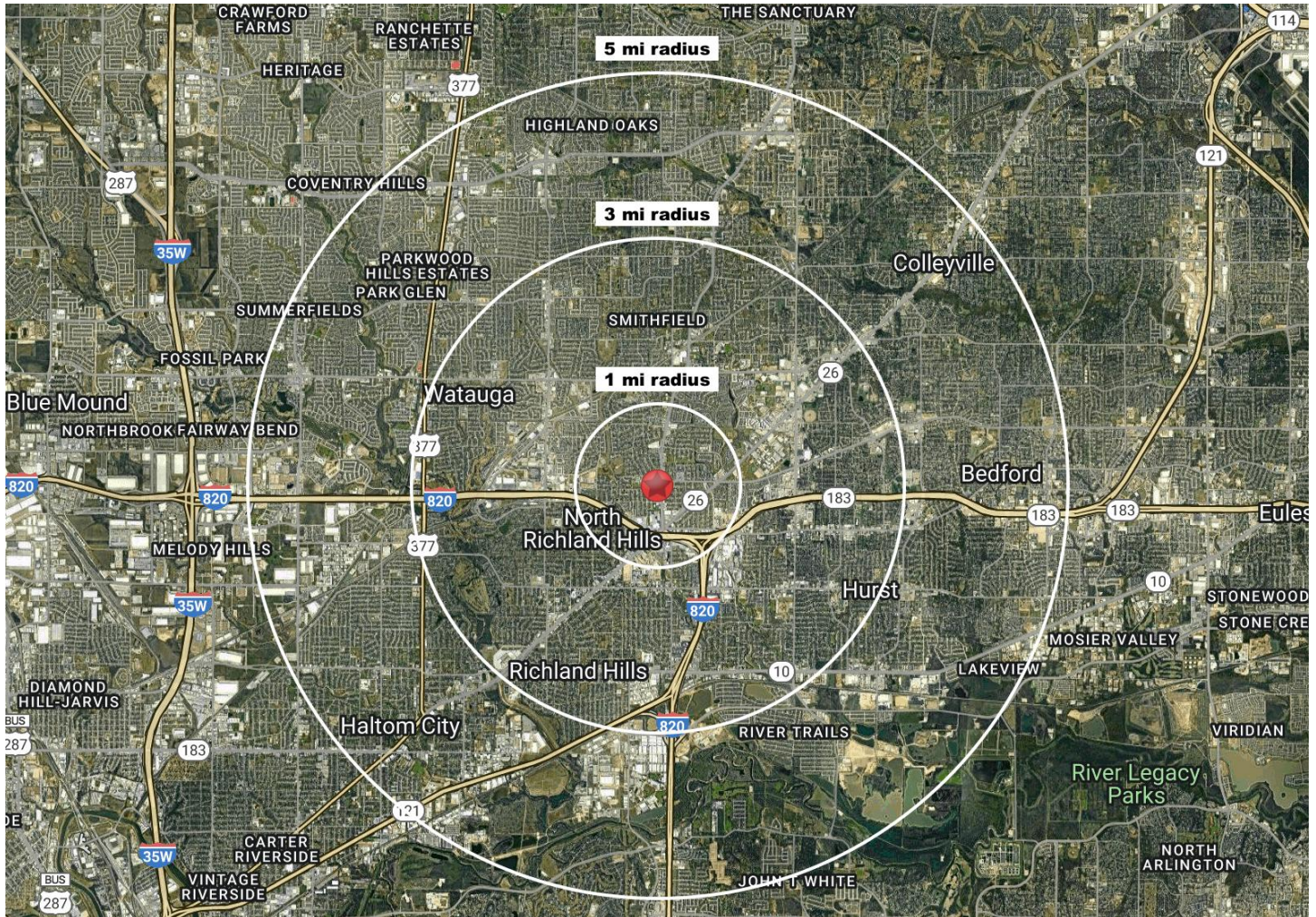
**FOUNDRY**  
COMMERCIAL

MISSION  
PROPERTY  
GROUP

Although the information contained herein was provided by sources believed to be reliable, Foundry Commercial makes no representation, expressed or implied, as to its accuracy and said information is subject to errors, omissions or changes.

[foundrycommercial.com](http://foundrycommercial.com)

## DEMOGRAPHICS



### 1 MILE RADIUS

	<b>14,064</b> ESTIMATED POPULATION 2023
	<b>15,338 (+1.8%)</b> PROJECTED POPULATION 2028
	<b>\$236,235</b> MEDIAN HOME VALUE 2023
	<b>\$97,770</b> AVG HOUSEHOLD INCOME

### 3 MILE RADIUS

	<b>110,254</b> ESTIMATED POPULATION 2023
	<b>117,125 (+1.2%)</b> PROJECTED POPULATION 2028
	<b>\$254,450</b> MEDIAN HOME VALUE 2023
	<b>\$107,256</b> AVG HOUSEHOLD INCOME

### 5 MILE RADIUS

	<b>287,409</b> ESTIMATED POPULATION 2023
	<b>303,660 (+1.1%)</b> PROJECTED POPULATION 2028
	<b>\$274,252</b> MEDIAN HOME VALUE 2023
	<b>\$119,387</b> AVG HOUSEHOLD INCOME

FOR MORE INFORMATION, PLEASE CONTACT:

**CHRIS BURY | 949.939.6238**  
 Broker, Partner  
 chris.bury@foundrycommercial.com  
 Licensed Real Estate Broker

**BRIAN BROOKS | 214.996.9818**  
 Senior Vice President  
 brian.brooks@foundrycommercial.com  
 Licensed Real Estate Broker



MISSION  
PROPERTY  
GROUP

Although the information contained herein was provided by sources believed to be reliable, Foundry Commercial makes no representation, expressed or implied, as to its accuracy and said information is subject to errors, omissions or changes.