

# Delray North Business Center

1395 NW 17th Avenue, Delray Beach, FL 33445

±4,600 SQUARE FOOT OFFICE / FLEX SPACE AVAILABLE IN DELRAY BEACH



## PROPERTY DETAILS

- ±50,488 SF Total Building Size
- **Total Available Space**  
Suite 106/107, ±4,600 SF Office/Flex Space
- 14' - 20' Clear Height
- 50/50 Office/Warehouse
- Located between W. Atlantic Avenue and Woolbright Road on S. Congress Avenue with frontage along I-95
- Situated in the Delray Park of Commerce master planned corporate park
- Frontage, Signage and Visibility Available along I-95

## Contact Us

### JEFF KELLY

Executive Vice President

+1 561 393 1621

jeffrey.kelly@cbre.com

### KIRK NELSON

Executive Vice President

+1 561 716 9936

kirk.nelson@cbre.com

LEASE RATE - Please Call for Details

# ±4,600 SF Office / Flex Space Available in Delray Beach

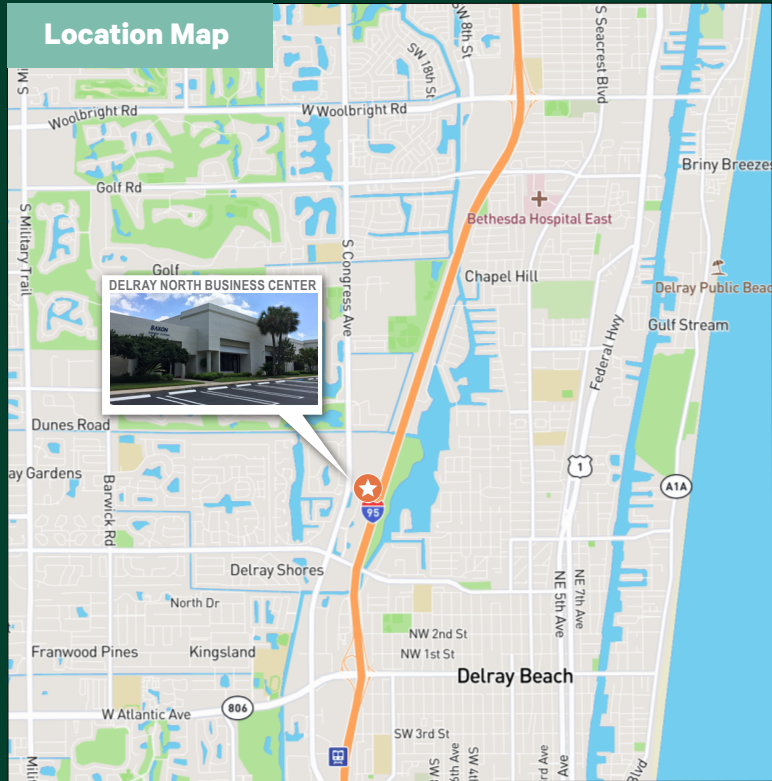
1395 NW 17th Avenue | Delray Beach, FL 33445

# For Lease

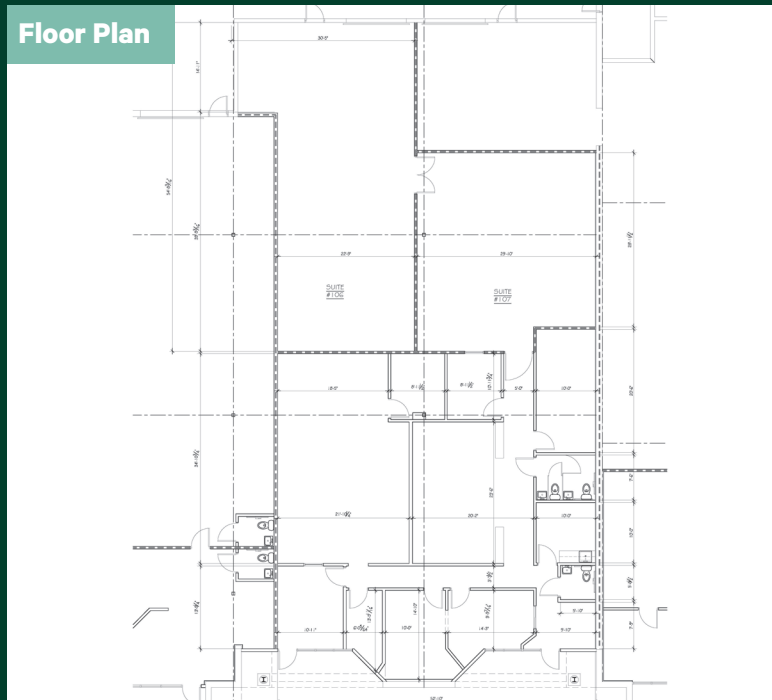
## Property Photos



## Location Map



## Floor Plan



## Contact Us

**JEFF KELLY**  
Executive Vice President  
+1 561 393 1621  
jeffrey.kelly@cbre.com

**KIRK NELSON**  
Executive Vice President  
+1 561 716 9936  
kirk.nelson@cbre.com

© 2024 CBRE, Inc. All rights reserved. This information has been obtained from sources believed reliable, but has not been verified for accuracy or completeness. You should conduct a careful, independent investigation of the property and verify all information. Any reliance on this information is solely at your own risk. CBRE and the CBRE logo are service marks of CBRE, Inc. All other marks displayed on this document are the property of their respective owners, and the use of such logos does not imply any affiliation with or endorsement of CBRE. Photos herein are the property of their respective owners. Use of these images without the express written consent of the owner is prohibited.