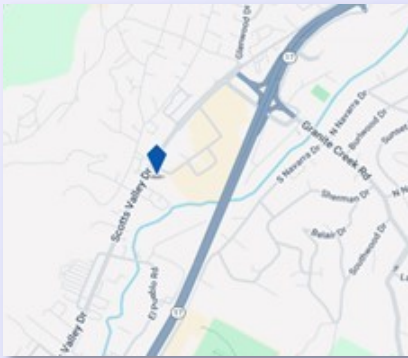


# AVAILABLE FOR LEASE

## 5346 SCOTTS VALLEY DRIVE, UNIT F

### AUTOMOTIVE /RETAIL SPACE FOR LEASE SCOTTS VALLEY



**5346 SCOTTS VALLEY DRIVE, UNIT F**  
**±2,500 SF**

- DESIREABLE RETAIL AUTOMOTIVE CENTER IN SCOTTS VALLEY
- GOOD MIX OF AUTOMOTIVE USES IN CENTER
- EASY ACCESS TO FREEWAY
- GREAT VISIBILITY ALONG SCOTTS VALLEY DRIVE
- ROLL-UP ACCESS
- MONUMENT SIGNAGE
- AMPLE PARKING
- \$1.75 SF/MO NNN (\$.42)



**JIM WISEMAN**  
**831-818-5454**

DRE #01104278  
[jwiseman@sheldonwiseman.com](mailto:jwiseman@sheldonwiseman.com)



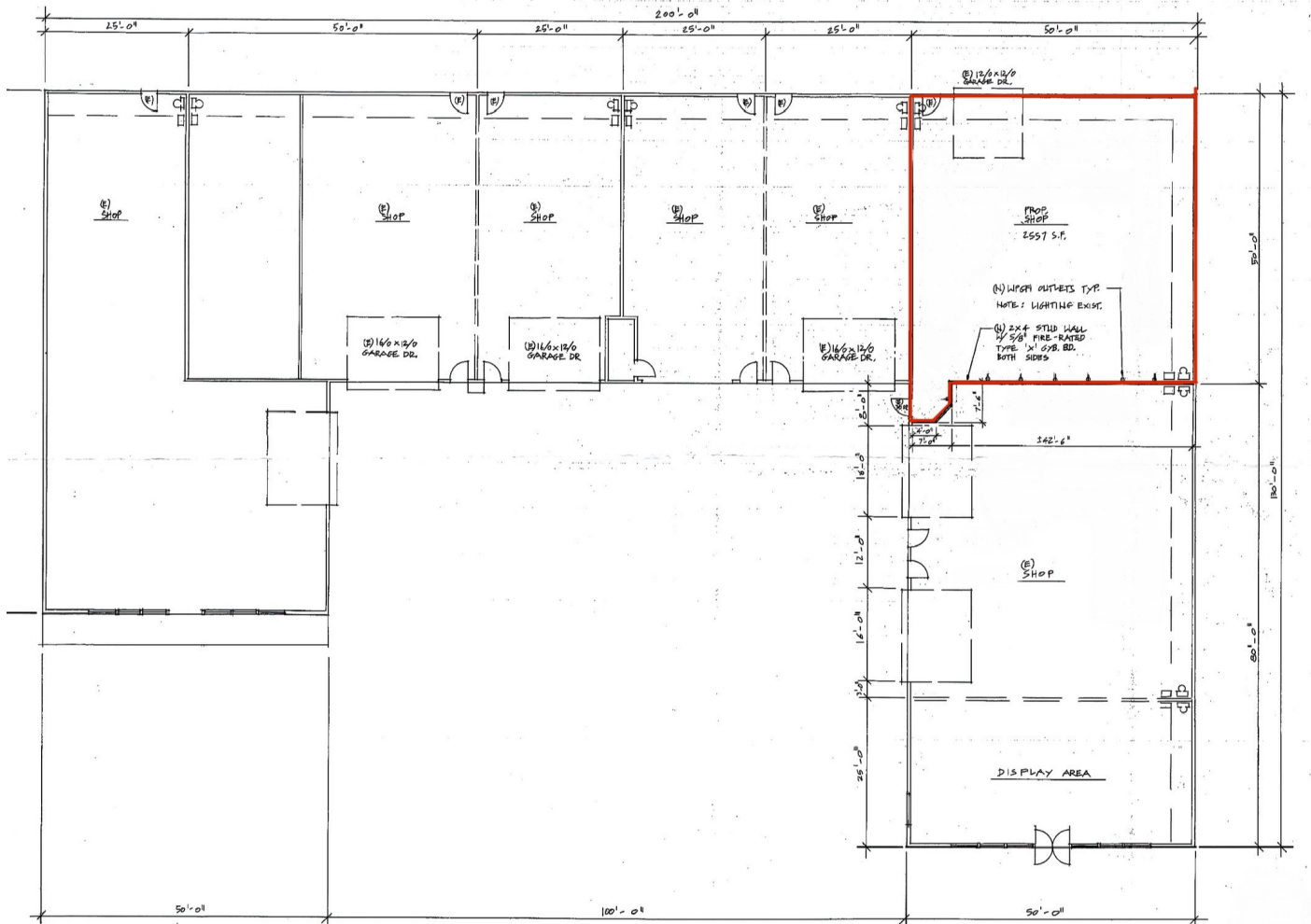
*While the information contained herein is deemed reliable, we cannot guarantee its accuracy. All information should be verified.*

1200 Pacific Avenue, Suite 390 ■ Santa Cruz, CA 95060  
Tel: 831 ■ 454 ■ 9400 ■ Fax: 831 ■ 459 ■ 7988 ■ [www.sheldonwiseman.com](http://www.sheldonwiseman.com)

INTEGRITY ■ SERVICE ■ RESULTS

# FLOOR PLAN

5346 SCOTTS VALLEY DRIVE, UNIT F  
SCOTTS VALLEY, CA  
±2,500 SF



While the information contained herein is deemed reliable, we cannot guarantee its accuracy. All information should be verified.

INTEGRITY ■ SERVICE ■ RESULTS

