



CBRE

11500 ANTOINE DR. HOUSTON, TX

**FOR LEASE
UP TO
241,712 SF**

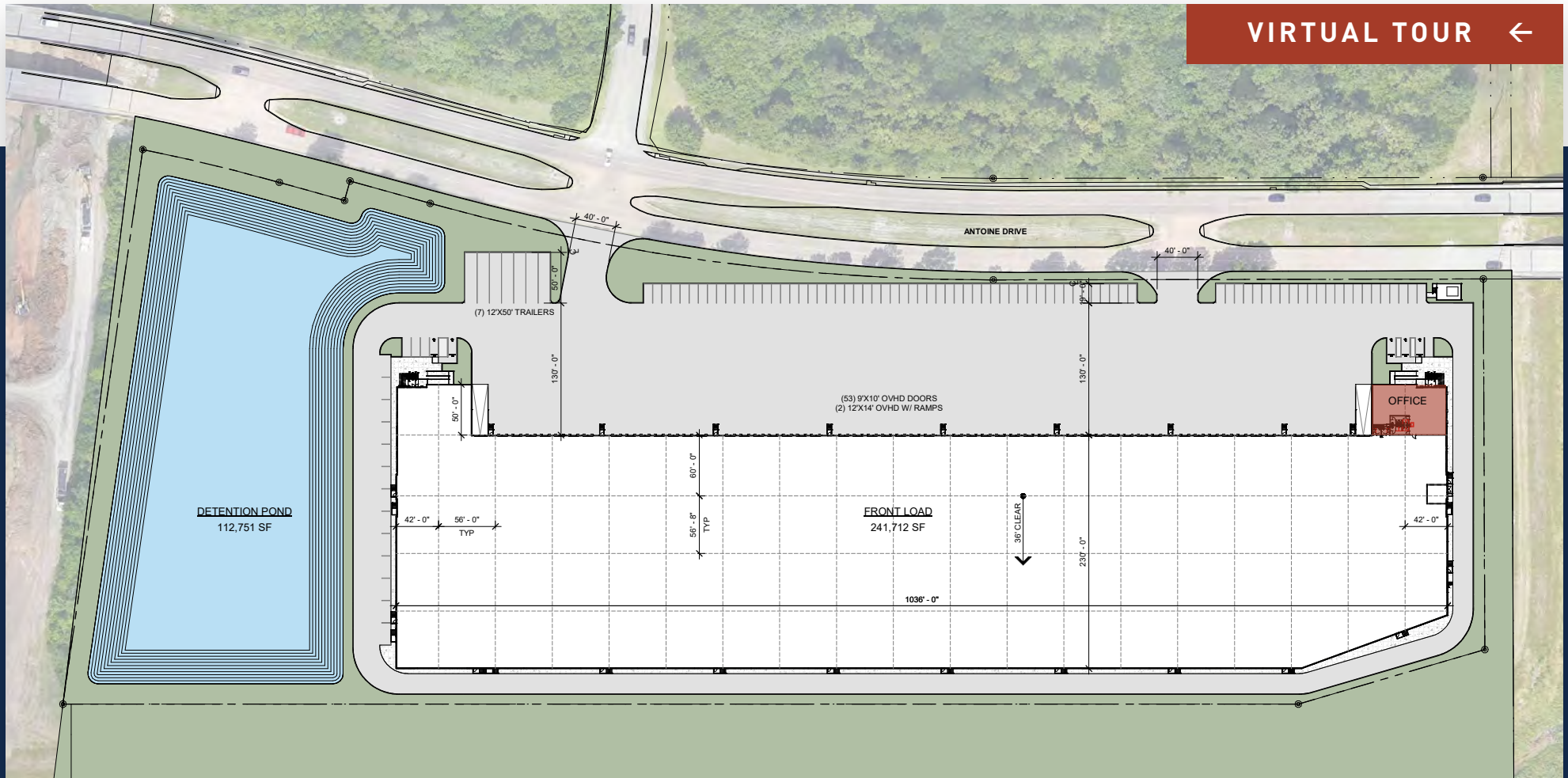
→ READY FOR OCCUPANCY



NORTHWEST HOUSTON
NEW CONSTRUCTION AVAILABLE
FRONT LOAD

CHAMPIONS PARK

PROPERTY HIGHLIGHTS



11500 Antoine Dr.
Houston, TX 77066
Front Load Bldg.



(53) 9' x 10' Dock High Doors
(2) 12' x 14' Overhead



130' Truck Court



±241,712 SF Total
±14.0181 AC
±3,667 SF Office



230' Depth While Boxed
Interior Slab Thickness -
6" Roof - 60 MIL TPO Roof



Convenient Access
to Beltway 8



56' x 56' 8" Typical Bays
60' Speed Bays



36' Clear Height

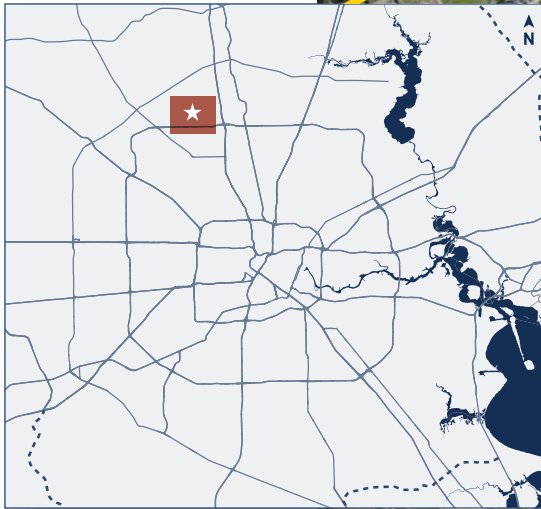


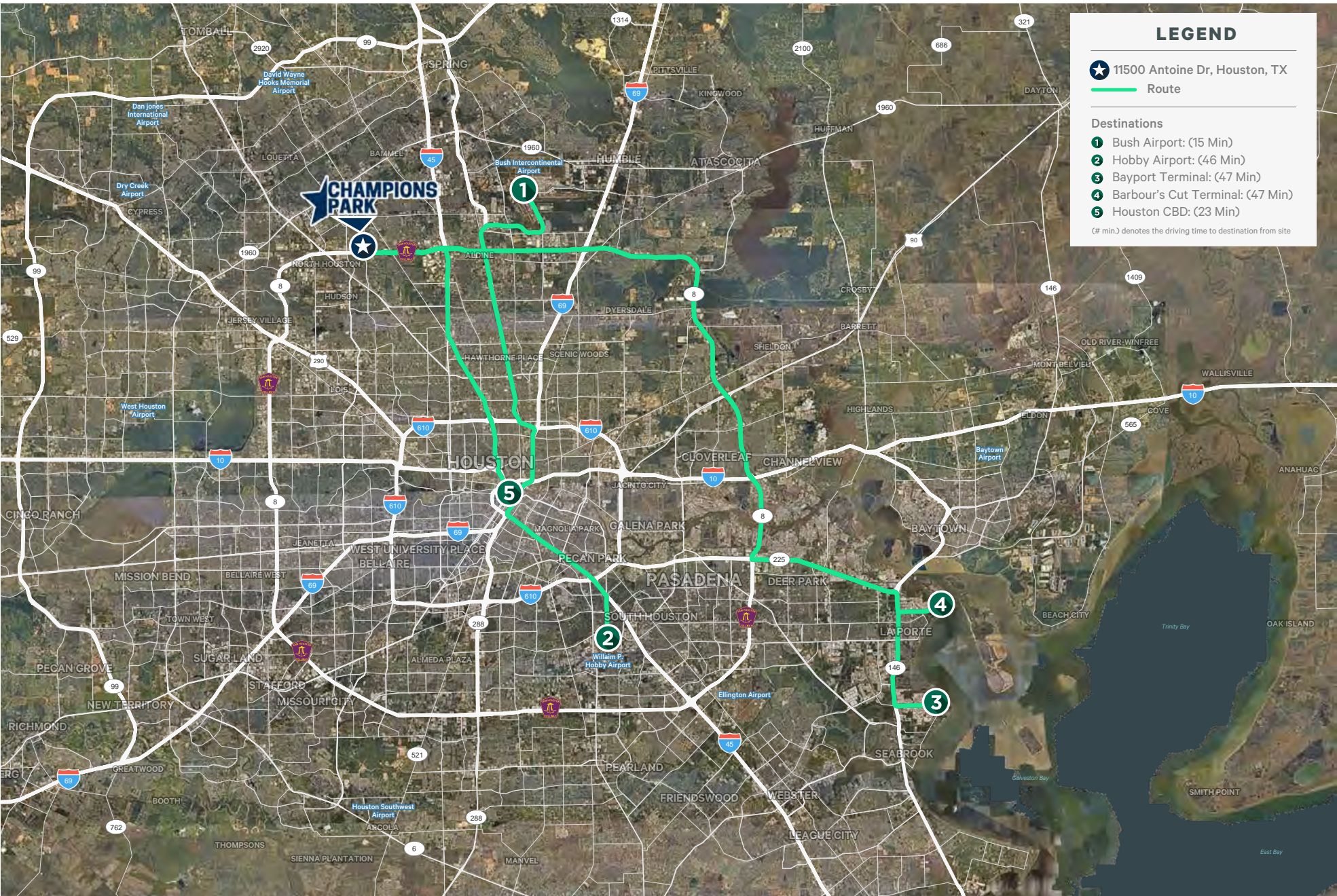
99 Auto Parks -
Expandable

CHAMPIONS PARK

11500 ANTOINE DR., HOUSTON, TX

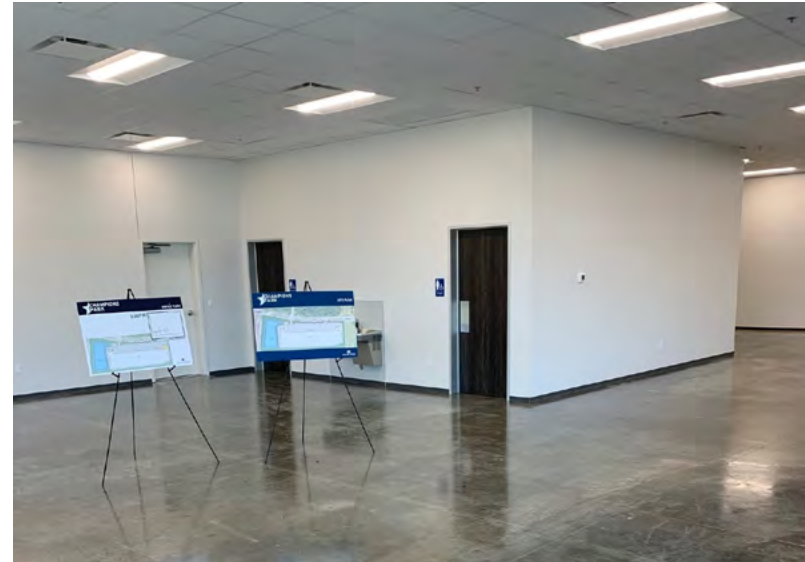
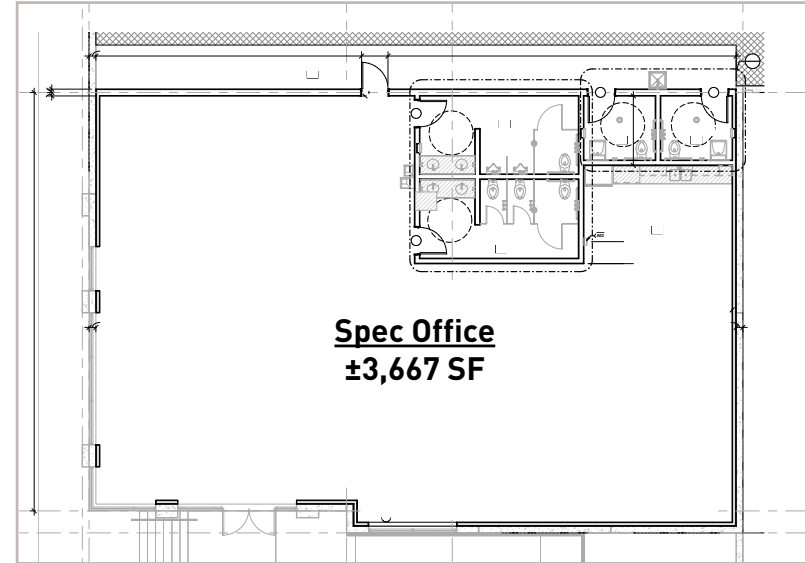
HOUSTON





CHAMPIONS PARK

SPEC OFFICE - $\pm 3,667$ SF



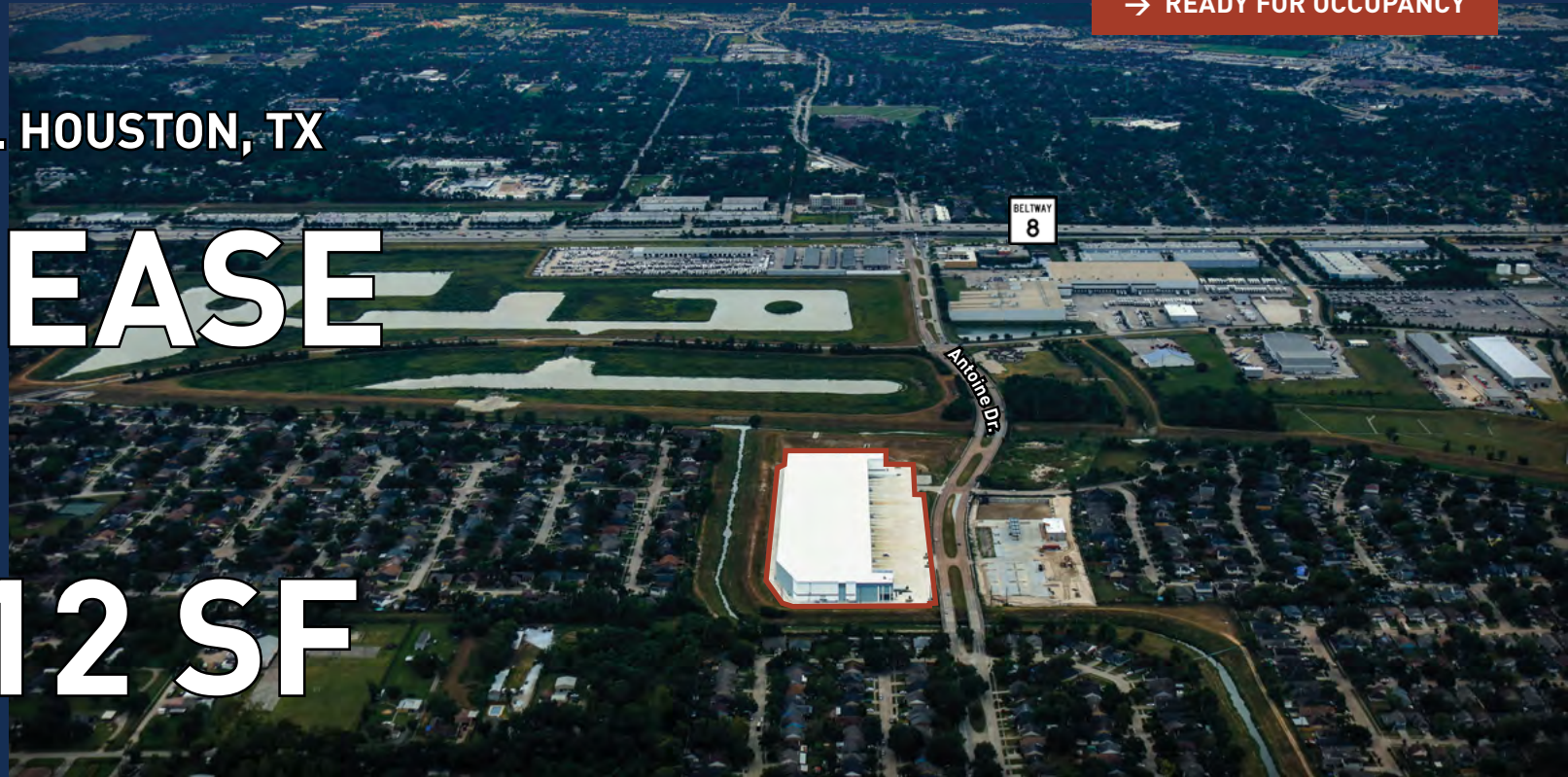


CBRE

→ READY FOR OCCUPANCY

11500 ANTOINE DR. HOUSTON, TX

**FOR LEASE
UP TO
241,712 SF**



**FOR MORE INFORMATION,
PLEASE CONTACT:**

JASON DILLEE
Senior Vice President
713 577 1796
jason.dillee@cbre.com

JOSEPH SMITH
Senior Vice President
713 577 1847
joseph.smith@cbre.com

GREGORY HOLMES
Senior Associate
713 577 1902
gregory.holmes@cbre.com

**NORTHWEST HOUSTON
NEW CONSTRUCTION AVAILABLE
FRONT LOAD**

CBRE © 2024 All Rights Reserved. All information is presented exclusively for use by CBRE clients and professionals and all rights to the material are reserved and cannot be reproduced without prior written permission. CBRE and the CBRE logo are service marks of CBRE, Inc. All other marks displayed on this document are the property of their respective owners, and the use of such logos does not imply any affiliation with or endorsement of CBRE. Photos herein are the property of their respective owners and use of these images without the express written consent of the owner is prohibited.

