

For Sale Land for Development

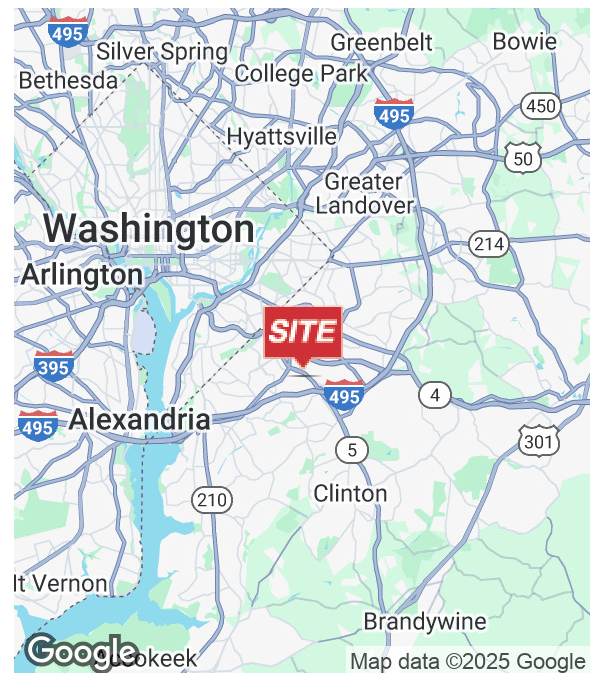


5200 Beech Road

Temple Hills, Maryland 20748

Property Highlights

- Total of 4.91± acres
- Zoned CGO (Commercial General Office)
- Permitted uses include townhouse/multifamily developments, hotels, churches and convenience stores by right
- Other uses allowed per special exception
- Previously zoned CO (Commercial Office)
- Excellent accessibility to the Capital Beltway (I-495) and Branch Avenue (Route 5)
- Near many amenities and new developments, including the Branch Avenue Metro station, Restaurant Row Apollo, and Joint Base Andrews
- SALE PRICE: \$2,200,000



Barbara Richman Kahn

O: 301 918 2952
brichman@naimichael.com

Michael Isen

O: 301 918 2908
misen@naimichael.com

Michael DiMeglio

O: 301 918 2949
mdimeglio@naimichael.com

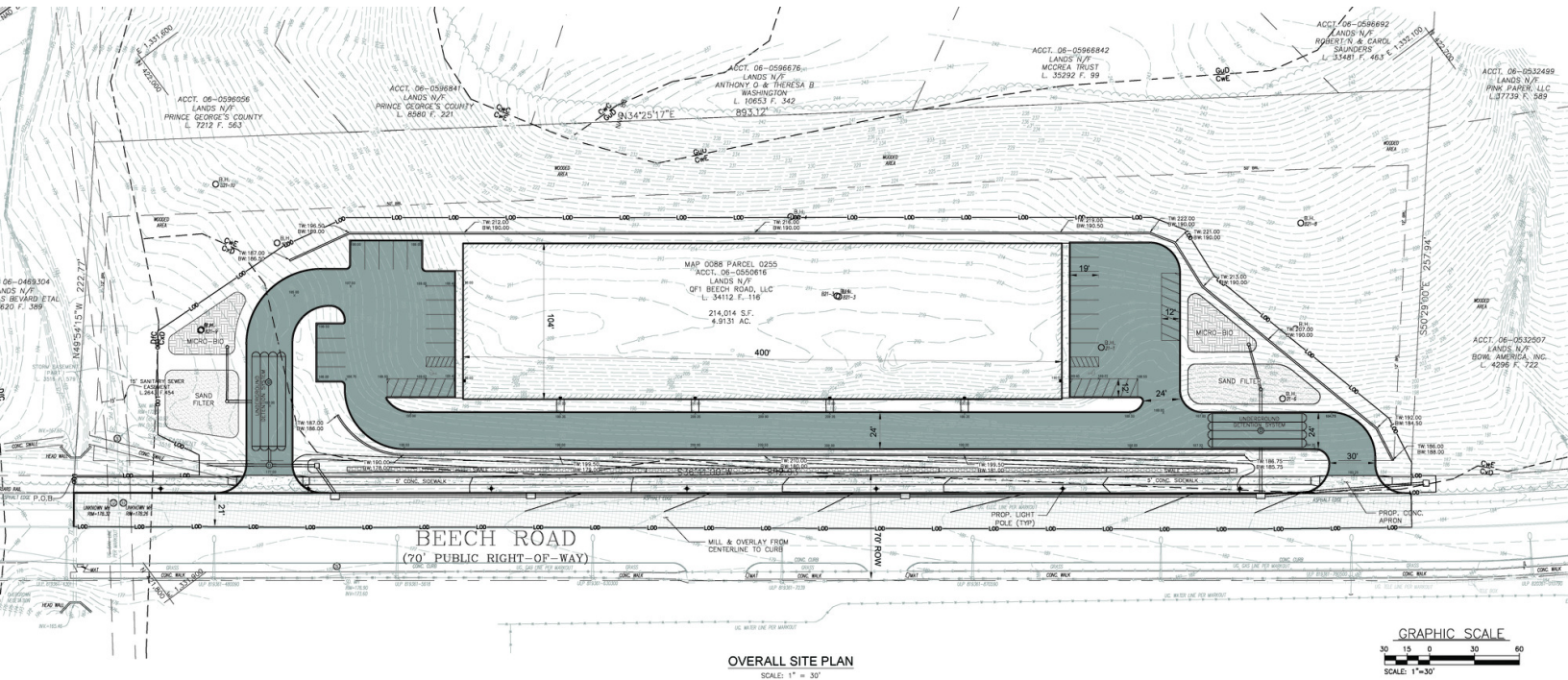


10100 Business Pkwy
Lanham, MD 20706
301 459 4400 tel
www.naimichael.com

For Sale
Land for Development



Site Aerial



Site Plan Example - For Illustrative Purposes Only



The information contained herein has been given to us by the owner of the property or other sources we deem reliable. We have no reason to doubt its accuracy, but we do not guarantee it. Floor plans, site plans and other graphic representations of this property have been reduced and reproduced, and are not necessarily to scale. All information should be verified prior to purchase or lease.