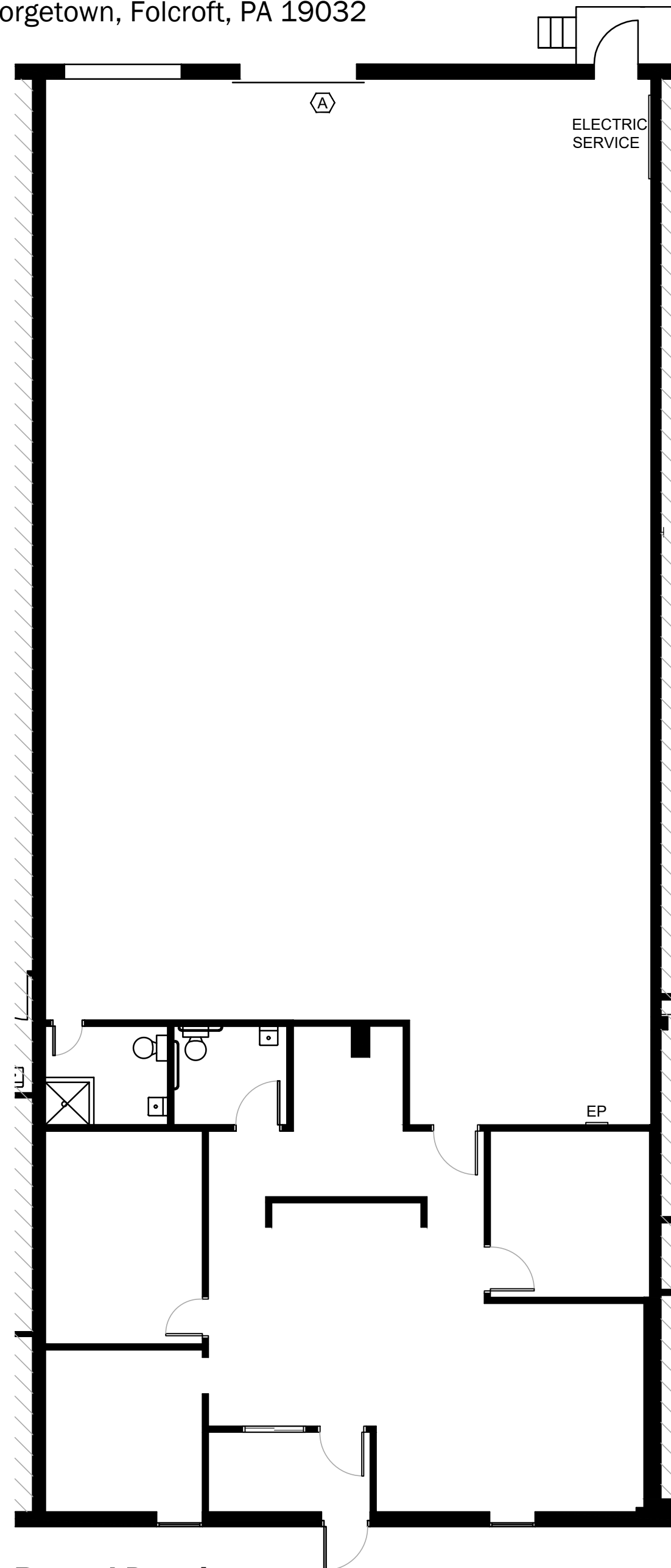
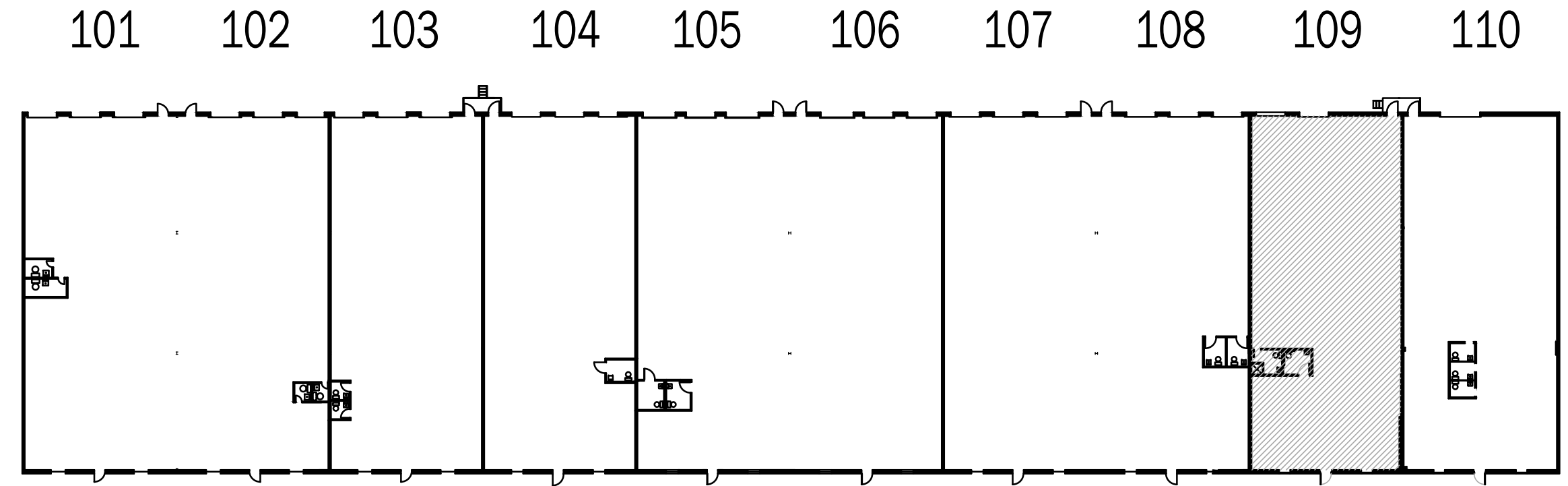




HENDERSON
 Darby Commons - Georgetown, Folcroft, PA 19032
 05/01/19



Record Drawing
 Scale: 1/8" = 1'-0"



Key Plan
 Not to Scale

SPACE INFORMATION	
SYMBOL	DESCRIPTION
	BUILDING ADDRESS: DARBY COMMONS GEORGETOWN BAY 109, FOLCROFT, PA 19032
	TOTAL UNIT SQUARE FOOTAGE - 4,250 OFFICE SQUARE FOOTAGE - 1,300 WAREHOUSE SQUARE FOOTAGE - 2,950 OVERALL UNIT DIMENSIONS - 42'-6" X 100'-0" CEILING HEIGHT 16' ELECTRIC SERVICE 120/208 V. 200 AMPS, 3 PHASE GAS HEAT WAREHOUSE MEZZANINE STORAGE AREA ABOVE OFFICES
(A)	INDICATES 8' X 8' OVERHEAD DOCK DOOR WITH TAILGATE ACCESS. (QTY. -1)

ARCHITECTURAL LEGEND	
SYMBOL	DESCRIPTION
	EXISTING CONSTRUCTION TO REMAIN
	INDICATES DOOR, FRAME & HARDWARE
	INDICATES REMAINING AREAS FOR REFERENCE ONLY (NOT IN CONTRACT)

PRELIMINARY - NOT FOR CONSTRUCTION