

# MATTHEWS TOWNSHIP OFFICE PARK

Office / Medical Office  
Condo - Suite 301  
5,069 SF

**Currently Build Out  
As Medical Use**



NAI Southern Real Estate  
4201 Congress Street, Suite 170  
Charlotte, NC 28209  
srenc.com / 704-375-1000

## Contact:

**Caldwell Rose**  
President  
crose@srenc.com  
D: 704-632-7622

**Mike Wiles**  
President  
mwiles@srenc.com  
D: 704-632-7633

1340 Matthews Township Pkwy | Matthews, North Carolina

**MATTHEWS TOWNSHIP OFFICE PARK**  
**OFFICE / MEDICAL OFFICE CONDO**

[www.srenc.com](http://www.srenc.com)



## PROPERTY HIGHLIGHTS

### MATTHEWS TOWNSHIP OFFICE PARK OFFICE / MEDICAL OFFICE PREMIER CONDO

This premier medical and professional center boasts a high-quality tenant mix, anchored by reputable and long-established medical providers. The concentration of healthcare users fosters a strong referral network and patient convenience, enhancing the overall value of the location for both tenants and visitors. A diverse range of specialties creates a complementary and synergistic environment for healthcare professionals.

Strategically positioned in the prestigious Matthews medical submarket, next to the Novant Health Matthews Medical Center, the property enjoys prime frontage along Highway 51 / Matthews Township Pkwy—one of the most heavily traveled and recognized corridors in the area. Tenants benefit from exceptional accessibility, proximity to affluent residential communities, and close connections to SouthPark Mall, top-tier restaurants, and high-end retail. The location also offers convenient access to Uptown Charlotte, major hospital systems, and key commuter routes, making it a sought-after destination for both practitioners and patients.

This setting offers not only a professional and polished atmosphere but also an opportunity to grow within one of Charlotte's most dynamic and well-established submarkets.

Sales Price: \$2,110,000

5,069 SF Available



+32,000 VPD on Hwy 51 in front of the site.



*Next to Novant Matthews Hospital*

High quality business mix of medical users.

**Currently Build Out  
As Medical Use**





1340 - Suite 301



**Caldwell Rose**  
President  
crose@srenc.com  
D: 704-632-7622

**Mike Wiles**  
Vice President  
mwiles@srenc.com  
D: 704-632-7633

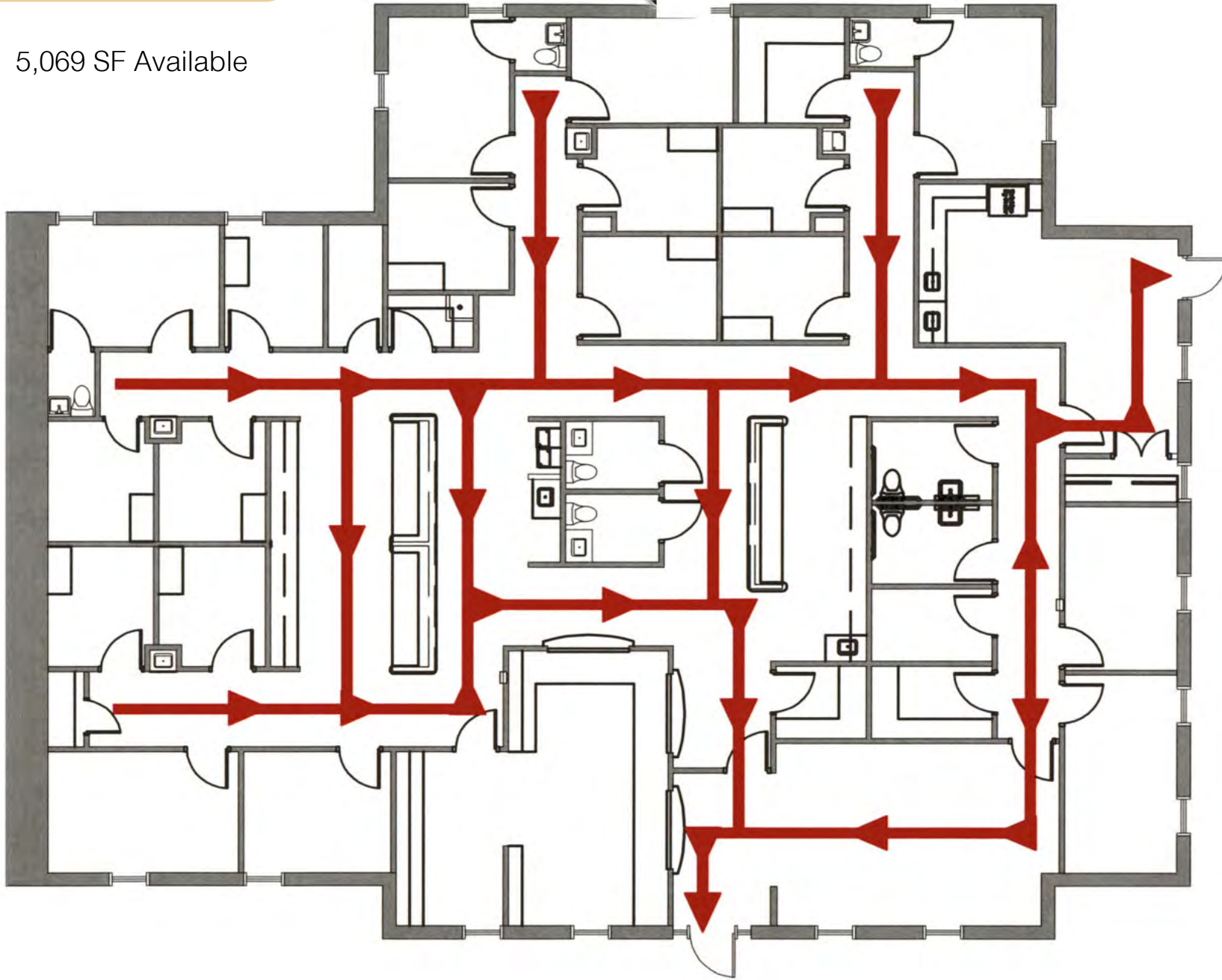
**MATTHEWS TOWNSHIP OFFICE PARK**  
**OFFICE / MEDICAL OFFICE CONDO**

[www.srenc.com](http://www.srenc.com)



## Suite 301 Floor Plan

5,069 SF Available



## Interior Photos





## Interior Photos

