

JAMESTOWN MEDICAL BUILDING

525 JAMESTOWN AVENUE |
PHILADELPHIA, PA 19128

AVAILABLE
IMMEDIATELY



AVAILABLE FOR LEASE

PROPERTY HIGHLIGHTS

- Current Availabilities
 - Suite 108- 900 SF
 - Suite 204- 974 SF
 - Suite 207- 2,736 SF
- Conducive to medical or traditional office space
- 24,500 SF, 2-story office building
- Elevator served
- Adjacent to Roxborough Memorial Hospital
- Ample off-street parking
- Situated in the heart of Roxborough in close proximity to countless amenities

**EXCLUSIVELY
REPRESENTED BY
THE FLYNN COMPANY**

BRENDAN FLYNN
BFLYNN@FLYNNCO.COM
215-561-6565 X 152

MICHAEL GALLAGHER
MGALLAGHER@FLYNNCO.COM
215-561-6565 X 151

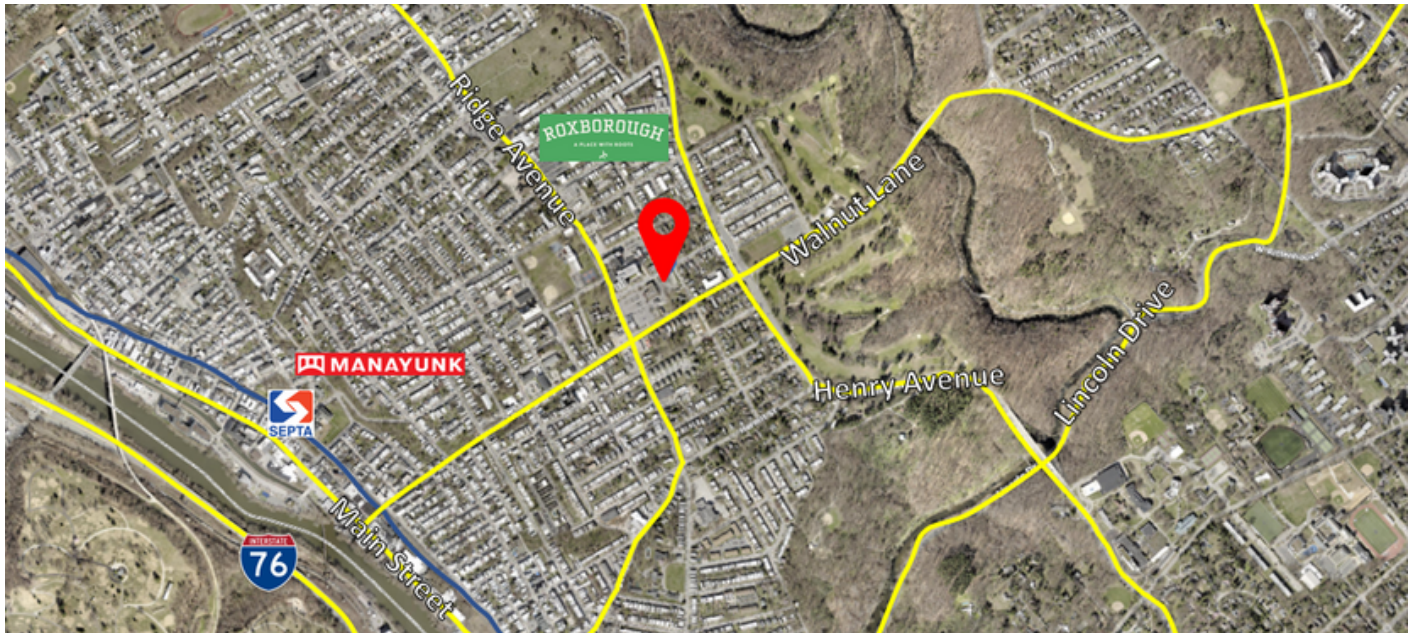
JOSEPH NASELLI
JNASELLI@FLYNNCO.COM
215-561-6565 X 155

The
Flynn
Company

THE FLYNN COMPANY

WWW.FLYNNCO.COM | 1621 WOOD STREET, PHILADELPHIA, PA 19103 | 215.561.6565

LOCATION



AERIAL



For More Information
Please Contact:

BRENDAN FLYNN
BFLYNN@FLYNNCO.COM
215-561-6565 X 152

MICHAEL GALLAGHER
MGALLAGHER@FLYNNCO.COM
215-561-6565 X 151

JOSEPH NASELLI
JNASELLI@FLYNNCO.COM
215-561-6565 X 155