



# 5024 CAMPBELL BOULEVARD

BALTIMORE, MARYLAND 21236

FOR  
**SUBLEASE**



**MACKENZIE**

COMMERCIAL REAL ESTATE SERVICES, LLC



# PROPERTY OVERVIEW

## HIGHLIGHTS:

- End unit space available for sublease
- Direct access to I-95 and I-695
- Convenient access to Downtown Baltimore, Towson, Harford County, and the Port of Baltimore
- High visibility - 24,291 AADT (Campbell Blvd)
- Located in the White Marsh Business Center, minutes from White Marsh Mall, The Avenue at White Marsh, and Nottingham Commons
- Adjacent to Johns Hopkins Physician Pavilion and Kaiser Permanente
- 120 surface parking spaces
- Close to retail, dining, and medical hubs

AVAILABLE:

4,710 SF ±

YEAR BUILT:

1986

PARKING:

3.53/1,000 SF

ZONING:

BM (BUSINESS MAJOR)

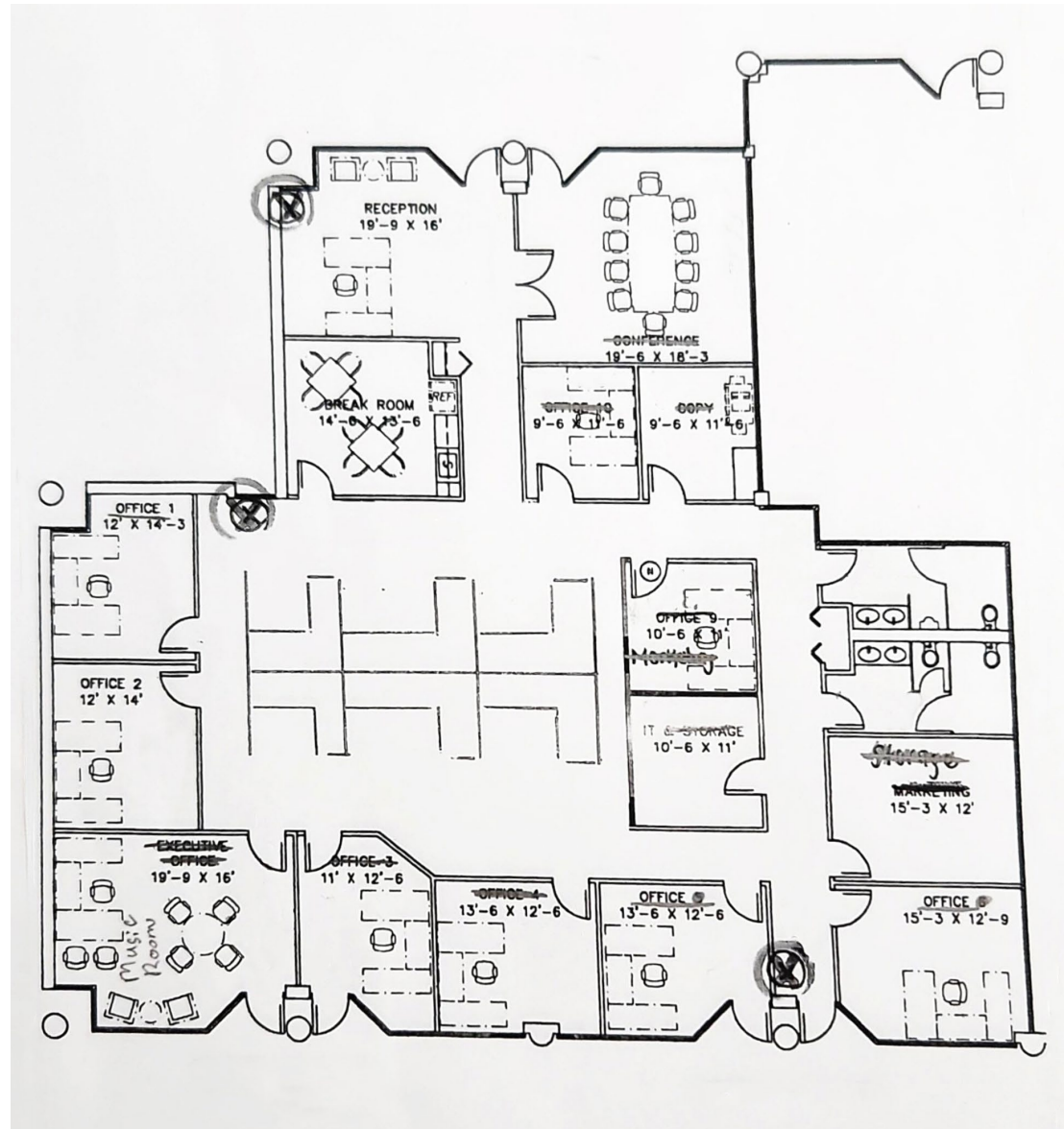
RENTAL RATE:

NEGOTIABLE





# FLOOR PLAN:





# LOCAL BIRDSEYE



43

SITE

White Marsh Mall

- BUFFALO WILD WINGS
- Chick-fil-A
- macy's
- DAVE & BUSTERS
- POPEYES
- Olive Garden
- Boscov's
- CINNABON

THE AVENUE at White Marsh

- STARBUCKS COFFEE
- ULTA
- Nike Clearance Store
- AMC THEATRES
- chili's
- BARNES & NOBLE BOOKSELLERS
- BANDITOS BAR & KITCHEN
- Bar Louie
- THE LOCAL

INTERSTATE 95

HONEYGO BLVD

TOWN CENTER DR

Avenue Grand  
SMART. STYLISH. EXCLUSIVELY GRAND.

SANDPIPER CIR



# DEMOGRAPHICS

2025

RADIUS:

1 MILE

3 MILES

5 MILES

## RESIDENTIAL POPULATION



7,591

92,581

218,735

## DAYTIME POPULATION



12,725

87,406

185,717

## AVERAGE HOUSEHOLD INCOME



\$108,362

\$119,242

\$110,919

## NUMBER OF HOUSEHOLDS



3,242

36,094

86,775

## MEDIAN AGE



38.2

39.7

40.5

FULL DEMOS REPORT





# FOR MORE INFO CONTACT:

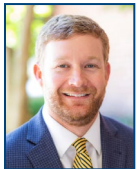


## JOE BRADLEY

SENIOR VICE PRESIDENT & PRINCIPAL

410.494.4892

JBRADLEY@mackenziecommercial.com



## HENSON FORD

VICE PRESIDENT

410.494.6657

HFORD@mackenziecommercial.com



# MACKENZIE

COMMERCIAL REAL ESTATE SERVICES, LLC

410-821-8585

2328 W. Joppa Road, Suite 200  
Lutherville, MD 21093

OFFICES IN: ANNAPOLIS, MD BALTIMORE, MD BEL AIR, MD COLUMBIA, MD LUTHERVILLE, MD CHARLOTTESVILLE, VA

[www.MACKENZIECOMMERCIAL.com](http://www.MACKENZIECOMMERCIAL.com)



VISIT **PROPERTY PAGE** FOR MORE INFORMATION.

No warranty or representation, expressed or implied, is made as to the accuracy of the information contained herein, and same is submitted subject to errors, omissions, change of price, rental or other conditions, withdrawal without notice, and to any specific listing conditions imposed by our principals.