

Shibley Properties

whatever it takes



17800 CHILlicoTHE RD.
BAINBRIDGE, OH 44023

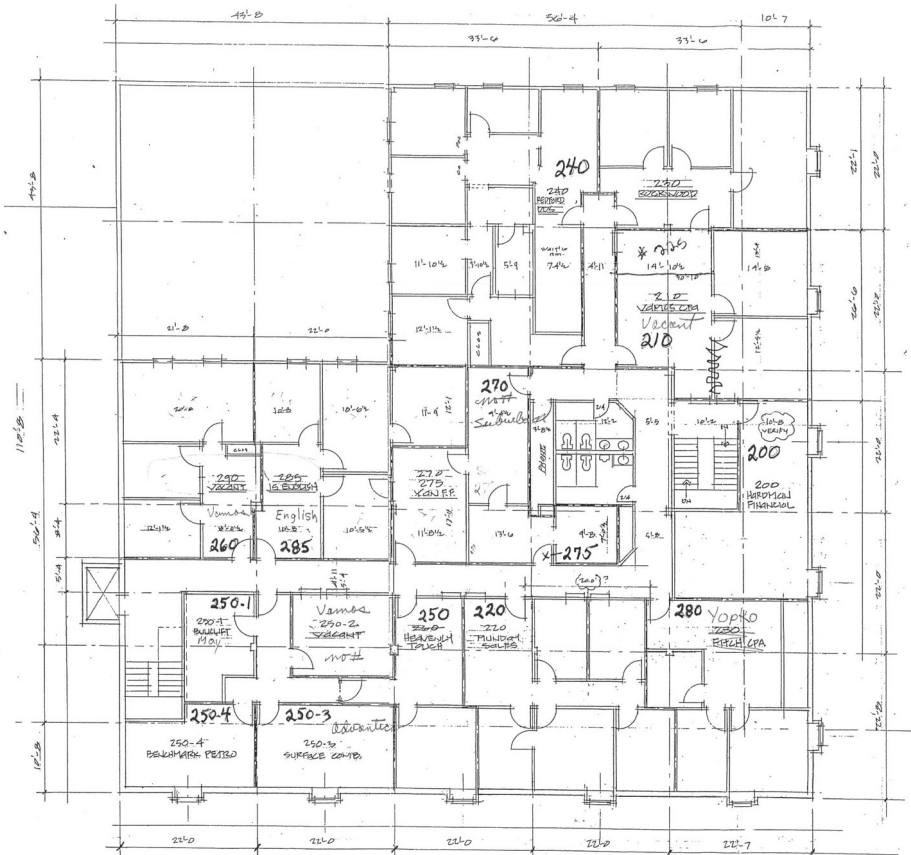
For more information contact Larry Shibley
216.469.3232 • ls@ytr.com • shibleyproperties.com

PROPERTY FEATURES



- Approximately 758-1504 sq ft.
- Retail/Office use
- Located In Bainbridge, OH
- multiple space options for lease

For more information contact Larry Shibley
216.469.3232 • ls@ytr.com • shibleyproperties.com

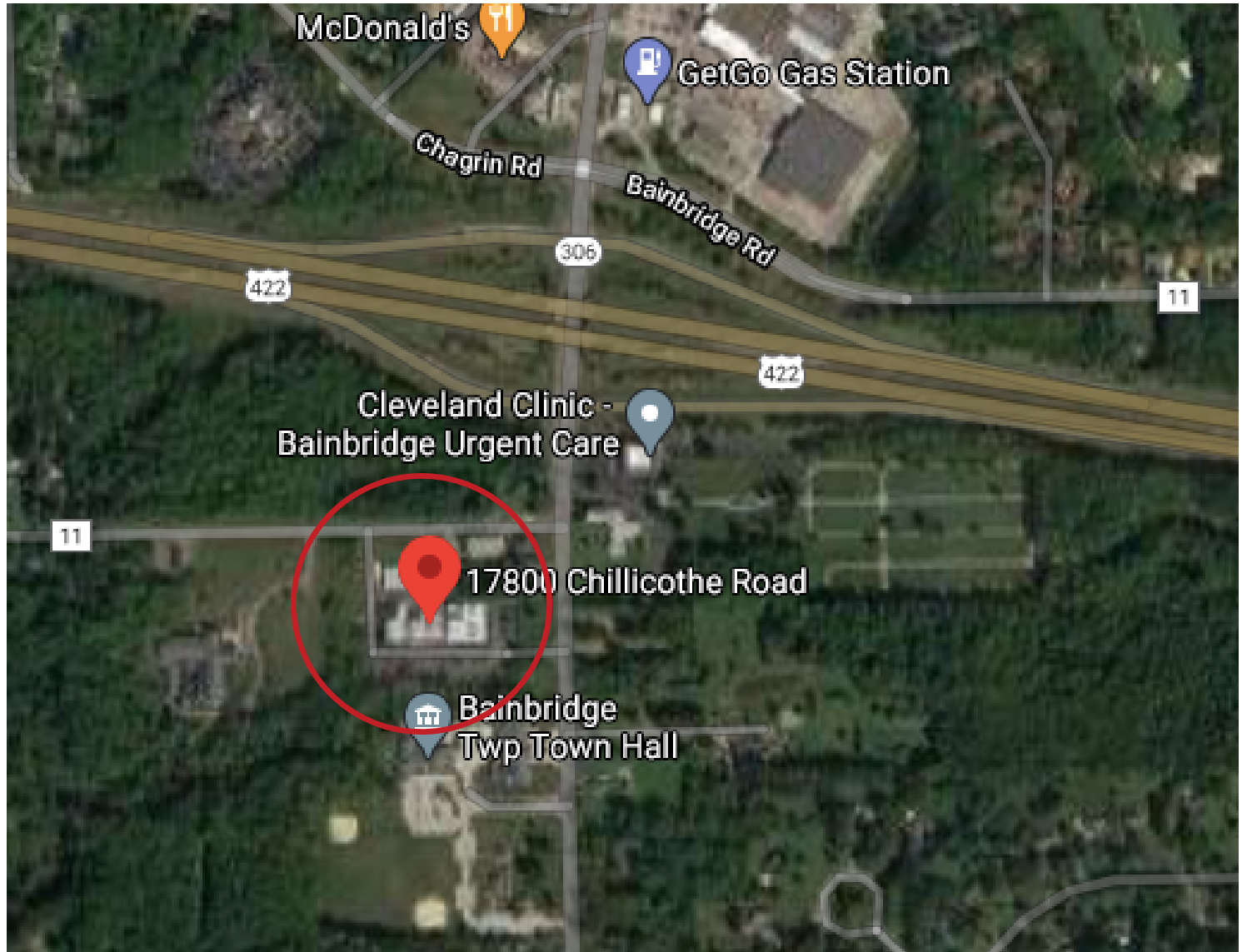


BAINBRIDGE COMMONS	
17800 CHILlicoTHE ROAD BAINBRIDGE TOWNSHIP OHIO	
HENRY PIPER ARCHITECT 7 RIVER ST. CHAGRIN FALLS 44022 440-247-7349	
MEASURED 2ND FLOOR KEY PLAN 1/16" = 1'-0" 4/14/08	A-2

B
0.2

- **Note: This Floor Plan Is Not Guaranteed To Be Accurate Or Complete**

For more information contact Larry Shibley
 216.469.3232 • ls@ytr.com • shibleyproperties.com



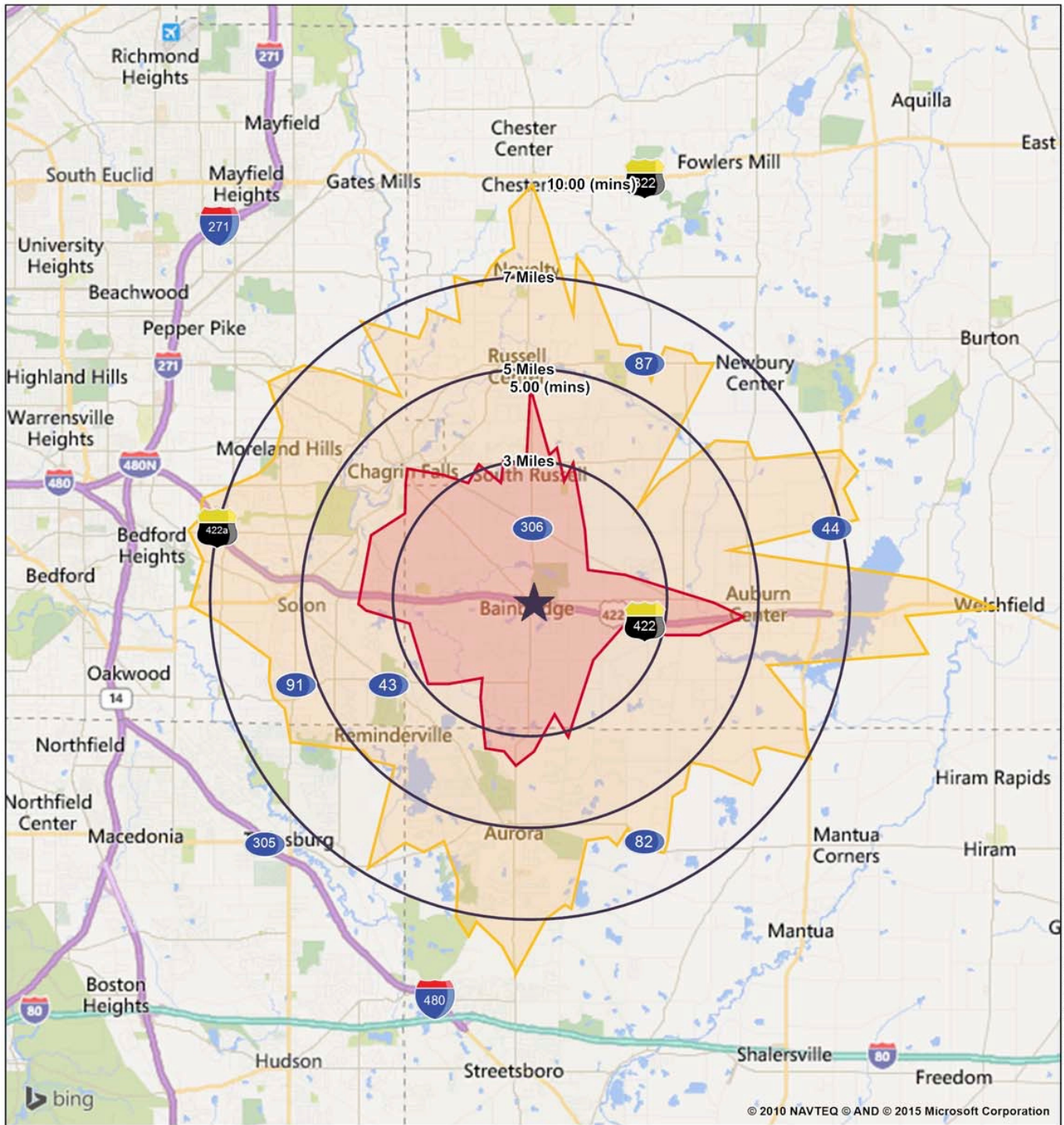
For more information contact Larry Shibley
216.469.3232 • ls@ytr.com • shibleyproperties.com



For more information contact Larry Shibley
216.469.3232 • ls@ytr.com • shibleyproperties.com

Lat: 41.3982 Lon: -81.3379 Zoom: 23.02 mi

Logos are for identification purposes only and may be trademarks of their respective companies.



© 2010 NAVTEQ © AND © 2015 Microsoft Corporation

©2015, Sites USA Inc., Chandler, AZ (480) 491-1112. All Rights Reserved.

**SR 422 & SR 306
Bainbridge, OH**

December 2015

Prepared by Passov Real Estate Group



This map was produced using data from private and government sources deemed to be reliable. The information herein is provided without representation or warranty.

SUMMARY PROFILE

2000-2010 Census, 2012 Estimates with 2017 Projections

Calculated using Proportional Block Groups



Prepared by Passov Real Estate Group

Lat/Lon: 41.3889/-81.3392

RS1

SR 422 & SR 306		3 Miles	5 Miles	7 Miles	5.00 (mins)
Bainbridge, OH					
POPULATION	2012 Estimated Population	13,495	42,705	85,354	14,295
	2017 Projected Population	13,736	42,867	85,050	14,469
	2010 Census Population	13,386	42,632	85,493	14,216
	2000 Census Population	12,654	38,788	79,652	13,414
	Projected Annual Growth 2012 to 2017	0.4%	0.1%	-0.1%	0.2%
	Historical Annual Growth 2000 to 2012	0.6%	0.8%	0.6%	0.5%
	2012 Median Age	44.8	44.2	43.8	44.4
HOUSEHOLDS	2012 Estimated Households	5,026	16,250	32,631	5,383
	2017 Projected Households	5,060	16,530	33,235	5,437
	2010 Census Households	5,019	16,143	32,397	5,365
	2000 Census Households	4,424	14,082	29,156	4,756
	Projected Annual Growth 2012 to 2017	0.1%	0.3%	0.4%	0.2%
	Historical Annual Growth 2000 to 2012	1.1%	1.3%	1.0%	1.1%
RACE AND ETHNICITY	2012 Estimated White	93.0%	90.3%	86.5%	91.2%
	2012 Estimated Black or African American	3.8%	4.7%	7.0%	4.9%
	2012 Estimated Asian or Pacific Islander	1.3%	3.2%	4.5%	1.9%
	2012 Estimated American Indian or Native Alaskan	0.1%	0.1%	0.1%	0.1%
	2012 Estimated Other Races	1.8%	1.8%	2.0%	1.9%
	2012 Estimated Hispanic	1.0%	1.2%	1.3%	1.0%
INCOME	2012 Estimated Average Household Income	\$137,300	\$137,997	\$127,453	\$141,723
	2012 Estimated Median Household Income	\$92,633	\$91,863	\$91,543	\$94,208
	2012 Estimated Per Capita Income	\$51,164	\$52,815	\$49,014	\$53,387
EDUCATION (AGE 25+)	2012 Estimated Elementary (Grade Level 0 to 8)	0.6%	1.2%	1.1%	0.5%
	2012 Estimated Some High School (Grade Level 9 to 11)	3.4%	3.5%	3.3%	3.5%
	2012 Estimated High School Graduate	18.7%	19.9%	21.3%	17.3%
	2012 Estimated Some College	16.1%	17.7%	18.9%	16.7%
	2012 Estimated Associates Degree Only	6.9%	6.6%	6.2%	6.4%
	2012 Estimated Bachelors Degree Only	36.1%	32.0%	29.8%	37.1%
	2012 Estimated Graduate Degree	18.1%	19.2%	19.4%	18.5%
BUSINESS	2012 Estimated Total Businesses	739	1,883	3,449	808
	2012 Estimated Total Employees	7,009	16,382	38,679	7,168
	2012 Estimated Employee Population per Business	9.5	8.7	11.2	8.9
	2012 Estimated Residential Population per Business	18.3	22.7	24.7	17.7

This report was produced using data from private and government sources deemed to be reliable. The information herein is provided without representation or warranty.

SUMMARY PROFILE

2000-2010 Census, 2012 Estimates with 2017 Projections

Calculated using Proportional Block Groups



Prepared by Passov Real Estate Group

Lat/Lon: 41.3933/-81.3376

RS1

SR 422 & SR 306

10.00 (mins)

Bainbridge, OH

Category	Metric	Value
POPULATION	2012 Estimated Population	71,244
	2017 Projected Population	71,140
	2010 Census Population	71,293
	2000 Census Population	66,581
	Projected Annual Growth 2012 to 2017	-
	Historical Annual Growth 2000 to 2012	0.6%
	2012 Median Age	44.4
HOUSEHOLDS	2012 Estimated Households	27,158
	2017 Projected Households	27,695
	2010 Census Households	26,945
	2000 Census Households	24,256
	Projected Annual Growth 2012 to 2017	0.4%
	Historical Annual Growth 2000 to 2012	1.0%
RACE AND ETHNICITY	2012 Estimated White	88.4%
	2012 Estimated Black or African American	5.7%
	2012 Estimated Asian or Pacific Islander	4.0%
	2012 Estimated American Indian or Native Alaskan	0.1%
	2012 Estimated Other Races	1.8%
	2012 Estimated Hispanic	1.3%
INCOME	2012 Estimated Average Household Income	\$133,615
	2012 Estimated Median Household Income	\$92,573
	2012 Estimated Per Capita Income	\$51,247
EDUCATION (AGE 25+)	2012 Estimated Elementary (Grade Level 0 to 8)	1.1%
	2012 Estimated Some High School (Grade Level 9 to 11)	3.3%
	2012 Estimated High School Graduate	21.0%
	2012 Estimated Some College	18.4%
	2012 Estimated Associates Degree Only	6.2%
	2012 Estimated Bachelors Degree Only	30.3%
	2012 Estimated Graduate Degree	19.7%
BUSINESS	2012 Estimated Total Businesses	3,244
	2012 Estimated Total Employees	35,948
	2012 Estimated Employee Population per Business	11.1
	2012 Estimated Residential Population per Business	22.0

This report was produced using data from private and government sources deemed to be reliable. The information herein is provided without representation or warranty.