

**400 Moog Industrial Blvd
Smithville, TN**

**FOR SUBLEASE
SUITE C - \$4.35/NNN**



6525 Quail Hollow Rd., Ste. 401
Memphis, TN 38120
O 901.758.5670
www.crye-leike.com



JAIME HENSON, CCIM
Commercial Broker
C 901.691.1849
jaime.henson@crye-leike.com

FOR SUBLEASE
\$3.35/NNN
\$0.61 OPEX

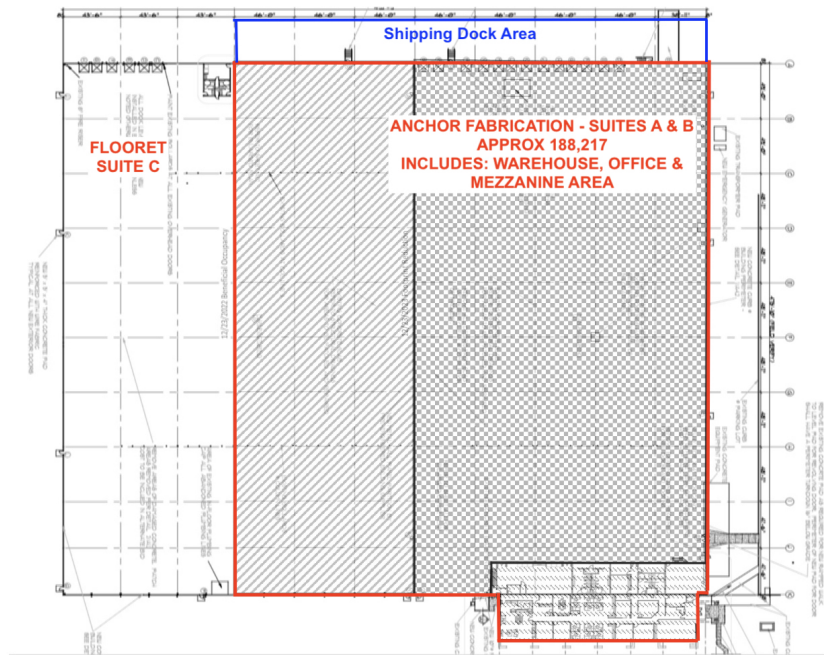
Property Highlights

- Class B Distribution Warehouse
- Security System
- 6 High Dock Doors (10'x12') with Levelers & 1 Drive In
- 6" Concrete Floors
- Ceiling Height: 28' - 36'
- Column Spacing: 48'x50'
- Great Visibility on Hwy 70
- Heavy Power: 480 volt, 3-Phase, (1) 3,000 amp & (1) 1,000 amp Switchgear
- Wet Sprinkler System
- Plenty of Parking
- Metal Halide Lighting
- Zoned I-1 - Industrial District
- Built in 2007
- 2 Years Left on Lease

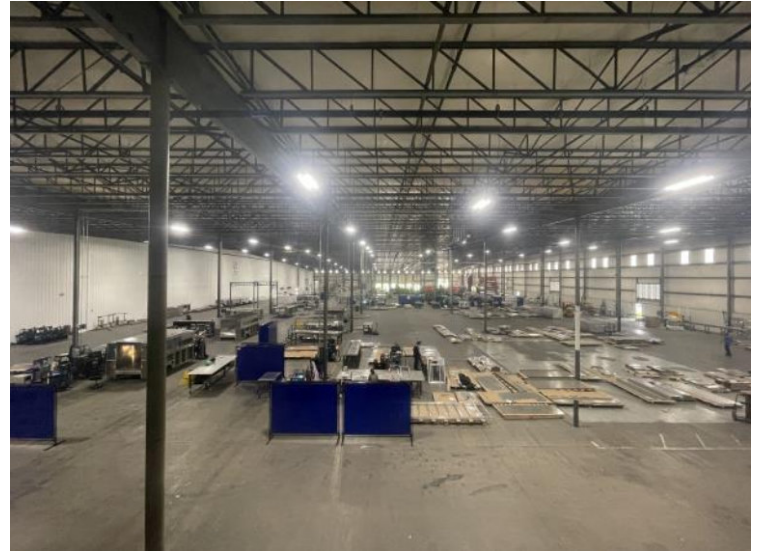
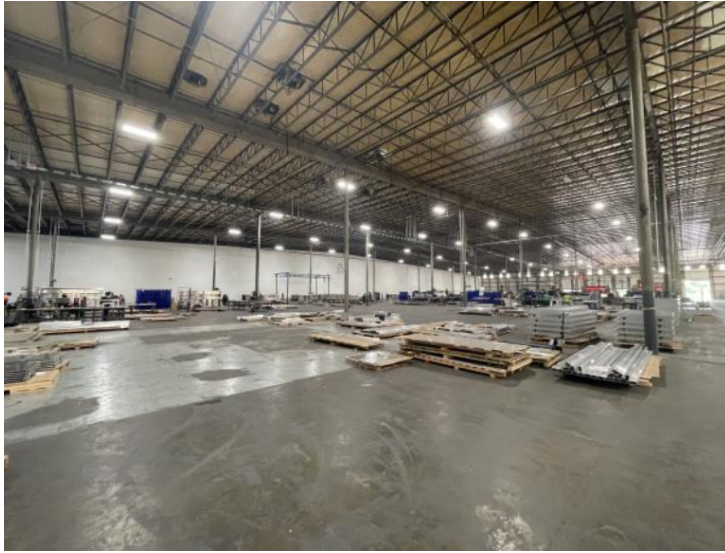


The information contained herein has been obtained from sources deemed reliable but has not been verified and no guarantee, warranty, or representation, either express or implied, is made with respect to such information. Terms of sale and availability are subject to change or withdrawal without notice.

400 Moog Industrial Blvd – Warehouse Floor Plan



400 Moog Industrial Blvd – Warehouse Pictures



Google Map

400 Moog Industrial Blvd Property Map



Smithville, TN is located in DeKalb County, TN; about an hour from Nashville International Airport; 30 Minutes from I-40 (Cookeville, TN) and an Hour from I-24

JAIME HENSON, CCIM
Commercial Broker
C 901.691.1849
jaime.henson@crye-leike.com