

AVAILABLE - FOR LEASE 310 KING STREET, SUITE B

CHARLESTON, SC 29401

RETAIL



LOCATION

Nearby Retailers

POTTERY BARN

vineyard vines

WILLIAMS-SONOMA

J.CREW



OFFERED BY

**belk
lucy**

(843) 856-4600
www.belklucy.com

Kevin Shields

kevin.shields@belklucy.com

(843) 936-1715 — direct office

(843) 593-7119 — mobile

AND

Blair Belk, CCIM

blair.belk@belklucy.com

(843) 606-5449 — direct office

(843) 709-9292 — mobile

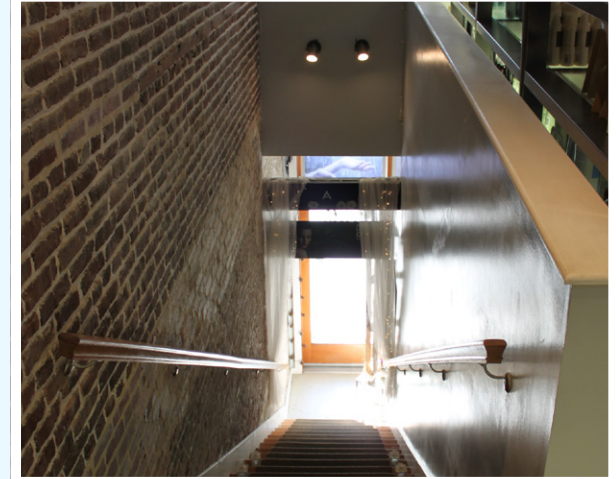
PROPERTY INFORMATION

PROPERTY DESCRIPTION

Belk | Lucy is pleased to present the exclusive listing for 310 King Street, Suite B. This 2,468 square foot space is located on the second floor of 310 King Street, above Kids on King. The renovated space is equipped with exposed brick walls and beautiful hardwood floors throughout. This is an excellent opportunity to have an address and signage on King Street. It is currently being used as a salon and spa, but would be the perfect location for many uses. Area retailers include Pottery Barn, Apple, Williams Sonoma, J Crew, Anthropologie, Kate Spade, and Louis Vuitton, just to name a few.

AREA DESCRIPTION

Historic King Street, located in downtown Charleston, SC is the premier retail and restaurant location in peninsular Charleston. Located in the heart of historic Charleston, King Street is home to diverse, assorted restaurants and shops, and the area receives business from tourists, students, and residents year round.



TERMS AND CONDITIONS

Suite B	2,468 sf	\$25.00/sf NNN
CAM, Taxes, and Ins. (est.)		\$5.18/sf

DEMOGRAPHICS (5-MILE)

Daytime Population	153,334
Households	56,973
Avg. HH Income	\$89,806

OFFERED BY



(843) 856-4600
www.belklucy.com

Kevin Shields
kevin.shields@belklucy.com
(843) 936-1715 — direct office
(843) 593-7119 — mobile

AND

Blair Belk, CCIM
blair.belk@belklucy.com
(843) 606-5449 — direct office
(843) 709-9292 — mobile