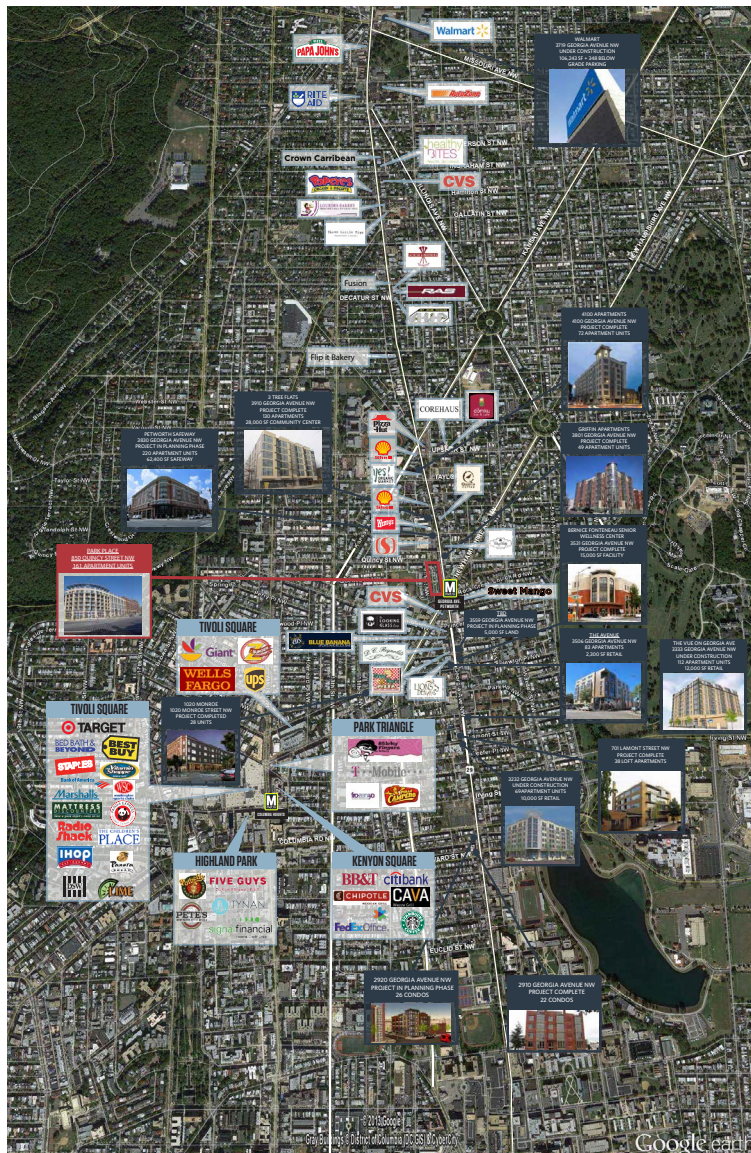


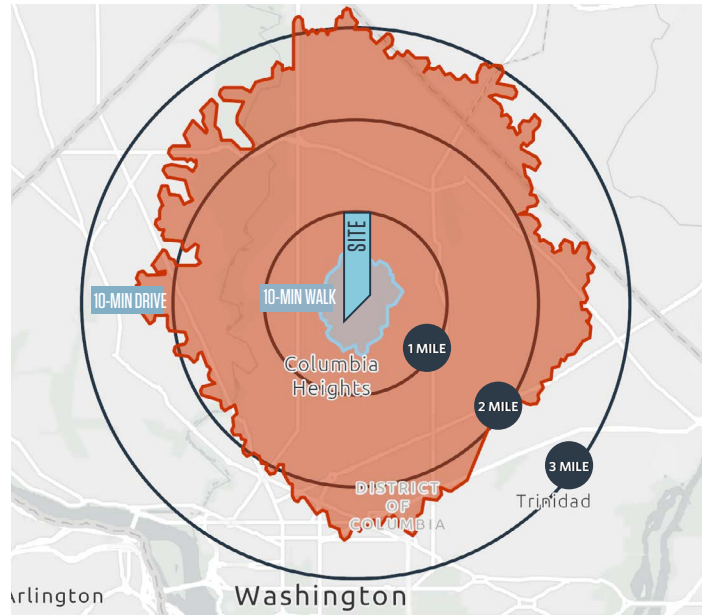
RARE GARAGE PARKING OPPORTUNITY IN NW DC ABOVE PETWORTH METRO

850 QUINCY ST. NW
UP TO 115 PARKING SPACES AVAILABLE

AERIAL



LOCATION



DEMOGRAPHICS 2021

	1-MILE	2-MILE	3-MILE	10-MIN WALK	10-MIN DRIVE
Population	68,439	222,862	410,572	16,982	281,208
Daytime Population	32,127	92,773	436,204	2,698	129,520
Households	27,093	101,180	188,753	6,043	126,112
Average HH Income	\$115,057	\$134,957	\$139,627	\$119,160	\$144,345

TRAFFIC COUNT/METRO RIDERSHIP | 2021:

Georgia Ave	24,400 ADT
Georgia Avenue Petworth Metro	5,817 PPD

FOR MORE INFORMATION PLEASE CONTACT:

MATT SKALET | 202.420.7775 | mskalet@klnb.com

KIM STEIN | 202.652.2338 | kstein@klnb.com

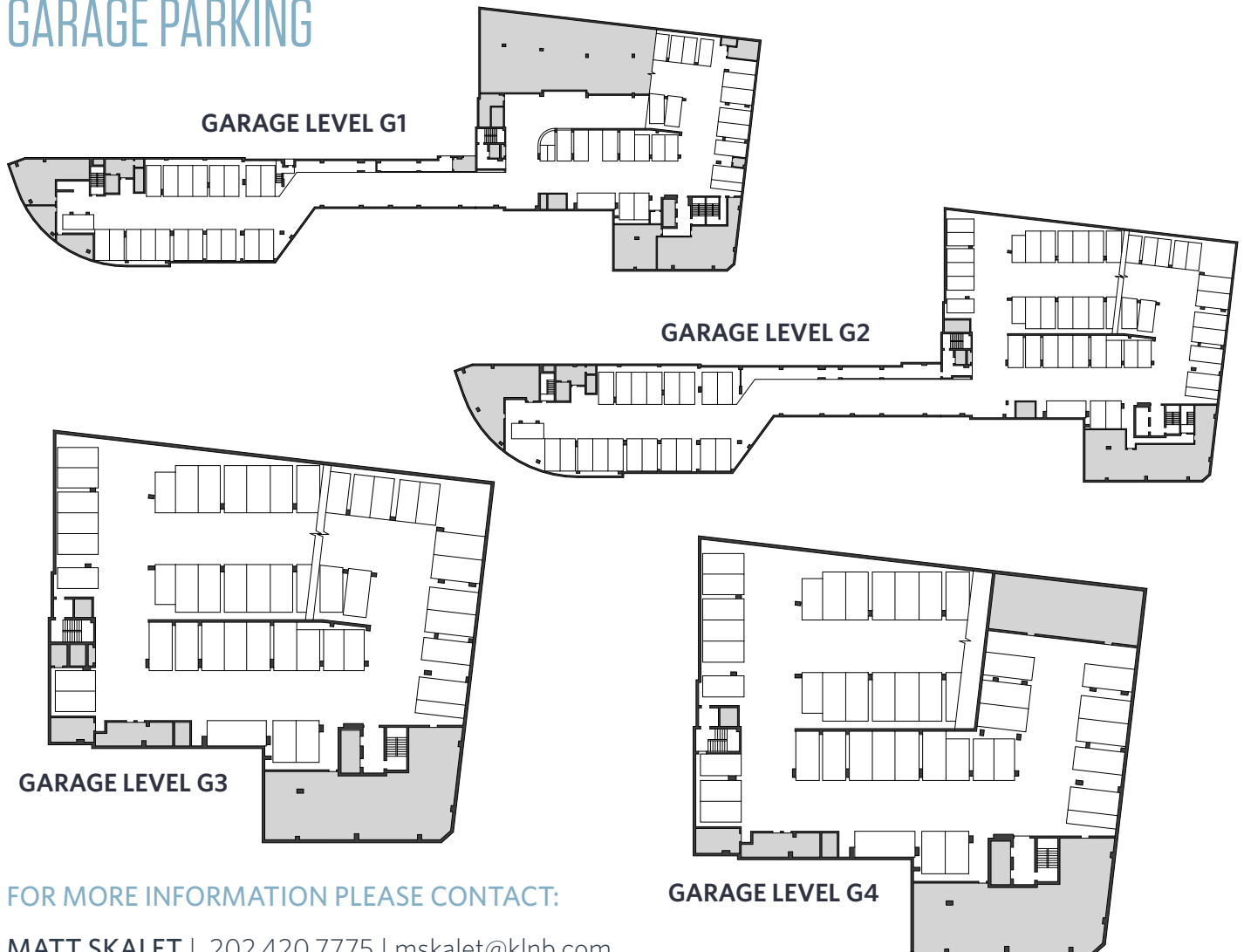
LINDSEY DAVIDSON | 202.420.7769 | l davidson@klnb.com



SITE PLAN



GARAGE PARKING



FOR MORE INFORMATION PLEASE CONTACT:

MATT SKALET | 202.420.7775 | mskalet@klnb.com

KIM STEIN | 202.652.2338 | kstein@klnb.com

LINDSEY DAVIDSON | 202.420.7769 | ldavidson@klnb.com