



# For Sublease

2700 Quarry Lake Dr  
Baltimore, MD 21209

---

2,719 RSF Medical Office Space Available Immediately





# Property **Highlights**

## **Class A Medical Office space located in the mixed-use community of Quarry Lake at Greenspring**

- Rental rate at \$39.35 psf full service, net of utilities and cleaning
- Terms:
  - Sublease term through September 30, 2030
- High parking ratio, including 200 covered and 288 surface spaces
- Conveniently located off of Interstate 695 at a full interchange
- Premier location to shopping, dining, and conveniences at The Shops at Quarry Lake

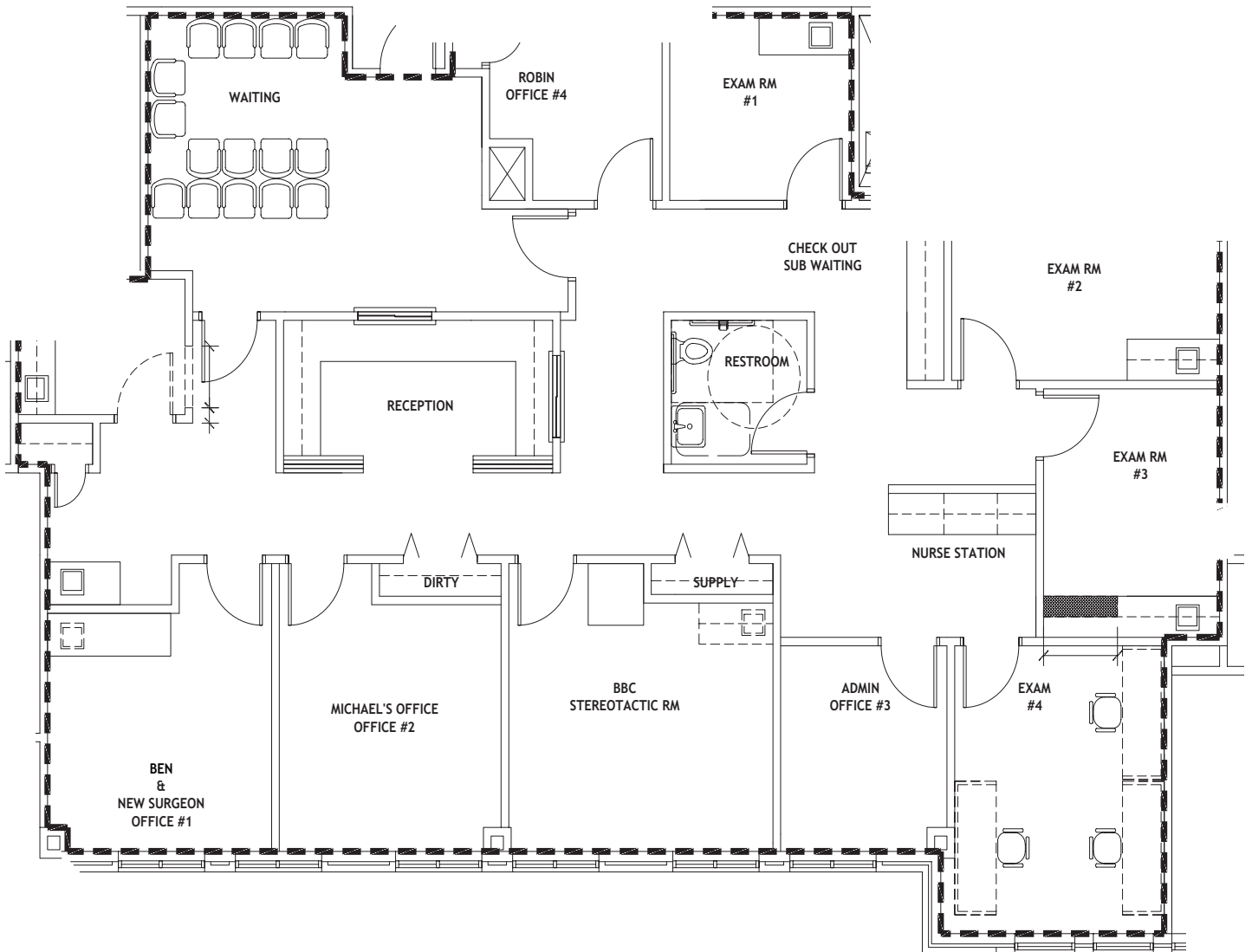


# Floor plan

2<sup>nd</sup> Floor

Suite 220

2,719 RSF





# 2700 Quarry Lake Dr - Baltimore, MD 21209



**For leasing information, please contact:**

**Rob Freedman**

+1 410 952 9444

rob.freedman@jll.com

**Dominic Digiovannantonio**

+1 301 752 6799

dom.digi@jll.com

**Gary Applestein**

+1 410 404 3196

gary.applestein@jll.com

[jll.com/baltimore](http://jll.com/baltimore)

