

66 LP - SODO Commerce Center

66 S Hanford St, Seattle, WA 98134



AMERICAN LIFE

Darrell Sanders

American Life, Inc.

2450 S 6th Ave, Suite 200, Seattle, WA 98134

darrells@americanlifeinc.com

(206) 381-1690 Ext: 126

66 LP - SODO Commerce Center

Upon Request

Beautiful art deco building in Seattle's Sodo neighborhood. Plenty of parking with great visibility from Hwy 99 and 1st Ave South. Soaring ceiling heights and restored hardwoods make this a great location for a showroom, distribution, or other clean commercial / light industrial use. A PERFECT opportunity for an engineering or other similar firm to relocate, save rent and be close to freeways, light rail, everything! Lots of parking on site....

- Close in access with plentiful onsite parking
- Private truck height loading dock
- Fully conditioned building - office and storage
- Plug and play with wired workstations included

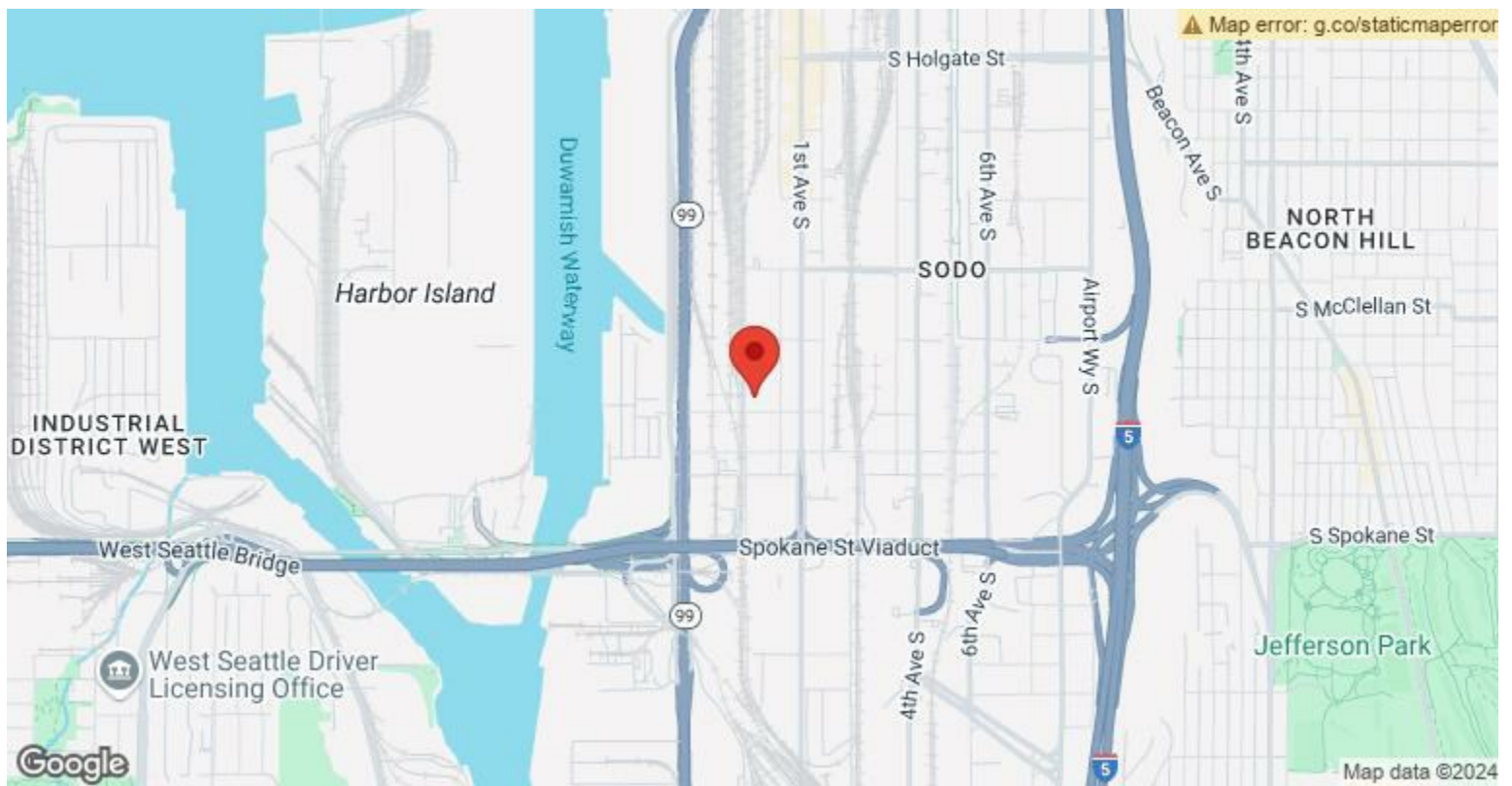


Rental Rate:	Upon Request
Property Type:	Flex
Property Subtype:	Industrial/Storage/Office
Building Class:	C
Rentable Building Area:	36,200 SF
Year Built:	1937
Rental Rate Mo:	Upon Request

1st Floor

Space Available	7,434 SF
Rental Rate	Upon Request
Date Available	Now
Service Type	Triple Net (NNN)
Space Type	Relet
Space Use	Flex
Lease Term	Negotiable

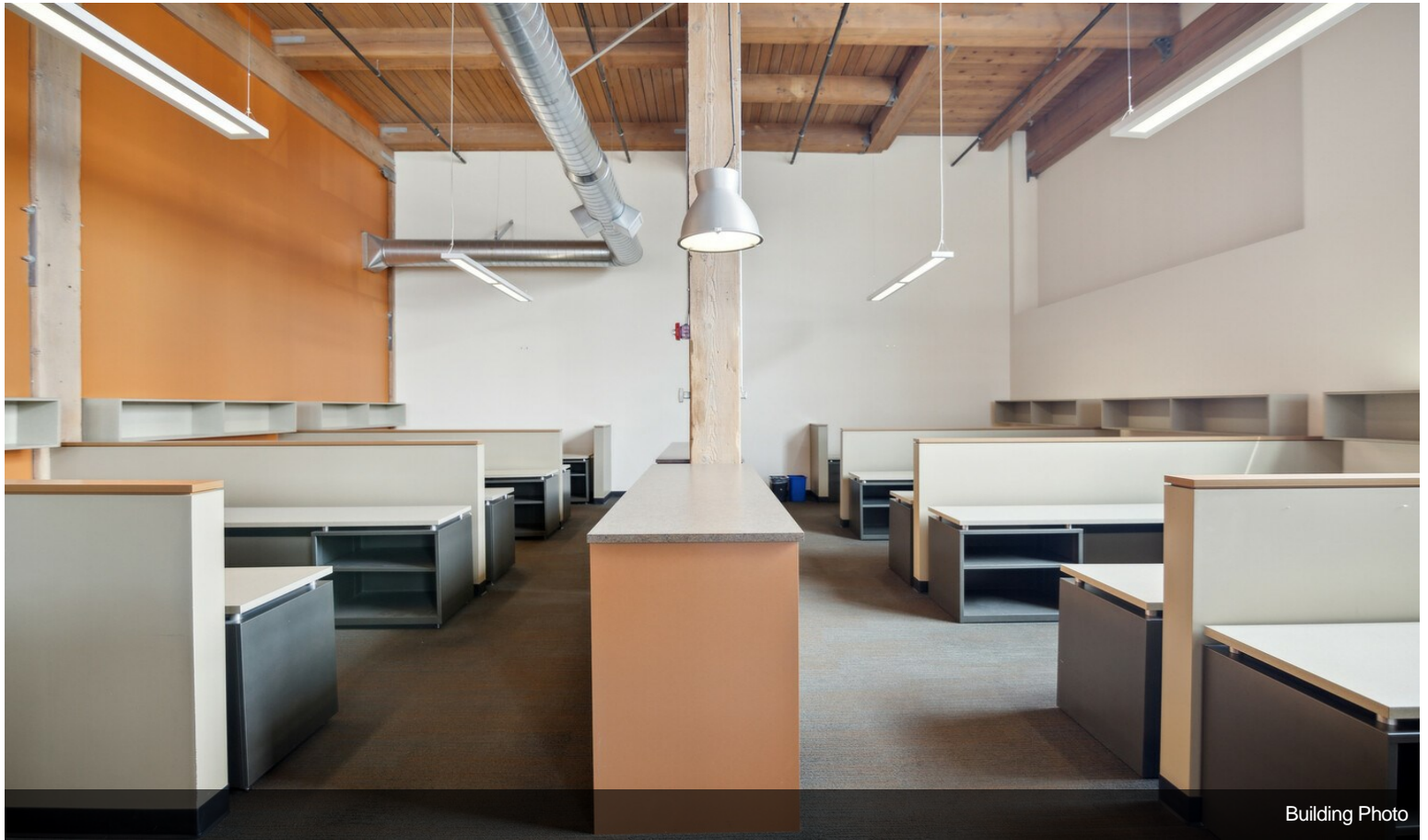
Beautiful art deco building in Seattle's Sodo neighborhood. Plenty of parking with great visibility from Hwy 99 and 1st Ave South. Soaring ceiling heights and restored hardwoods make this a great location for a showroom, distribution, or other clean commercial / light industrial use. A PERFECT opportunity for an engineering or other similar firm to relocate, save rent and be close to freeways, light rail, everything! Lots of parking on site.



66 S Hanford St, Seattle, WA 98134

Beautiful art deco building in Seattle's Sodo neighborhood. Plenty of parking with great visibility from Hwy 99 and 1st Ave South. Soaring ceiling heights and restored hardwoods make this a great location for a showroom, distribution, or other clean commercial / light industrial use. A PERFECT opportunity for an engineering or other similar firm to relocate, save rent and be close to freeways, light rail, everything! Lots of parking on site.

Property Photos

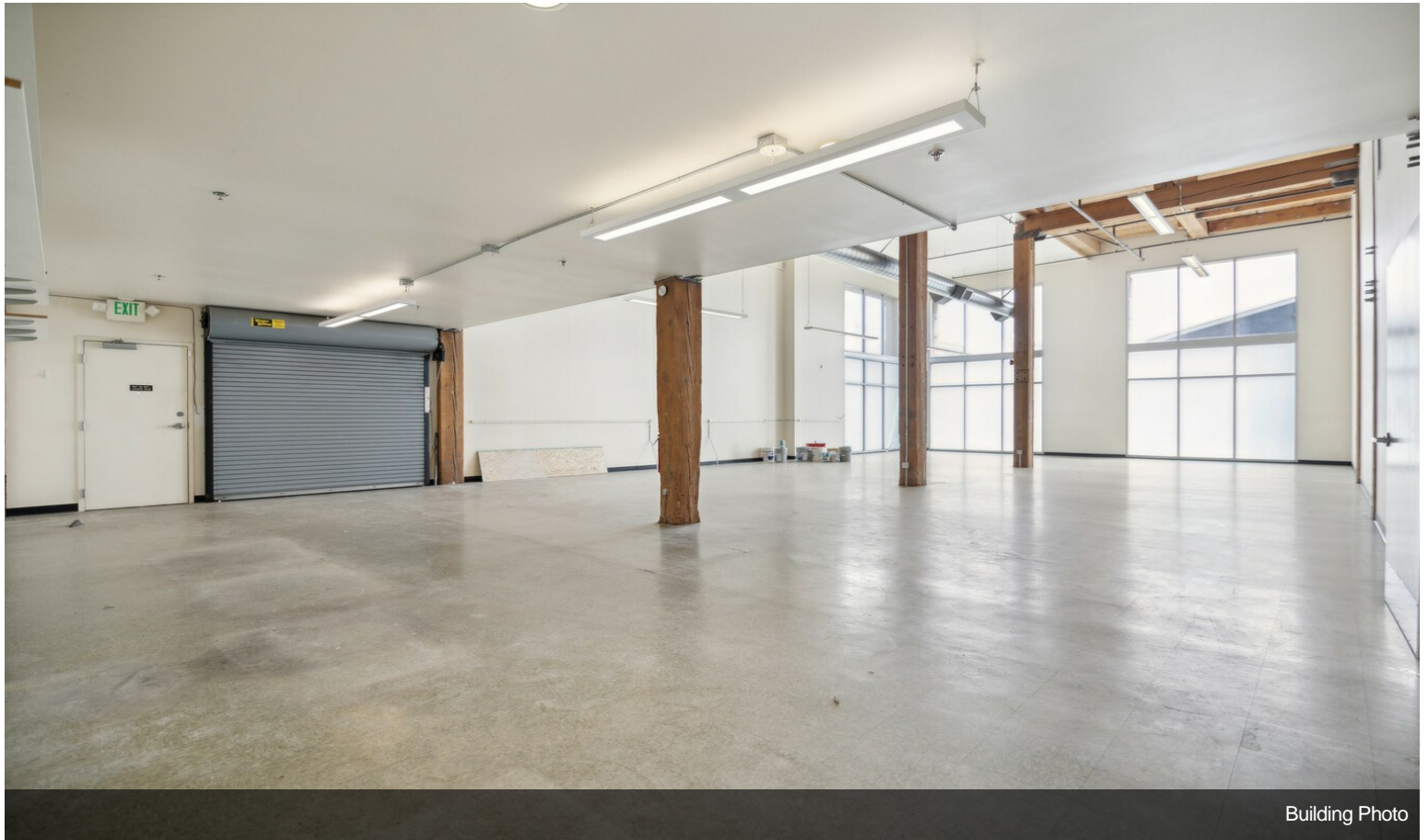


Building Photo

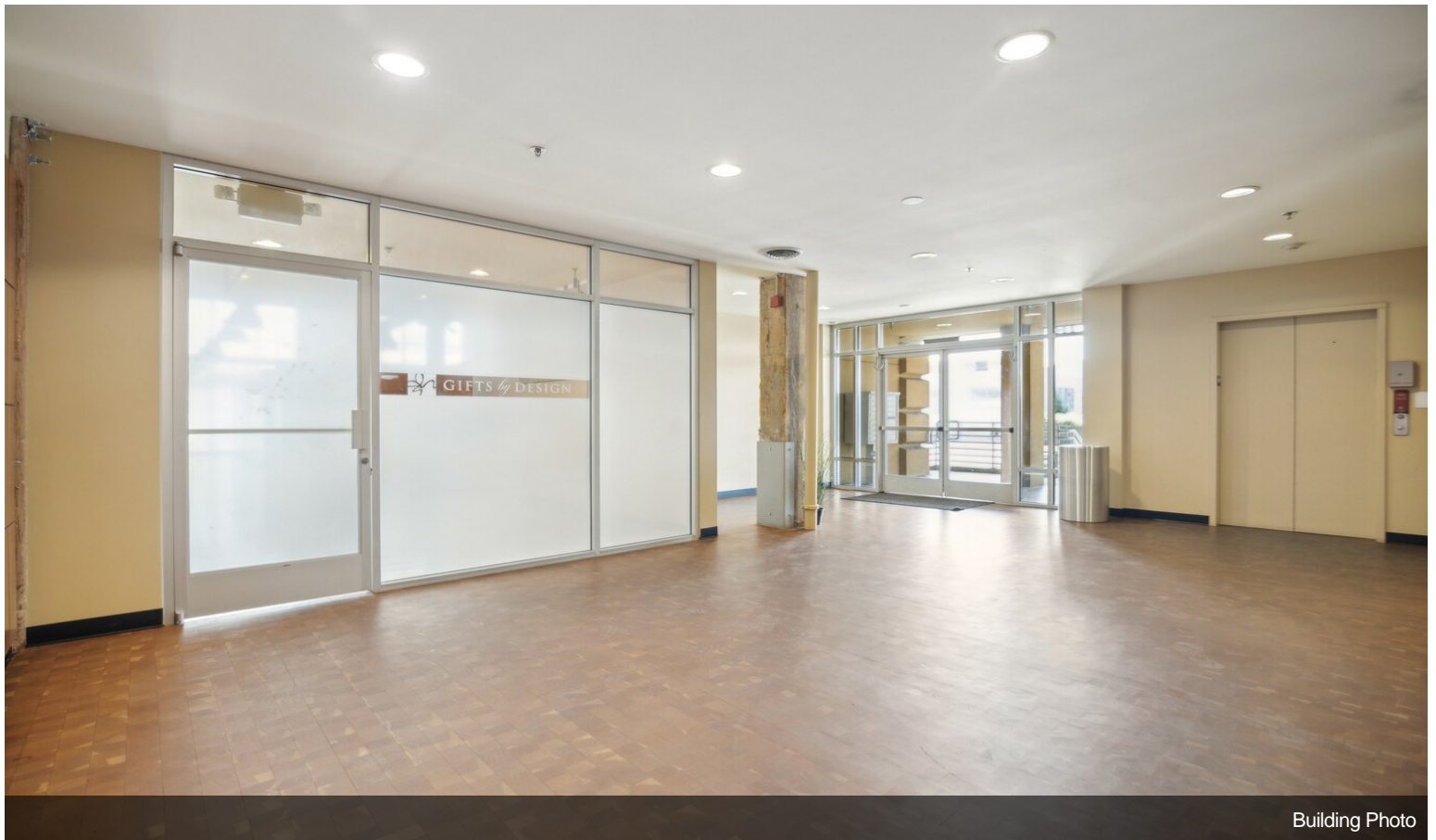


Building Photo

Property Photos



Building Photo



Building Photo

Property Photos

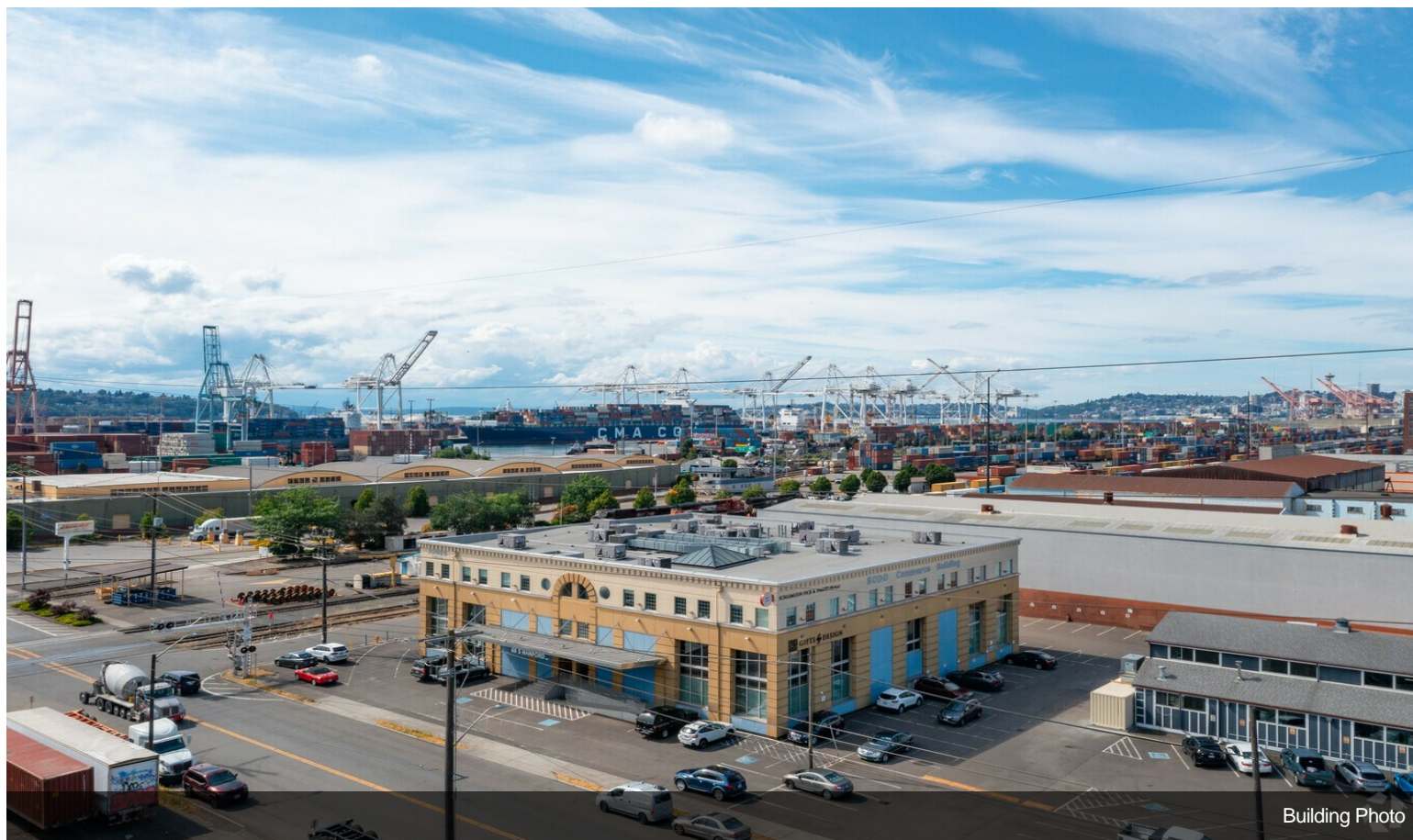


Building Photo



Building Photo

Property Photos

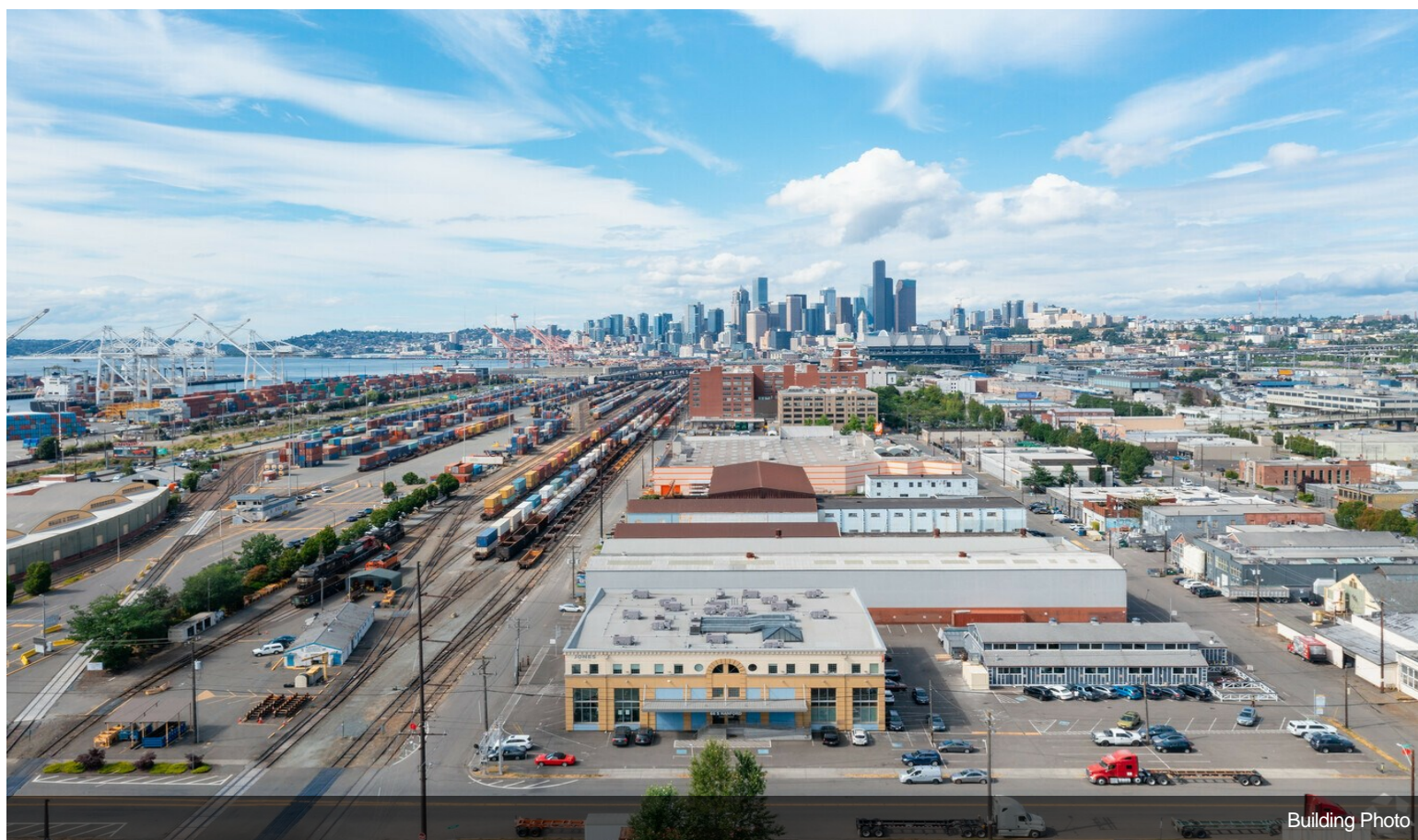


Building Photo



Building Photo

Property Photos



Property Photos



Building Photo